

high temperature dust filters

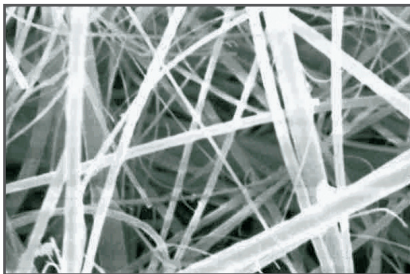
FEATURES

- high quality die cast aluminum filter rated to 450°F for high temperature particulate removal in high temperature compressed air
- 11 models with flow rates from 15 to 1600 scfm
- provided with a 1 micron dry particulate element
- manufactured from machined and die cast aluminum and polyester powder coated for optimum corrosion protection
- innovative push-fit element design with dual o-ring seal to ensure optimum sealing and mechanical strength
- designed for the unique demands of high temperature applications including downstream of an externally heated or blower purge desiccant air dryer
- custom engineered filter media is designed to handle the heat while providing high efficiency filtration with minimal pressure drop
- manufactured in an ISO 9001 approved facility and tested in accordance with ISO 12500
- CRN approved
- applications include chemical, food and beverage, manufacturing, military and oil and gas



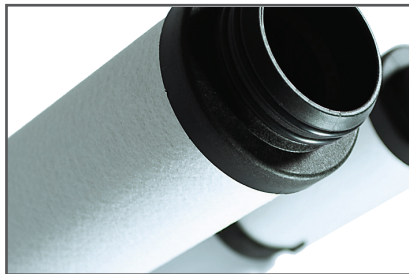
proprietary media technology

hydrophobic and oleophobic borosilicate glass microfiber media repels oil and water for lower differential pressure



element design

robust design includes aluminum end caps, stainless steel cylinder and silicone o-rings



nano-purification solutions
Charlotte, North Carolina
United States

nano-purification solutions TN
Maryville, Tennessee
United States

nano-purification solutions Canada
St. Catharines, Ontario
Canada

nano-purification solutions Ltd.
Gateshead, Tyne and Wear
United Kingdom

nano-purification solutions GmbH
Erkelenz, Germany

nano-purification solutions Asia
Singapore

Tel: 704.897.2182
Fax: 704.897.2183
Email: support@n-psi.com
Web: www.n-psi.com

SPECIFICATIONS

filter model	inlet & outlet		rated flow ⁽¹⁾		dimensions (inches)				approx. weight	replacement element
	NPT	scfm	Nm ³ /h	A	B	C	D	lbs		
NHT 0015 M1	¼"	15	26	2.48	0.55	5.71	1.97	1.3	EHT 0015 M1	
NHT 0030 M1	⅜"	30	51	2.48	0.55	6.89	1.97	1.5	EHT 0030 M1	
NHT 0065 M1	½"	65	111	4.33	1.50	10.75	5.91	6.8	EHT 0065 M1	
NHT 0075 M1	¾"	75	128	4.33	1.50	10.75	5.91	6.9	EHT 0075 M1	
NHT 0150 M1	1"	150	255	4.33	1.50	14.09	5.91	8.3	EHT 0150 M1	
NHT 0300 M1	1½"	300	510	5.75	2.01	19.29	6.69	17.9	EHT 0300 M1	
NHT 0450 M1	2"	450	765	5.75	2.01	19.29	6.69	17.4	EHT 0450 M1	
NHT 0650 M1	2"	650	1105	5.75	2.01	27.05	6.69	23.2	EHT 0650 M1	
NHT 1000 M1	3"	1000	1700	9.06	2.68	28.43	7.01	41.1	EHT 1000 M1	
NHT 1250 M1	3"	1250	2125	9.06	2.68	33.23	7.01	44.5	EHT 1250 M1	
NHT 1600 M1	3"	1600	2720	9.06	2.68	39.06	7.01	49.0	EHT 1600 M1	

specifications

design operating pressure range	0 to 150 psig
condensate drain (included)	manual ball valve
filter housing material	machined & die cast aluminum

element performance

	M1
particle removal	1 micron
design operating temperature range	35 to 450°F
pressure drop - clean	1.1 psid
pressure drop - recommended replacement ⁽²⁾	5.0 psid
flow direction through element	outside to inside
maximum element life	12 months or 8000 hours

pressure correction factors

operating pressure (psig)	60	70	85	100	115	145
correction factor	0.76	0.84	0.92	1.00	1.07	1.19

- (1) at 100 psig. For all other pressures, refer to the pressure correction factor table above
- (2) differential pressure indicator not included
- (3) filters are intended for dry particulate filtration only
- (4) technical specifications subject to change without notice. Direct inquiries to support@n-psi.com or contact 704.897.2182

