

REV A	Modification EMISSIONE
29/03/2017	Drafter MU Approved AC

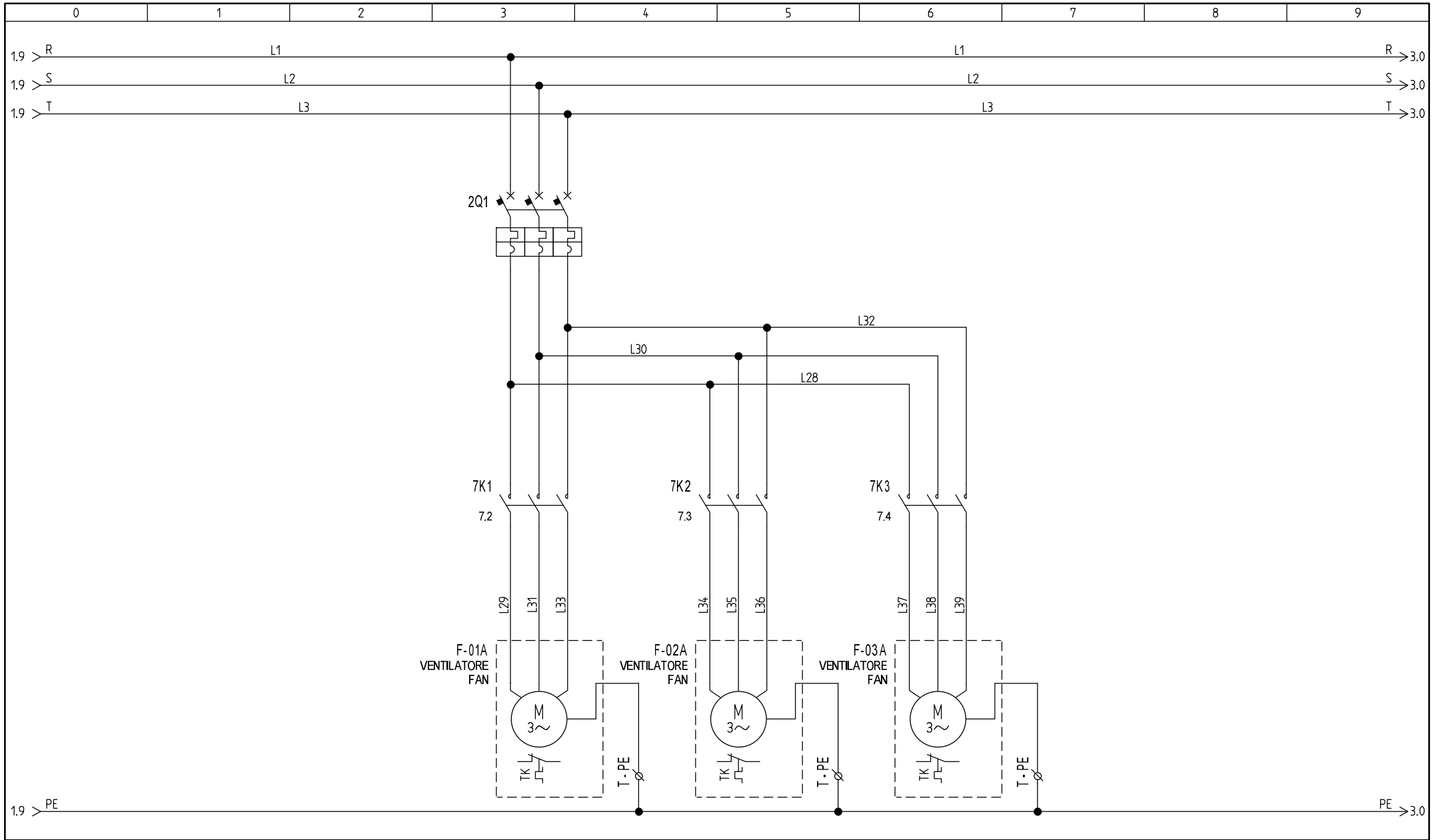
Model: NCS 1202 - 1402 - 1502 US

Drawing no.: 85504260/013/A

This drawing is a property of nano-purification solutions and we reserve the copyright all our designs which cannot be reproduced, transmitted, disclosed to third parties or utilized in any form without first obtaining our written consent. Contravention will be prosecuted.
This drawing is subject to modification time to time to suit construction purpose.

File name: 85504260-013-A

DRAFT.: DATE: 29/03/2017

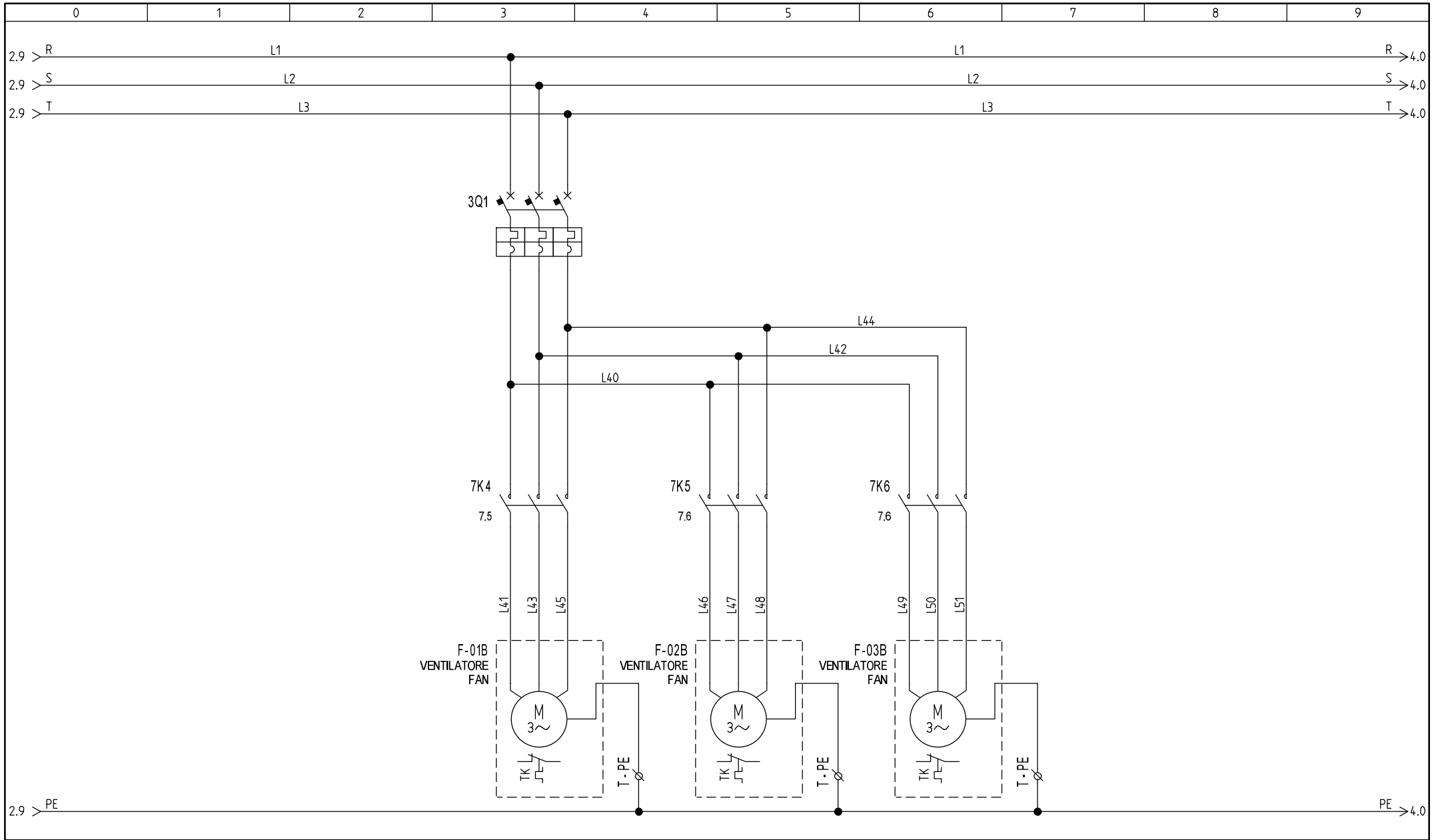


REV A	Modification EMISSIONE
29/03/2017	Drafter MU Approved AC

Model: NCS 1202 - 1402 - 1502 US
 Drawing no.: 85504260/013/A

This drawing is a property of nano-purification solutions and we reserve the copyright all our designs which cannot be reproduced, transmitted, disclosed to third parties or utilized in any form without first obtaining our written consent. Contravention will be prosecuted. This drawing is subject to modification time to time to suit construction purpose.

File name: 85504260-013-A
 DRAFT.: DATE: 29/03/2017

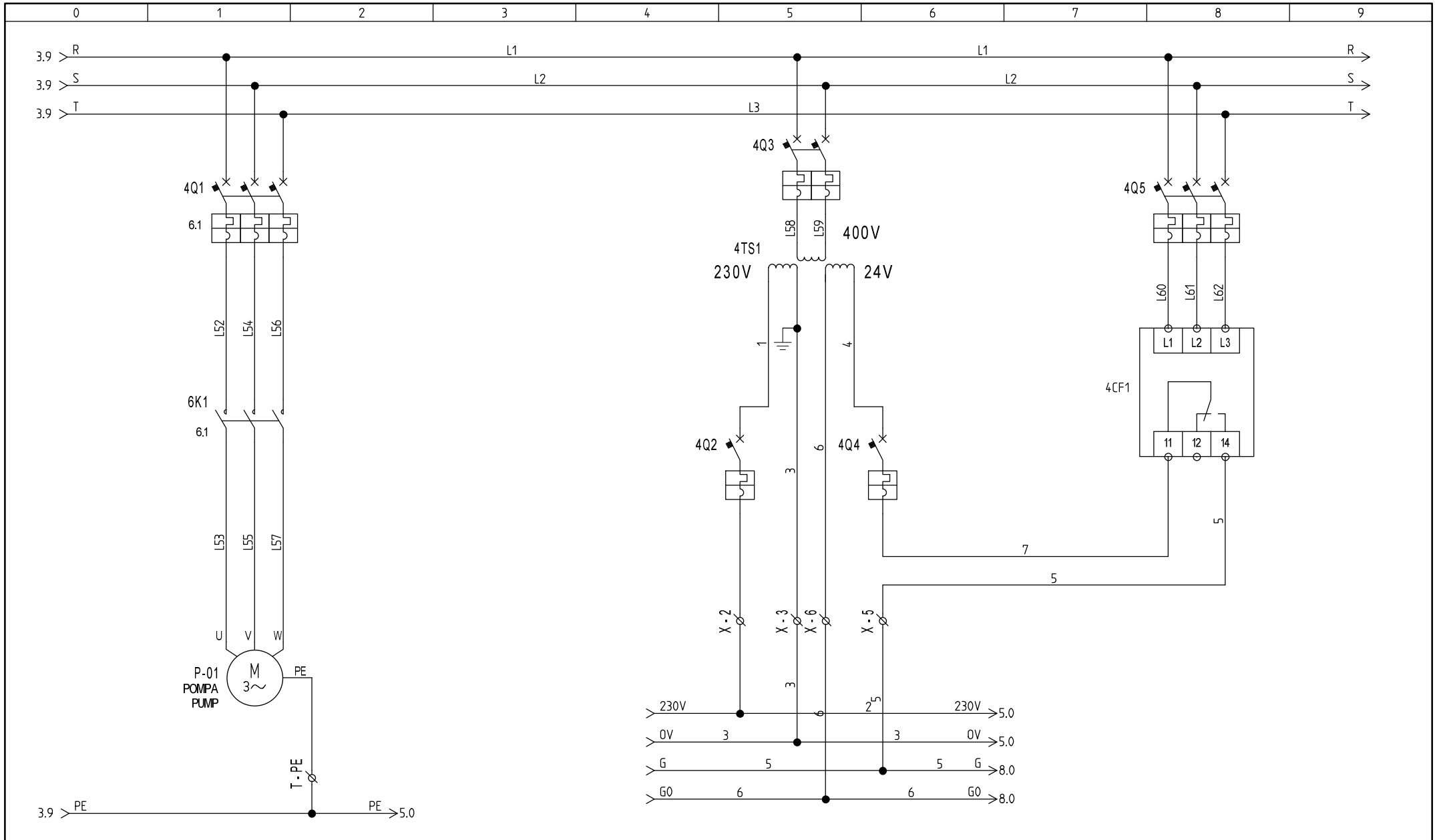


REV A	Modification EMISSIONE
29/03/2017	Drafter MU Approved AC

Model: NCS 1202 - 1402 - 1502 US
 Drawing no.: 85504260/013/A

This drawing is a property of nano-purification solutions and we reserve the copyright all our designs which cannot be reproduced, transmitted, disclosed to third parties or utilized in any form without first obtaining our written consent. Contravention will be prosecuted. This drawing is subject to modification time to time to suit construction purpose.

File name: 85504260-013-A
 DRAFT.: DATE: 29/03/2017



REV A	Modification EMISSIONE
29/03/2017	Drafter MU Approved AC

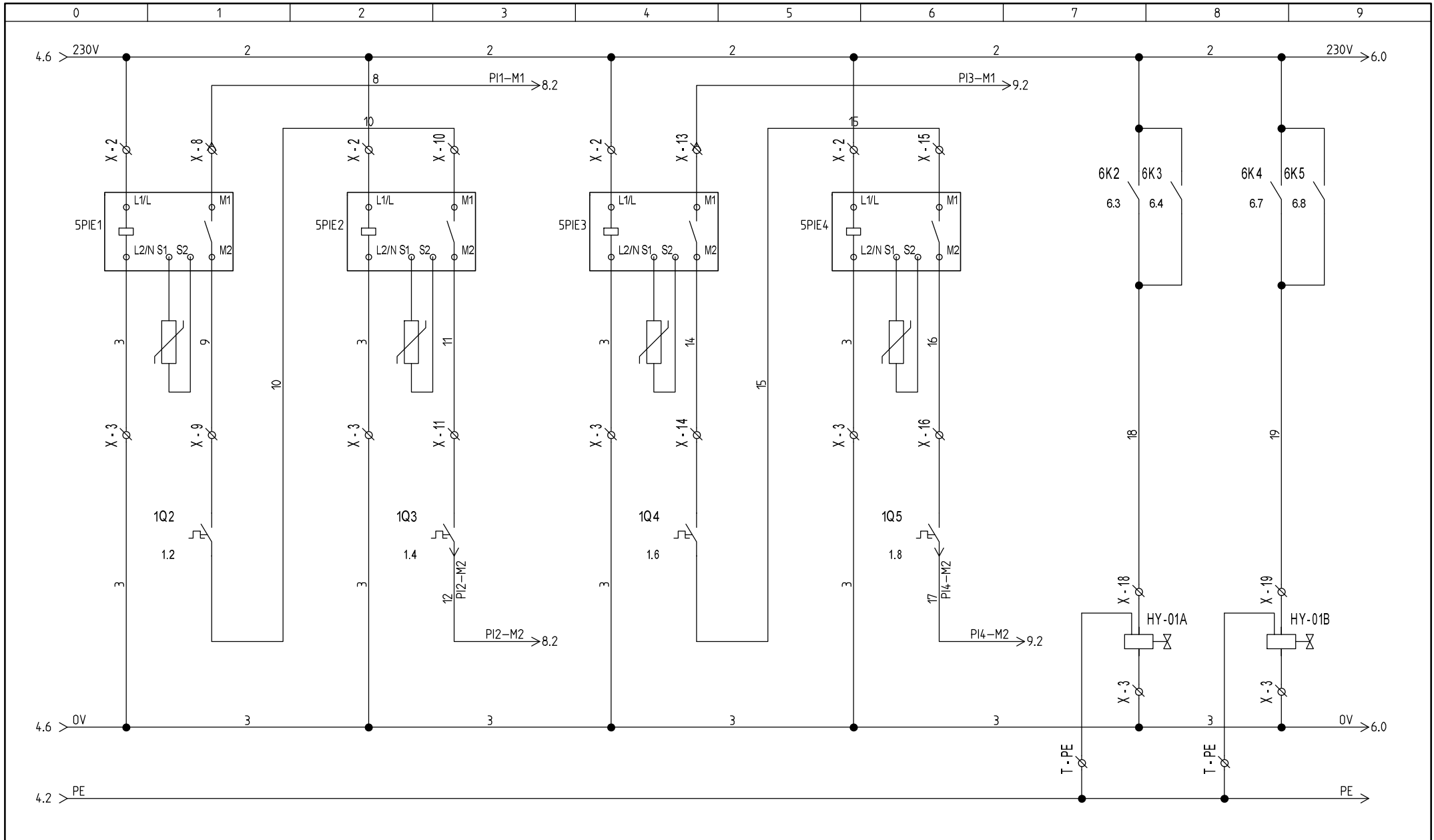
Model: NCS 1202 - 1402 - 1502 US

Drawing no.: 85504260/013/A

This drawing is a property of nano-purification solutions and we reserve the copyright all our designs which cannot be reproduced, transmitted, disclosed to third parties or utilized in any form without first obtaining our written consent. Contravention will be prosecuted.
This drawing is subject to modification time to time to suit construction purpose.

File name: 85504260-013-A

DRAFT.: DATE: 29/03/2017



REV A	Modification EMISSIONE
29/03/2017	Drafter MU Approved AC

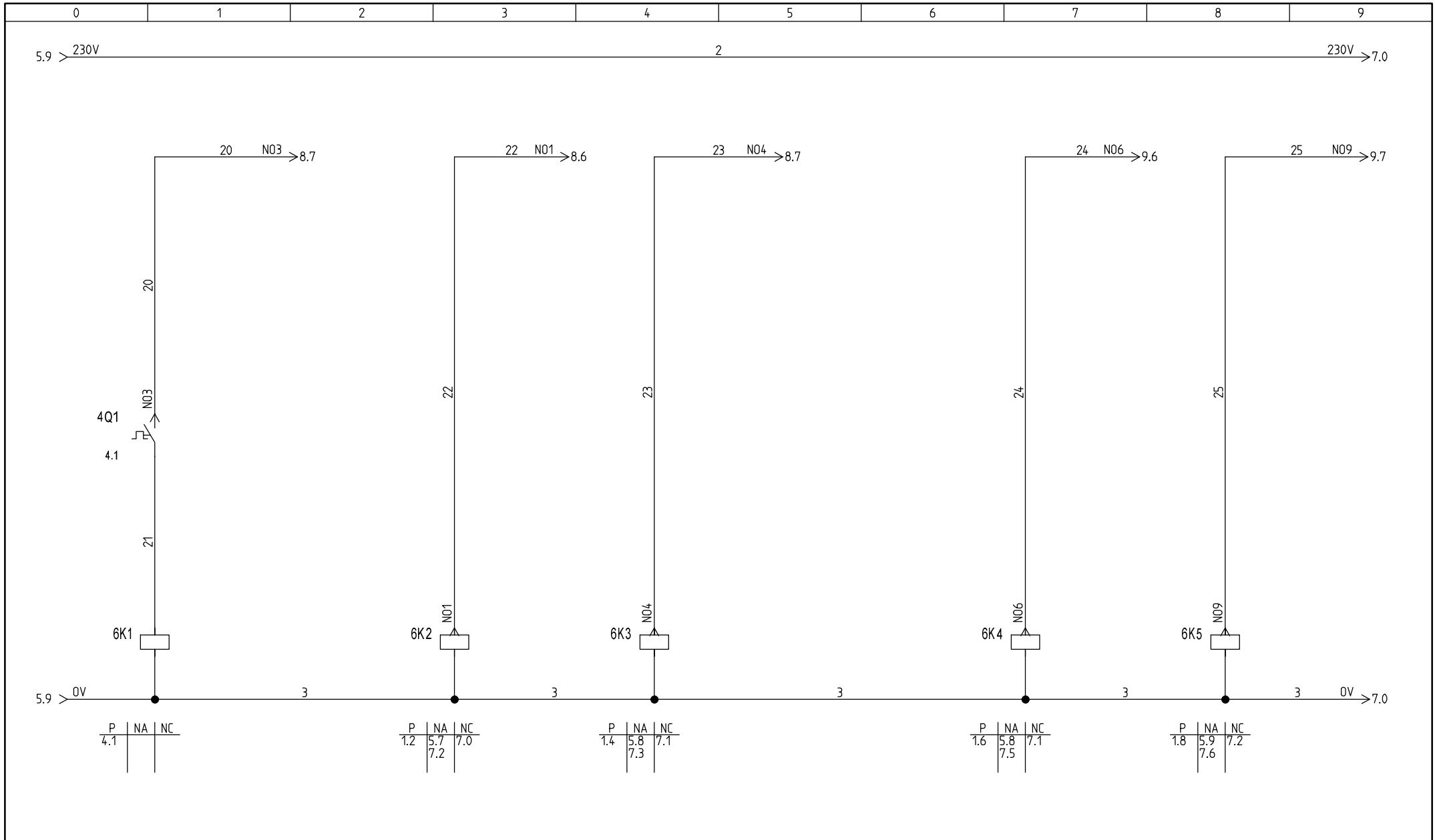
Model: NCS 1202 - 1402 - 1502 US

Drawing no.: 85504260/013/A

This drawing is a property of nano-purification solutions and we reserve the copyright all our designs which cannot be reproduced, transmitted, disclosed to third parties or utilized in any form without first obtaining our written consent. Contravention will be prosecuted. This drawing is subject to modification time to time to suit construction purpose.

File name: 85504260-013-A

DRAFT.: DATE: 29/03/2017

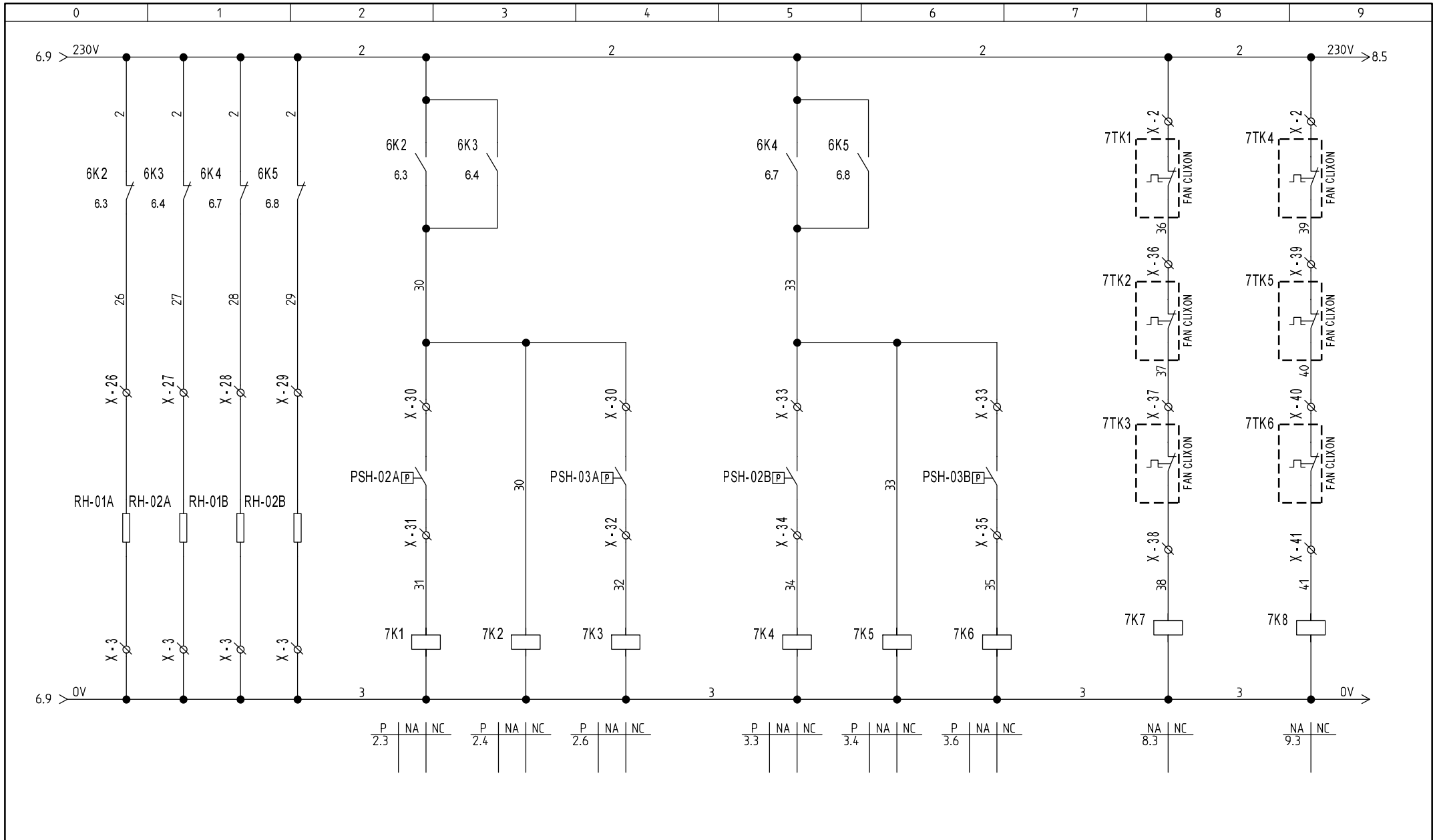


REV A	Modification EMISSIONE
29/03/2017	Drafter MU Approved AC

Model: NCS 1202 - 1402 - 1502 US
 Drawing no.: 85504260/013/A

This drawing is a property of nano-purification solutions and we reserve the copyright all our designs which cannot be reproduced, transmitted, disclosed to third parties or utilized in any form without first obtaining our written consent. Contravention will be prosecuted.
 This drawing is subject to modification time to time to suit construction purpose.

File name: 85504260-013-A
 DRAFT.: DATE: 29/03/2017

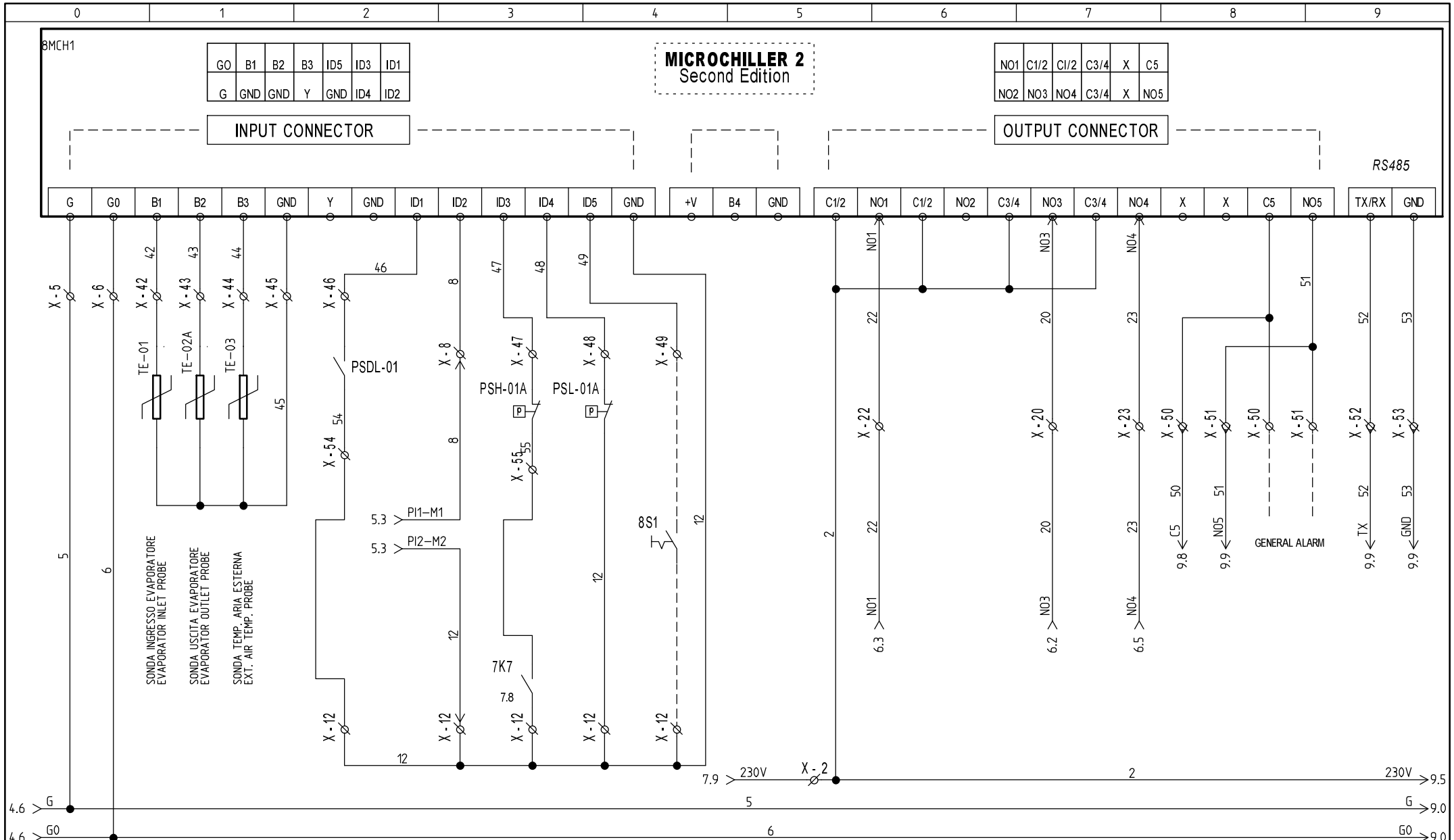


REV A	Modification EMISSIONE
29/03/2017	Drafter MU Approved AC

Model: NCS 1202 - 1402 - 1502 US
 Drawing no.: 85504260/013/A

This drawing is a property of nano-purification solutions and we reserve the copyright all our designs which cannot be reproduced, transmitted, disclosed to third parties or utilized in any form without first obtaining our written consent. Contravention will be prosecuted. This drawing is subject to modification time to time to suit construction purpose.

File name: 85504260-013-A
 DRAFT.: DATE: 29/03/2017



REV A	Modification EMISSIONE
29/03/2017	Drafter MU Approved AC

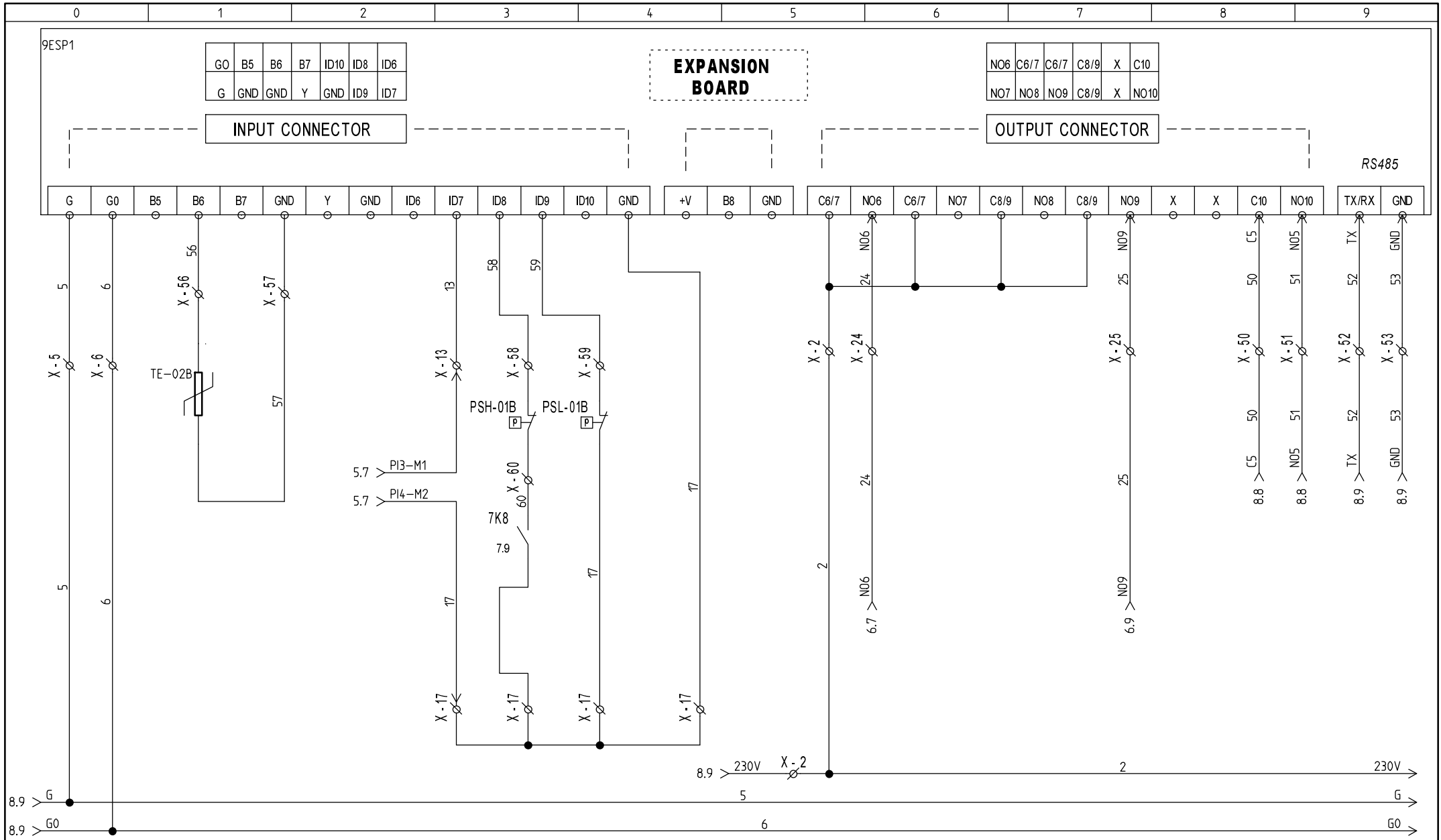
Model: NCS 1202 - 1402 - 1502 US

Drawing no.: 85504260/013/A

This drawing is a property of nano-purification solutions and we reserve the copyright all our designs which cannot be reproduced, transmitted, disclosed to third parties or utilized in any form without first obtaining our written consent. Contravention will be prosecuted. This drawing is subject to modification time to time to suit construction purpose.

File name: 85504260-013-A

DRAFT.: DATE: 29/03/2017



REV A	Modification EMISSIONE
29/03/2017	Drafter MU Approved AC

Model: NCS 1202 - 1402 - 1502 US

Drawing no.: 85504260/013/A

This drawing is a property of nano-purification solutions and we reserve the copyright all our designs which cannot be reproduced, transmitted, disclosed to third parties or utilized in any form without first obtaining our written consent. Contravention will be prosecuted. This drawing is subject to modification time to time to suit construction purpose.

File name: 85504260-013-A

DRAFT.: DATE: 29/03/2017

Components list

Item (-)	Description	Sheet	Column
1Q4	MAGNETOTERMICO COMPRESS. / COMPRESSOR MAIN SWITCH	5	4
SPIE4	PROTEZIONE COMPRESSORE / COMP. MOTOR PROTECTION	5	5
1Q5	MAGNETOTERMICO COMPRESS. / COMPRESSOR MAIN SWITCH	5	6
HY-01A	VALVOLA SOLENOIDE / SOLENOID VALVE	5	7
HY-01B	VALVOLA SOLENOIDE / SOLENOID VALVE	5	8
6K1	RELE' AUSILIARIO / AUXILIARY RELAY	6	1
4Q1	MAGNETOTERMICO COMPRESS. / COMPRESSOR MAIN SWITCH	6	1
6K2	CONTATTORE COMPRESSORE / COMPRESSOR CONTACTOR	6	3
6K3	CONTATTORE COMPRESSORE / COMPRESSOR CONTACTOR	6	4
6K4	CONTATTORE COMPRESSORE / COMPRESSOR CONTACTOR	6	7
6K5	CONTATTORE COMPRESSORE / COMPRESSOR CONTACTOR	6	8
RH-01A	RESISTENZA CARTER / CRANKASE OIL HEATHER	7	0
RH-01B	RESISTENZA CARTER / CRANKASE OIL HEATHER	7	1
RH-02A	RESISTENZA CARTER / CRANKASE OIL HEATHER	7	1
7K1	MOTORE VENTILATORE / FAN MOTOR	7	2
RH-02B	RESISTENZA CARTER / CRANKASE OIL HEATHER	7	2
PSH-02A	PRESSOSTATO ON-OFF COND. / ON-OFF PRESSURE SWITCH	7	2
7K2	MOTORE VENTILATORE / FAN MOTOR	7	3
7K3	MOTORE VENTILATORE / FAN MOTOR	7	4
PSH-03A	PRESSOSTATO ON-OFF COND. / ON-OFF PRESSURE SWITCH	7	4
7K4	MOTORE VENTILATORE / FAN MOTOR	7	5
PSH-02B	PRESSOSTATO ON-OFF COND. / ON-OFF PRESSURE SWITCH	7	5
PSH-03B	PRESSOSTATO ON-OFF COND. / ON-OFF PRESSURE SWITCH	7	6
7K5	MOTORE VENTILATORE / FAN MOTOR	7	6
7K6	MOTORE VENTILATORE / FAN MOTOR	7	6
7TK3	TERMICO VENTILATORE / FAN TERMAL SWITCH	7	8
7TK2	TERMICO VENTILATORE / FAN TERMAL SWITCH	7	8
7TK1	TERMICO VENTILATORE / FAN TERMAL SWITCH	7	8
7K7	RELE' AUSILIARIO / AUXILIARY RELAY	7	8
7TK4	TERMICO VENTILATORE / FAN TERMAL SWITCH	7	9

REVISIONE	MODIFICA	PROGETTO: 85504260-013-A	FOGLIO 2
		COMMESSA: NCS 1202 - 1402 - 1502 US	
DATA	FIRMA	TITOLO:	1 <D> 3
		DIS.: DATA: 29/03/2017	

Description		Cable type	Cable name	----- Cable -----	Column
					4 5
					5 0
					5 2
					5 4
					5 5
					7 8
					7 9
					8 5
					9 5
					9 5
					4 5
					5 0
					5 2
					5 4
					5 5
					5 7
					5 8
					7 0
					7 1
					7 1
					7 2
					4 6
					8 0
					9 0
					4 5
					8 0
					9 0
					5 1
					8 3
					5 1
					5 3
					5 3
					8 2
					8 3
					8 3
					8 4
					8 4
					5 4
					9 3
					5 4
					5 4
					9 3
					5 4
					5 6
					5 6
					9 3
					9 3
					9 4
					9 4
					5 7
					5 8
					8 7
					8 6

Morsettiera
Terminals Layout

X

Destination	Term.	N°	Wire n°	Origin
SPIE1:L1/L	⊕	2	2	4Q2:2
SPIE2:L1/L	⊕	2		
SPIE3:L1/L	⊕	2		
SPIE4:L1/L	⊕	2		
7TK1:1	⊕	2	2	6K2:1
7TK4:1	⊕	2	2	6K4:1
8MCH1:C1/2	⊕	2		
8MCH1:C1/2	○	2	2	8MCH1:C1/2
	⊕	2	2	8MCH1:C1/2
	⊕	2	2	9ESP1:C6/7
	○	2	2	9ESP1:C6/7
	⊕	3	3	4TS1:4
	⊕	3	3	SPIE1:L2/N
	⊕	3	3	SPIE2:L2/N
	⊕	3	3	SPIE3:L2/N
	⊕	3	3	SPIE4:L2/N
6K1:A2	⊕	3	3	HY-01A:A2
6K5:A2	⊕	3	3	HY-01B:A2
	⊕	3	3	RH-01A:2
	⊕	3	3	RH-02A:2
	⊕	3	3	RH-01B:2
7K1:A2	⊕	3	3	RH-02B:2
	⊕	5	5	4CF1:14
	⊕	5	5	8MCH1:G
	⊕	5	5	9ESP1:G
	⊕	6	6	4TS1:5
	⊕	6	6	8MCH1:G0
	⊕	6	6	9ESP1:G0
SPIE1:M1	⊕	8		
	⊕	8	8	8MCH1:ID2
1Q2:1	○	9	9	SPIE1:M2
SPIE2:M1	○	10	10	1Q2:2
1Q3:1	○	11	11	SPIE2:M2
	⊕	12		
	⊕	12	12	1Q3:2
	⊕	12	12	7K7:2
	⊕	12	12	PSL-01A:NC
8MCH1:GND	⊕	12		
SPIE3:M1	⊕	13		
	⊕	13	13	9ESP1:ID7
1Q4:1	○	14	14	SPIE3:M2
SPIE4:M1	○	15	15	1Q4:2
1Q5:1	○	16	16	SPIE4:M2
	⊕	17	17	1Q5:2
	⊕	17		
	⊕	17	17	PSL-01B:NC
	⊕	17	17	9ESP1:GND
HY-01A:A1	○	18	18	6K2:2
	○	18	18	6K3:2
HY-01B:A1	○	19	19	6K4:2
	○	19	19	6K5:2
4Q1:1	○	20	20	8MCH1:ND3
6K2:A1	○	22	22	8MCH1:ND1

Description		Cable type	Cable name	----- Cable -----
REVISIONE / REVISION		Modifica / Modification		
DATA / DATE		Firma / Signature		
85504260-013-A				Project: 85504260 013 A
				Unit model: NCS 1202 - 1402 - 1502 US
				SHEET 2
				OF 3
				1 <> 3
DIS:			DATE: 29/03/2017	

