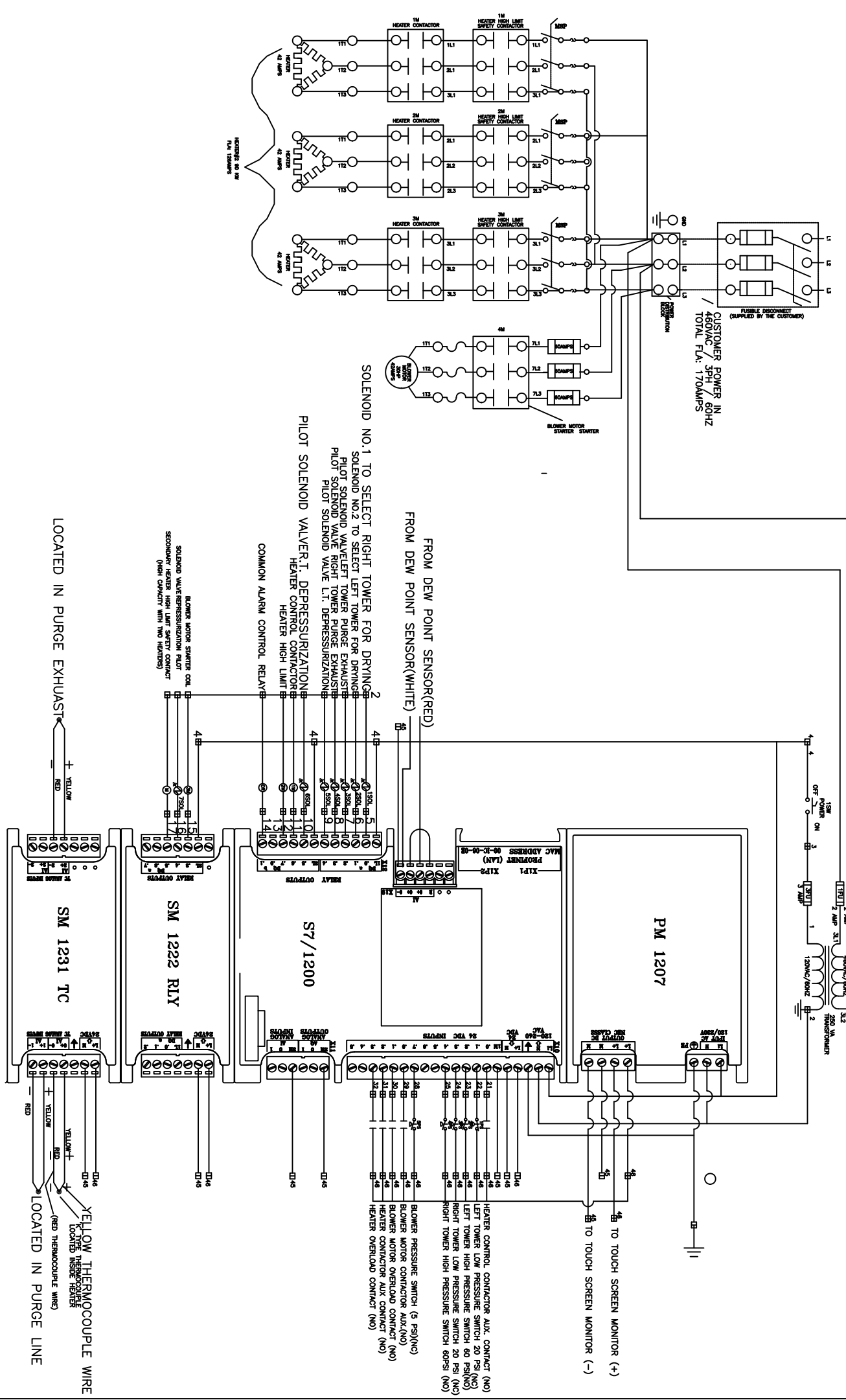


VOLTAGE	FULL LOAD AMPS (FLA)
480VAC/3PH/60HZ	170AMPS

ZONE	REV	ECO NO	REVISIONS	DATE	REV BY
00	XXXXX	RELEASED		MM-DD-YY	XXX

NOTE: IT IS RECOMMENDED TO INSTALL A FUSIBLE DISCONNECT OR CIRCUIT BREAKER TO MEET ANY FEDERAL STATE OR LOCAL ELECTRICAL CODES.



TOLERANCES U.O.S		FINISH:		THIRD ANGLE PROJECTION DO NOT SCALE DRAWING		NANO-PSI CORPORATION	
DIMENSIONS ARE IN INCHES		UNLESS NOTED		WD, BLOWER PURGE DRYER NBP-6000			
ONE DECIMAL PLACE ±0.1	TWO DECIMAL PLACES ±0.03	AS CAST UNLESS NOTED		SIZE	DATE	DWG NO.	REV
THREE DECIMAL PLACES ±0.010	ANGULAR DIMENSION ±1.0°			C	3-16-12	NBP-6000-E1	00
HOLE DIAMETER ±0.03				PROJ CODE	SCALE	WEIGHT	SHEET
				MZ	1:1	1 OF 1	