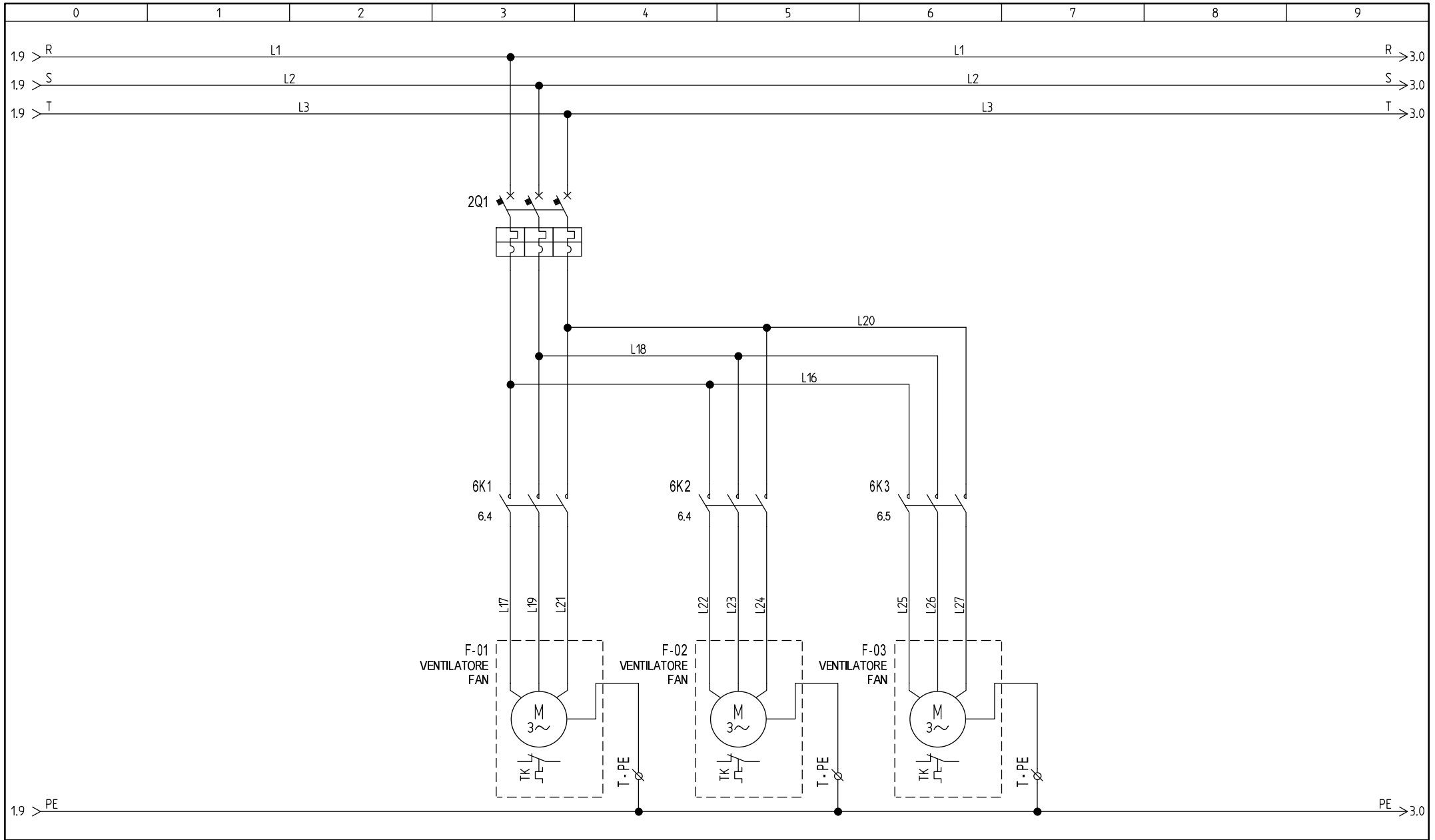


REV A	Modification EMISSIONE	Model: NCS 652 US	<p>This drawing is a property of nano-purification solutions and we reserve the copyright all our designs which cannot be reproduced, transmitted, disclosed to third parties or utilized in any form without first obtaining our written consent. Contravention will be prosecuted. This drawing is subject to modification time to time to suit construction purpose.</p> <p>File name: 85504240-013-A</p> <p>DRAFT.: DATE: 29/03/2017</p>	SHEET OF 1 8
29/03/2017	Drafter MU	Approved AC		Drawing no.: 85504240/013/A

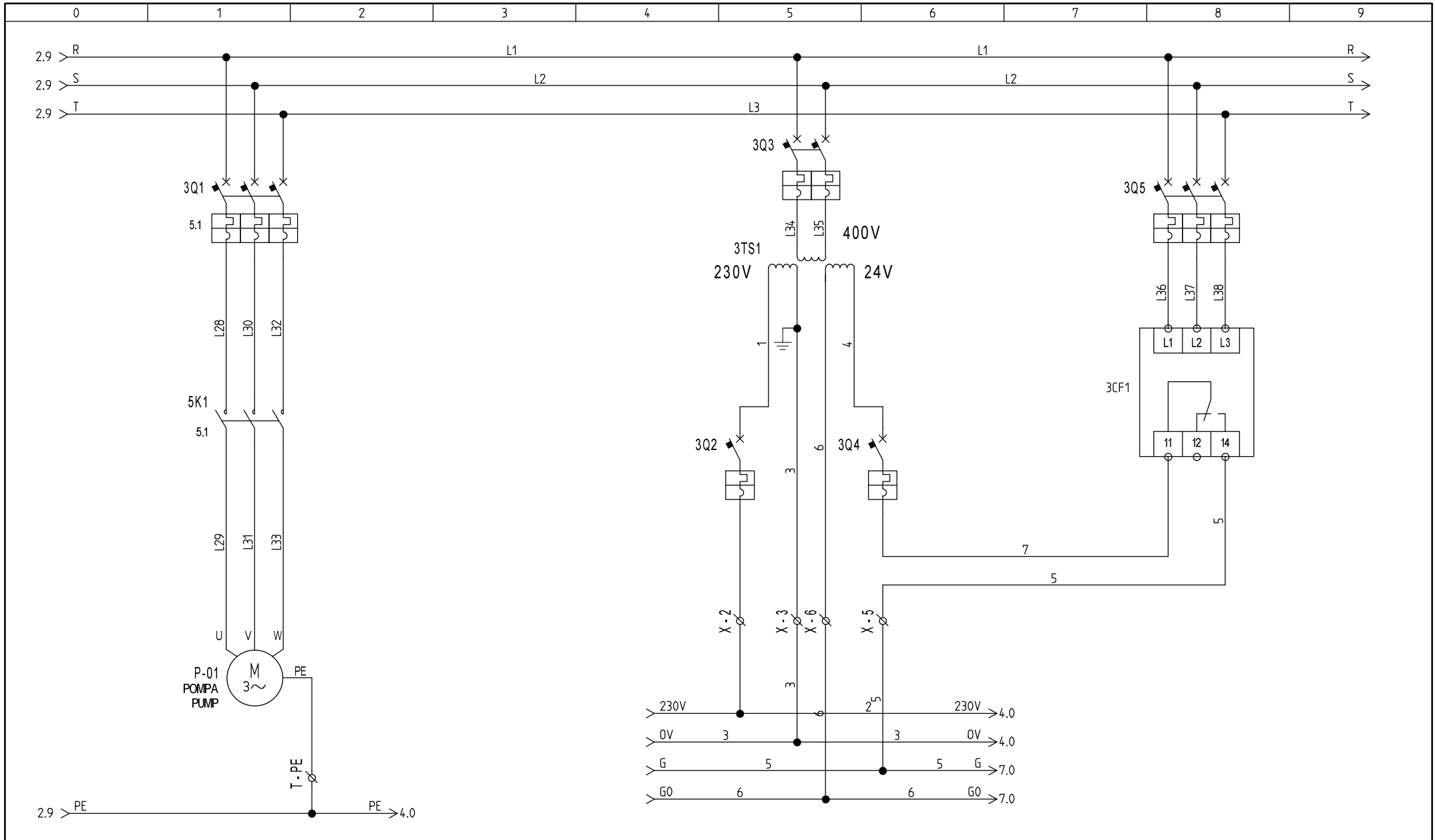


REV A	Modification EMISSIONE
29/03/2017	Drafter MU Approved AC

Model: NCS 652 US  
 Drawing no.: 85504240/013/A

This drawing is a property of nano-purification solutions and we reserve the copyright all our designs which cannot be reproduced, transmitted, disclosed to third parties or utilized in any form without first obtaining our written consent. Contravention will be prosecuted. This drawing is subject to modification time to time to suit construction purpose.

File name: 85504240-013-A  
 DRAFT.: DATE: 29/03/2017



REV A	Modification EMISSIONE
29/03/2017	Drafter MU Approved AC

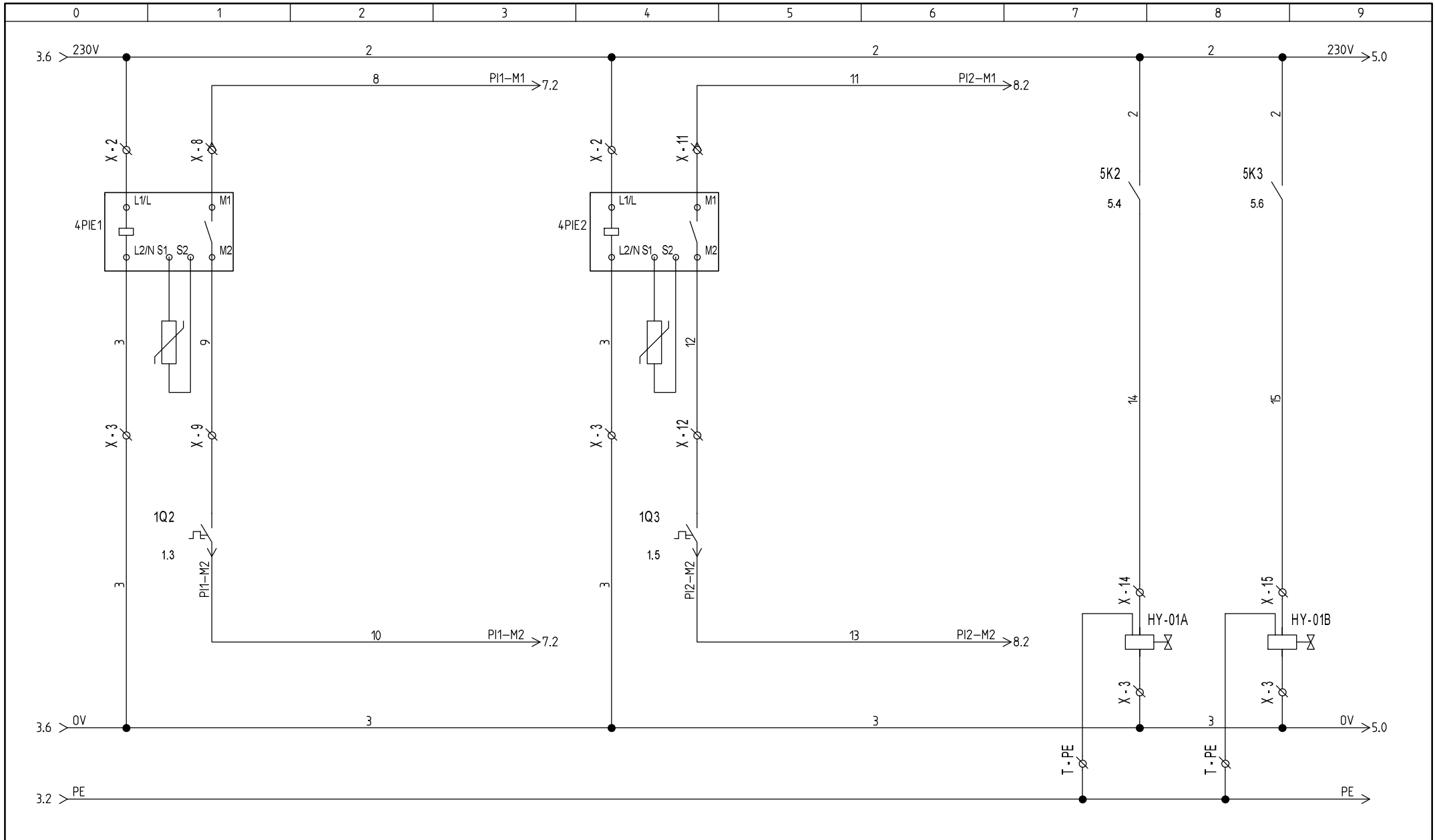
Model: NCS 652 US

Drawing no.: 85504240/013/A

This drawing is a property of nano-purification solutions and we reserve the copyright all our designs which cannot be reproduced, transmitted, disclosed to third parties or utilized in any form without first obtaining our written consent. Contravention will be prosecuted.  
This drawing is subject to modification time to time to suit construction purpose.

File name: 85504240-013-A

DRAFT.: DATE: 29/03/2017



REV A	Modification EMISSIONE
29/03/2017	Drafter MU Approved AC

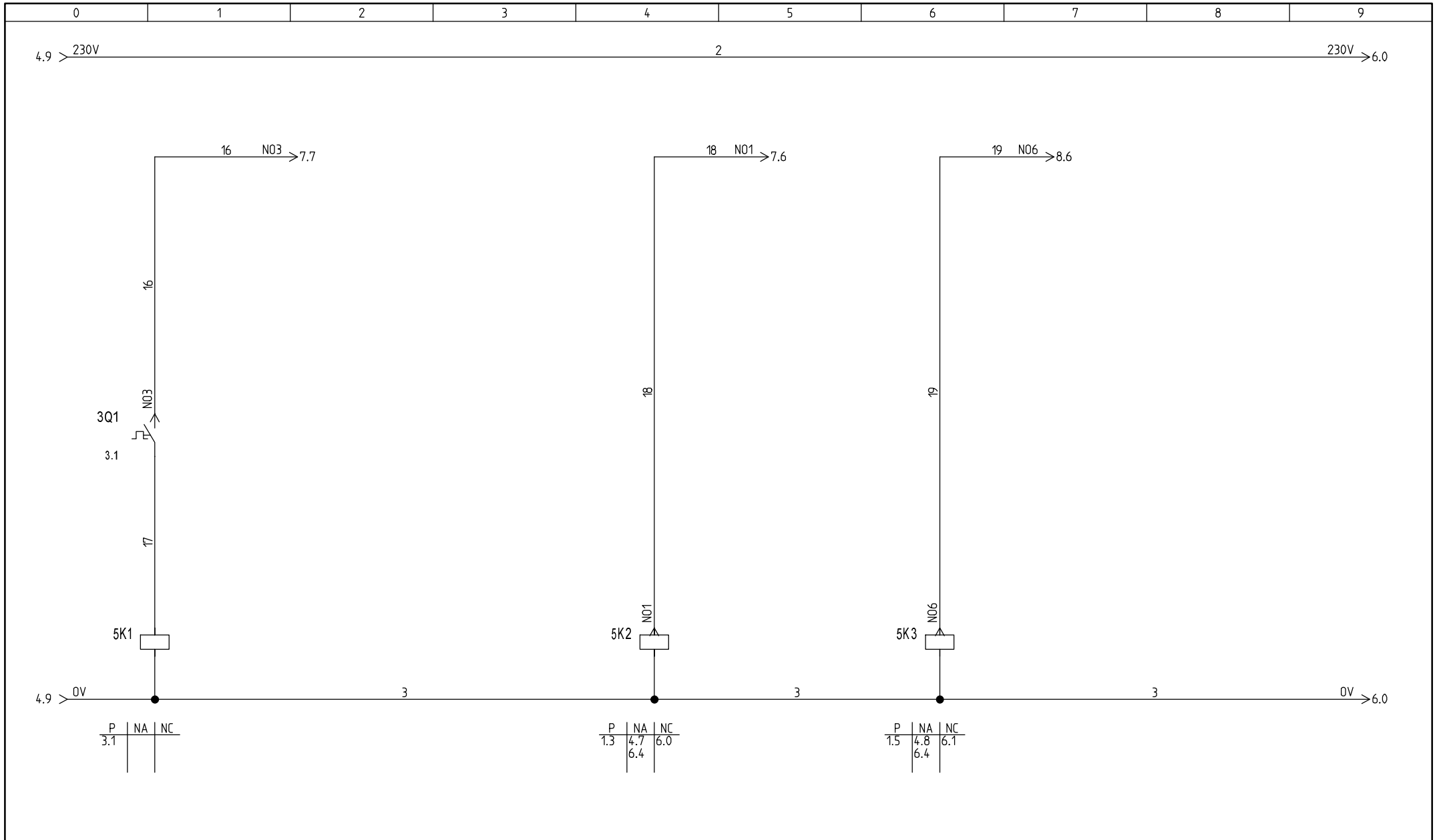
Model: NCS 652 US

Drawing no.: 85504240/013/A

This drawing is a property of nano-purification solutions and we reserve the copyright all our designs which cannot be reproduced, transmitted, disclosed to third parties or utilized in any form without first obtaining our written consent. Contravention will be prosecuted. This drawing is subject to modification time to time to suit construction purpose.

File name: 85504240-013-A

DRAFT.: DATE: 29/03/2017



REV A	Modification EMISSIONE
29/03/2017	Drafter MU Approved AC

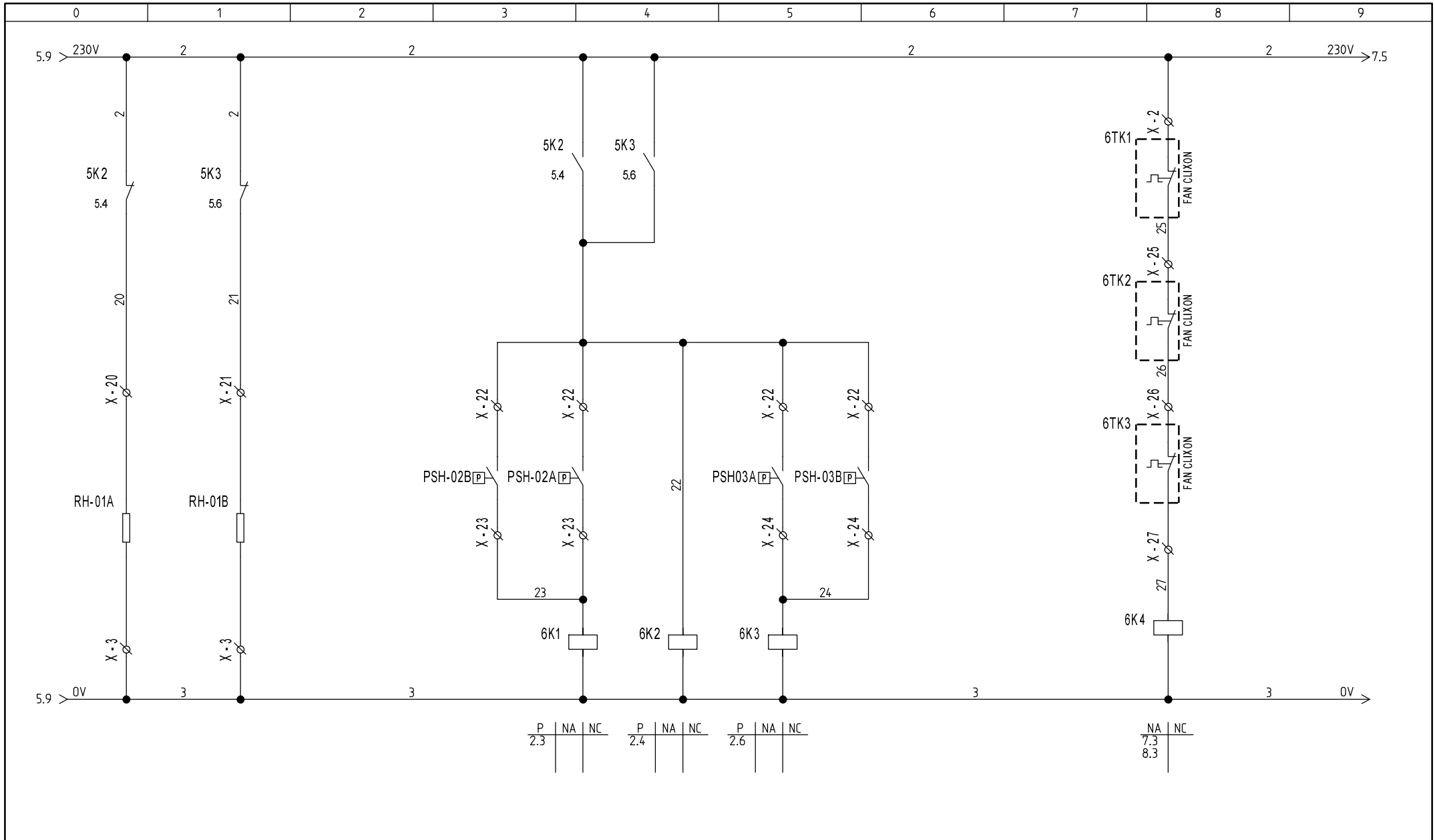
Model: NCS 652 US

Drawing no.: 85504240/013/A

This drawing is a property of nano-purification solutions and we reserve the copyright all our designs which cannot be reproduced, transmitted, disclosed to third parties or utilized in any form without first obtaining our written consent. Contravention will be prosecuted. This drawing is subject to modification time to time to suit construction purpose.

File name: 85504240-013-A

DRAFT.: DATE: 29/03/2017



REV A	Modification EMISSIONE
29/03/2017	Drafter MU Approved AC

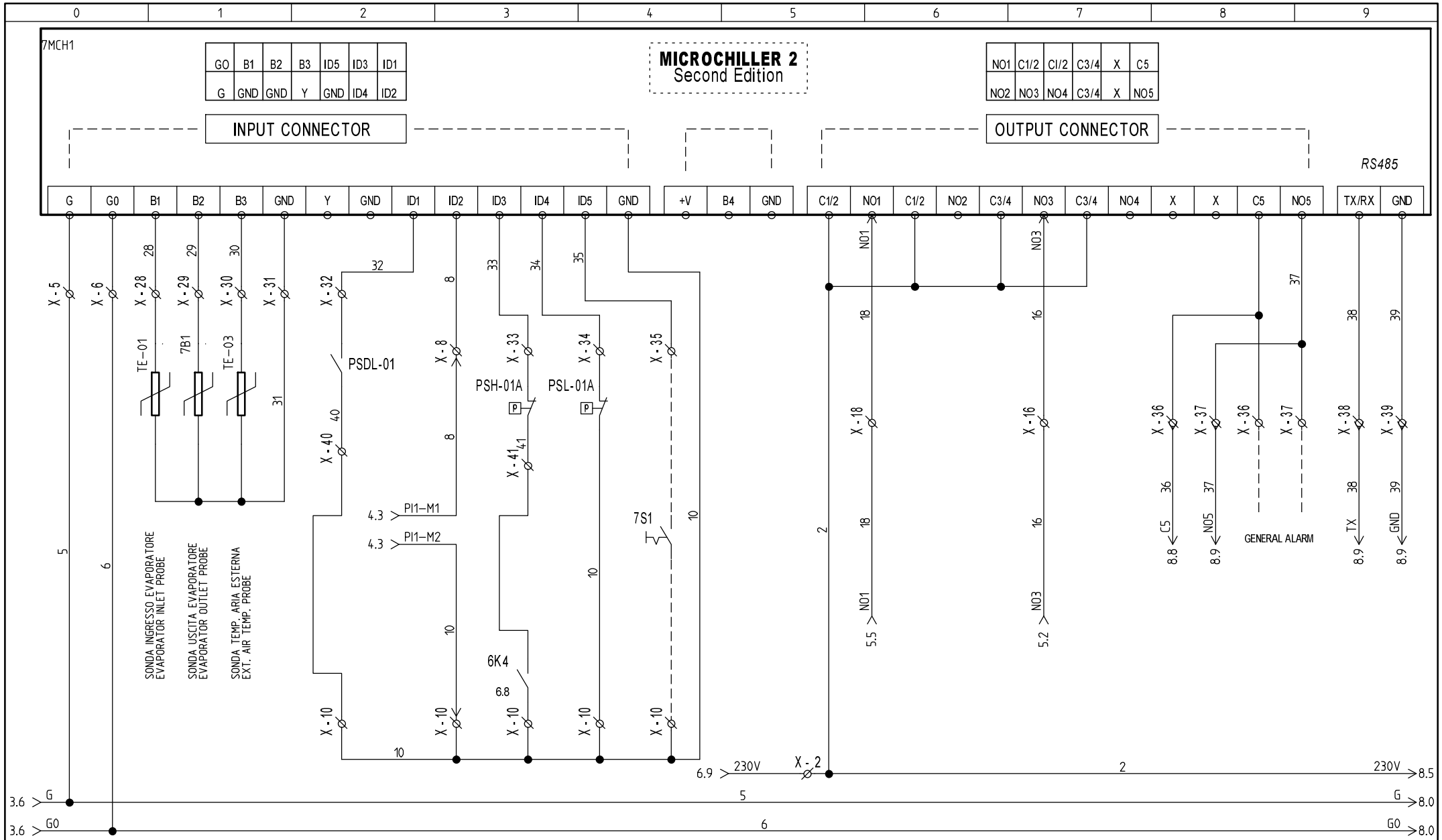
Model: NCS 652 US

Drawing no.: 85504240/013/A

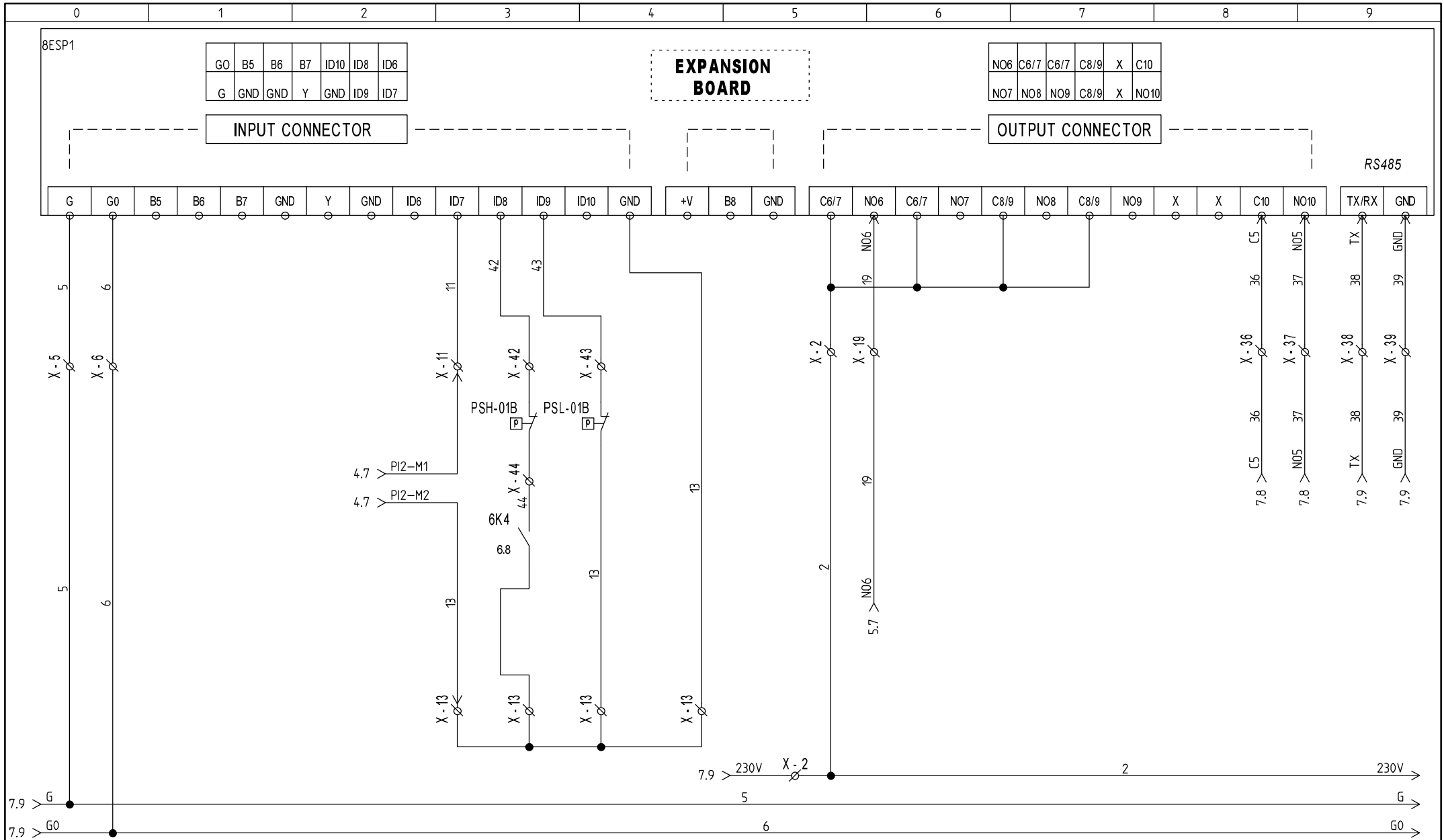
This drawing is a property of nano-purification solutions and we reserve the copyright all our designs which cannot be reproduced, transmitted, disclosed to third parties or utilized in any form without first obtaining our written consent. Contravention will be prosecuted.  
This drawing is subject to modification time to time to suit construction purpose.

File name: 85504240-013-A

DRAFT.: DATE: 29/03/2017



REV A	Modification EMISSIONE	Model: NCS 652 US	This drawing is a property of nano-purification solutions and we reserve the copyright all our designs which cannot be reproduced, transmitted, disclosed to third parties or utilized in any form without first obtaining our written consent. Contravention will be prosecuted. This drawing is subject to modification time to time to suit construction purpose.	SHEET <b>7</b>
29/03/2017	Drafter MU	Approved AC	File name: 85504240-013-A	OF <b>8</b>
Drawing no.: 85504240/013/A			DRAFT.:      DATE: 29/03/2017	6 ◀▶ 8



REV A	Modification EMISSIONE
29/03/2017	Drafter MU Approved AC

Model: NCS 652 US  
 Drawing no.: 85504240/013/A

This drawing is a property of nano-purification solutions and we reserve the copyright all our designs which cannot be reproduced, transmitted, disclosed to third parties or utilized in any form without first obtaining our written consent. Contravention will be prosecuted. This drawing is subject to modification time to time to suit construction purpose.

File name: 85504240-013-A  
 DRAFT.: DATE: 29/03/2017



# Components list

Item (-)	Description	Sheet	Column
1Q1	SEZIONATORE GENERALE / GENERAL MAIN SWITCH	1	0
1Q2	MAGNETOTERMICO COMPRESS. / COMPRESSOR MAIN SWITCH	1	3
K-01A	MOTORE COMPRESSORE / COMPRESSOR MOTOR	1	3
K-01B	MOTORE COMPRESSORE / COMPRESSOR MOTOR	1	5
1Q3	MAGNETOTERMICO COMPRESS. / COMPRESSOR MAIN SWITCH	1	5
2Q1	MAGNETOTERMICO VENTILATORE / FAN MAIN SWITCH	2	3
F-01	MOTORE VENTILATORE / FAN MOTOR	2	3
F-02	MOTORE VENTILATORE / FAN MOTOR	2	4
F-03	MOTORE VENTILATORE / FAN MOTOR	2	6
3Q1	MAGNETOTERMICO COMPRESS. / COMPRESSOR MAIN SWITCH	3	1
P-01	MOTORE POMPA / PUMP MOTOR	3	1
3Q3	MAGNETOTERMICO TRASF. / TRANSFORMER MAIN SWITCH	3	5
3Q2	MAGNETOTERMICO TRASF. / TRANSFORMER MAIN SWITCH	3	5
3TS1	TRASFORMATORE SERVIZI AUSILIARI / AUX. TRANSFORMER	3	5
3Q4	MAGNETOTERMICO TRASF. / TRANSFORMER MAIN SWITCH	3	6
3CF1	RELE' SEQUENZA FASI / PHASE SEQUENCE RELAY	3	8
3Q5	MAGNET. SEQ. FASI / SEQUENCE PHASE MAIN SWITCH	3	8
4PIE1	PROTEZIONE COMPRESSORE / COMP. MOTOR PROTECTION	4	0
1Q2	MAGNETOTERMICO COMPRESS. / COMPRESSOR MAIN SWITCH	4	1
4PIE2	PROTEZIONE COMPRESSORE / COMP. MOTOR PROTECTION	4	4
1Q3	MAGNETOTERMICO COMPRESS. / COMPRESSOR MAIN SWITCH	4	4
HY-01A	VALVOLA SOLENOIDE / SOLENOID VALVE	4	7
HY-01B	VALVOLA SOLENOIDE / SOLENOID VALVE	4	8
3Q1	MAGNETOTERMICO COMPRESS. / COMPRESSOR MAIN SWITCH	5	1
5K1	RELE' AUSILIARIO / AUXILIARY RELAY	5	1
5K2	CONTATTORE COMPRESSORE / COMPRESSOR CONTACTOR	5	4
5K3	CONTATTORE COMPRESSORE / COMPRESSOR CONTACTOR	5	6
RH-01A	RESISTENZA CARTER / CRANKASE OIL HEATHER	6	0
RH-01B	RESISTENZA CARTER / CRANKASE OIL HEATHER	6	1
PSH-02B	PRESSOSTATO ON-OFF COND. / ON-OFF PRESSURE SWITCH	6	3

REVISIONE	MODIFICA		PROGETTO: 85504240-013-A	FOGLIO 1
			COMMESSA: NCS 652 US	
DATA	FIRMA		TITOLO:	◀▶ 2
			DIS.:	





Description	Cable type	Cable name	Column
			Sheet
			3 5
			4 0
			4 4
			6 8
			7 5
			8 5
			8 5
			3 5
			4 0
			4 4
			4 7
			4 8
			6 0
			6 1
			3 6
			7 0
			8 0
			3 5
			7 0
			8 0
			4 1
			7 3
			4 1
			7 2
			7 3
			7 3
			7 4
			7 4
			4 4
			4 4
			8 3
			4 4
			8 3
			8 4
			8 4
			4 7
			4 8
			7 7
			7 6
			8 6
			6 0
			6 1
			6 3
			6 4
			6 4
			6 5
			6 6
			6 8

Morsettiera  
Terminals Layout

X

Destination	Term.	N°	Wire n°	Origin
4PIE1:L1/L	⊕	2	2	3Q2:2
4PIE2:L1/L	⊕	2	2	5K2:1
6TK1:1	⊕	2	2	5K3:1
7MCH1:C1/2	⊕	2	2	
7MCH1:C1/2	○	2	2	7MCH1:C1/2
	○	2	2	7MCH1:C1/2
	⊕	2	2	8ESP1:C6/7
	○	2	2	8ESP1:C6/7
	⊕	3	3	3TS1:4
	⊕	3	3	4PIE1:L2/N
	⊕	3	3	4PIE2:L2/N
	⊕	3	3	HY-01A:A2
5K1:A2	⊕	3	3	HY-01B:A2
5K3:A2	⊕	3	3	RH-01A:2
6K1:A2	⊕	3	3	RH-01B:2
	⊕	5	5	3CF1:14
	⊕	5	5	7MCH1:G
	⊕	5	5	8ESP1:G
	⊕	6	6	3TS1:5
	⊕	6	6	7MCH1:G0
	⊕	6	6	8ESP1:G0
4PIE1:M1	⊕	8	8	7MCH1:ID2
1Q2:1	○	9	9	4PIE1:M2
	⊕	10	10	
	⊕	10	10	1Q2:2
	⊕	10	10	6K4:2
	⊕	10	10	PSL-01A:NC
7MCH1:GND	⊕	10	10	
4PIE2:M1	⊕	11	11	
	⊕	11	11	8ESP1:ID7
	○	12	12	4PIE2:M2
1Q3:1	⊕	13	13	1Q3:2
	⊕	13	13	PSL-01B:NC
	⊕	13	13	8ESP1:GND
HY-01A:A1	○	14	14	5K2:2
HY-01B:A1	○	15	15	5K3:2
3Q1:1	○	16	16	7MCH1:IN03
5K2:A1	○	18	18	7MCH1:IND1
5K3:A1	○	19	19	8ESP1:IN06
RH-01A:1	○	20	20	5K2:2
RH-01B:1	○	21	21	5K3:2
PSH-02B:NA	⊕	22	22	
PSH-02A:NA	⊕	22	22	5K2:2
	○	22	22	5K3:2
PSH03A:NA	⊕	22	22	6K2:A1
PSH-03B:NA	⊕	22	22	
6K1:A1	○	23	23	PSH-02B:COM
6K1:A1	○	23	23	PSH-02A:COM
6K3:A1	○	24	24	PSH03A:COM
6K3:A1	○	24	24	PSH-03B:COM
6TK2:1	○	25	25	6TK1:2

Description	Cable type	Cable name	----- Cable -----
-------------	------------	------------	-------------------

REVISIONE / REVISION	Modifica / Modification	85504240-013-A	Project:	85504240-013-A	SHEET	2
DATA / DATE	Firma / Signature		Unit model:	NCS 652 US	OF	3
			X		1 <> 3	
			DIS:	DATE:	29/03/2017	

