

REV A	Modification EMISSIONE
29/03/2017	Drafter MU Approved AC

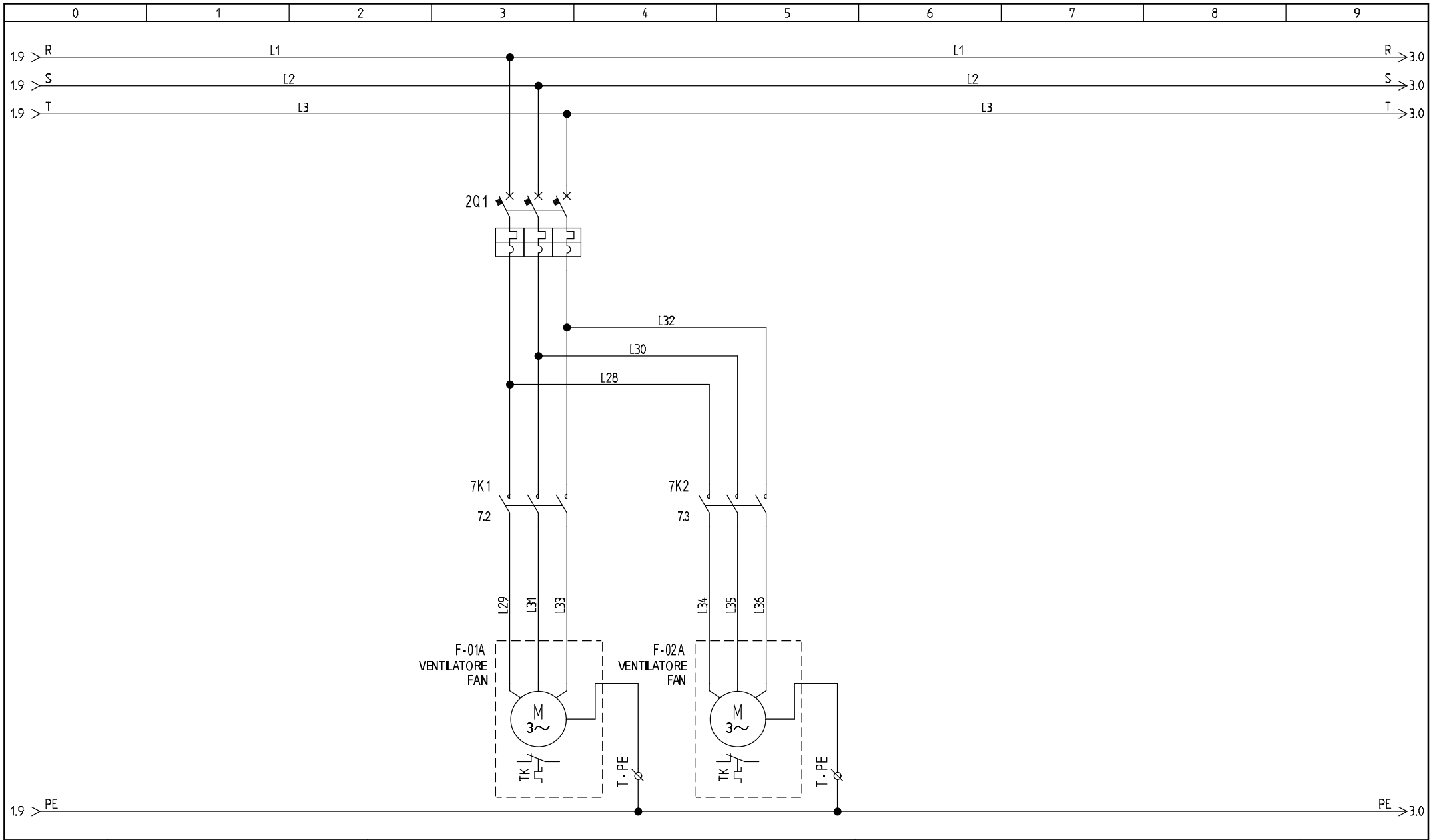
Model: NCS 802 US

Drawing no.: 85504250/013/A

This drawing is a property of nano-purification solutions and we reserve the copyright to all our designs which cannot be reproduced, transmitted, disclosed to third parties or utilized in any form without first obtaining our written consent. Contravention will be prosecuted. This drawing is subject to modification time to time to suit construction purpose.

File name: 85504250-013-A

DRAFT.: DATE: 29/03/2017

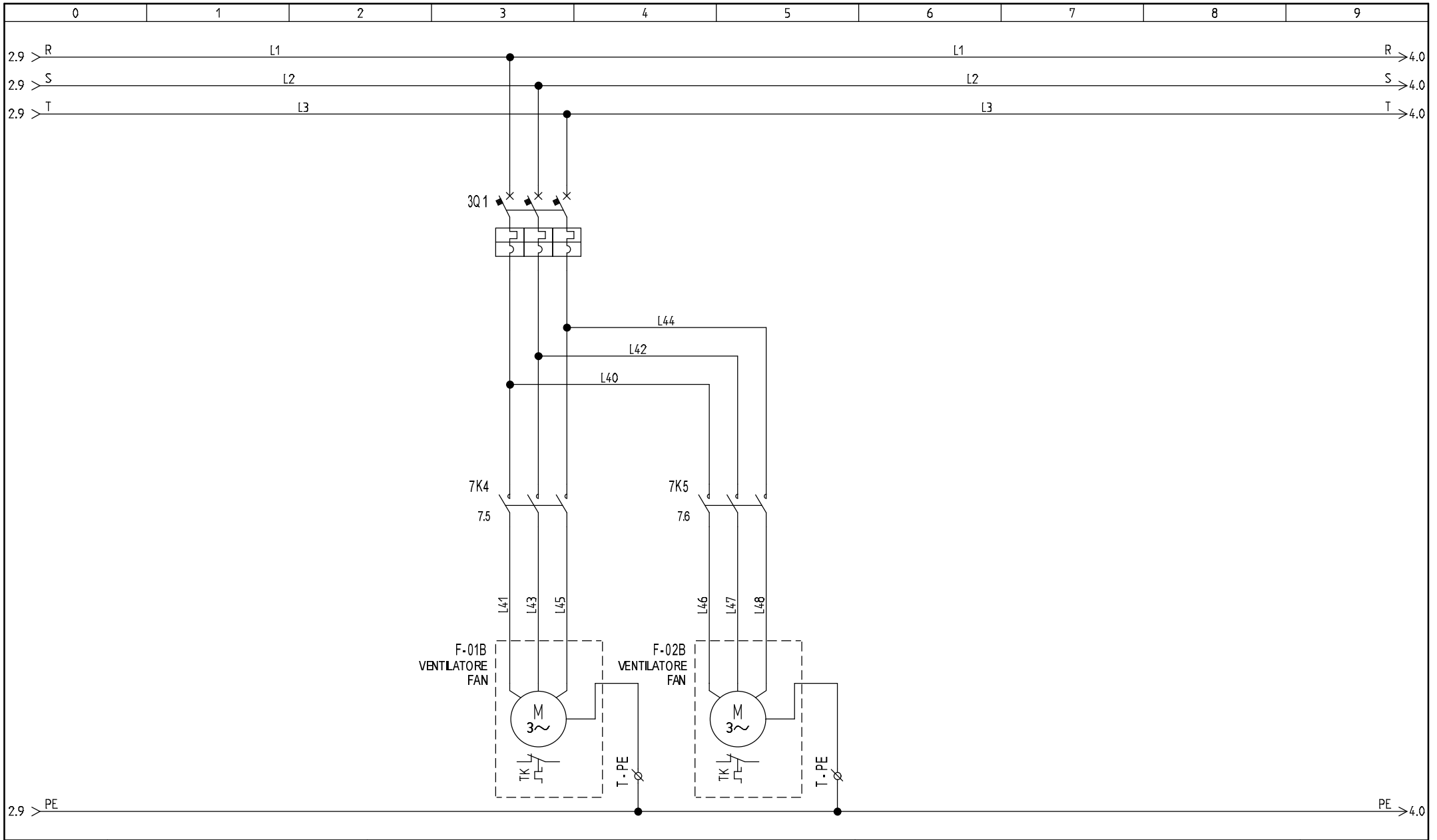


REV A	Modification EMISSIONE
29/03/2017	Drafter MU Approved AC

Model: NCS 802 US
 Drawing no.: 85504250/013/A

This drawing is a property of nano-purification solutions and we reserve the copyright to all our designs which cannot be reproduced, transmitted, disclosed to third parties or utilized in any form without first obtaining our written consent. Contravention will be prosecuted. This drawing is subject o modification time to time to suit construction purpose.

File name: 85504250-013-A
 DRAFT.: DATE: 29/03/2017

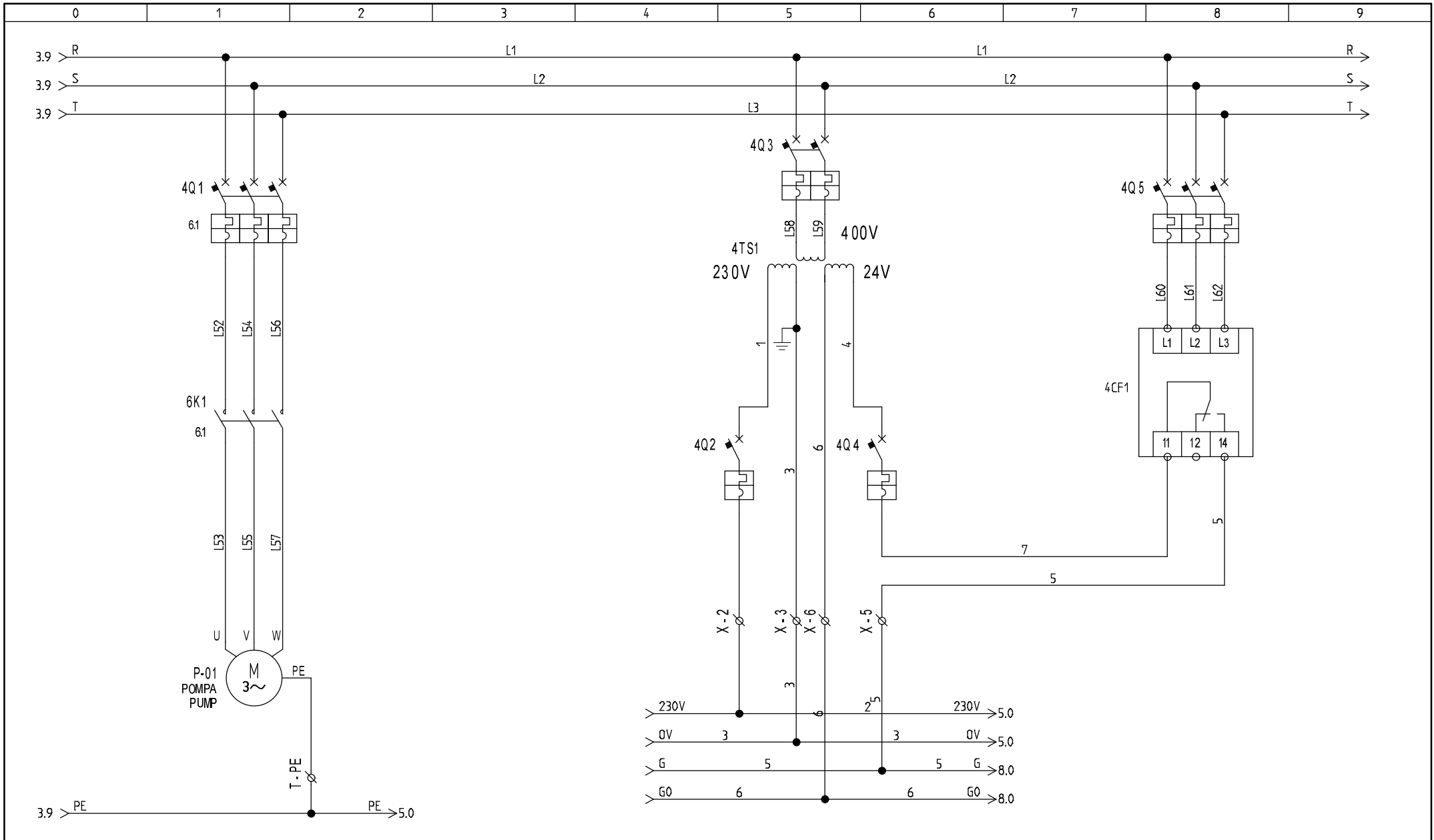


REV A	Modification EMISSIONE
29/03/2017	Drafter MU Approved AC

Model: NCS 802 US
 Drawing no.: 85504250/013/A

This drawing is a property of nano-purification solutions and we reserve the copyright to all our designs which cannot be reproduced, transmitted, disclosed to third parties or utilized in any form without first obtaining our written consent. Contravention will be prosecuted. This drawing is subject o modification time to time to suit construction purpose.

File name: 85504250-013-A
 DRAFT.: DATE: 29/03/2017

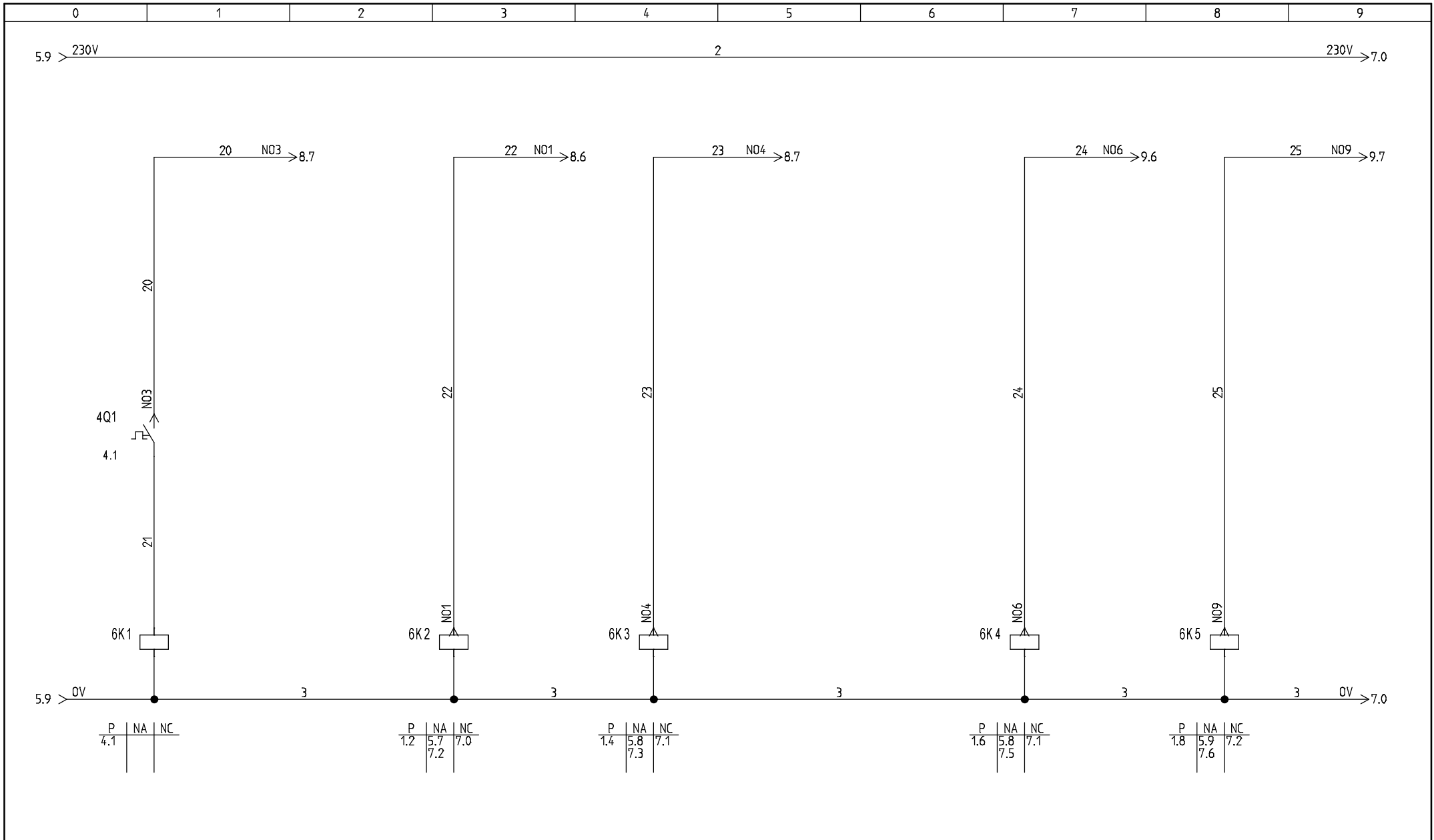


REV A	Modification EMISSIONE
29/03/2017	Drafter MU Approved AC

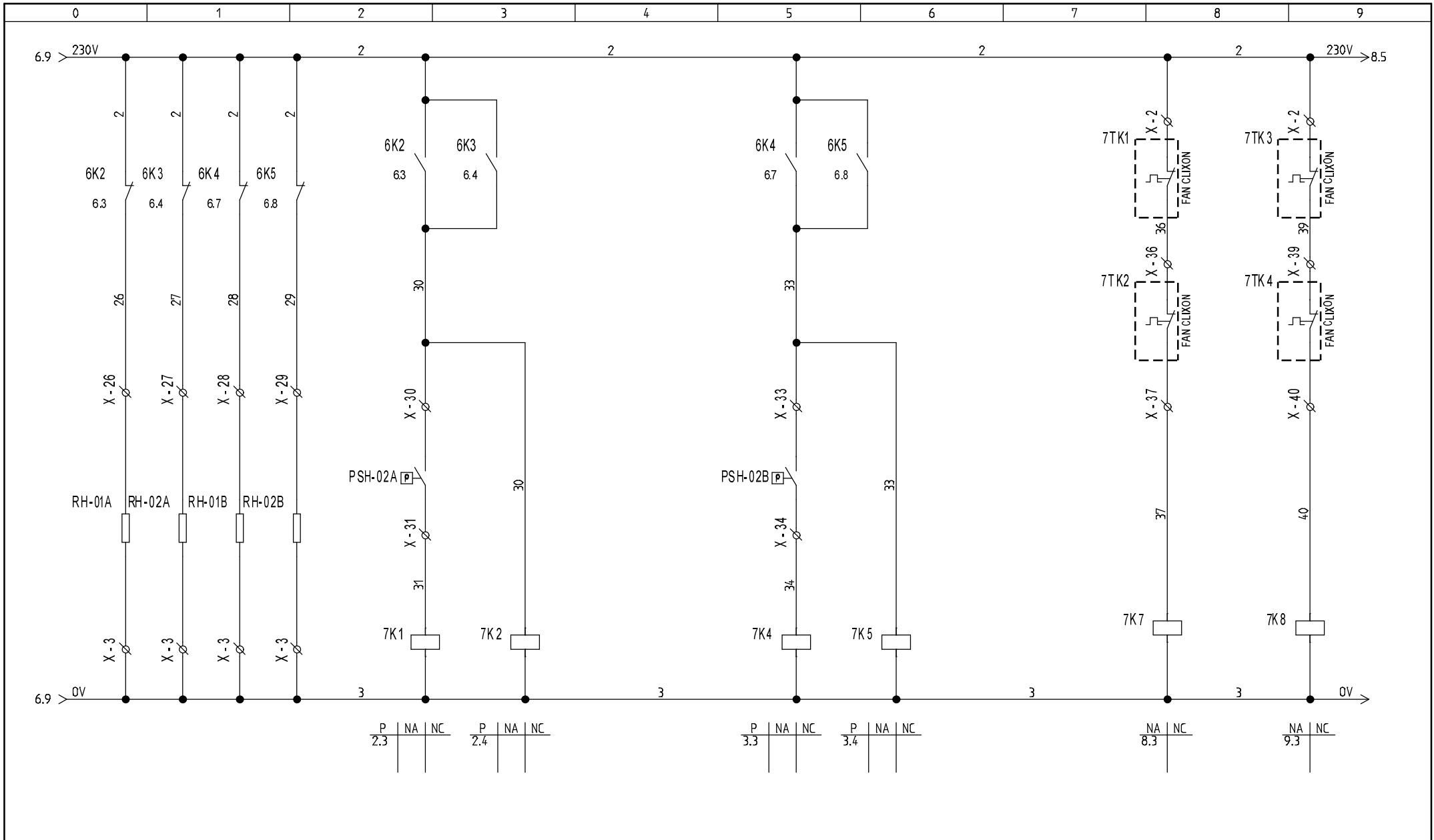
Model: NCS 802 US
 Drawing no.: 85504250/013/A

This drawing is a property of nano-purification solutions and we reserve the copyright to all our designs which cannot be reproduced, transmitted, disclosed to third parties or utilized in any form without first obtaining our written consent. Contravention will be prosecuted. This drawing is subject to modification time to time to suit construction purpose.

File name: 85504250-013-A
 DRAFT.: DATE: 29/03/2017



REV A	Modification EMISSIONE	Model: NCS 802 US	<p>This drawing is a property of nano-purification solutions and we reserve the copyright to all our designs which cannot be reproduced, transmitted, disclosed to third parties or utilized in any form without first obtaining our written consent. Contravention will be prosecuted. This drawing is subject to modification time to time to suit construction purpose.</p> <p>File name: 85504250-013-A</p> <p>DRAFT.: DATE: 29/03/2017</p>	SHEET 6
29/03/2017	Drafter MU	Approved AC		Drawing no.: 85504250/013/A
				5 <> 7

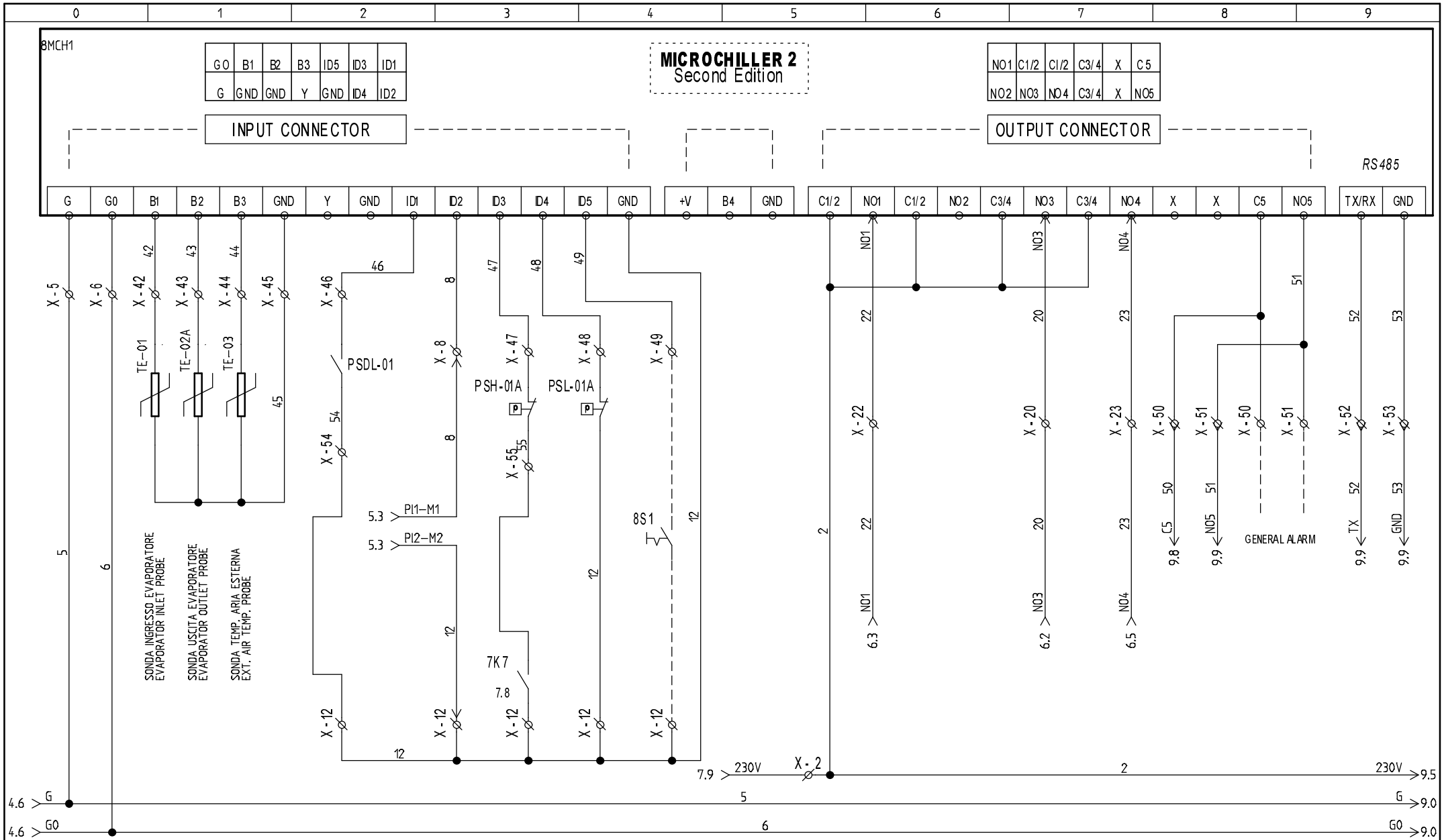


REV A	Modification EMISSIONE
29/03/2017	Drafter MU Approved AC

Model: NCS 802 US
 Drawing no.: 85504250/013/A

This drawing is a property of nano-purification solutions and we reserve the copyright to all our designs which cannot be reproduced, transmitted, disclosed to third parties or utilized in any form without first obtaining our written consent. Contravention will be prosecuted. This drawing is subject to modification time to time to suit construction purpose.

File name: 85504250-013-A
 DRAFT.: DATE: 29/03/2017



REV A	Modification EMISSIONE
29/03/2017	Drafter MU Approved AC

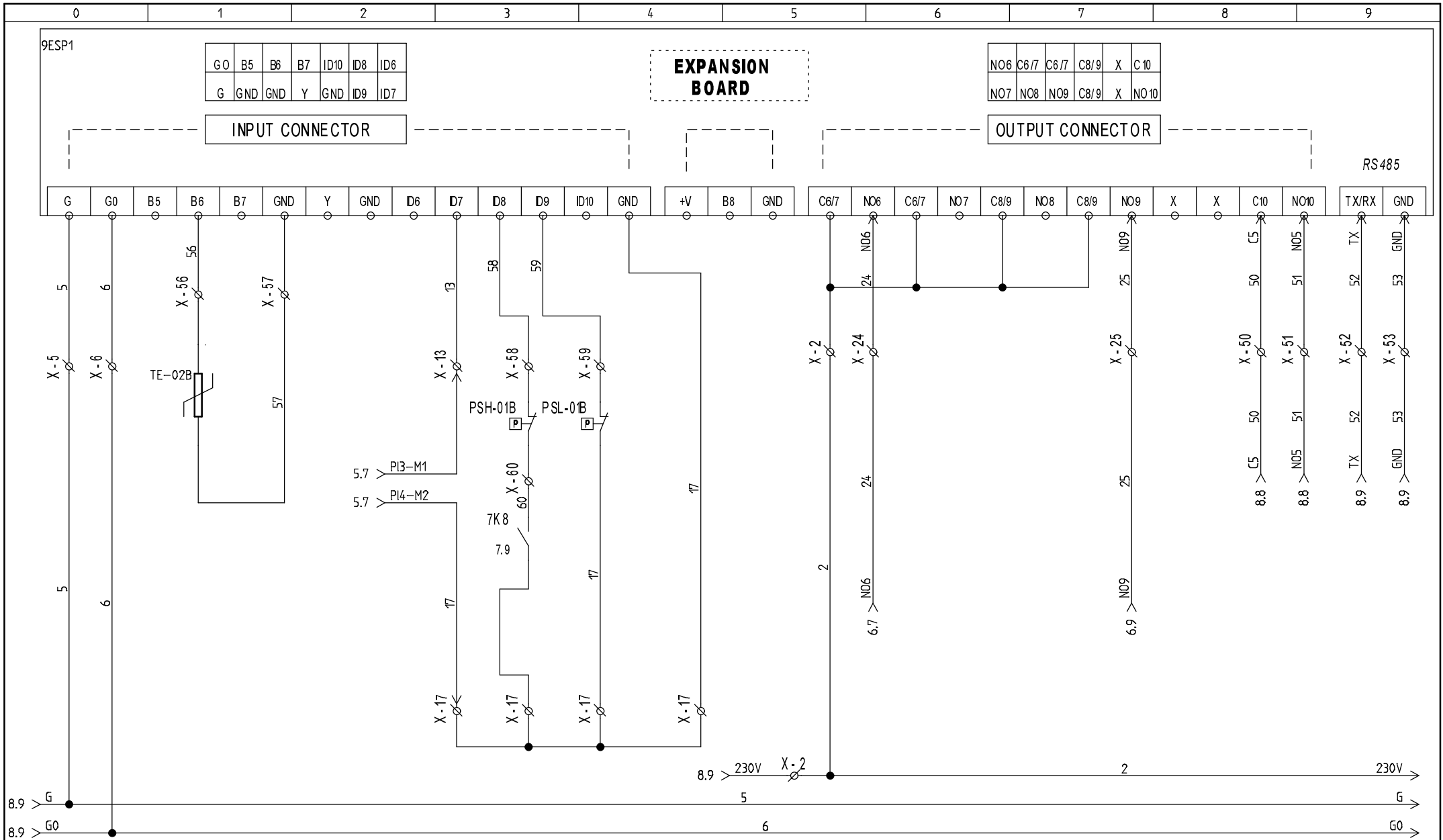
Model: NCS 802 US

Drawing no.: 85504250/013/A

This drawing is a property of nano-purification solutions and we reserve the copyright to all our designs which cannot be reproduced, transmitted, disclosed to third parties or utilized in any form without first obtaining our written consent. Contravention will be prosecuted. This drawing is subject a modification time to time to suit construction purpose.

File name: 85504250-013-A

DRAFT.: DATE: 29/03/2017



REV A	Modification EMISSIONE
29/03/2017	Drafter MU Approved AC

Model: NCS 802 US
 Drawing no.: 85504250/013/A

This drawing is a property of nano-purification solutions and we reserve the copyright to all our designs which cannot be reproduced, transmitted, disclosed to third parties or utilized in any form without first obtaining our written consent. Contravention will be prosecuted. This drawing is subject o modification time to time to suit construction purpose.

File name: 85504250-013-A
 DRAFT.: DATE: 29/03/2017

Components list

Item (-)	Description	Sheet	Column
1Q1	SEZIONATORE GENERALE / GENERAL MAIN SWITCH	1	0
1Q2	MAGNETOTERMICO COMPRESS. / COMPRESSOR MAIN SWITCH	1	2
K-01A	MOTORE COMPRESSORE / COMPRESSOR MOTOR	1	2
K-02A	MOTORE COMPRESSORE / COMPRESSOR MOTOR	1	4
1Q3	MAGNETOTERMICO COMPRESS. / COMPRESSOR MAIN SWITCH	1	4
1Q4	MAGNETOTERMICO COMPRESS. / COMPRESSOR MAIN SWITCH	1	6
K-01B	MOTORE COMPRESSORE / COMPRESSOR MOTOR	1	6
1Q5	MAGNETOTERMICO COMPRESS. / COMPRESSOR MAIN SWITCH	1	8
K-02B	MOTORE COMPRESSORE / COMPRESSOR MOTOR	1	8
2Q1	MAGNETOTERMICO VENTILATORE / FAN MAIN SWITCH	2	3
F-01A	MOTORE VENTILATORE / FAN MOTOR	2	3
F-02A	MOTORE VENTILATORE / FAN MOTOR	2	4
3Q1	MAGNETOTERMICO VENTILATORE / FAN MAIN SWITCH	3	3
F-01B	MOTORE VENTILATORE / FAN MOTOR	3	3
F-02B	MOTORE VENTILATORE / FAN MOTOR	3	4
P-01	MOTORE POMPA / PUMP MOTOR	4	1
4Q1	MAGNETOTERMICO COMPRESS. / COMPRESSOR MAIN SWITCH	4	1
4Q3	MAGNETOTERMICO TRASF. / TRANSFORMER MAIN SWITCH	4	5
4Q2	MAGNETOTERMICO TRASF. / TRANSFORMER MAIN SWITCH	4	5
4TS1	TRASFORMATORE SERVIZI AUSILIARI / AUX. TRANSFORMER	4	5
4Q4	MAGNETOTERMICO TRASF. / TRANSFORMER MAIN SWITCH	4	6
4CF1	RELE' SEQUENZA FASI / PHASE SEQUENCE RELAY	4	8
4Q5	MAGNET. SEQ. FASI / SEQUENCE PHASE MAIN SWITCH	4	8
5PIE1	PROTEZIONE COMPRESSORE / COMP. MOTOR PROTECTION	5	0
1Q3	MAGNETOTERMICO COMPRESS. / COMPRESSOR MAIN SWITCH	5	1
1Q2	MAGNETOTERMICO COMPRESS. / COMPRESSOR MAIN SWITCH	5	1
1Q5	MAGNETOTERMICO COMPRESS. / COMPRESSOR MAIN SWITCH	5	4
1Q4	MAGNETOTERMICO COMPRESS. / COMPRESSOR MAIN SWITCH	5	4
5PIE3	PROTEZIONE COMPRESSORE / COMP. MOTOR PROTECTION	5	4
HY-01A	VALVOLA SOLENOIDE / SOLENOID VALVE	5	7
REVISIONE	MODIFICA	PROGETTO: 85504250-013-A	FOGLIO 1
		COMMESSA: NCS 802 US	DI 3
DATA	FIRMA	CLIENTE:	
		TITOLO:	◀▶ 2
		DIS.:	DATA: 29/03/2017

Components list

Item (-)	Description	Sheet	Column
HY-01B	VALVOLA SOLENOIDE / SOLENOID VALVE	5	8
6K1	RELE' AUSILIARIO / AUXILIARY RELAY	6	1
4Q1	MAGNETOTERMICO COMPRESS. / COMPRESSOR MAIN SWITCH	6	1
6K2	CONTATTORE COMPRESSORE / COMPRESSOR CONTACTOR	6	3
6K3	CONTATTORE COMPRESSORE / COMPRESSOR CONTACTOR	6	4
6K4	CONTATTORE COMPRESSORE / COMPRESSOR CONTACTOR	6	7
6K5	CONTATTORE COMPRESSORE / COMPRESSOR CONTACTOR	6	8
RH-01A	RESISTENZA CARTER / CRANKASE OIL HEATHER	7	0
RH-02A	RESISTENZA CARTER / CRANKASE OIL HEATHER	7	1
RH-01B	RESISTENZA CARTER / CRANKASE OIL HEATHER	7	1
PSH-02A	PRESSOSTATO ON-OFF COND. / ON-OFF PRESSURE SWITCH	7	2
7K1	MOTORE VENTILATORE / FAN MOTOR	7	2
RH-02B	RESISTENZA CARTER / CRANKASE OIL HEATHER	7	2
7K2	MOTORE VENTILATORE / FAN MOTOR	7	3
7K4	MOTORE VENTILATORE / FAN MOTOR	7	5
PSH-02B	PRESSOSTATO ON-OFF COND. / ON-OFF PRESSURE SWITCH	7	5
7K5	MOTORE VENTILATORE / FAN MOTOR	7	6
7TK1	TERMICO VENTILATORE / FAN TERMAL SWITCH	7	8
7TK2	TERMICO VENTILATORE / FAN TERMAL SWITCH	7	8
7K7	RELE' AUSILIARIO / AUXILIARY RELAY	7	8
7TK4	TERMICO VENTILATORE / FAN TERMAL SWITCH	7	9
7TK3	TERMICO VENTILATORE / FAN TERMAL SWITCH	7	9
7K8	RELE' AUSILIARIO / AUXILIARY RELAY	7	9
8MCH1	REGOLATORE ELETTRONICO / ELECTRONIC CONTOLLER	8	0
TE-03	SONDA TEMP. ARIA ESTERNA / EXT. AIR TEMP. PROBE	8	1
TE-01	SONDA DI REGOLAZIONE / REGULATING PROBE	8	1
TE-02A	SONDA ANTIGELO / ANTI FREEZE PROBE	8	1
PSDL-01	PRESSOSTATO DIFFERENZIALE / DIFF. PRESSURE SWITCH	8	2
PSH-01A	PRESSOSTATO DI ALTA / HIGH PRESSURE SWITCH	8	3
8S1	SELETTORE ON-OFF REMOTO / REMOTE ON-OFF SELECTOR	8	4
REVISIONE	MODIFICA	PROGETTO: 85504250-013-A	FOGLIO 2
		COMMESSA: NCS 802 US	DI 3
		CLIENTE:	
DATA	FIRMA	TITOLO:	1 <D> 3
		DIS.:	DATA: 29/03/2017

Description	Cable type	Cable name	Column
			Sheet
			4 5
			5 0
			5 4
			7 8
			7 9
			8 5
			9 5
			9 5
			4 5
			5 0
			5 4
			5 7
			5 8
			7 0
			7 1
			7 1
			7 2
			4 6
			8 0
			9 0
			4 5
			8 0
			9 0
			5 1
			8 3
			5 1
			8 2
			8 3
			8 3
			8 4
			8 4
			5 4
			9 3
			5 4
			9 3
			9 3
			9 4
			9 4
			5 7
			5 8
			5 8
			7 2

Morsettiera
Terminals Layout

X

Destination	Term.	N°	Wire n°	Origin
		2	2	4Q2:2
5PIE1:1/L	⊗	2	2	
5PIE3:1/L	⊗	2	2	6K2:1
7TK1:1	⊗	2	2	6K4:1
7TK3:1	⊗	2	2	
8MCH1:C1/2	⊗	2	2	
8MCH1:C1/2	○	2	2	8MCH1:C1/2
	⊗	2	2	8MCH1:C1/2
	⊗	2	2	9ESP1:C6/7
	○	2	2	9ESP1:C6/7
	⊗	3	3	4TS1:4
	⊗	3	3	5PIE1:1:2/N
	⊗	3	3	5PIE3:1:2/N
	⊗	3	3	HY-01A:A2
6K1:A2	⊗	3	3	HY-01B:A2
6K5:A2	⊗	3	3	RH-01A:2
	⊗	3	3	RH-02A:2
	⊗	3	3	RH-01B:2
7K1:A2	⊗	3	3	RH-02B:2
	⊗	5	5	4CF1:14
	⊗	5	5	8MCH1:G
	⊗	5	5	9ESP1:G
	⊗	6	6	4TS1:5
	⊗	6	6	8MCH1:G0
	⊗	6	6	9ESP1:G0
5PIE1:M1	⊗	8	8	8MCH1:ID2
1Q2:1	○	9	9	5PIE1:M2
	⊗	12	12	1Q3:2
	⊗	12	12	7K7:2
	⊗	12	12	PSL-01A:NC
8MCH1:GND	⊗	12	12	
5PIE3:M1	⊗	13	13	
1Q4:1	○	14	14	9ESP1:ID7
	⊗	17	17	5PIE3:M2
	⊗	17	17	1Q5:2
	⊗	17	17	PSL-01B:NC
	⊗	17	17	9ESP1:GND
HY-01A:A1	○	18	18	6K2:2
HY-01B:A1	○	18	18	6K3:2
	○	19	19	6K4:2
	○	19	19	6K5:2
4Q1:1	○	20	20	8MCH1:ND3
6K2:A1	○	22	22	8MCH1:ND1
6K3:A1	○	23	23	8MCH1:ND4
6K4:A1	○	24	24	9ESP1:ND6
6K5:A1	○	25	25	9ESP1:ND9
RH-01A:1	○	26	26	6K2:2
RH-02A:1	○	27	27	6K3:2
RH-01B:1	○	28	28	6K4:2
RH-02B:1	○	29	29	6K5:2
PSH-02A:NA	○	30	30	6K2:2

Description	Cable type	Cable name
REVISIONE / REVISION	Modifica / Modification	
DATA / DATE	Firma / Signature	

85504250-013-A

Project:	85504250-013-A	SHEET	2
Unit model:	NCS 802 US	OF	3
X		1	◀▶ 3
DIS:		DATE:	29/03/2017

