

Schema Elettrico / Wiring Diagram

Progetto / Project:

85504190UL01-A

Modello macchina / Machine model:

NCS 0251 US

Dati elettrici / Electrical data

Alimentazione elettrica / Power supply

460V/3F/60HZ

Tensione ausiliari / Auxiliary Voltage:

230VAC – 24VAC

Limiti operativi / Operating limits

Range di tensione / Voltage range

+/- 10%

Squilibrio tensione / Voltage unbalance:

+/- 2%

Range di frequenza / Frequency range:

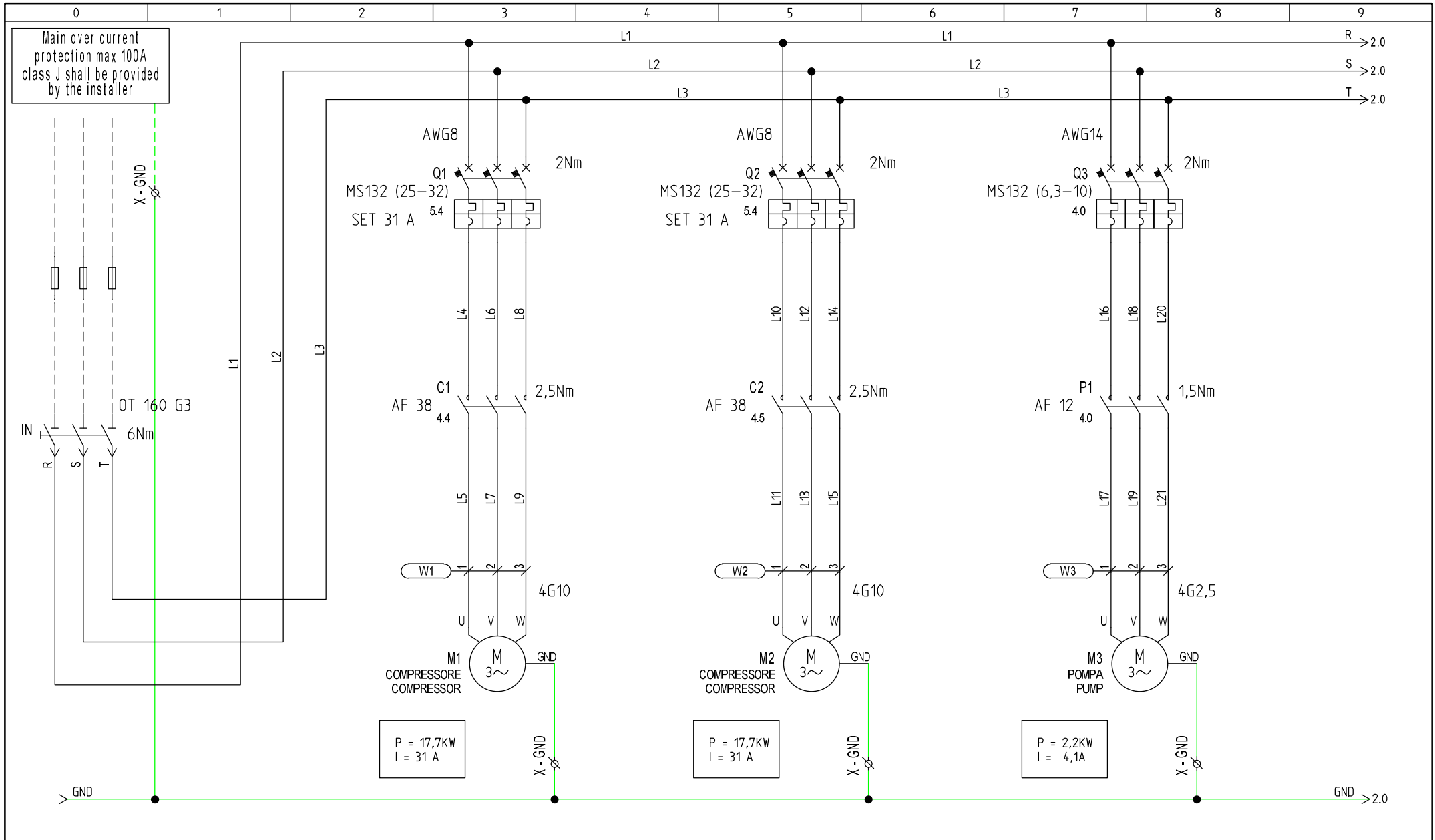
+/- 1%

MODELLO / MODEL	POTENZA MAX. MAX. POWER	CORRENTE MAX. MAX. CURRENT	MAX. LRA LRA MAX.
	KW	A	A
NCS 0251 US	40,8	71,8	190,8

MODELLO / MODEL	COMPRESSORE / COMPRESSOR				POMPA / PUMP			VENTILATORE / FAN		
	POTENZA MAX. MAX. POWER	CORRENTE MAX. MAX. CURRENT	MAX. LRA LRA MAX.	MAGNETOTERMICO MAIN SWITCH	POTENZA MAX. MAX. POWER	CORRENTE MAX. MAX. CURRENT	MAGNETOTERMICO MAIN SWITCH	POTENZA MAX. MAX. POWER	CORRENTE MAX. MAX. CURRENT	MAGNETOTERMICO MAIN SWITCH
	N° X KW	N° X A	N° X A	N° X A	N° X KW	N° X A	N° X A	N° X KW	N° X A	N° X A
NCS 0251 US	2 X 17,7	2 X 31	2 X 150	2 X 3X32A	1 X 2,2	1 X 4,1	3 X 10	2 X 1.62	2 X 2.85	3 X 30

This drawing is a property of nano-purification solutions and we reserve the copyright to all our designs which cannot be reproduced, transmitted, disclosed to third parties or utilized in any form without first obtaining our written consent. Contravention will be prosecuted. This drawing is subject to modification time to time to suit construction purpose.

Rev.	Descrizione revisione / Revision description	Data / Date	Dis./Draft.	Verificato / Checked	Approvato / Approved



REV	Modification	
11/12/2018	Drafter MU	Approved AC

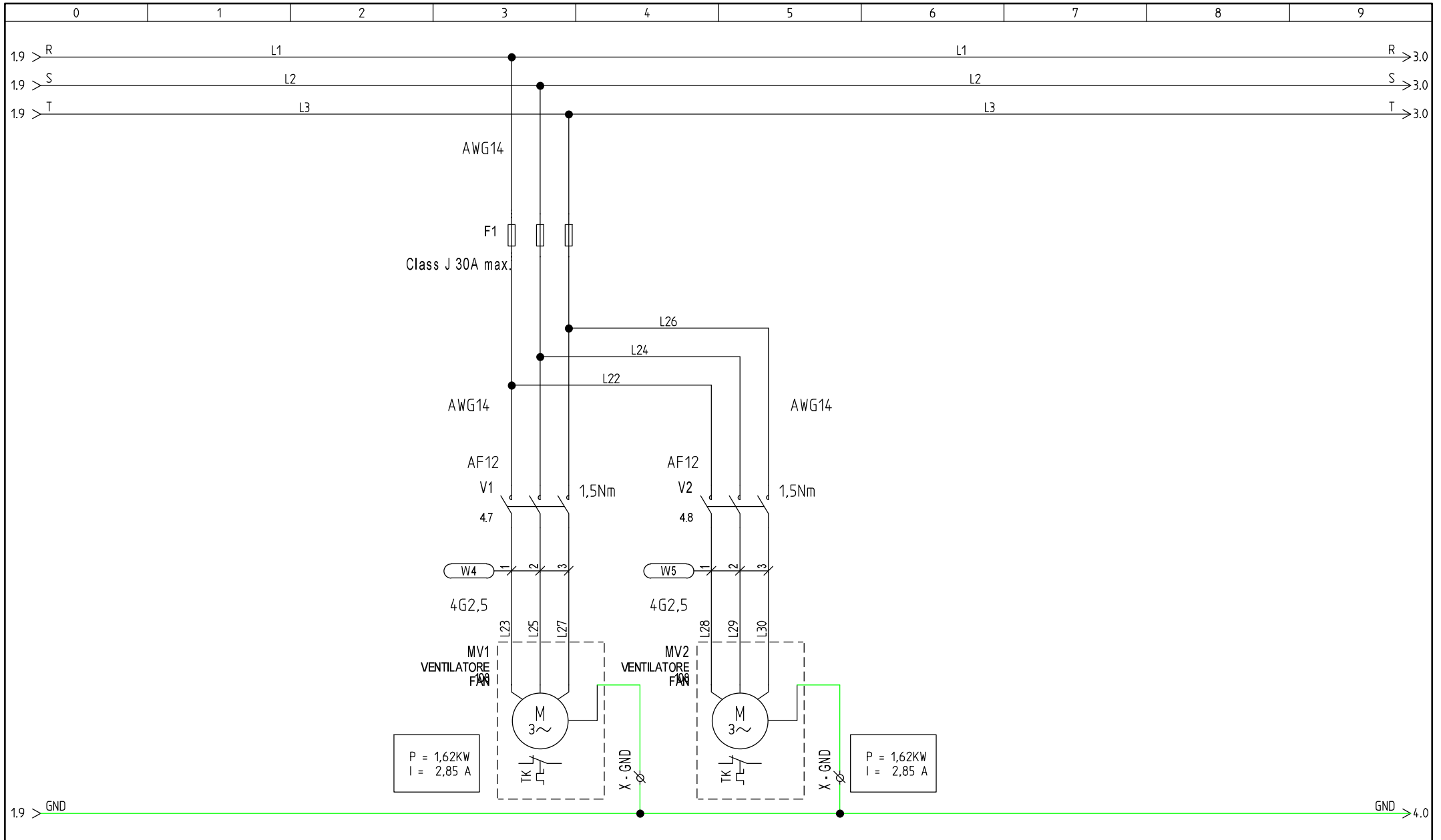
Model: **NCS 0251 US**

Drawing no.: **85504190UL01-A**

This drawing is a property of nano-purification solutions and we reserve the copyright to all our designs which cannot be reproduced, transmitted, disclosed to third parties or utilized in any form without first obtaining our written consent. Contravention will be prosecuted. This drawing is subject to modification time to time to suit construction purpose.

File name: **85504190UL01-A**

DRAFT.: DATE: **11/12/2018**

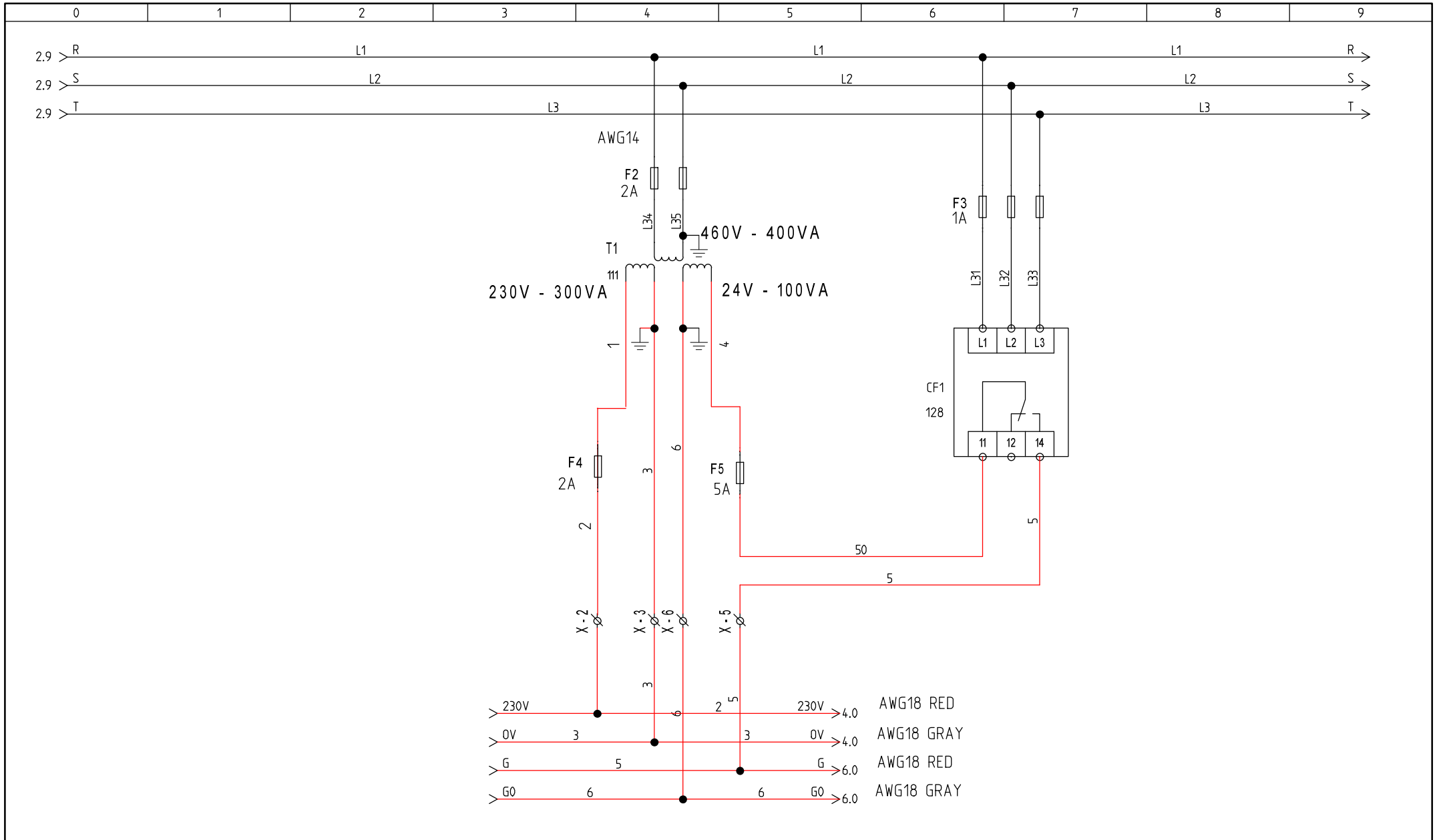


REV	Modification	
11/12/2018	Drafter MU	Approved AC

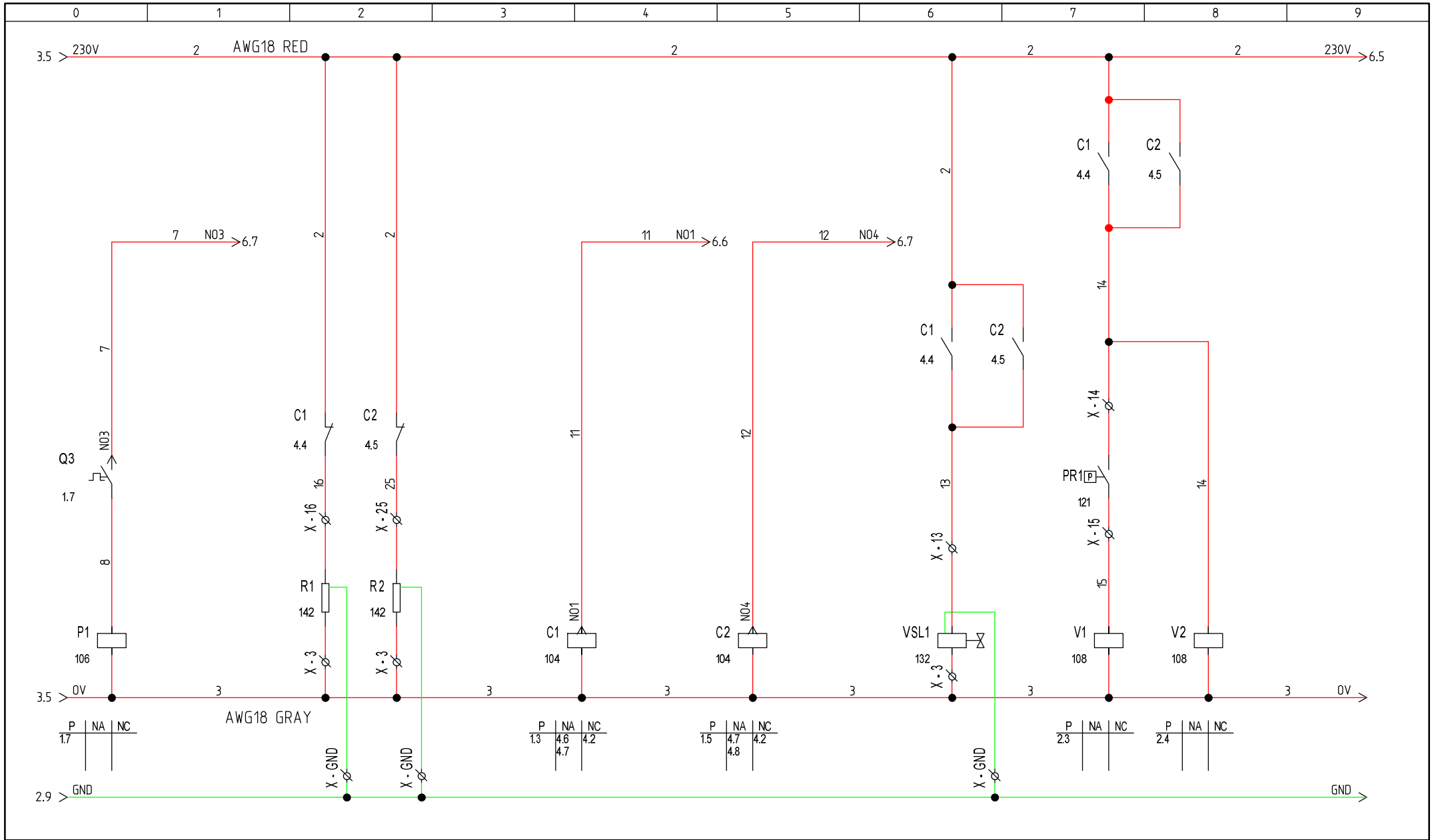
Model:	NCS 0251 US
Drawing no.:	85504190UL01-A

This drawing is a property of nano-purification solutions and we reserve the copyright to all our designs which cannot be reproduced, transmitted, disclosed to third parties or utilized in any form without first obtaining our written consent. Contravention will be prosecuted. This drawing is subject to modification time to time to suit construction purpose.	
File name:	85504190UL01-A
DRAFT.:	DATE: 11/12/2018

SHEET	2
OF	6
1	1 2 3



REV	Modification	Model: NCS 0251 US	This drawing is a property of nano-purification solutions and we reserve the copyright to all our designs which cannot be reproduced, transmitted, disclosed to third parties or utilized in any form without first obtaining our written consent. Contravention will be prosecuted. This drawing is subject to modification time to time to suit construction purpose.	SHEET 3
11/12/2018	Drafter MU Approved AC	Drawing no.: 85504190UL01-A		OF 6
			File name: 85504190UL01-A	2 ◀▶ 4
			DRAFT.: DATE: 11/12/2018	



REV	Modification	
11/12/2018	Drafter MU	Approved AC

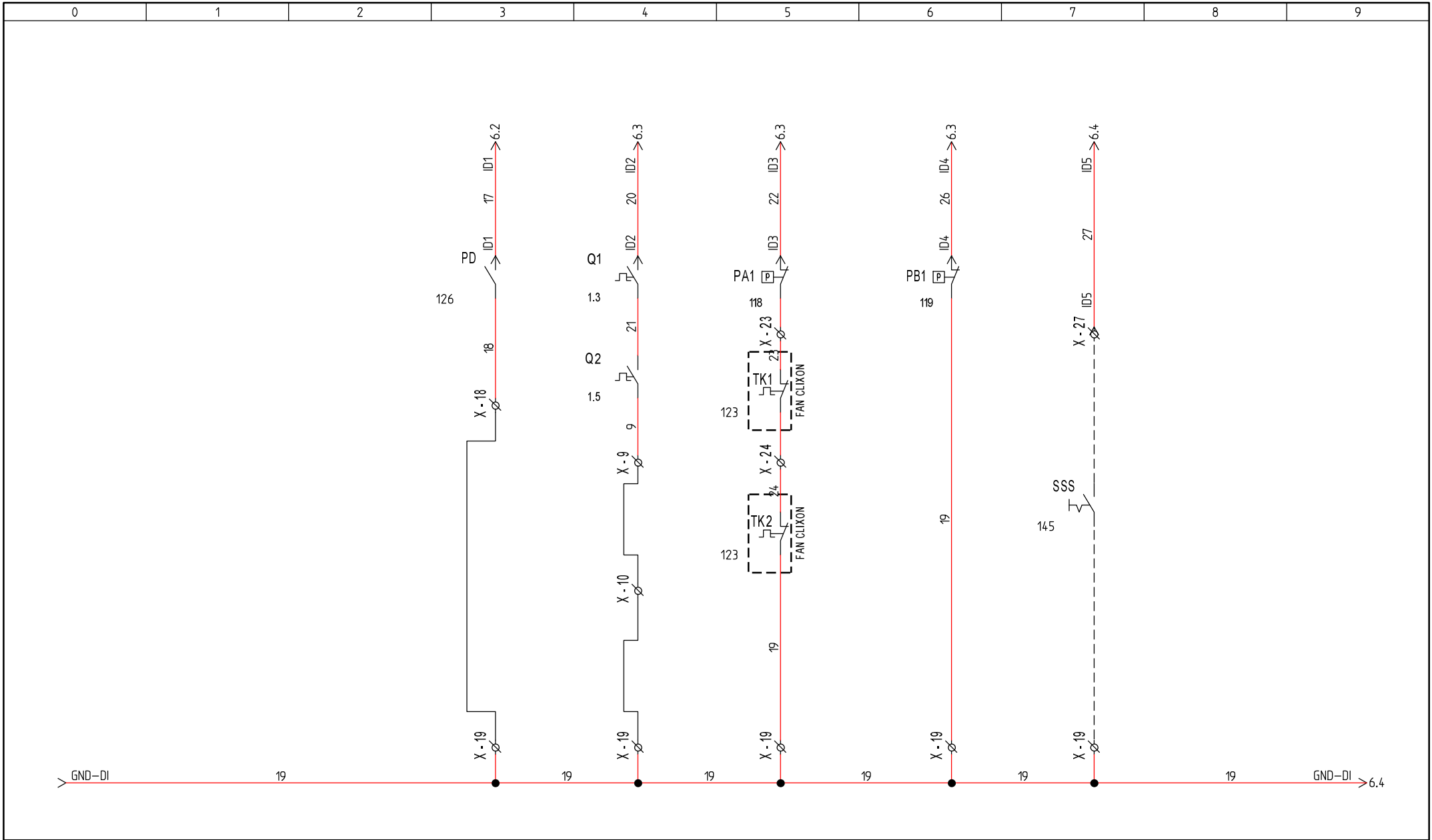
Model: **NCS 0251 US**

Drawing no.: **85504190UL01-A**

This drawing is a property of nano-purification solutions and we reserve the copyright to all our designs which cannot be reproduced, transmitted, disclosed to third parties or utilized in any form without first obtaining our written consent. Contravention will be prosecuted. This drawing is subject to modification time to time to suit construction purpose.

File name: **85504190UL01-A**

DRAFT.: DATE: **11/12/2018**

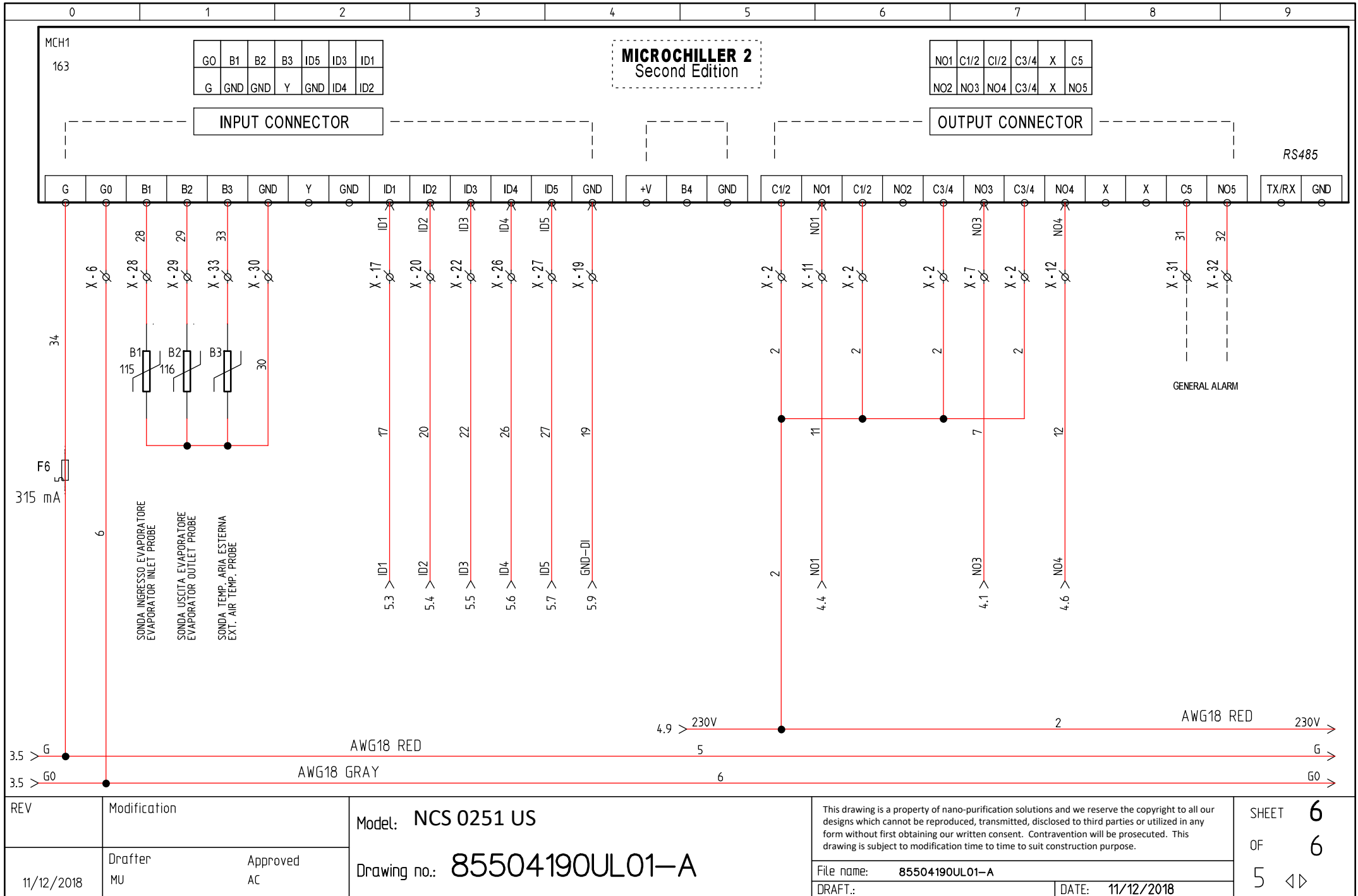


REV	Modification
11/12/2018	Drafter MU Approved AC

Model: **NCS 0251 US**
 Drawing no.: **85504190UL01-A**

This drawing is a property of nano-purification solutions and we reserve the copyright to all our designs which cannot be reproduced, transmitted, disclosed to third parties or utilized in any form without first obtaining our written consent. Contravention will be prosecuted. This drawing is subject to modification time to time to suit construction purpose.

File name: **85504190UL01-A**
 DRAFT.: _____ DATE: **11/12/2018**



REV	Modification	
11/12/2018	Drafter MU	Approved AC

Model: **NCS 0251 US**

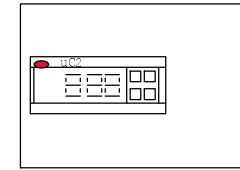
Drawing no.: **85504190UL01-A**

This drawing is a property of nano-purification solutions and we reserve the copyright to all our designs which cannot be reproduced, transmitted, disclosed to third parties or utilized in any form without first obtaining our written consent. Contravention will be prosecuted. This drawing is subject to modification time to time to suit construction purpose.

File name: **85504190UL01-A**

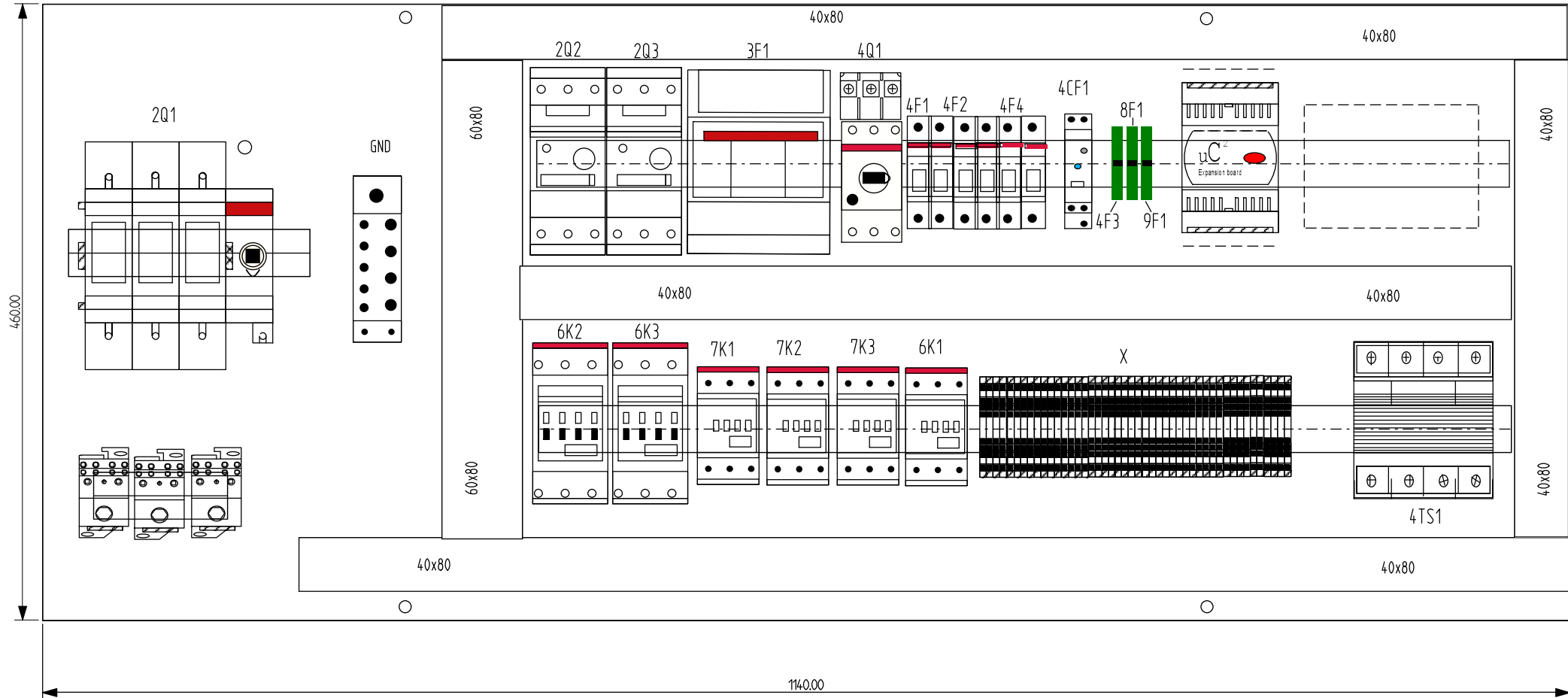
DRAFT.: DATE: **11/12/2018**

VERIFICARE CON CARLO NOMENCLATURA COMPONENTI



9ESP1

8MCH1



REV A	Modification
30/05/2019	Drafter MU
	Approved MG

Model: **NCS 0251 US**

Drawing no.: 85504190UL01-A

This drawing is a property of nano-purification solutions and we reserve the copyright to all our designs which cannot be reproduced, transmitted, disclosed to third parties or utilized in any form without first obtaining our written consent. Contravention will be prosecuted. This drawing is subject to modification time to time to suit construction purpose.

File name: 85504190UL01-A

DRAFT.: DATE: 11/12/2018

SHEET	2
OF	1
◀▶	

Components list

Item (-)	Description	Type	Constructor	Sheet	Column
IN	SEZIONATORE GENERALE / GENERAL MAIN SWITCH	OT 160 G3	ABB	1	0
Q1	MAGNETOTERMICO COMPRESS. / COMPRESSOR MAIN SWITCH	MS 132 - 32	ABB	1	3
M1	MOTORE COMPRESSORE / COMPRESSOR MOTOR			1	3
M2	MOTORE COMPRESSORE / COMPRESSOR MOTOR			1	5
Q2	MAGNETOTERMICO COMPRESS. / COMPRESSOR MAIN SWITCH	MS 132 - 32	ABB	1	5
Q3	MAGNETOTERMICO POMPA / PUMP MAIN SWITCH	MS 132 -10	ABB	1	7
M3	MOTORE POMPA / PUMP MOTOR			1	7
MV1	MOTORE VENTILATORE / FAN MOTOR			2	3
F1	FUSIBILI VENTILATORE / FAN FUSES	E93 / 30J - ABB + J30A BUSMAN		2	3
MV2	MOTORE VENTILATORE / FAN MOTOR			2	4
T1	TRASFORMATORE SERVIZI AUSILIARI / AUX. TRANSFORMER	400 VA cod.OCM040070S309 -	ITALWEBER	3	4
F2	FUSIBILI TRASF. / TRANSFORMER FUSES	PMX - CC + CCMR 2A	WIMEX	3	4
F4	FUSIBILI TRASF. / TRANSFORMER FUSES	PMX - CC + CCMR 2A	WIMEX	3	4
F5	FUSIBILE TRASF. / TRANSFORMER FUSE	SFR.4.G12 + S506 - 5A	CABUR + BUSMAN	3	5
F3	FUSIBILI RELE'. SEQ. FASI / SEQUENCE PHASE FUSES	PMX - CC + CCMR 1A	WIMEX		
CF1	RELE' SEQUENZA FASI / PHASE SEQUENCE RELAY	70.618.400.0000	FINDER	3	6
F6	FUSIBILI MICROCHILLER 2 / MICROCHILLER 2 FUSES	SFR.4.GR + S 506 - 315mA	CABUR+BUSMAN		
P1	CONTATTORE POMPA / PUMP CONTACTOR	AF 12 - 30 - 10 - 13	ABB	4	0
R1	RESISTENZA CARTER / CRANKASE OIL HEATHER			4	2
R2	RESISTENZA CARTER / CRANKASE OIL HEATHER			4	2
C1	CONTATTORE COMPRESSORE / COMPRESSOR CONTACTOR	AF 38 - 30 - 00 - 13	ABB	4	4
C2	CONTATTORE COMPRESSORE / COMPRESSOR CONTACTOR	AF 38 - 30 - 00 - 13	ABB	4	5
VSL1	VALVOLA SOLENOIDE / SOLENOID VALVE			4	6
V1	CONTATTORA VENTILATORE / FAN CONTACTOR	AF 12 - 30 - 10 - 13	ABB	4	7
PR1	PRESSOSTATO ON-OFF COND. / ON-OFF PRESSURE SWITCH			4	7
V2	CONTATTORA VENTILATORE / FAN CONTACTOR	AF 12 - 30 - 10 - 13	ABB	4	8
PD	PRESSOSTATO DIFFERENZIALE / DIFF. PRESSURE SWITCH			5	3
Q1	MAGNETOTERMICO COMPRESS. / COMPRESSOR MAIN SWITCH			5	4
Q2	MAGNETOTERMICO TRASF. / TRANSFORMER MAIN SWITCH			5	4
TK1	TERMICO VENTILATORE / FAN TERNAL SWITCH			5	5

REVISIONE	MODIFICA	85504190UL01-A	PROGETTO: 85504190UL01-A	FOGLIO	1	
			COMMESSA: NCS 0251 US	DI	2	
			CLIENTE:			
			TITOLO:			
DATA	FIRMA		DIS.:	DATA: 11/12/2018	◀▶ 2	
11/12/2018						

Description	Cable type	Cable name	Column	1
			Sheet	1
			3	1
			6	1
			8	1
			4	2
			5	2
			6	4
			4	3
			5	6
			6	6
			6	7
			4	3
			4	2
			4	2
			4	6
			3	5
			6	0
			3	4
			6	0
			6	7
			5	4
			5	4
			6	6
			6	7
			4	6
			4	7
			4	7
			4	2
			6	2
			5	3
			5	3
			5	4
			5	5
			5	6
			5	7
			6	4
			6	3
			6	3
			5	5
			5	5
			4	2
			6	3
			5	7
			6	4
			6	1
			6	1
			6	1
			6	8
			6	9
			6	1

Morsettiera
Terminals Layout

X

Destination	Term.	N°	Wire n°	Origin
	⊕	PE	PE	M1:PE
	⊕	PE	PE	M2:PE
	⊕	PE	PE	M3:PE
	⊕	PE	PE	MV1:PE
	⊕	PE	PE	MV2:PE
	⊕	PE	PE	VSL1:A1
	○	2	2	G6:2
C1:1	○	2	2	MCH1:C1/2
C1:1	⊕	2	2	MCH1:C1/2
C1:1	⊕	2	2	MCH1:C3/4
	⊕	2	2	MCH1:C3/4
P1:A2	○	3	3	T1:4
P1:A2	⊕	3	3	R1:2
C1:A2	⊕	3	3	R2:2
C2:A2	○	3	3	
V1:A2	○	3	3	VSL1:A2
	⊕	5	5	CF1:14
	⊕	5	5	MCH1:6
	⊕	6	6	T1:5
Q3:1	⊕	6	6	MCH1:60
	○	7	7	MCH1:N03
	○	9	9	G2:2
	○	10	10	
C1:A1	○	11	11	MCH1:N01
C2:A1	○	12	12	MCH1:N04
VSL1:A1	○	13	13	C1:2
	○	13	13	C2:2
PR1:NA	○	14	14	C1:2
	○	14	14	C2:2
	○	14	14	V2:A1
V1:A1	○	15	15	PR1:COM
R1:1	○	16	16	C1:2
PD:1	○	17	17	MCH1:D1
	○	18	18	PD:2
	⊕	19	19	
	⊕	19	19	TK2:2
	⊕	19	19	PB1:NC
	⊕	19	19	
	⊕	19	19	MCH1:GND
Q1:1	○	20	20	MCH1:ID2
PA1:COM	○	22	22	MCH1:ID3
TK1:1	○	23	23	PA1:NC
TK2:1	○	24	24	TK1:2
R2:1	○	25	25	C2:2
PB1:COM	○	26	26	MCH1:ID4
	⊕	27	27	
B1:1	⊕	27	27	MCH1:ID5
B2:1	○	28	28	MCH1:B1
B3:2	○	29	29	MCH1:B2
	○	30	30	MCH1:GND
	○	31	31	MCH1:C5
	○	32	32	MCH1:N05
B3:1	○	33	33	MCH1:B3

Description	Cable type	Cable name	----- Cable -----
REVISIONE / REVISION	Modifica / Modification	85504190UL01-A	
DATA / DATE 11/12/2018	Firma / Signature		
Project: 8550419 UL01-A		SHEET 1	
Unit model: NCS 0251 US		OF 1	
X		◀▶	
DIS:		DATE: 11/12/2018	