

CONFIDENTIAL:

This document is our property and shall not without our permission be altered, copied, used for manufacturing or communicated to any other person or company.

FILENAME	SHEET	DESCRIPTION
9828530101-01-01	01	INDEX
9828530101-01-05	02	POWER CIRCUIT
9828530101-01-21	03	CONTROL CIRCUIT-1
9828530101-01-41	04	REGULATOR VISION TOUCH
9828530101-01-42	05	EXPANSION MODULE I02
9828530101-01-43	06	EXPANSION MODULE I034
9828530101-01-44	07	CONNECTIONS 3X33
9828530101-01-45	08	CONNECTIONS 4X29
9828530101-01-46	09	I034 CONNECTIONS
9828530101-01-47	10	I034 CONNECTIONS
9828530101-01-48	11	CONNECTOR 4X35
9828530101-01-61	12	OPTIONAL CONTACTS
9828530101-01-91	13	LEGEND

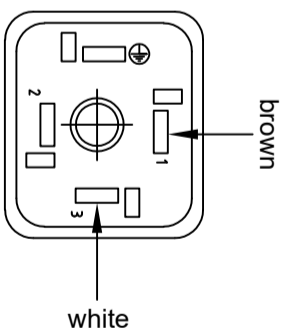
Factory options:
 1 Outlet PDP

COMPONENT	REFERENCE	TORQUE(NM)	CLASS 1 CONTROL CIRCUIT	CLASS 2 CONTROL CIRCUIT
TERMINAL	1X6 (*)	-	X	
TERMINAL	1X7 (*)	-	X	
CONNECTOR	1X10 (*)	-	X	
CONNECTOR	1X11 (*)	-	X	
CONNECTOR	2X22 (*)	-	X	
CONNECTOR	2X24 (*)	-	X	
CONNECTOR	2X27 (*)	-	X	
CONNECTOR	2X50 (*)	-	X	
CONNECTOR	3X23 (*)	-	X	
CONNECTOR	3X24 (*)	-	X	
CONNECTOR	3X32 (*)	-	X	
CONNECTOR	3X33 (*)	-	X	
CONNECTOR	3X35 (*)	-	X	
CONNECTOR	3X40 (*)	-	X	
CONNECTOR	3X41 (*)	-	X	
CONNECTOR	4X23 (*)	-	X	
CONNECTOR	4X29 (*)	-	X	
CONNECTOR	4X33 (*)	-	X	
CONNECTOR	4X35 (*)	-	X	

(*)-24V is used

NOTES :

[A] Connection PDP sensor pin configuration

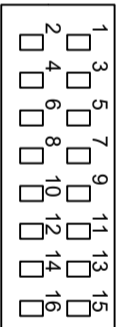


1 : Signal
3 : Supply voltage

[B] Connect filter contact to these connections. Bridge to be removed if component is installed

[C] Connect external Emergency stop to these connections. Bridge to be removed if component is installed

[E] Marking of connectors 2X27...4X34



[F] Maximum fuses with regard to short circuit protection of components. cable section might impose fuses of smaller value.

[G] F.P.C. field provided components 24V 22VA

[H] Fuses 2Nm (17,7 lb/inch.)

[I] Color codes wires:

- Black: Power conductor
- Light blue (only CE): Neutral conductor
- Red (only CE): 115VAC (or 230VAC)
- Violet: 24VAC
- Orange: Potential free contacts
- Yellow/Green: Earth conductor
- Dark blue + white: Extra DC voltages:
 - + = White
 - - = Dark blue: 24 or 12 VDC

[S] Field wiring: use copper wire only, minimum size AWG14 or 2,5mm²

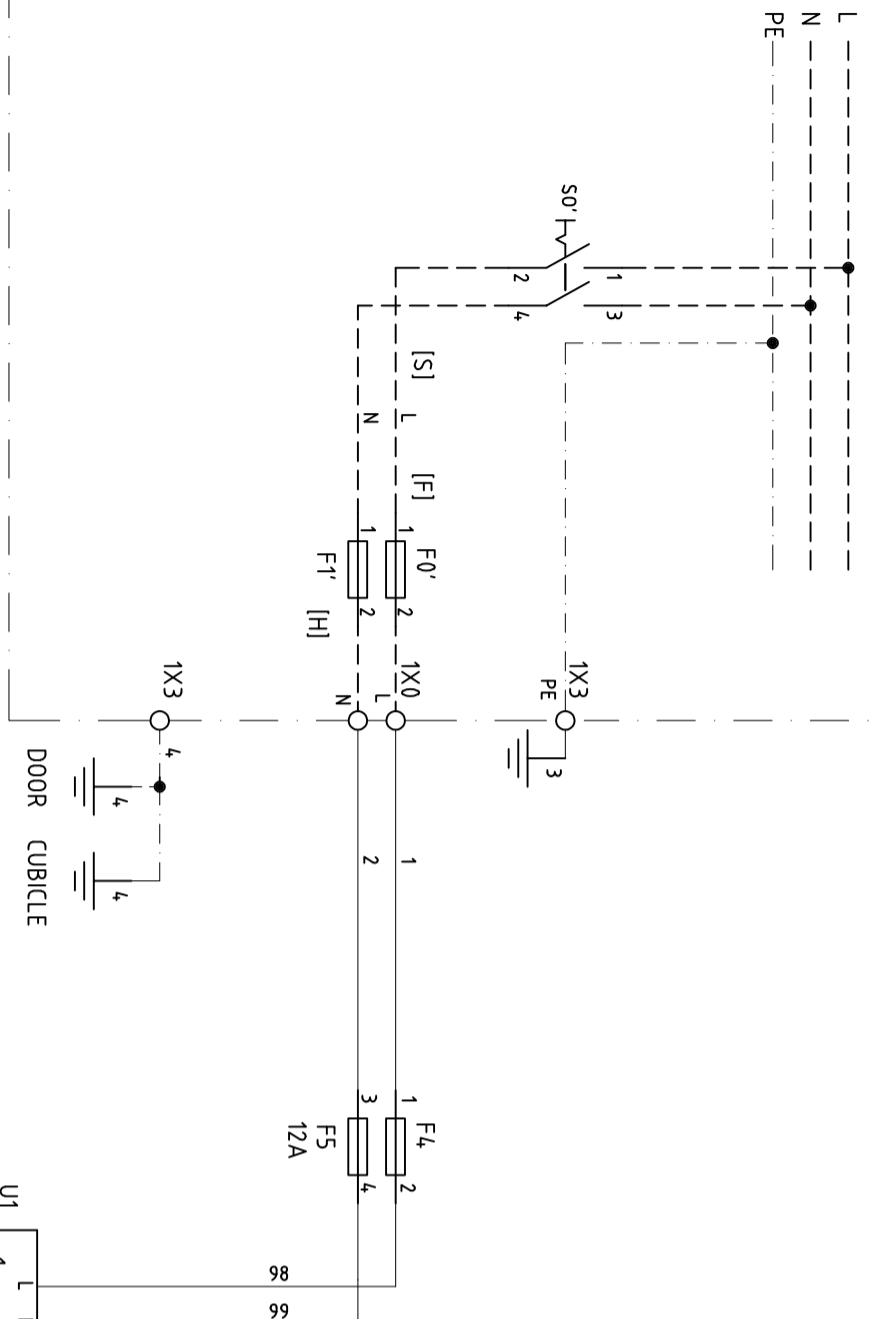
All materials supplied are in compliance with the requirements of the List of Prohibited Substances

1	Post-ition	Modified from	Date	Int./Appd.	Parent 3D Model	Ed. Version 3D
			10/17/2022	INEEXTPRAP		

Tolerances, if not indicated, according to: ATLAS COPCO STANDARD/Klasse/Class			
Name	SERVICE DIAGRAM		OGX110-1070
Material			Confidentiality Class acc. to 1102K Internal
Treatment	NOT APPLICABLE		ACD
PURIFICATION SOLUTIONS	Scale	-/-	Family
	Drawn by	INEEXTPRAP	Blank nr.
Version Drwg	01	Blank wt.	Kg
Des checked.	Prod checked.	Approved.	Date
RELEASED			6/30/2022
Designation		9828530101	Compare
Replaces			
Sheet ()		01	13
Drawing owner		API	

9828530111-01

CUSTOMER'S INSTALLATION
115V AC/230V AC



MAIN SUPPLY IEC ONLY

VOLTAGE :	230 V
FREQ. :	50HZ 1 PH

MAX FUSE [F] IEC ONLY

IEC : Class gL/gG	12	A
-------------------	----	---

MAIN SUPPLY CSA/UL ONLY

VOLTAGE :	115 V
FREQ. :	60 HZ 1 PH

MAX FUSE [F] CSA/UL ONLY

CSA : HRC Form II	12	A
UL : Class RK1	12	A

03.1,04.4,05.8,06.8,09.8,10.2,10.4,11.10
03.1,04.4,05.8,06.8,09.5,10.1,10.3,11.9



ACD
Drawing owner
API

Name
SERVICE DIAGRAM

OGX110-1070

STATUS
RELEASED

Ed.
1

Date
10/17/2022

Prev. Page
Drawn by
01
INEEXTPRAP

Next Page
Date
03
6/30/2022

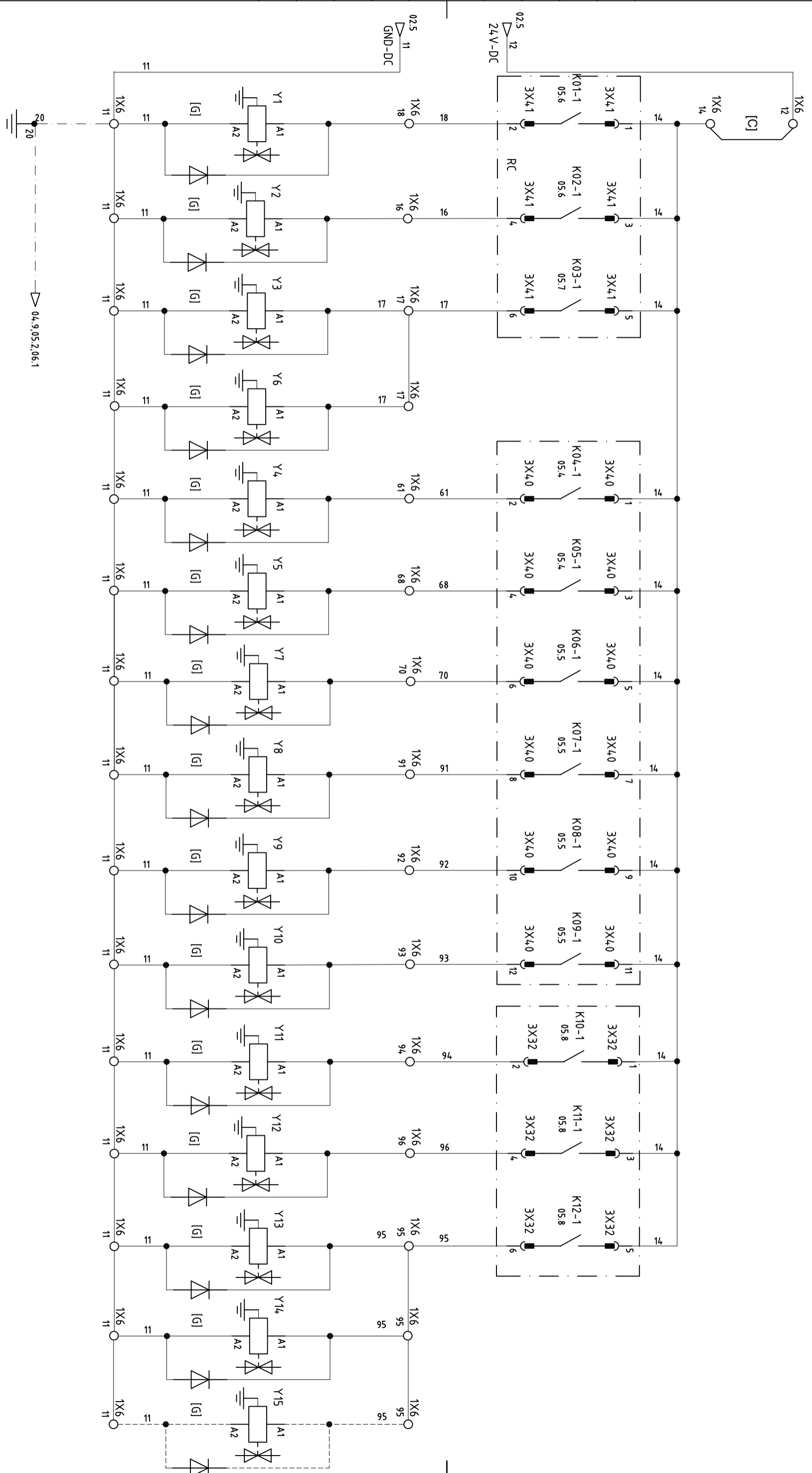
A3

Designation

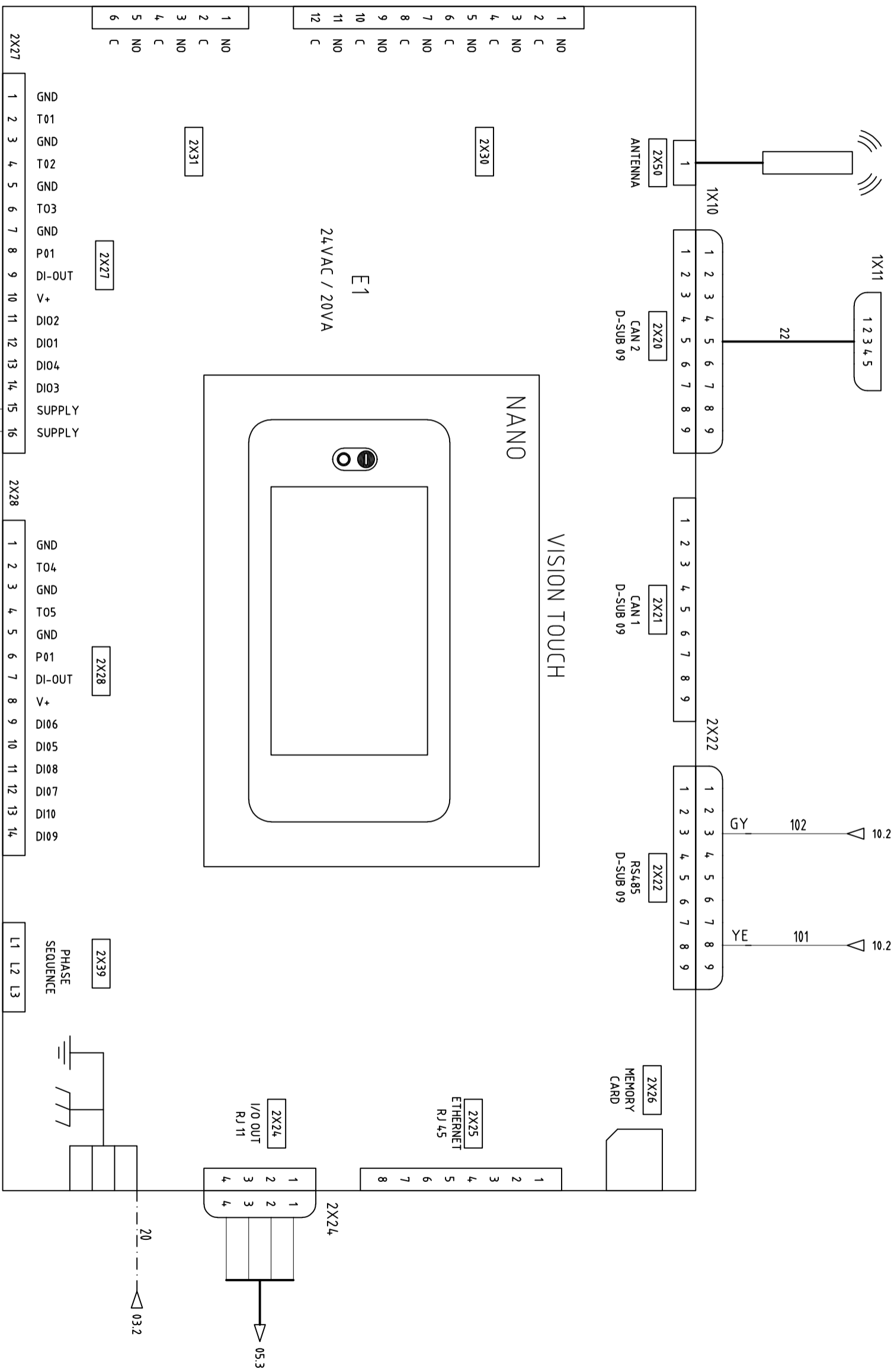
9828530111-01

Sheet 02 (13)

- INLET VALVE VESSEL A
- INLET VALVE VESSEL B
- EQUALIZATION VALVES TOP + BOTTOM
- EXHAUST VALVE VESSEL A
- EXHAUST VALVE VESSEL B
- OUTLET VALVE VESSEL A
- OUTLET VALVE VESSEL B
- MPV
- CONSUMER VALVE
- INLET FLUSHING VALVE
- OUTLET FLUSHING VALVE
- PURITY SENSOR SOLENOID
- INLET PDP SOLENOID
- OUTLET PDP SOLENOID (OPTIONAL)



	ACD	Name	SERVICE DIAGRAM		OGX110-1070	STATUS	Ed.	Date	Prev. Page	02	Next Page	04	A3	Designation	Sheet 03 (13)
	Drawing owner	API				RELEASED	1	10/17/2022	Drawn by	INEEXTPRAP	Date	6/30/2022		9828530111-01	



REGULATOR VISION TOUCH

1 2 3 4 5 6 7 8 9 10

A

B

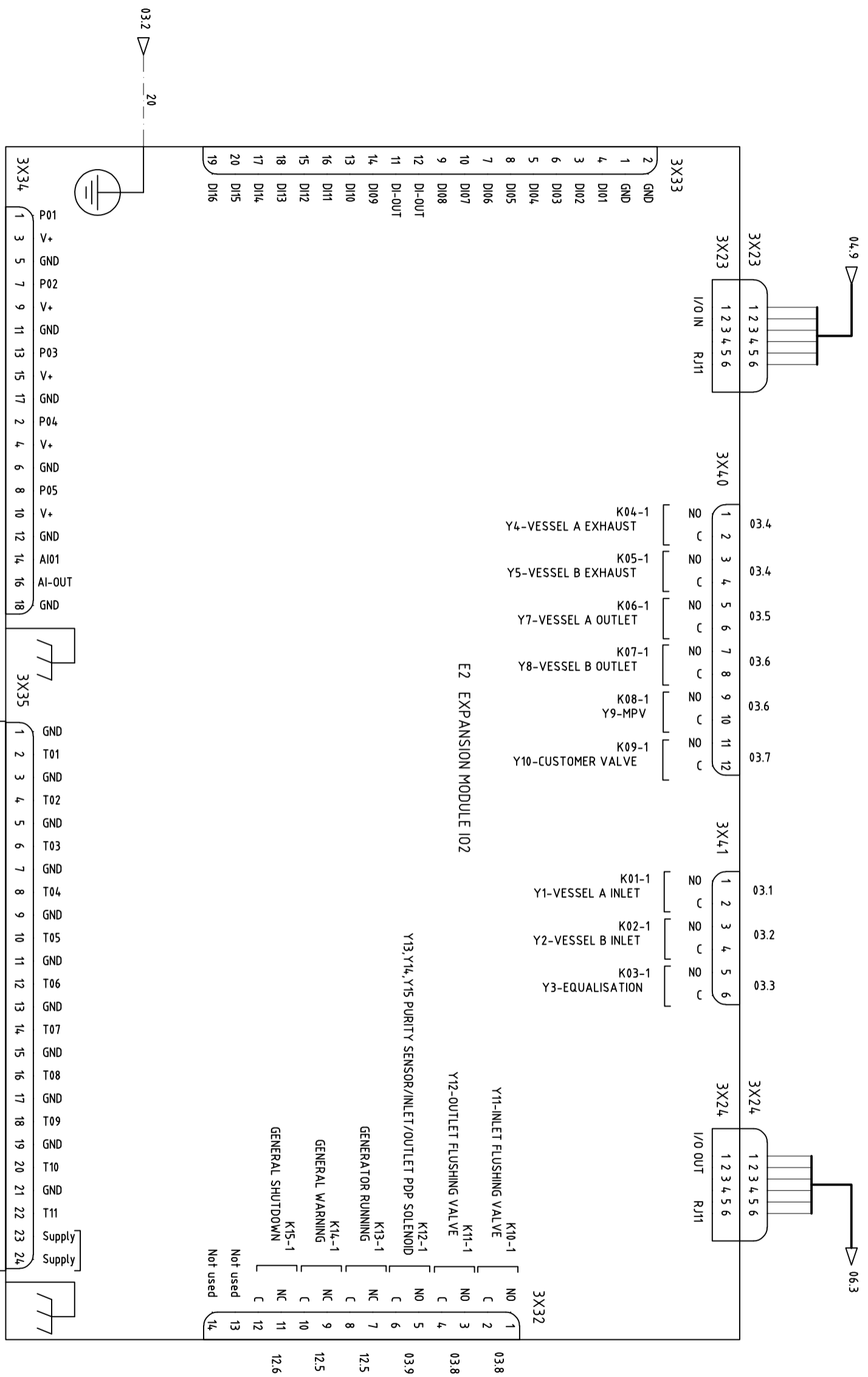
C

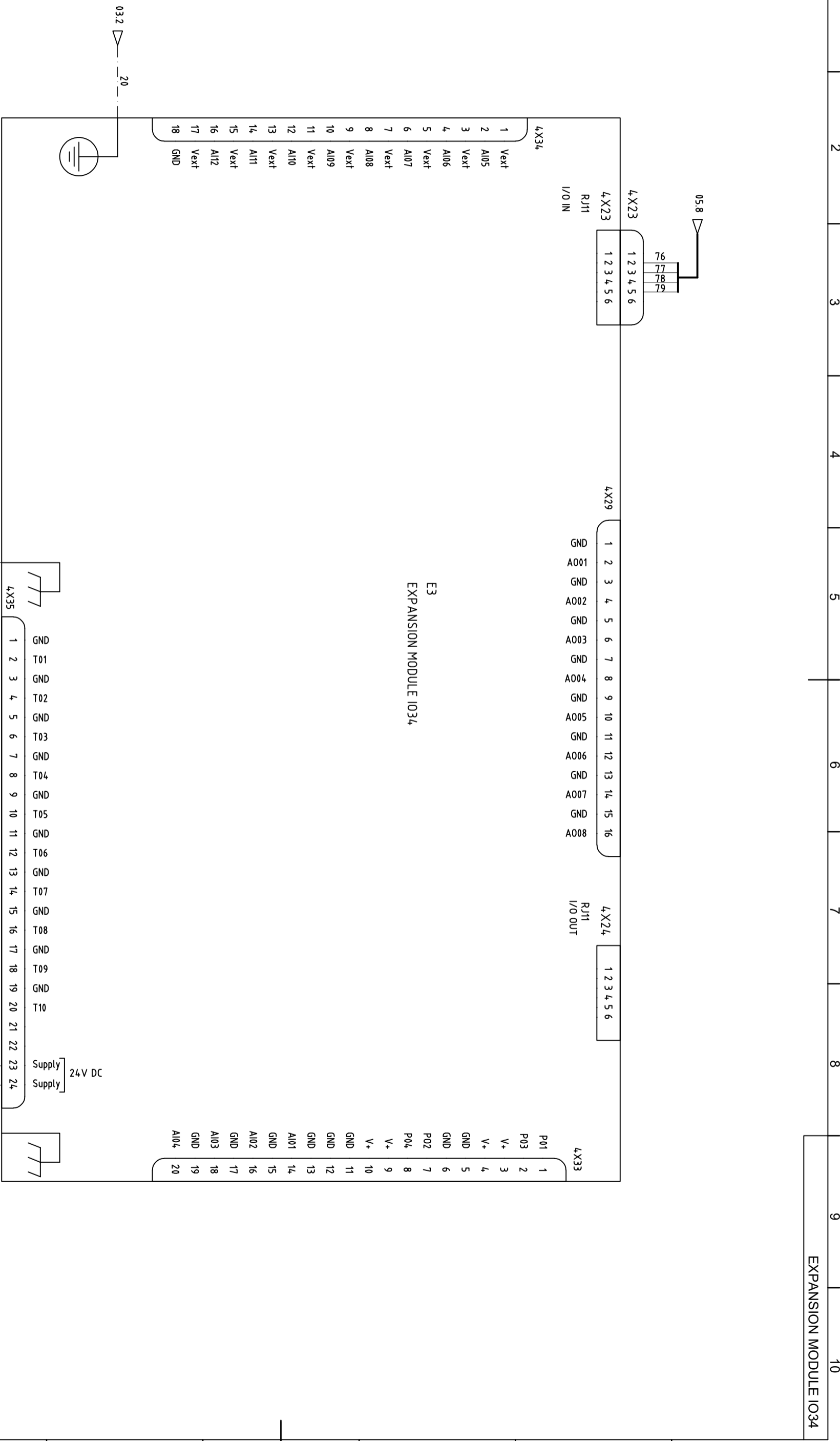
D

E

F

G

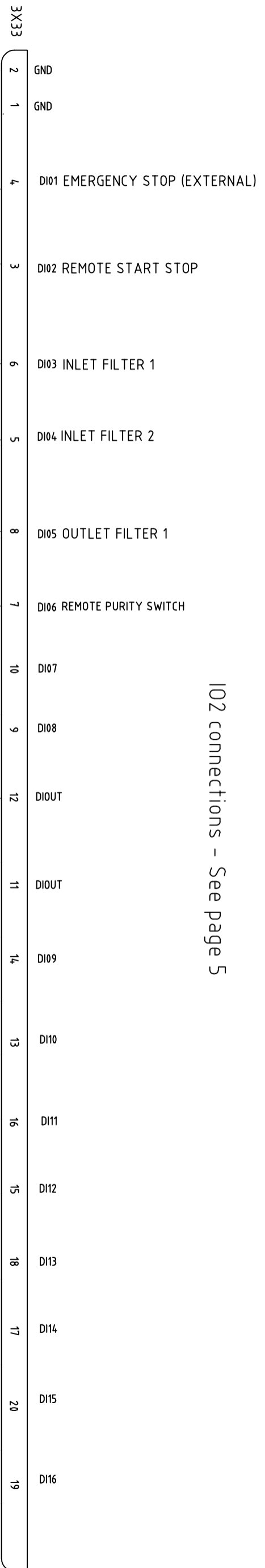
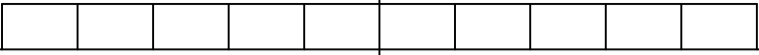




EXPANSION MODULE IO34

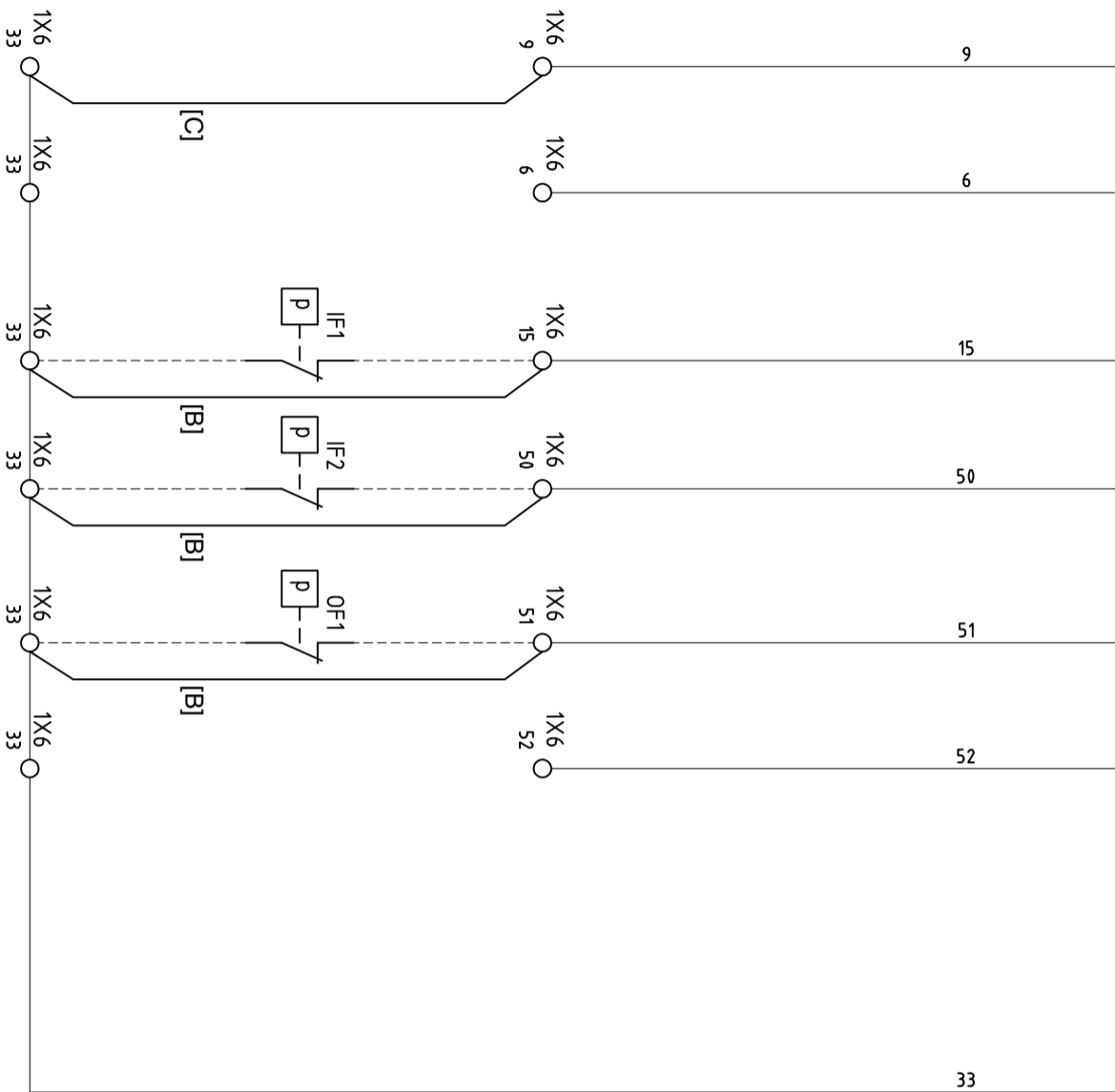
1 2 3 4 5 6 7 8 9 10

A B C D E F G



I02 connections - See page 5

CONNECTIONS 3X33



--	--	--	--	--	--	--	--	--	--



ACD
Drawing owner
API

Name

SERVICE DIAGRAM

OGX110-1070

STATUS
RELEASED

Ed. 1

Date
10/17/2022

Prev. Page 07
Drawn by INEEXTPRAP

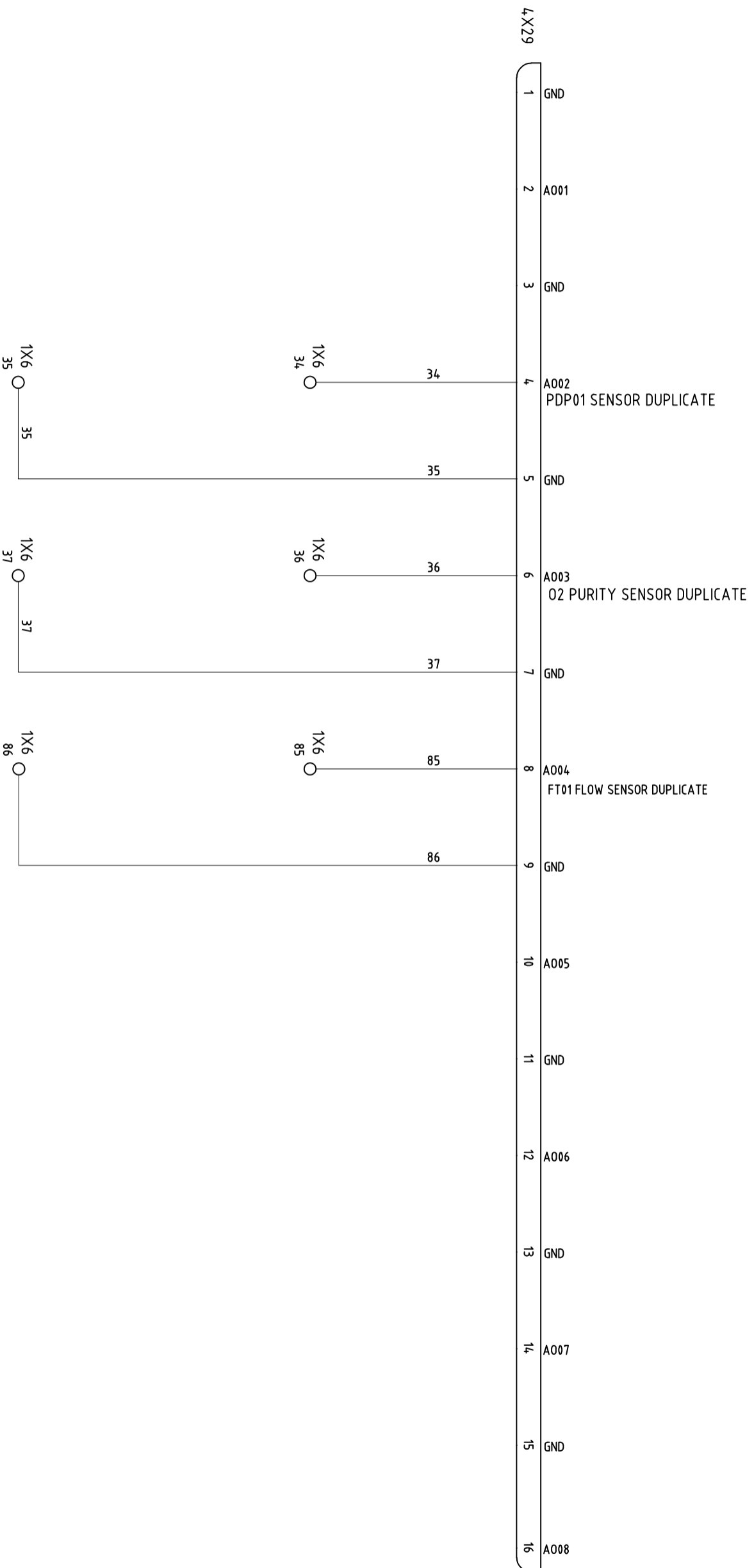
Next Page 09
Date 6/30/2022

A3

Designation
9828530111-01

Sheet 08 (13)

1034 connections - See page 6



CONNECTIONS 4X29

1 2 3 4 5 6 7 8 9 10

A

B

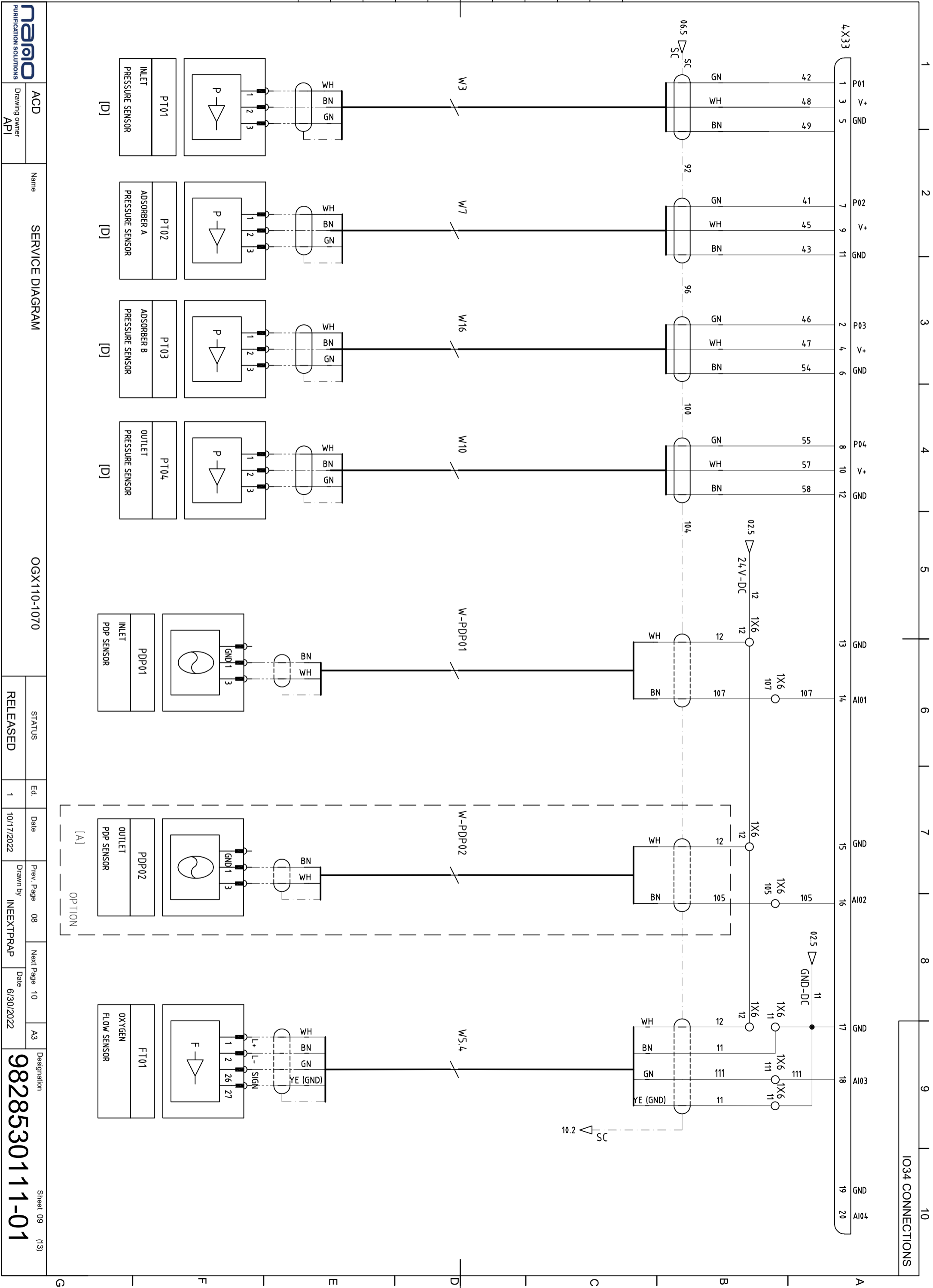
C

D

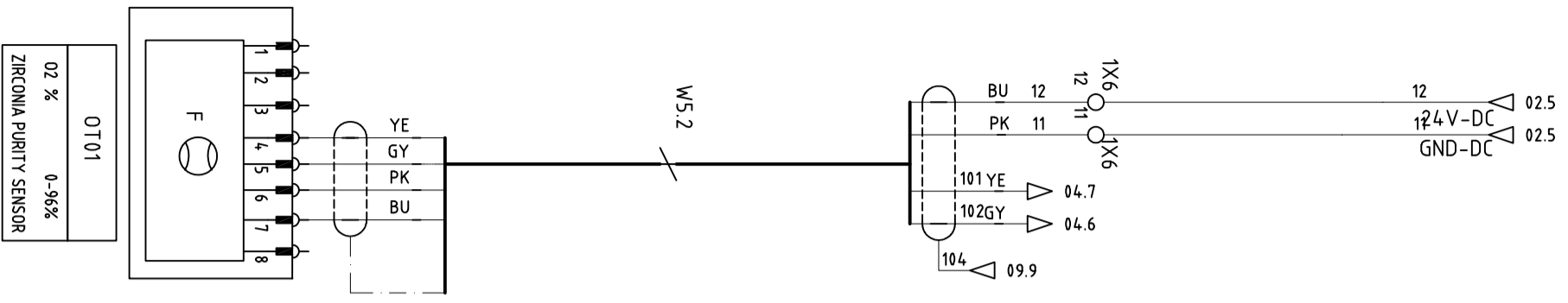
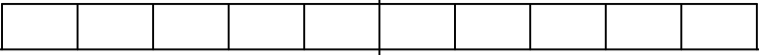
E

F

G



IO34 CONNECTIONS



OT01
02 %
0-96%
ZIRCONIA PURITY SENSOR



ACD
Drawing owner
API

Name
SERVICE DIAGRAM

OGX110-1070

STATUS
RELEASED

Ed.
1

Date
10/17/2022

Prev. Page
Drawn by
INEEXTPRAP

09

Next Page
Date
6/30/2022

11

A3

Designation

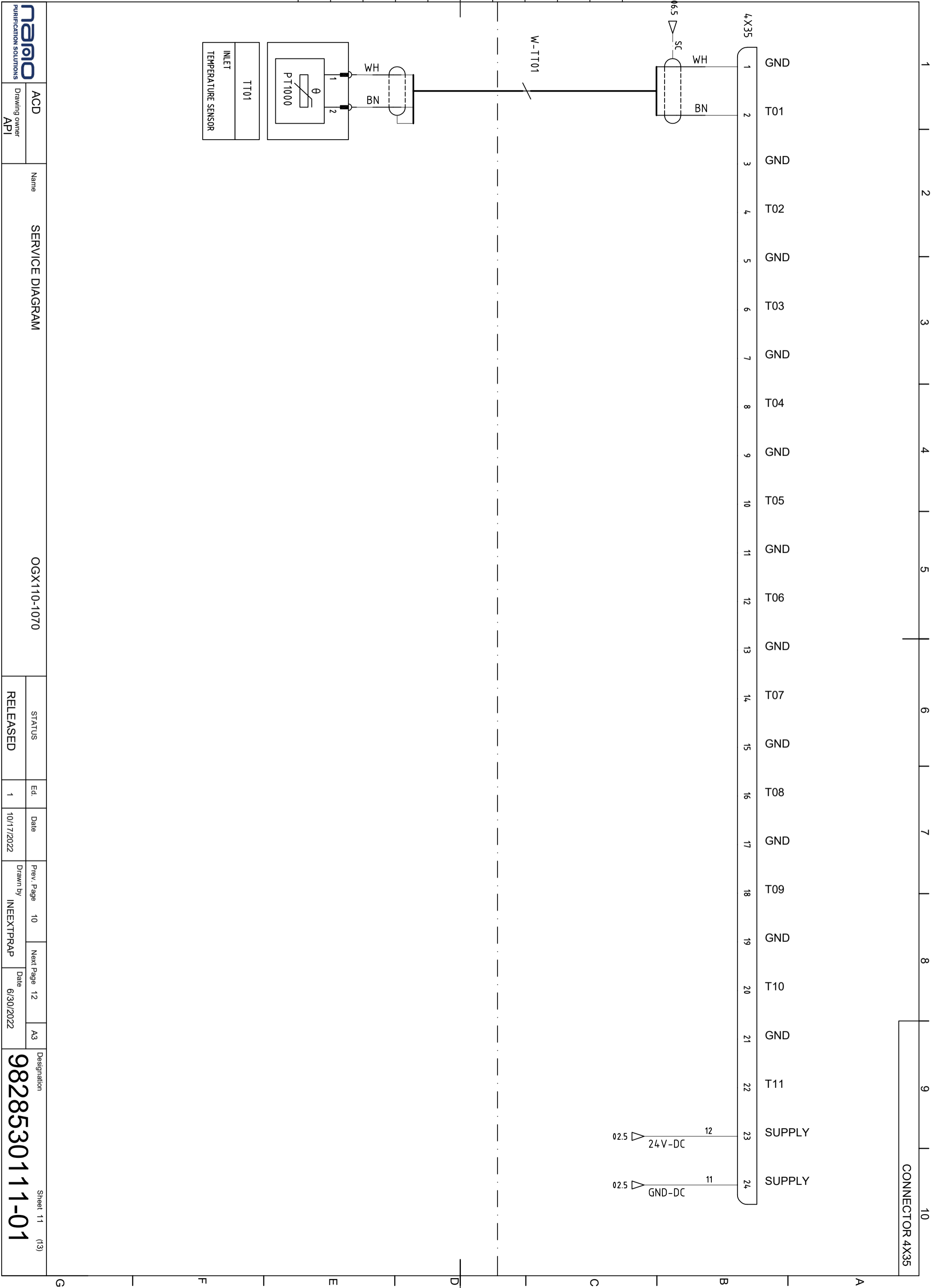
9828530111-01

Sheet 10 (13)

IO34 CONNECTIONS

1 2 3 4 5 6 7 8 9 10

A B C D E F G



nano
PURIFICATION SOLUTIONS

ACD
Drawing owner
API

Name
SERVICE DIAGRAM

OGX110-1070

STATUS
RELEASED

Ed.
1

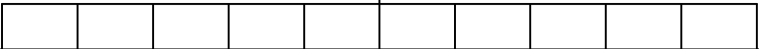
Date
10/17/2022

Prev. Page
10
Drawn by
INEEXTPRAP

Next Page
12
Date
6/30/2022

Designation
9828530111-01

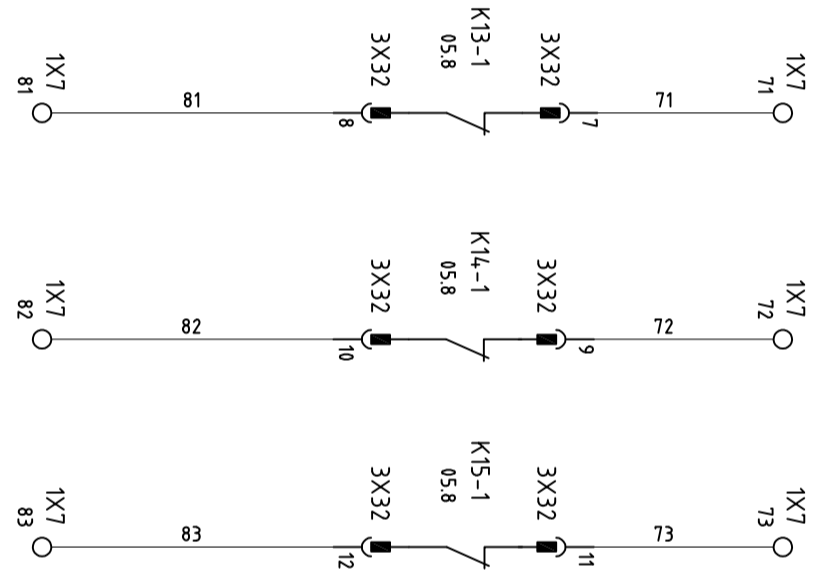
Sheet 11 (13)



1 2 3 4 5 6 7 8 9 10
OPTIONAL CONTACTS

VOLTAGE FREE CONTACTS

GENERATOR RUNNING GENERAL WARNING GENERAL SHUTDOWN



	ACD	Name	SERVICE DIAGRAM	OGX110-1070	STATUS	Ed.	Date	Prev. Page	11	Next Page	13	A3	Designation 9828530111-01
	Drawing owner API				RELEASED	1	10/17/2022	Drawn by	INEEXTPRAP	Date	6/30/2022		

G F E D C B A



ACD
Drawing owner
API

Name
SERVICE DIAGRAM

OGX110-1070

STATUS
RELEASED

Ed. 1
Date 10/17/2022

Prev. Page 12
Drawn by INEEXTPRAP

Next Page
Date 6/30/2022

A3

Designation
9828530111-01

Sheet 13 (13)

LOCATION	TAGNAME	SHEET	DESCRIPTION	FUNCTION
CONTROL PANEL	1X11	04	M12 connector	1088001744
CONTROL PANEL	4X29	08	CONNECTOR	EXPANSION MODULE 1034
CONTROL PANEL	4X33	09	CONNECTOR	EXPANSION MODULE 1034
CONTROL PANEL	E1	04	REGULATOR VISION TOUCH	
CONTROL PANEL	E3	06	EXPANSION MODULE 1034	
CONTROL PANEL	F4	02	FUSE	
CONTROL PANEL	F5	02	FUSE	
CONTROL PANEL	FT01	09	OXYGEN	FLOW SENSOR
CONTROL PANEL	IF1	07	INLET FILTER 1	PRESSURE DROP SWITCH
CONTROL PANEL	IF2	07	INLET FILTER 2	PRESSURE DROP SWITCH
CONTROL PANEL	OF1	07	OUTLET FILTER	PRESSURE DROP SWITCH
CONTROL PANEL	OT01	10	OXYGEN LEVEL TRANSMITTER	
CONTROL PANEL	PDP01	09	INLET	PDP SENSOR
CONTROL PANEL	PDP02	09	OUTLET	PDP SENSOR
CONTROL PANEL	PT01	09	INLET	PRESSURE SENSOR
CONTROL PANEL	PT02	09	ADSORBER A	PRESSURE SENSOR
CONTROL PANEL	PT03	09	ADSORBER B	PRESSURE SENSOR
CONTROL PANEL	PT04	09	OUTLET	PRESSURE SENSOR
CONTROL PANEL	4X35	11	CONNECTOR	EXPANSION MODULE 1034
CONTROL PANEL	1X10	04	CONNECTOR	CAN1
CONTROL PANEL	2X22	04	CONNECTOR	CAN1
CONTROL PANEL	2X24	04	CONNECTOR	I/O-RJ11
CONTROL PANEL	3X23	05	CONNECTOR	EXPANSION MODULE 102
CONTROL PANEL	3X24	05	CONNECTOR	EXPANSION MODULE 102
CONTROL PANEL	3X35	07	CONNECTOR	EXPANSION MODULE 102
CONTROL PANEL	3X35	05	CONNECTOR	EXPANSION MODULE 102
CONTROL PANEL	3X40	03	CONNECTOR	EXPANSION MODULE 102

LOCATION	TAGNAME	SHEET	DESCRIPTION	FUNCTION
CONTROL PANEL	3X40	03	CONNECTOR	EXPANSION MODULE 102
CONTROL PANEL	3X41	03	CONNECTOR	EXPANSION MODULE 102
CONTROL PANEL	4X23	06	CONNECTOR	EXPANSION MODULE 1034
CONTROL PANEL	E2	05	EXPANSION MODULE 102	
CONTROL PANEL	U1	02	POWER SUPPLY	24VDC / 5A
CUSTOMER	S0'	02	MAIN SWITCH	CUSTOMER INSTALLATION
CUSTOMER	F0'	02	FUSE	CUSTOMER
CUSTOMER	F1'	02	FUSE	CUSTOMER
GENERATOR	TT01	11	INLET	TEMPERATURE SENSOR
GENERATOR	Y1	03	INLET VALVE	VESSEL A
GENERATOR	Y2	03	INLET VALVE	VESSEL B
GENERATOR	Y3	03	EQUALIZATION VALVE	TOP
GENERATOR	Y4	03	EXHAUST VALVE	VESSEL A
GENERATOR	Y5	03	EXHAUST VALVE	VESSEL B
GENERATOR	Y6	03	EQUALIZATION VALVE	BOTTOM
GENERATOR	Y7	03	OUTLET VALVE	VESSEL A
GENERATOR	Y8	03	OUTLET VALVE	VESSEL B
GENERATOR	Y9	03	MPV	
GENERATOR	Y10	03	CONSUMER VALVE	
GENERATOR	Y11	03	INLET FLUSHING VALVE	
GENERATOR	Y12	03	OUTLET FLUSHING VALVE	
GENERATOR	Y13	03	PURITY SENSOR SOLENOID	
GENERATOR	Y14	03	INLET PDP SOLENOID	
GENERATOR	Y15	03	OUTLET PDP SOLENOID	