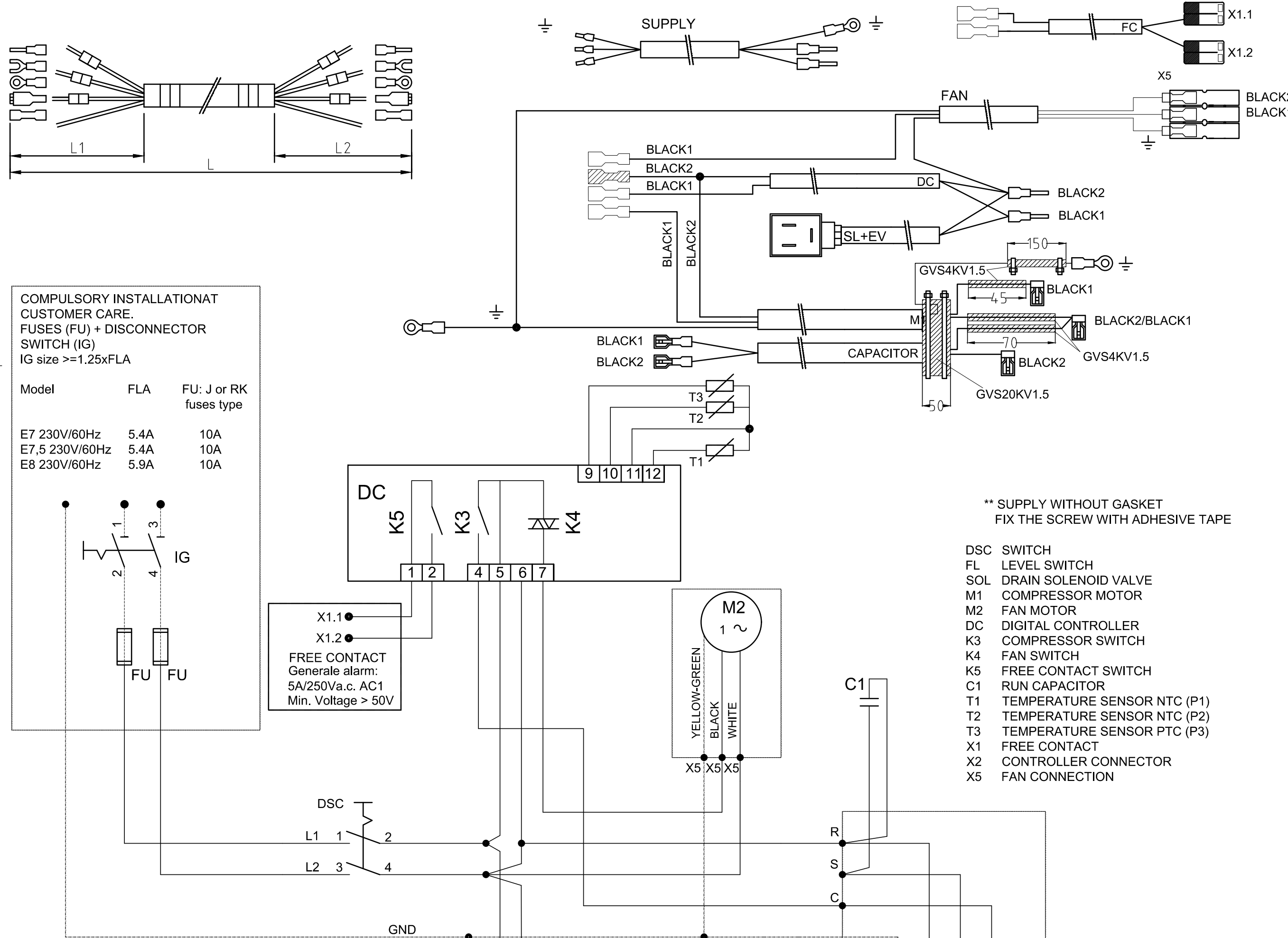


CABLE BILL OF MATERIALS

2205040711 WIRE HARNESS E7-7.5-8 230/60 UL

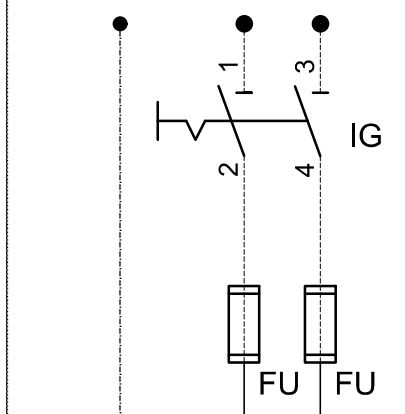
CABLE FOR	LENGTH mm	CABLE TYPE	SIDE A		SIDE B		TERMINAL TYPE	NOTES
			L1 mm	TERMINAL TYPE	L2 mm	TERMINAL TYPE		
MAIN SUPPLY	4000	AWG14 3G2.5	80	3xBF-P10	80 - 150GND	2xBF-P10 + S2,5-M6	LISTED SJ, SJT, SJTO, SJOOW, SJTOW	
SOLENOID VALVE SL+EV	850	AWG18 2x1	-	43650/B **	80	1xBF-P10 + GF-P10 (BLACK2)	style 2587 ore 2550 or 21098 or 21216 or equivalent	
DIGITAL CONTROLLER DC	450	AWG14 2x2.5	80	3 x BF-F608P + GF-F608P	80			
MOTOR M1	1000	AWG14 3G2.5	180	S6-M6(GND) + X2	100BLACK2 - 65BLACK1 300GND	2x41802 + 60851-1 + S2.5M4(GND)		
CAPACITOR	450	AWG14 2x2.5	50	2xBF-F608P	100BLACK1 - 50BLACK2			
FAN	1000	AWG14 3G2.5	180	-	70	3xBF-F608P + X5		
FREE CONTACT FC	300	AWG18 2x1	80	2 x RF-F608P	80	2 x 221-412		

ID	DESCRIPTION	TYPE	MANUFACTOR	CODE	QUANT.	POSITION
DSC	SWITCH	OT25FT3	ABB	1089949849	1	
	HANDLE	OHBSRH	ABB	1089949850	1	
	CABLE GLAND	M20X1,5		0698514121	1	LOOSE
	NUT	M20x1,5		0697980953	1	LOOSE
X4	HOUSING			0993421506	3	LOOSE
X5	CONNECTOR	PA21		2203080501	3	
	INSULATION	GVS 30KV1.5	ELEKTROZUBEHOR		94x160	LOOSE
	SERVICE DIAGR.			2205040710	1	



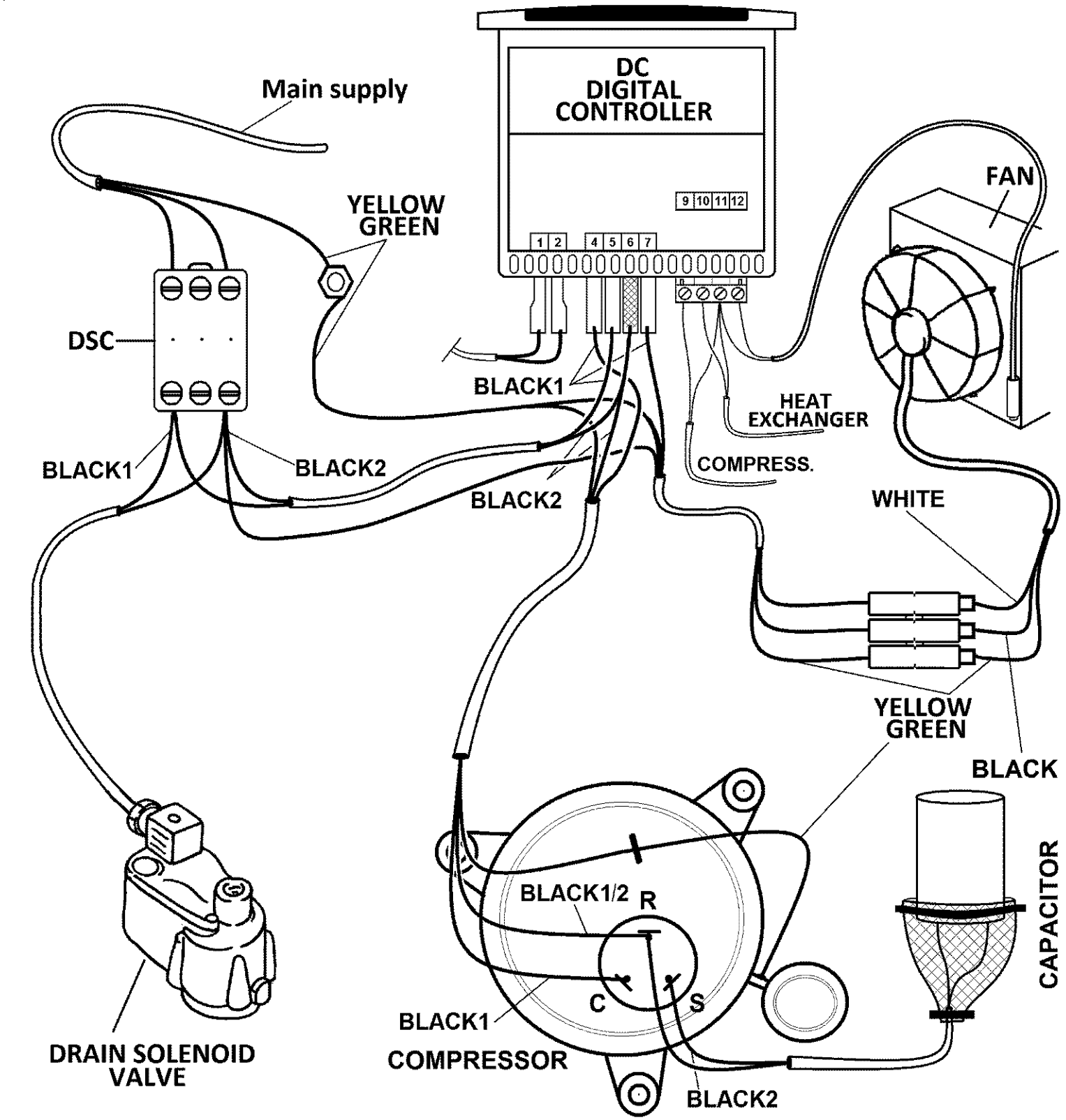
COMPULSORY INSTALLATION AT CUSTOMER CARE.
FUSES (FU) + DISCONNECTOR SWITCH (IG)
IG size >= 1.25xFLA

Model	FLA	FU: J or RK fuses type
E7 230V/60Hz	5.4A	10A
E7,5 230V/60Hz	5.4A	10A
E8 230V/60Hz	5.9A	10A



X1.1
X1.2
FREE CONTACT
Generale alarm:
5A/250Va.c. AC1
Min. Voltage > 50V

- ** SUPPLY WITHOUT GASKET
FIX THE SCREW WITH ADHESIVE TAPE
- DSC SWITCH
 - FL LEVEL SWITCH
 - SOL DRAIN SOLENOID VALVE
 - M1 COMPRESSOR MOTOR
 - M2 FAN MOTOR
 - DC DIGITAL CONTROLLER
 - K3 COMPRESSOR SWITCH
 - K4 FAN SWITCH
 - K5 FREE CONTACT SWITCH
 - C1 RUN CAPACITOR
 - T1 TEMPERATURE SENSOR NTC (P1)
 - T2 TEMPERATURE SENSOR NTC (P2)
 - T3 TEMPERATURE SENSOR PTC (P3)
 - X1 FREE CONTACT
 - X2 CONTROLLER CONNECTOR
 - X5 FAN CONNECTION



SERVICE DIAGRAM IS EQUIVALENT TO
2205040719
2205043660

Tolerances, if not indicated, according to:		General tolerances	
1350K - v			
Name: SERVICE DIAGRAM		E7-7.5-8 230V UL R410	
Material: See Drawing		Confidentiality class acc. to 1102 K	
Treatment: Not Applicable		Internal	
		ACDE	
Scale: --		Family	
Drawn by		Blank nr.	
Drawing format: 05.00		Blank wt. Kg	
Fini wt. Kg		Designation	
Status: Approved Internal		Sheet () 01 01	
Res checked.		Prod checked.	
Approved.		Date: 28/10/2016 15:20:00	
Parent 3D Model		Ed. Version 3D	
		2205040710	

CONFIDENTIAL: This document is property of Atlas Copco AB and shall not be distributed or used for manufacturing or communication to any other person or company.

Note	Position	Modified from	Date	Intr./Appd.
06		Title block updated & DN 220541 17 and CID28208	04-04-2022	