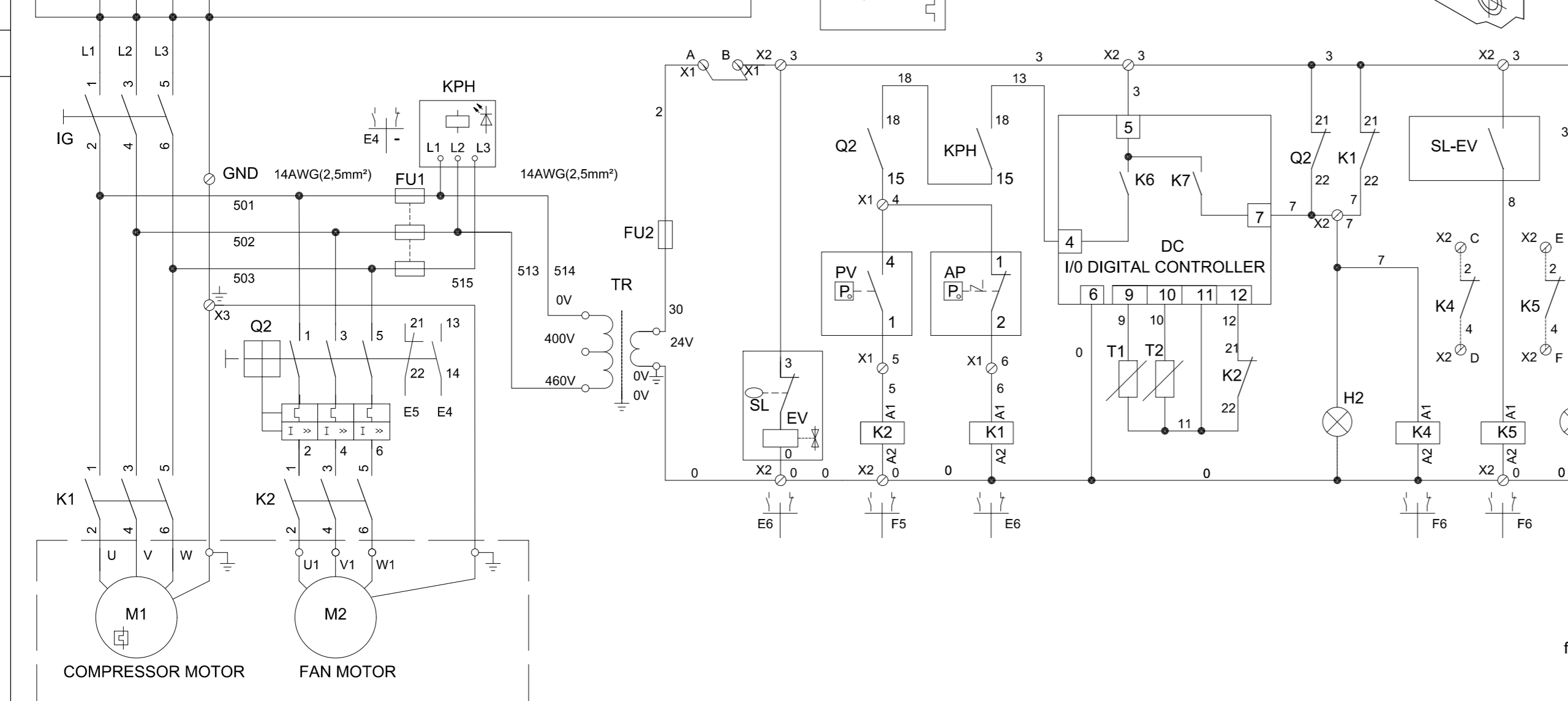
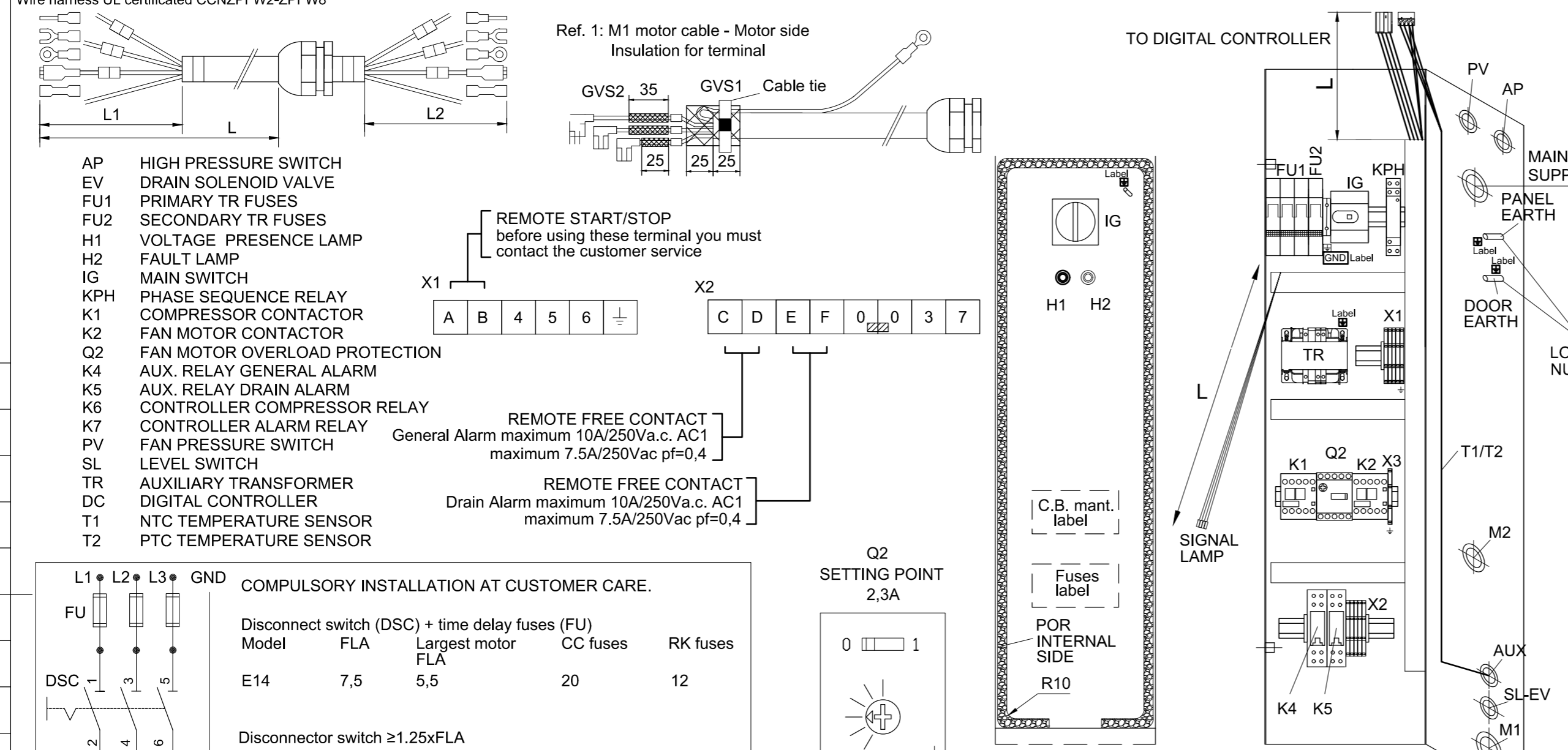


CABLE BILL OF MATERIALS	Length [mm]	Cable Type	WIRE	Side A	Terminal type	Side B	Terminal type	Notes
MAIN SUPPLY	4000	AWG14 4G2.5	L1-L2-L3-GND	80	4x BP-P10	80	4x KE2508ST	LISTED MTW 90°C ***
COMPR. MOTOR M1	2080	AWG14 4G2.5	U-V-W-GND	70 U(BK) 95 V(BN) 40 W(GR) 930 PE	3X BN-FAB608 1x S2,5-M4	150	4x KE2508ST	See ref.1 min bending radius for PE 5 mm. Style 2587 or 2550 or 21098 or 21216 or 21089 or 2464 or equivalent
FAN MOTOR M2	1180	AWG14 4G2.5	U1-V1-W1-GND	80	4x BP-P10	120	4x KE2508ST	Style 2587 or 2550 or 21098 or 21216 or 21089 or 2464 or equivalent
PRESSURE SWITCH PV	1700	AWG18 3x1	4-5-GND	50	2xRF-U4 + RF-M4 (GND)	80	3x KE110	
PRESSURE SWITCH AP	350	AWG18 2x1	4-6	50	TYCO See ref.2	80	2x KE110	
SIGNAL LAMP	500	AWG18 1mm² red	0-3-0-7	-	2xRF-F608P (0-7) + 2xBF-F608P (0-3)	-	-	STYLE 1015 t≥90°C
DOOR EARTH CONN.	450	AWG10 6mm² Ye/Gr	-	-	S6-M5	-	S6-M5	STYLE 1015 t≥90°C. Connected only to the door
PANEL EARTH CONN.	200	AWG10 6mm² Ye/Gr	-	-	S6-M5	-	S6-M5	STYLE 1015 t≥90°C. Supply loose
DIGITAL CONTROLLER X5	200	AWG18 1mm² red	0-3-7-13	-	4xBN-FAR608 + X5	-	-	STYLE 1015 t≥90°C
PROBE KIT + WIRING	200	-	-	-	-	-	-	-
SOL. VALVE SL-EV	1050	4G0.34	0-3-3-8	-	-	-	-	CYJV Cable Assemblies See ref. 3

RACEWAY UL RECOGNIZED (EG. IBOCO T1-E, T1-EN, ...), H≤40
 *** Power supply line must be protected by a raceway (duct) or an approved conduit system
 Wire harness UL certificated CCNZPFW2-ZPFW8



ID	Description	Type	Manuf.	Code	Quant.	Notes
2205043621 rev00 CUBICLE E14 460V RAL7040 UL						
IG	MAIN SWITCH	OT25F3	ABB	1089949843	1	
	SHAFT HANDLE	OX56X130	ABB	1089949855	1	
		OHYS3AH1	ABB	1089949852	1	
H1	SIGNAL LAMP 24V GREEN CURUS	33U.5		1089959612	1	loose in a plastic bag
H2	SIGNAL LAMP 24V RED CURUS	33U.5		1089959613	1	
Q2	FAN CIRCUIT BREAKER (1.4-2A)	3RV2011-1CA10 (1,8...2,5A)	SIEMENS	1089926728	1	
	AUX. CONTACT	3RV2901-1A	SIEMENS	1089926758	1	
	CONN. BLOCK FOR 3RV S0/S00	3RV2928-1K	SIEMENS	1089926791	1	
K1	CONTACTOR	3RT2016-1AB02	SIEMENS	1089943850	1	
K2	CONTACTOR	3RT2015-1AB02	SIEMENS	1089943844	1	
K4-K5	AUX RELAY	G2R-1-SNI 24Vac	OMRON	1089944926	2	
	AUX RELAY BASE	P2RF-05-E	OMRON	1089944933	2	
TR	TRANSFORMER	230-460/24-25V,70VA UL		2202823600	1	
FU1	FUSE	KTK-1		1089916848	3	
	FUSE HOLDER	BCH 3x38		1089959403	1	
FU2	FUSE	5x20 3A GMD-3		1089916879	1	
	FUSE HOLDER	8WA1011-1SF12		1089050616	1	
X1	TERMINAL	HMM.2/2+2/GR	CABUR	1088151036	5	
	GROUND TERMINAL	HTE.2/2+2	CABUR	1088151011	1	
	END PLATE	HMT.2/2+2/PT/GR	CABUR	1088151015	1	
	END STOP	249-116	WAGO	1088003181	1	
X2	TERMINAL	HMM.2/2+2/GR	CABUR	1088151036	8	
	END PLATE	HMT.2/2+2/PT/GR	CABUR	1088151015	1	
	END STOP	249-116	WAGO	1088003181	2	
X3	GROUND TERMINAL	HTE.2/2+2	CABUR	1088151011	1	
	END PLATE	HMT.2/2+2/PT/GR	CABUR	1088151015	1	
GND	GROUND TERMINAL	8WA1011-1PH00	SIEMENS	1089050628	1	
	CABLE GLAND (SUPPLY LINE)	M25x1,5		0698514117	2	1xloose
	NUT	M25x1,5		0697980954	2	1xloose
	CABLE GLAND (M1)	M25x1,5 STR		0698514122	1	
	NUT	M25x1,5		0697980954	1	
	CABLE GLAND (M2)	M20x1,5		0698514121	1	
	NUT	M20x1,5		0697980953	1	
	CABLE GLAND (PV, AP, SL-EV,AUX)	M16x1,5		0698514123	4	
	NUT	M16x1,5		0697980920	4	
	MULTIPL.SEALING (AUX)	2x4		0698514813	1	
	BOX	-		2202807000	1	
	PRINTED DOOR (RAL 7040)	-		2204214981	1	
	FUSES LABEL	-		2202829800	1	
	LABEL C.B. MANTENANCE	-		2202873105	1	
POR	SEAL	8x8		2204212701	2m	
KPH	PHASE SEQUENCE RELAY	DPA 51 C M44	GAVAZZI	1089957516	1	
AP	CAP	926 683-3	TYCO	1088001523	1	
	SOCKET	AMP 926 893-1	TYCO	1088001534	2	
SL-EV	CABLE ASSY FOR SL-EV	XZ CP114L1L2 (L=2m)	TELEMECANIQUE	1088002120	1	
GVS1	INSULATION FOR TERMINAL	GVS12KV1.5	ELEKTROZUBERHOR	--	1	L=50 mm L=2x35mm + 1x25mm
GVS2	INSULATION FOR TERMINAL	GVS12KV1.5	ELEKTROZUBERHOR	--	3	
	PROBE KIT + WIRING	-		2205041651	1	
X5	CONNECTOR	63N040	CS	1089003857	1	
	GLOSSARY	-		2200772335	1	
	SERVICE DIAGRAM	A3 FORMAT		2205043620	2	

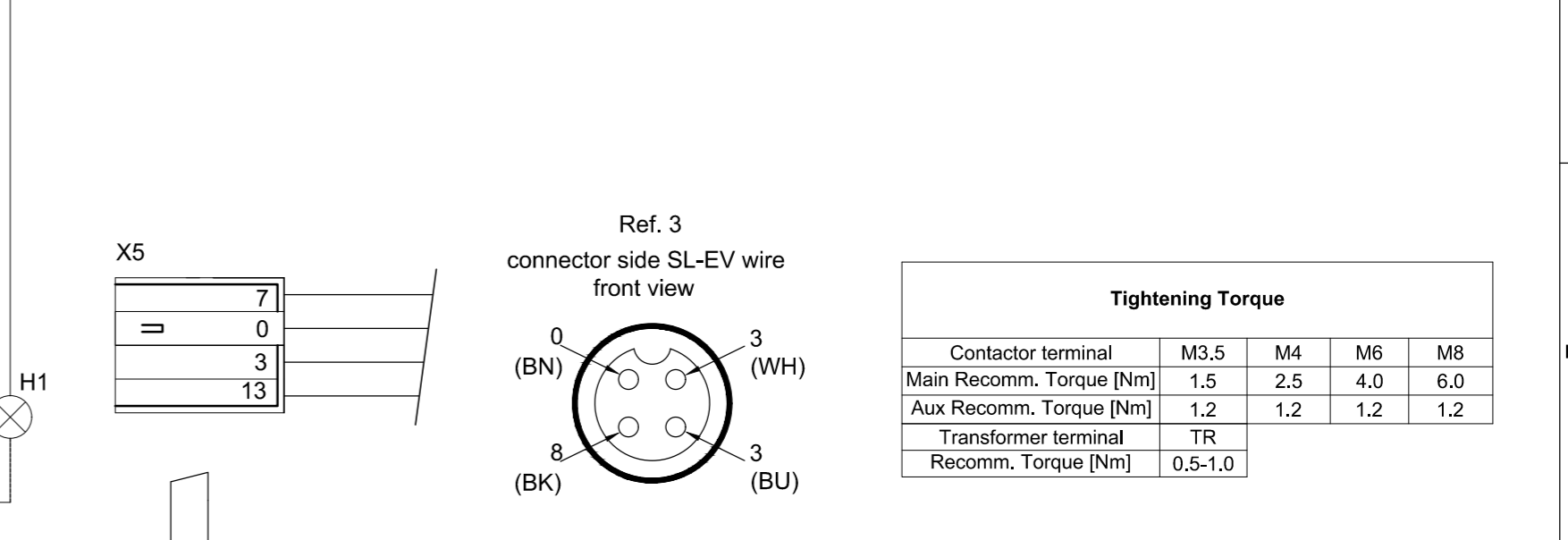
2205043622 rev00 CUBICLE E14 460V RAL7021UL: same as 2205043621 with following differences:
 PRINTED DOOR (RAL 7021) - 2204214983 1

2205043623 rev00 CUBICLE E14 460V RAL7021F UL: same as 2205043621 with following differences:
 PRINTED DOOR (RAL 7021F) - 2204214985 1

2205043624 rev00 CUBICLE E14 460V RAL7011 UL: same as 2205043621 with following differences:
 PRINTED DOOR (RAL 7011) - 2204214982 1

2205043625 rev00 CUBICLE E14 460V RAL5002 UL: same as 2205043621 with following differences:
 PRINTED DOOR (RAL 5002) - 2204214986 1

2205043626 rev01 CUBICLE E14 460V RAL7035 UL: same as 2205043621 with following differences:
 PRINTED DOOR (RAL 7035) - 2204214987 1



Name		General tolerances	
SERVICE DIAGRAM		1350K - v	
Material		E14 460/60 UL FC	
Treatment		ACDE	
Scale	Family	Compare	Drawing owner
Drawn by	Blank nr.	Replaces	Transferred from
Drawing format 02.00	Blank wt. Kg	Fini wt. Kg	CAI
Des checked.	Prod checked.	Approved.	Date
Approved Internal		20/02/2020	

CONFIDENTIAL: This document is property of Atlas Copco AB and shall not be distributed or used for manufacturing or communication to any other person or company.

Note	Position	Modified from	Date	Intr./Appd.
03		Title block updated & DN 220541 17 and CID28208	04-04-2022	

All materials supplied are in compliance with the requirements of the List of Prohibited Substances

Parent 3D Model Ed.Version 3D

2205043620