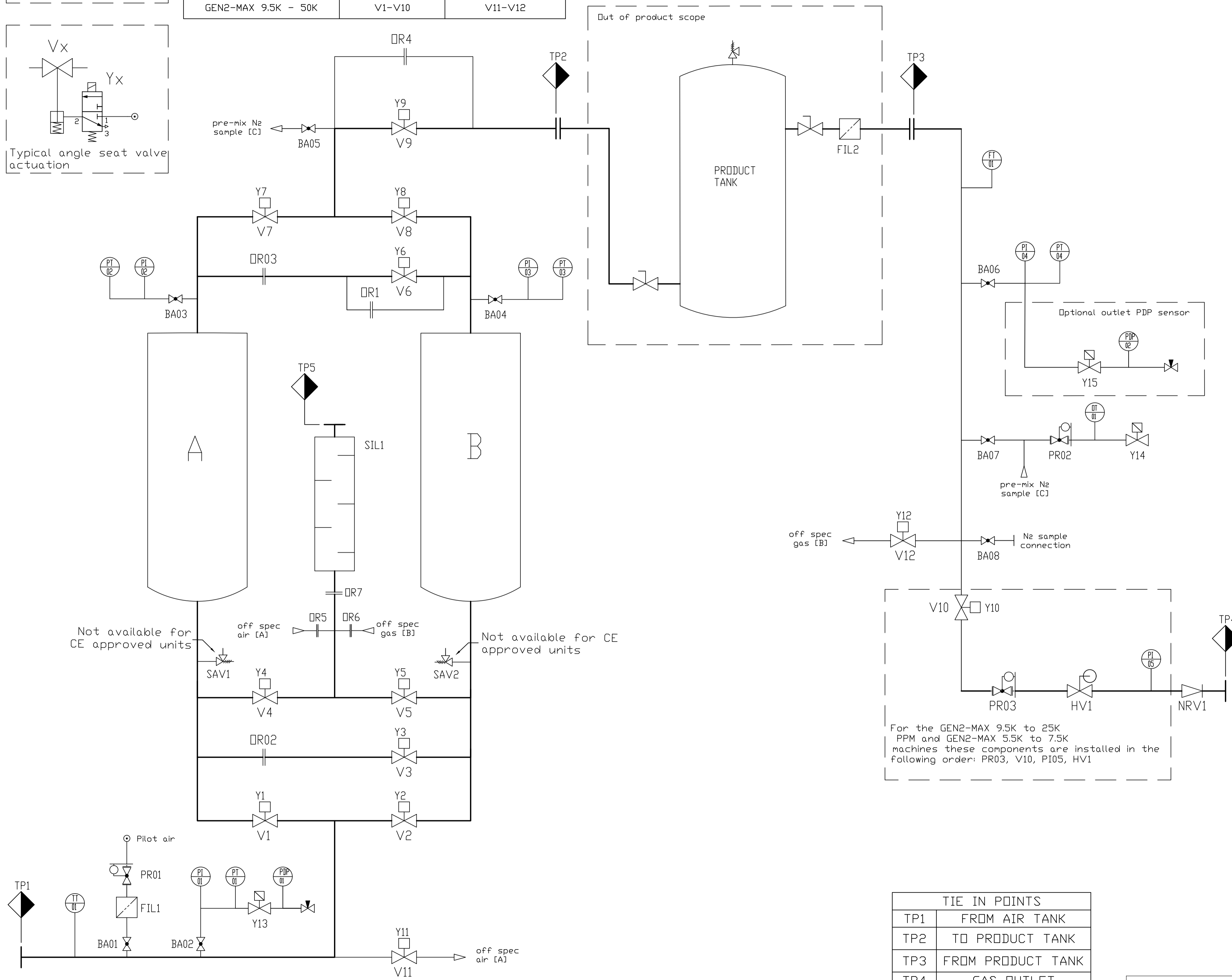


FLOW DIAGRAM GEN2-MAX 5.5K - 50K

	BUTTERFLY VALVE	ANGLE SEAT VALVE
GEN2-MAX 5.5K - 7.5K PPM	V9	V1-V8,V10-12
GEN2-MAX 5.5K - 7.5K PCT	V9-V10	V-V8,V11-V12
GEN2-MAX 9.5K - 50K	V1-V10	V11-V12

Typical butterfly valve actuation

Typical angle seat valve actuation



hardware

- valves**
 - A ADSORBER A
 - B ADSORBER B
 - SIL1 BLOW OFF SILENCER
 - V1 INLET TRANSFER VALVE ADSORBER A
 - V2 INLET TRANSFER VALVE ADSORBER B
 - V3 BOTTOM EQUALISATION VALVE
 - V4 BLOW OFF VALVE ADSORBER A
 - V5 BLOW OFF VALVE ADSORBER B
 - V6 TOP EQUALISATION VALVE
 - V7 OUTLET TRANSFER ADSORBER A
 - V8 OUTLET TRANSFER ADSORBER B
 - V9 MINIMUM PRESSURE VALVE
 - V10 CONSUMER VALVE
 - V11 INLET FLUSHING VALVE
 - V12 OUTLET FLUSHING VALVE
 - Y1-Y12 SPOOL VALVE MONOSTABLE
 - Y13 INLET PDP SENSOR 2/2 SPOOLVALVE
 - Y14 PURITY SENSOR 2/2 SPOOLVALVE
 - Y15 OUTLET PDP SENSOR 2/2 SPOOLVALVE
- ball valves**
 - BA01 PILOT AIR BALL VALVE
 - BA02 INLET PRESSURE BALL VALVE
 - BA03 ADSORBER A PRESSURE BALL VALVE
 - BA04 ADSORBER B PRESSURE BALL VALVE
 - BA05 PRE-MIX PURITY BALL VALVE
 - BA06 OUTLET PRESSURE BALL VALVE
 - BA07 NITROGEN PURITY ANALYSIS BALL VALVE
 - BA08 OUTLET SAMPLE BALL VALVE
- safety valves**
 - SAV1 ADSORBER A SAFETY VALVE
 - SAV2 ADSORBER B SAFETY VALVE
- regulators**
 - PR01 PILOT AIR PRESSURE REGULATOR
 - PR02 NITROGEN PURITY PRESSURE REGULATOR
 - PR03 CONSUMER PRESSURE REGULATOR
- manually operated valves**
 - HV1 MANUAL FLOW REGULATING VALVE
- non return valves**
 - NRV1 NON RETURN VALVE
- nozzles**
 - DR01 REGENERATION PURGE NOZZLE
 - DR02 BOTTOM EQUALISATION NOZZLE
 - DR03 TOP EQUALISATION NOZZLE
 - DR04 STARTUP NOZZLE
 - DR05 INLET FLUSHING NOZZLE
 - DR06 OUTLET FLUSHING NOZZLE
 - DR07 EXHAUST NOZZLE
- sensors**
 - PT01 INLET PRESSURE TRANSMITTER
 - PT02 ADSORBER A PRESSURE TRANSMITTER
 - PT03 ADSORBER B PRESSURE TRANSMITTER
 - PT04 OUTLET PRESSURE TRANSMITTER
 - PDP01 INLET PRESSURE DEWPOINT
 - PDP02 OUTLET PRESSURE DEWPOINT (OPTIONAL)
 - TT01 INLET TEMPERATURE TRANSMITTER
 - FT01 NITROGEN FLOW TRANSMITTER
 - OT01 OXYGEN ANALYSER
- filters**
 - FIL1 PILOT AIR FILTER
 - FIL2 FINE OUTLET DUST FILTER

TIE IN POINTS	
TP1	FROM AIR TANK
TP2	TO PRODUCT TANK
TP3	FROM PRODUCT TANK
TP4	GAS OUTLET
TP5	WASTE EXHAUST

All materials supplied are in compliance with the requirements of the List of Prohibited Substances

Name		DIAGRAM FLOW		GEN2-MAX 5.5K - 50K		Confidentiality Class acc. to 1102K	
Material		NOT APPLICABLE		Confidential		ACD	
Treatment		NOT APPLICABLE		NLY		Drawing owner	
Scale		A1		Compare		9827299511	
Drawn by		INEEXTPRAP		Blank nr.		Replaces	
Version Draw		01		Blank wt.		0	
Des checked		Prod checked		Approved		Date	
Parent 3D Model		Ed. Version 3D		1/28/2022		9829500761-01	

CONFIDENTIAL: This document is property of Ineextprap and should not be distributed outside the company.

Note	Posi. Bon.	Modified from	Date	Intr./Appd.
1			4/21/2022	