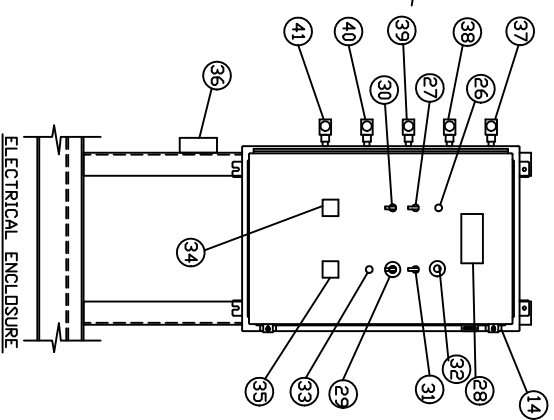
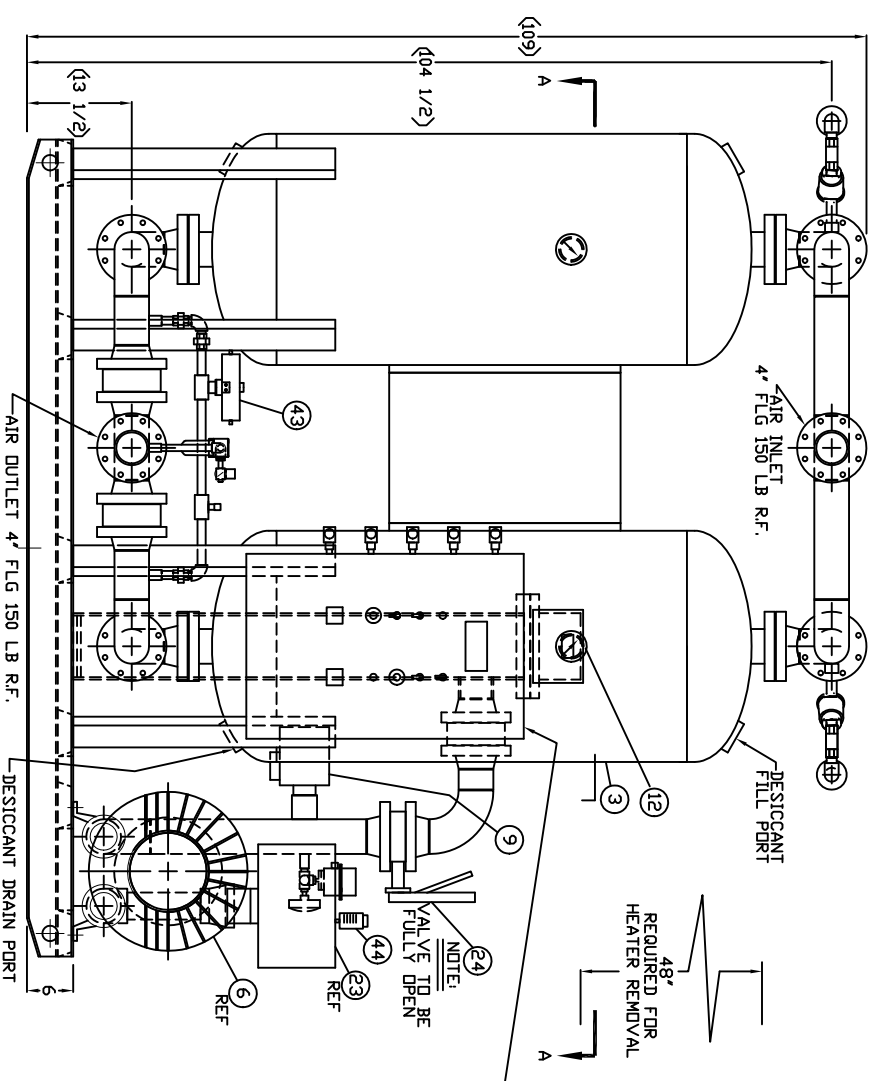


VIEW A-A
BOTTOM LINE PIPING



ITEM	QTY	DESCRIPTION
1	1	HEATER HOUSING
2	1	K-TYPE THERMOCOUPLE FOR HEATER TEMPERATURE CONTROL / PURGE AIR TEMP.
3	2	DESICCANT TOWER
4	1	HEATER 460VAC-3PH-60HZ
5	2	WAFFER STYLE OUTLET CHECK VALVE
6	1	BLOWER 460VAC-3PH-60HZ
7	1	REPRESSUREIZATION VALVE
8	2	PURGE CHECK VALVE
9	1	BLOWER PRESSURE RELIEF VALVE
10	1	BLOWER SAFETY CHECK VALVE
11	2	TOWER PRESSURE RELIEF VALVE SET@ 150 PSIG
12	2	TOWER PRESSURE GAUGE 0-200 PSIG
13	1	CONTROL AIR FILTER
14	1	ELECTRICAL ENCLOSURE
15	2	INLET VALVE
16	2	DEPRESSURIZATION VALVE
17	2	PURGE EXHAUST VALVE
18	1	PURGE EXHAUST (4\"/>
19	2	DEPRESSURIZATION MUFFLER
20	1	VENT/TEST BALL VALVE
21	1	PRESSURE GAUGE FOR BLOWER BACKPRESSURE, 0-10 PSIG RANGE
22	1	BLOWER SAFETY PRESSURE SWITCH
23	1	BLOWER INTAKE FILTER SILENCER
24	1	BLOWER ISOLATION VALVE
25		(NOT USED)
26	1	POWER ON LIGHT, GREEN
27	1	POWER OFF/ON SWITCH
28	1	PLC DISPLAY
29	1	PLC STEP PUSH BUTTON
30	1	DEMAND CYCLE CONTROL SWITCH
31	1	DRY AIR COOLING SWITCH
32	1	COMMON ALARM LIGHT (RED)
33	1	ALARM RESET
34	1	HEATER TEMPERATURE CONTROLLER
35	1	HEATER HIGH TEMPERATURE CONTROLLER
36	1	TOWER SELECTOR VALVE
37	1	RIGHT TOWER DEPRESSURIZATION PILOT SOLENOID
38	1	RIGHT TOWER PURGE EXHAUST PILOT SOLENOID
39	1	REPRESSUREIZATION PILOT SOLENOID
40	1	LEFT TOWER PURGE EXHAUST PILOT SOLENOID
41	1	LEFT TOWER DEPRESSUREIZATION PILOT SOLENOID
42	1	BLOWER FLEX CONNECTOR
43	1	RE-PRESSURIZATION METERING VALVE
44	1	BLOWER INTAKE FILTER PRESSURE DIFFERENTIAL

SPECIFICATIONS:

DESICCANT QUANTITY PER TOWER: 1250 LBS
TOTAL DESICCANT: 2500 LBS
DESICCANT TYPE: 3/16\"/>

NOTES:

- 1 ALL DIMENSIONS ARE IN INCHES UNLESS OTHERWISE NOTED.
- 2 MARK/TAG COMPONENT WITH SULLIAR PART NUMBER AND REVISION.

TOLERANCES U.S.		FINISH	
DIMENSIONS ARE IN INCHES	UNLESS NOTED	AS CAST UNLESS NOTED	
ALL DIMENSIONS: ±.015"			
ANGULAR DIMENSION: ±.01°			
HOLE DIAMETER: ±.003			
DATE: 3-16-11	SCALE: 1/8"=1'-0"	REV: 1	DF: 1
DESIGNER: XJLD	DRAWN BY: MZ	CHECKED: 31654	DATE: 3-16-11
TITLE: BLOWER PURGE DRYER NBP-2000		PART NO: NBP-2000M1	
31654		REV: 00	