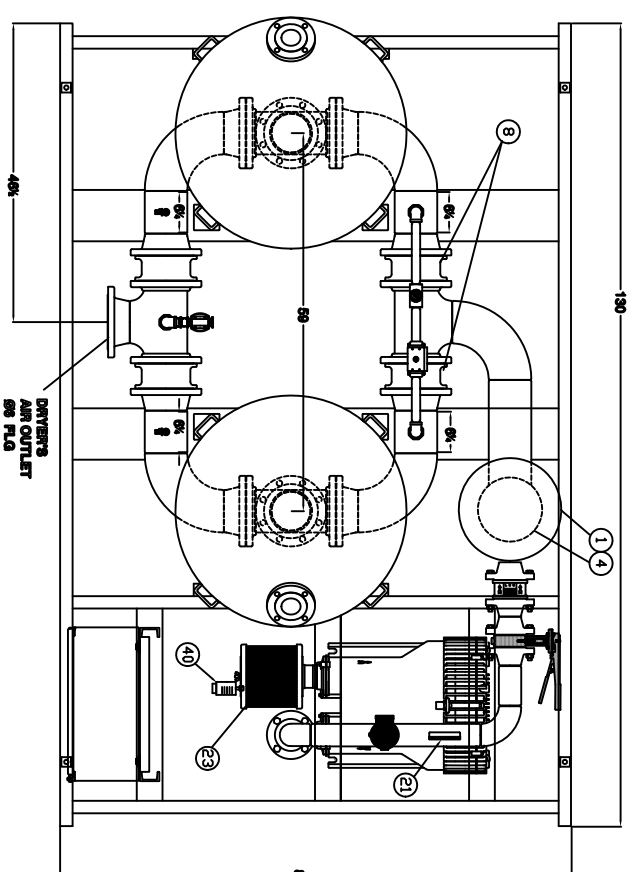
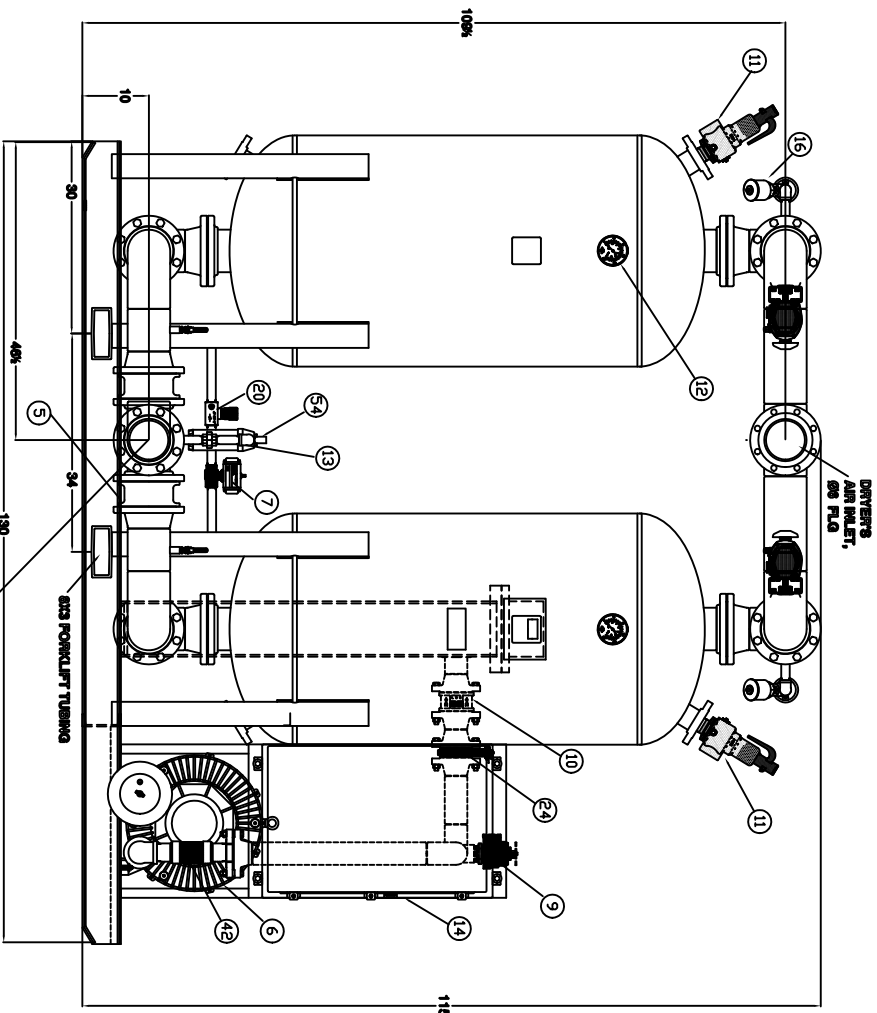


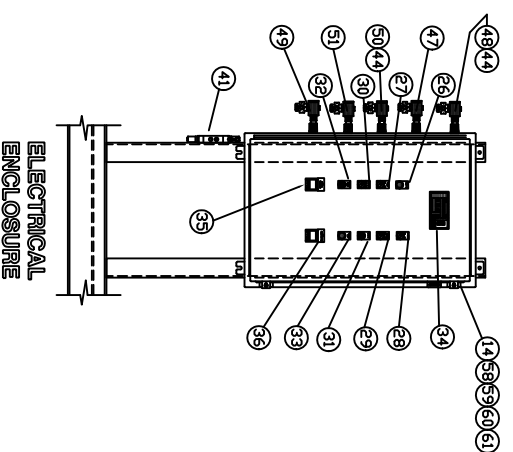
TOP VIEW OF UPPER PIPING



TOP VIEW OF LOWER PIPING



FRONT VIEW



ELECTRICAL ENCLOSURE

ITEM	QTY	DESCRIPTION
1	1	HEATER HOUSING
2	1	1/2" TYPE THERMOCOUPLE FOR HEATER TEMPERATURE CONTROL / PURGE AIR TEMP.
3	2	DESICCANT TOWER
4	1	HEATER KW 55 KW
5	2	WAFER STYLE OUTLET CHECK VALVE
6	1	BLOWER 15 HP
7	1	REPRESSURIZATION VALVE
8	2	PURGE CHECK VALVE
9	1	BLOWER PRESSURE RELIEF VALVE
10	1	BLOWER SAFETY CHECK VALVE
11	2	TOWER PRESSURE RELIEF VALVE
12	2	TOWER PRESSURE GAUGE
13	1	CONTROL AIR FILTER
14	1	ELECTRICAL ENCLOSURE
15	2	INLET VALVE
16	2	DEPRESSURIZATION VALVE
17	2	PURGE EXHAUST VALVE
18	1	PURGE EXHAUST
19	2	DEPRESSURIZATION MUFFLER
20	1	PURGE ADJUSTMENT VALVE
21	1	PRESSURE GAUGE, FOR BLOWER BACK PRESSURE
22	1	BLOWER SAFETY PRESSURE SWITCH (outside enclosure)
23	1	BLOWER INTAKE FILTER SILENCER
24	1	BLOWER ISOLATION VALVE
25	1	N/A
26	1	POWER ON
27	1	POWER OFF/ON SWITCH
28	1	DEMAND CYCLE OFF/ON SWITCH (OPTION)
29	1	DRY AIR COOLING OFF/ON SWITCH
30	1	MANUAL/AUTOMATIC SWITCH
31	1	STEP CYCLE PUSHRUBBION (FOR TROUBLESHOOTING ONLY)
32	1	ALARM RESET PUSHRUBBION
33	1	COMMON ALARM LIGHT , RED
34	1	TEXT DISPLAY
35	1	HEATER HI LIMIT/PURGE TEMP. CONTROLLER
36	1	HEATER HI LIMIT/MID RANGE CUTOFF TEMP. CONTROLLER
37		(NOT USED)
38		(NOT USED)
39		(NOT USED)
40	1	BLOWER FILTER ELEMENT CHANGE INDICATOR
41	1	TOWER SELECTOR VALVE
42	1	BLOWER FLEX CONNECTOR
43	1	REPRESSURIZATION BALL VALVE
44	2	PURGE EXHAUST (OPEN SLID) CONTROL VALVE
45	1	HEATER HIGH LIMIT THERMOCOUPLE LOCATED INSIDE HEATER IN THERMOWELL
46	1	N/A
47	1	LEFT TOWER DEPRESSURIZATION PILOT SOLENOID VALVE, 3-WAY
48	1	LEFT TOWER PURGE EXHAUST PILOT SOLENOID VALVE, 3-WAY
49	1	REPRESSURIZATION PILOT SOLENOID VALVE, 3-WAY
50	1	RIGHT TOWER PURGE EXHAUST PILOT SOLENOID VALVE, 3-WAY
51	1	RIGHT TOWER DEPRESSURIZATION PILOT SOLENOID VALVE, 3-WAY
52	1	N/A
53	1	CONTROL AIR LINE
54	1	CONTROL AIR FILTER DP INDICATOR
55	1	N/A
56	1	N/A
57	1	N/A
58	1	LEFT TOWER LOW PRESSURE SWITCH
59	1	LEFT TOWER HIGH PRESSURE SWITCH
60	1	RIGHT TOWER LOW PRESSURE SWITCH
61	1	RIGHT TOWER HIGH PRESSURE SWITCH

SPECIFICATIONS.

DESICCANT PER TOWER: 1875LBS
DESICCANT TYPE: 3/16" DIA. ACTIVATED ALUMINA
DESIGN INLET TEMPERATURE: 100 DEG F
DESIGN WORKING PRESSURE: 100-PSIG
DESIGN PURGE PRESSURE: 100-PSIG
MAXIMUM TOWER DESIGN TEMPERATURE: 450 DEGREE F
DRYING AIR FLOW: DOWNDRAFT
REGENERATING AIR FLOW: UPDRAFT

- NOTES:
- 1 ALL DIMENSIONS ARE IN INCHES UNLESS OTHERWISE NOTED.
 - 2 MARK THE COMPONENT WITH SULLUR PART NUMBER AND REVISION.
 - 3 PIPING CONNECTIONS TO AND FROM FILTERS BY CUSTOMER
 - 4 DIMENSIONS PROVIDED FOR REFERENCE ONLY

TOLERANCES UNLESS OTHERWISE SPECIFIED		FINISH		MATERIALS	
DIMENSIONS	AS SHOWN	ALL SURFACES	AS SHOWN	ALL DIMENSIONS	AS SHOWN
ALL DIMENSIONS	± 1/16"	ALL DIMENSIONS	± 1/16"	ALL DIMENSIONS	± 1/16"
ALL DIMENSIONS	± 1/16"	ALL DIMENSIONS	± 1/16"	ALL DIMENSIONS	± 1/16"
ALL DIMENSIONS	± 1/16"	ALL DIMENSIONS	± 1/16"	ALL DIMENSIONS	± 1/16"

DATE	3/16/54	BY	NBP-3000-H1
NO.	10500LBS	REV.	1 OF 1