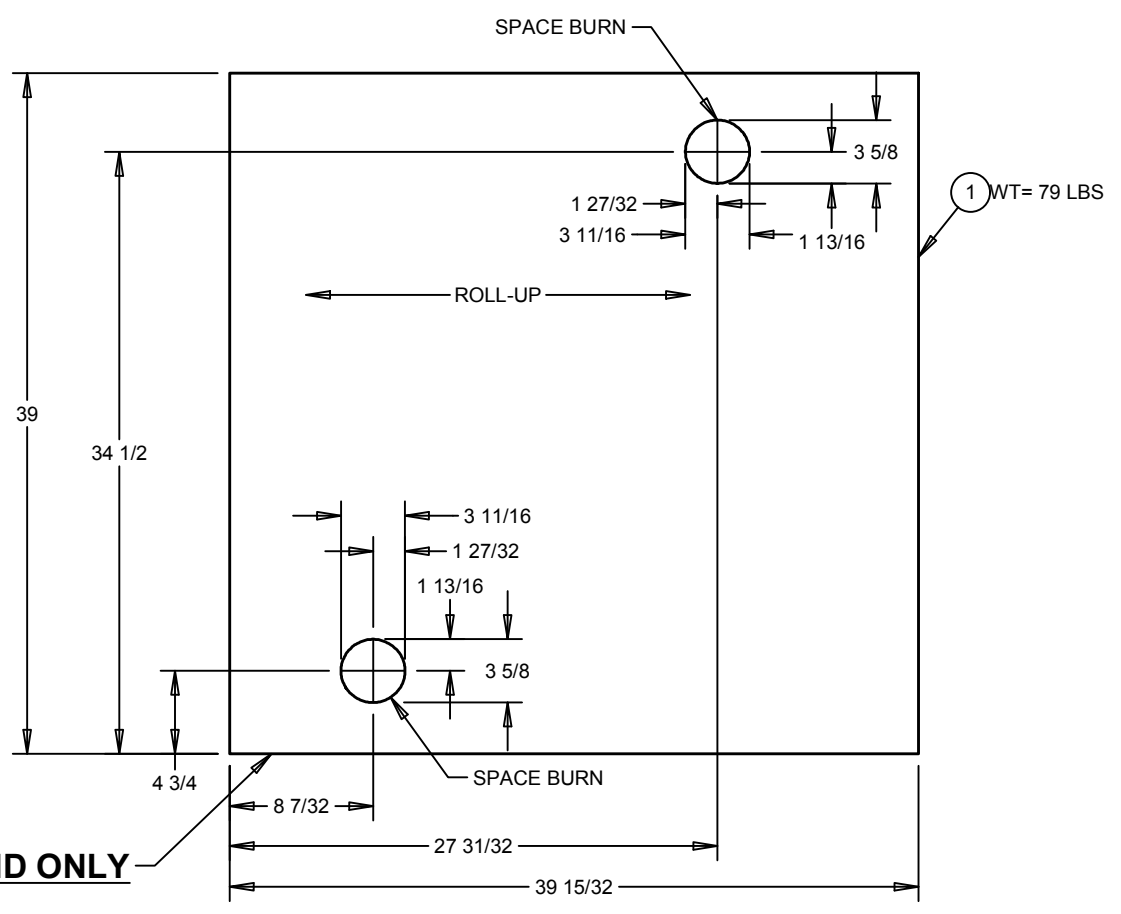
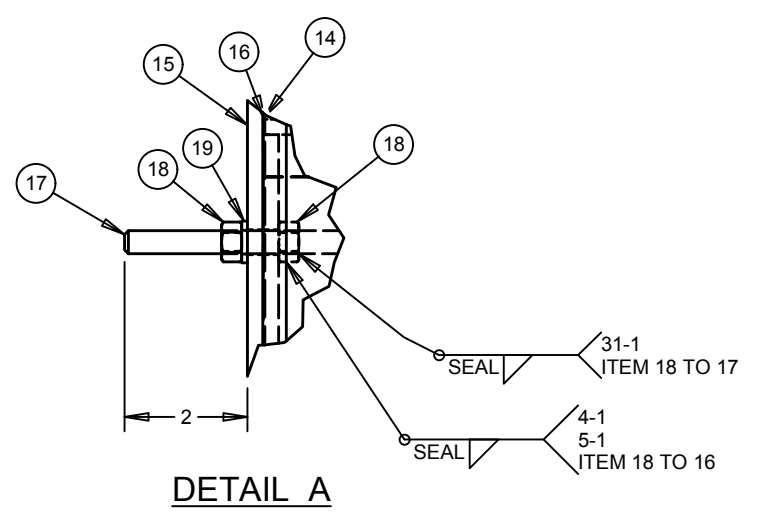
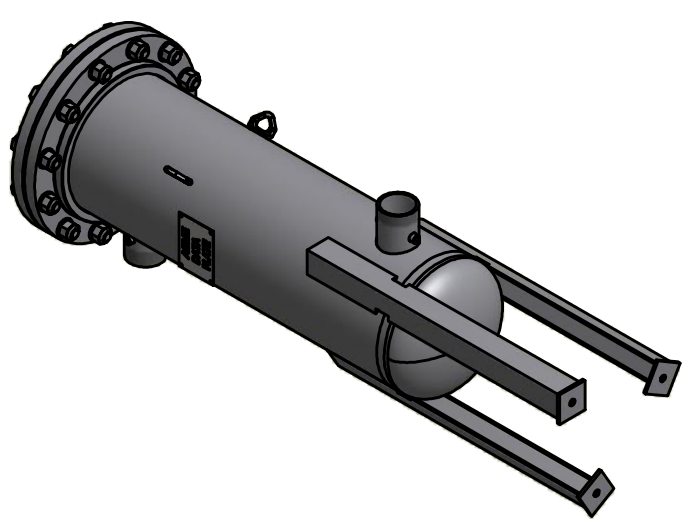


PLASMA  PLATE  
REVIEW DATE 7/6/17  
REV C INIT KAT

COVER REMOVED FOR CLARITY

- SHELL .187 NOM SA414 GR G P.V.Q.  
DES. THK. .094 E= 70%  
HEADS .176 MIN SA414 GR G P.V.Q.  
DES. THK. .094 S= 85%
- WORKING PRESSURE 150 PSI
- TEST PRESSURE HYDRO 195 PSI
- TEMPERATURE MIN. 0°F MAX 200°F
- ALL WELDED FITTINGS MUST BE HELD PERPENDICULAR TO CENTERLINE WITHIN 3/8" IN 12"
- IMPACT TEST EXEMPT PER PAR.UG-20(F)
- SPECIFICATIONS:  
CALCULATED WEIGHT: 359 LB  
CALCULATED CAPACITY: 20 GALLONS
- CRN- NONE
- N.D.T.- PT
- FINISH- SEE 139-980 FINISH SPEC



JOGGLE THIS END ONLY

ITEM	QTY	PART NUMBER	DESCRIPTION
24	1		SAFETY RELIEF VALVE PORT
23	1		AUTOMATIC DRAIN VENT PORT
22	1		AUTOMATIC DRAIN VENT PORT
21	1	60-140	DATA PLATE ASME CARBON STEEL
20	2	67-4827	LIFTING LUG PHOENIX 2-898-MINI
19	1	46-1954	WASHER FLAT 3/8 ZINC PLTD
18	2	46-1930	NUT 3/8-16 UNC HEX ZINC PLTD
17	1	48-4664	STUD 3/8-16 UNC X 4 LG SA193 B8 T304
16	1	69-5599	BRACKET 0.250 X 0.750 X 11.00
15	1	69-4257	TOP PLATE
14	1	69-5592	SEPARATOR ELEMENT (E 0500)
13	1	69-5600	SUPPORT PLATE 0.250 X 12 OD
12	1	48-5021	PIPE 3.000,CPLG & ELBOW ASSY S40 0.216W
11	1	48-5020	PIPE 3.000 & CPLG ASSY S40 0.216W X 4.19
10	1	41-664	CPLG 1.000 NPT SA105 3000# HALF
9	3	15-4933	LEG ASSY
8	12	47-5013	BOLT 7/8-9 UNC HEX X 4 ZINC PLTD
7	12	46-1958	WASHER FLAT 7/8 ZINC
6	12	46-1934	NUT 7/8-9 UNC HEX ZINC
5	1	69-3914	GASKET RING 12 150# VITON
4	1	52-1640	COVER ASSY
3	1	46-855	FLG 12 150# RFSO SA105
2	1	139-980-2	HEAD - ELL 12.75 DIA (911-003)
1	1	139-980-1	SHELL 0.187 X 39.00 X 39.47

(BUILT IN ACCORDANCE WITH LATEST EDITION OF SECTION VIII DIV 1 ASME CODE)

THIS DRAWING & SPECIFICATIONS ARE PROPERTY OF nano-purification solutions AND MAY NOT BE COPIED, REPRODUCED OR USED IN WHOLE OR PART AS A BASIS FOR DESIGN MANUFACTURE OR SALE WITHOUT PRIOR PERMISSION FROM nano-purification solutions.

REV	DESCRIPTION	BY	DATE
C	CORRECTED WEIGHT AND SEPARATOR ELEMENT PART NUMBER	KAT	7/6/17
B	ITEM 17 WAS A BOLT. CHANGED TO THREADED STUD	KAT	5/5/17
A	ISSUED		

UNLESS OTHERWISE SPECIFIED INCH TOLERANCES  
X.....±.1  
XX.....±.02  
XXX.....±.005  
FRACTIONS.....±1/16  
ANGLE.....±1°  
FINISH.....250

TITLE  
**50-12.75-20-150 ASME VESSEL**

MODEL: MEL 500

CUST DWG NO NONE TYPE ASME

DRAWN AGI 5/3/2017 CHECKED MF 6/20/2017 DRAWING NO 139-980 REV C

SIZE: C SHEET 1 OF 1

nanoo PURIFICATION SOLUTIONS