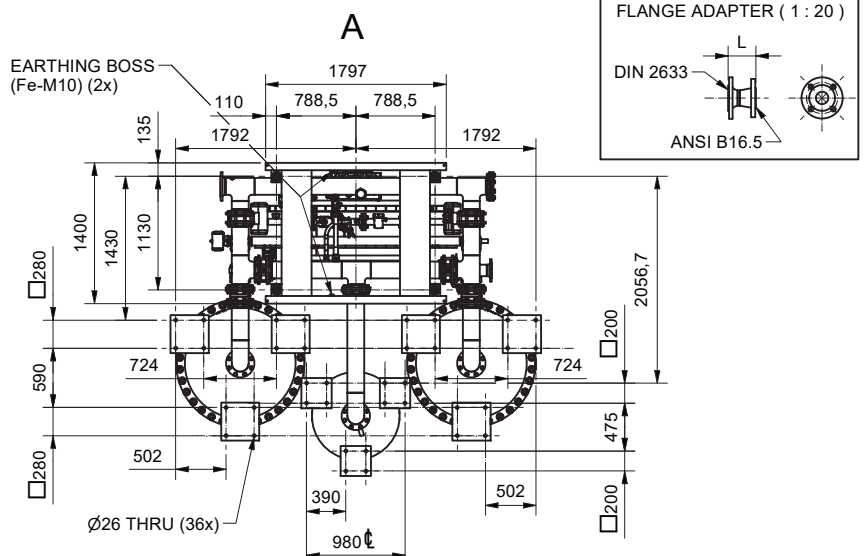
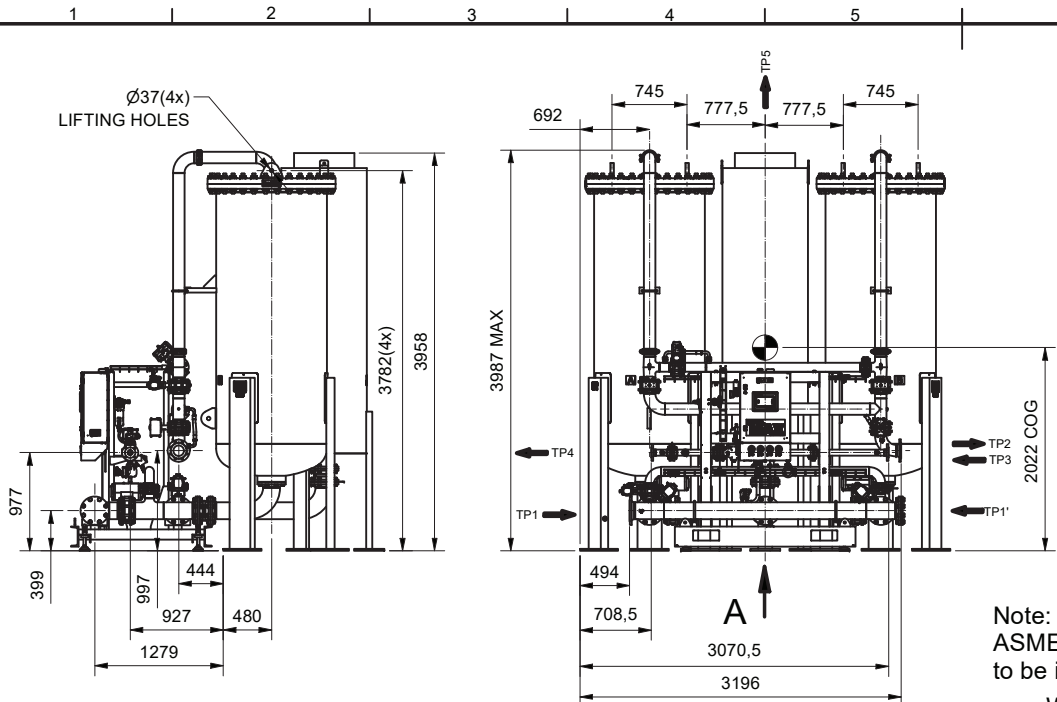


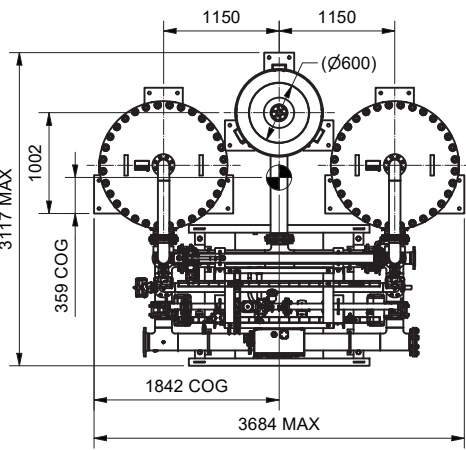
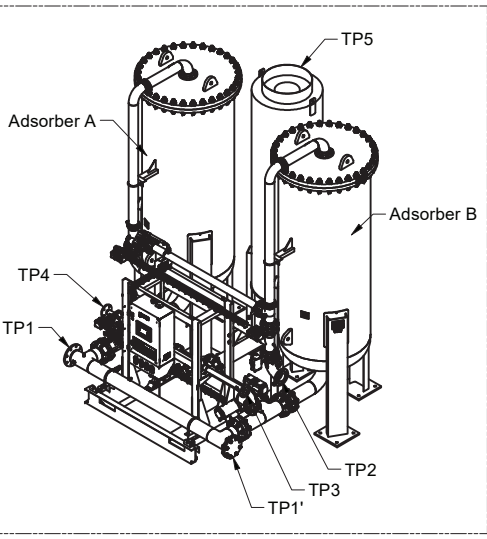
All materials supplied are in compliance with the requirements of the List of Prohibited Substances



Note:
ASME units will be delivered with the DIN to ANSI adapters (shipped as loose items), to be installed on TP1 to TP4

Weights:
Total vessel weight (filled, each) : 3372 kg
Silencer : 685 kg
Frame including pipeset : 1227 kg

● Center of Gravity (±100mm)

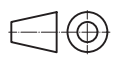


TIE- IN POINTS						
SYMBOL	DESCRIPTION	DIN 2633		ANSI B16.5		DIN to ANSI Adapter Length (L)(mm)
		SIZE	RATING	SIZE	RATING	
TP1	AIR INLET	DN150	PN16	6"	150Lbs	145
TP1'	AIR INLET REVERSED	DN150	PN16	6"	150Lbs	145
TP2	TO PRODUCT TANK	DN100	PN16	4"	150Lbs	130
TP3	FROM PRODUCT TANK	DN50	PN16	2"	150Lbs	110
TP4	GAS OUTLET	DN50	PN16	2"	150Lbs	110
TP5	WASTE EXHAUST GAS	Ø600mm		Ø600mm		NA

Tolerances, if not indicated, according to:						
STANDARD CLASS						
Name		DIMENS. DRWG		GEN2-MAX 31K PPM		Confidentiality Class acc. to 1102 K
Material		Not applicable				Internal
Treatment		Not Applicable				INV
Scale		1 : 50		Family		A3 Compare
Drawn by		INEBM		Blank nr.		Replaces
Version Drwg		Blank wt		Kg Fini wt.		Designation
Des checked.		Prod checked.		Approved.		Date
Released						18/01/2022
						Sheet 1 / 1
						1607011169-01

CONFIDENTIAL:
This document is our property and shall not without our permission be altered, copied, used for manufacturing or communicated to any other person or company.

1		21/04/2022	User Agent	1607011169-M1	
Ed	Position	Date	Intr./Appd.	Parent 3D model	Ed . Version 3D
	Modified from				



Drawing owner
NLY