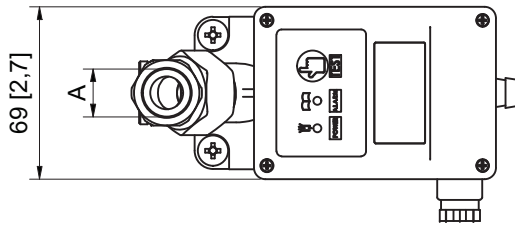
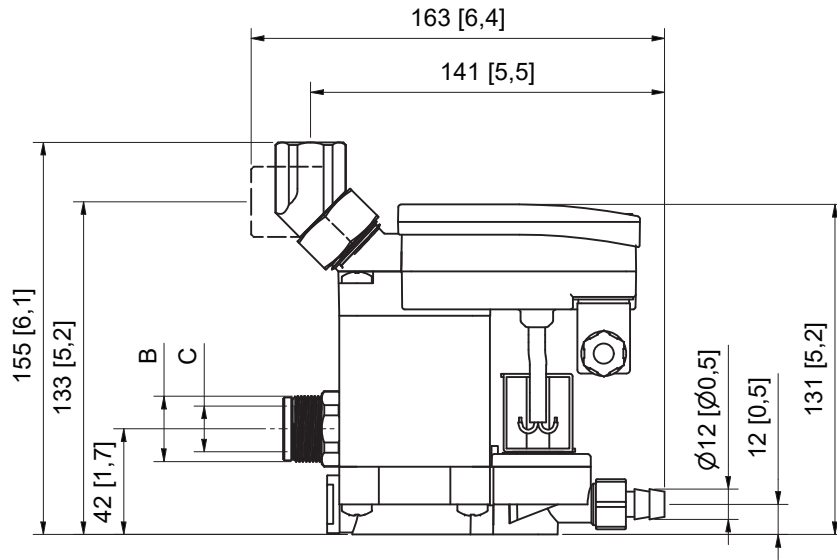


# NED 16LC

ProductNr	ItemNr	Model	Power Supply	Inlet A	Inlet B	Inlet C
8102 0482 31	4001 1652 31	NED 16LC B12 230V	240V AC	G 1/2" F	G 3/4" M	G 1/2" F
8102 0482 32	4001 1652 32	NED 16LC N12 115V	115V AC	NPT R1/2" F	-	NPT R1/2" F
8102 0482 33	4001 1652 33	NED 16LC B12 24Vac	24V AC	G 1/2" F	G 3/4" M	G 1/2" F
8102 0482 34	4001 1652 34	NED 16LC B12 24Vdc	24V DC	G 1/2" F	G 3/4" M	G 1/2" F



<b>PRESSURE EQUIPMENT PART</b>	
Designed, built, tested, certified and marked according to	
European Directive PED 2014/68/EU and its amendments	Art. 4.3
UK Pressure Equipment (Safety) Regulation 2016 S.I. 2016/1105	Regulation 8
Medium	AIR/WATER
Design pressure	16 bar
Min. design temperature	+1 °C
Max. design temperature	+60 °C
Nominal diameter (DN)	15
Volume	0,11 L
Test pressure	24 bar
Testing according to SQA-plan :	Sample test: <input checked="" type="checkbox"/>
	100% test: <input type="checkbox"/>

Tolerances, if not indicated, according to:									
STANDARD CLASS									
Name <b>DRAIN ELECTRONIC</b>					NED 16LC				
Material <b>Not Applicable</b>					Confidentiality Class acc. to 1102 K Confidential				
Treatment <b>Untreated</b>					INV				
		Scale 1 : 2		Family		A3 Compare		Drawing owner	
Drawn by AIR15392		Blank nr.		Replaces		API			
Version Drwg		Blank wt		Kg Fini wt. 0,700 kg		Designation		Sheet 1 / 1	
Des checked.		Prod checked.		Approved.		Date 7/06/2022		<b>4001165230-01</b>	
<b>Released</b>									

CONFIDENTIAL:

This document is our property and shall not without our permission be altered, copied, used for manufacturing or communicated to any other person or company.

2		Drain naming 16L was 40L	23/08/2022	User Agent	4001165430-M1	
Ed	Position	Modified from	Date	Intr./Appd.	Parent 3D model	Ed . Version 3D

All materials supplied are in compliance with the requirements of the List of Prohibited Substances