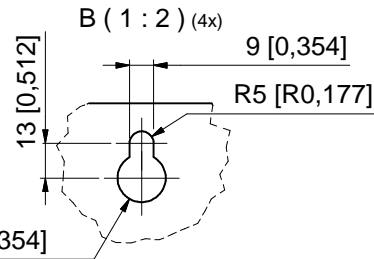
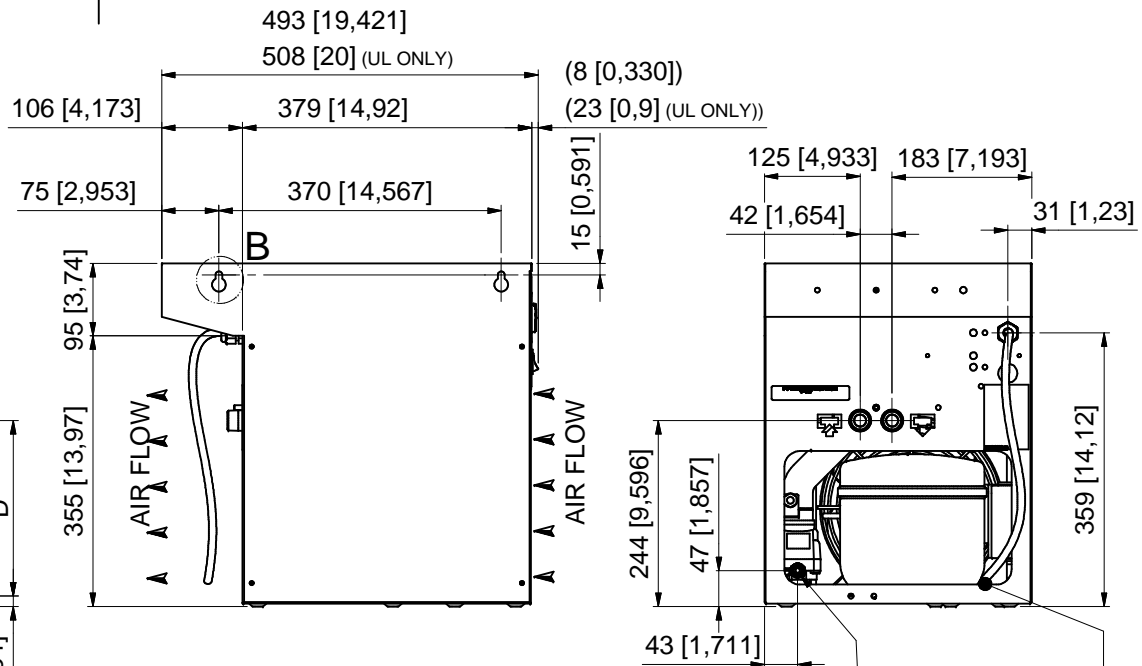
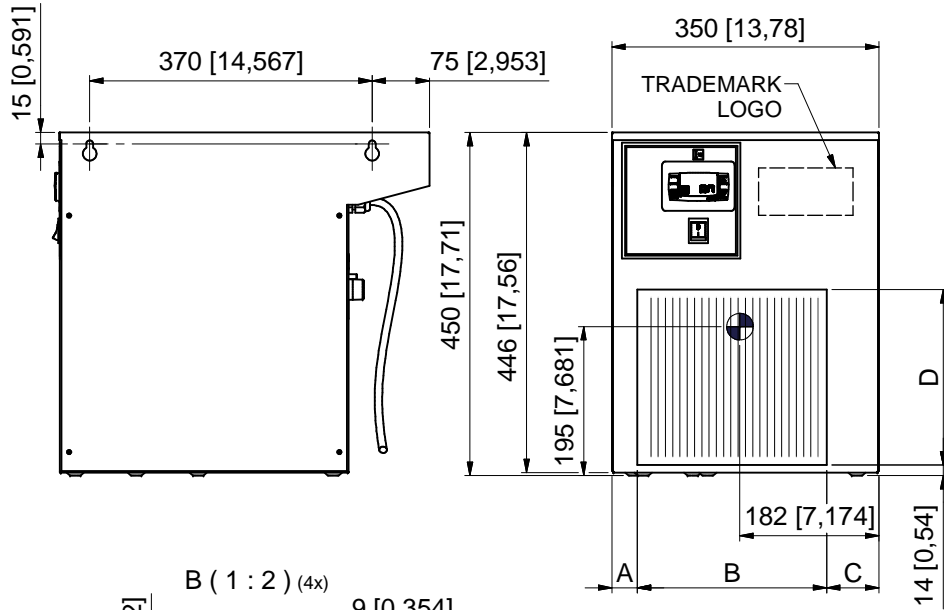
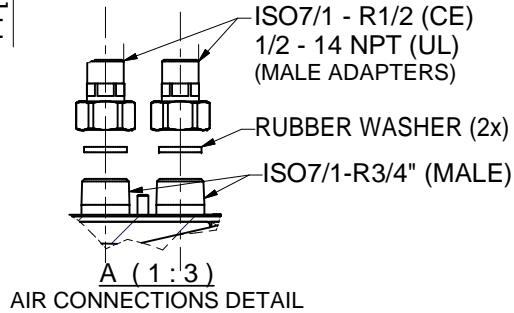
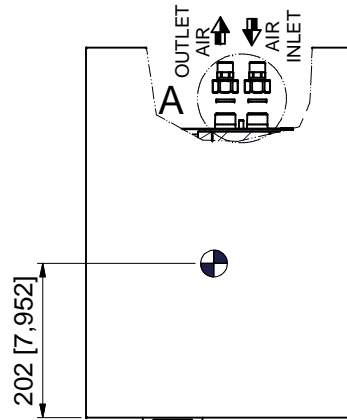


All materials supplied are in compliance with the requirements of the List of Prohibited Substances



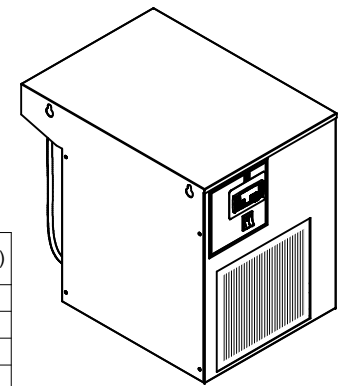
R9 [R0,354]

● CENTER OF GRAVITY



CONDENSATE DRAIN OUTLET
PIPE Ø int.10mm / 0,39 inch
ELECTRICAL CABLE OUTLET

DRYER VERSION	A (mm / inch)	B (mm / inch)	C (mm / inch)	D (mm / inch)
DXR0022E(E0)-DXR0050E(E2)	81 / 3,2	188 / 7,4	81 / 3,2	175 / 6,9
DXR0010N(E0)-DXR0020N(E2)	81 / 3,2	188 / 7,4	81 / 3,2	175 / 6,9
DXR0072E(E3)-DXR0108E(E4)	34 / 1,3	248 / 9,7	68 / 2,7	230 / 9
DXR0030N(E3)-HTR0025(H1)	34 / 1,3	248 / 9,7	68 / 2,7	230 / 9



ALL DIMENSIONS: mm [inch]

Tolerances, if not indicated, according to:									
Name	DIMENS. DRAWING			E0-4, H1 NP		Confidentiality Class acc. to 1102 K		Internal	
Material	Not applicable							INV	
Treatment	Not Applicable							INV	
Scale	1:5	Family	DRYERS E0-4 NP	Compare		Drawing Owner	Transferred from		
Drawn by	CAlebettin	Blank nr.		Replaces		CAI			
Drawing format	Blank wt.	0 Kg	Fini wt.	N/A	Designation	Sheet		1 / 1	
Des checked.	Prod checked.	Approved.	Date	03/02/2022	9828084707				

CONFIDENTIAL

This documents our property and shall not without our permission be altered, copied, used for manufacturing or communicated to any other person or company.

00	First release. CID.28141, DN22054103.	03-02-22	CAlebettin	9828084707	04.00		
Ed	Position	Modified from	Date	Intr./Appd.	Parent 3D model	Ed . Version 3D	Approved Internal