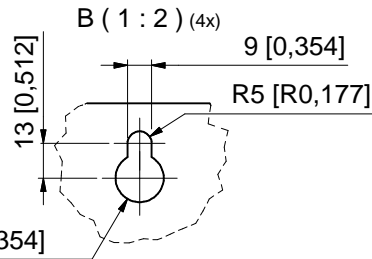
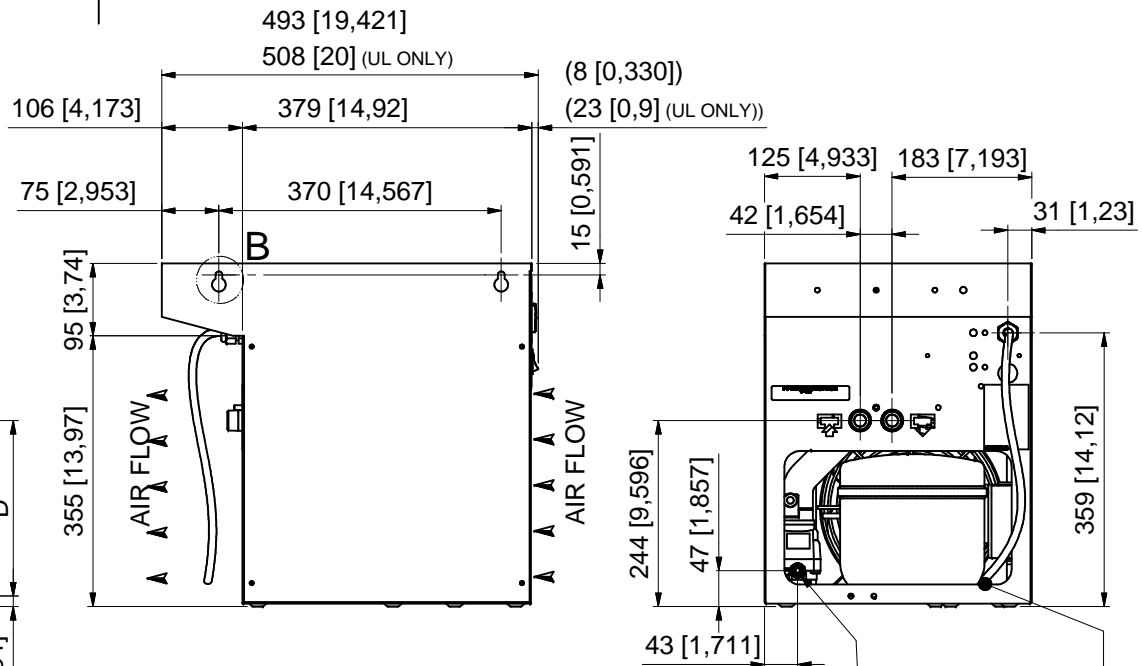
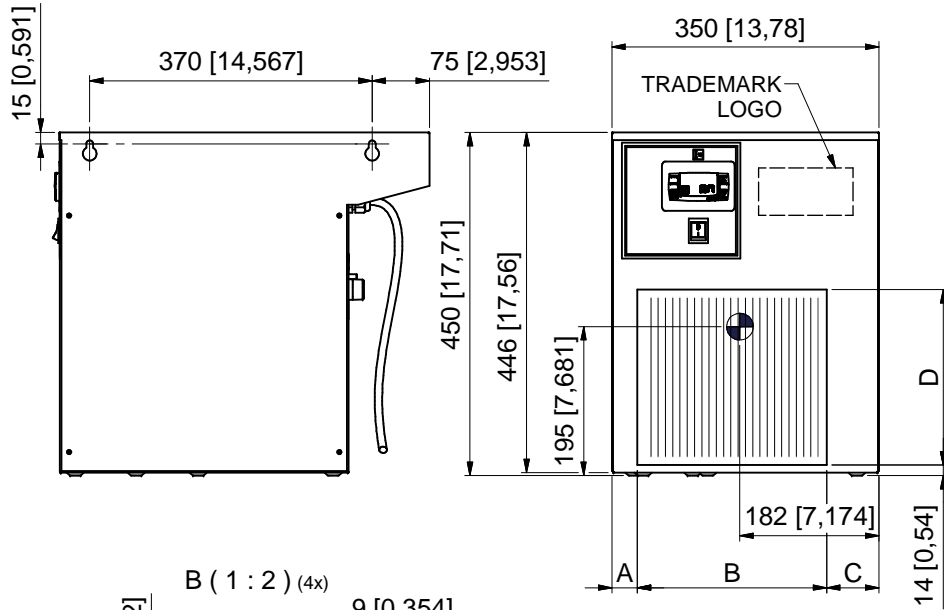
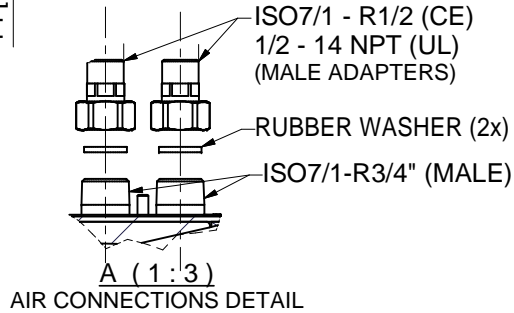
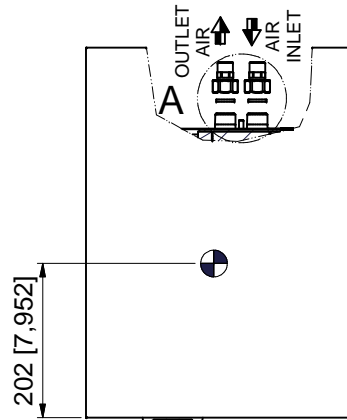


All materials supplied are in compliance with the requirements of the List of Prohibited Substances



R9 [R0,354]

● CENTER OF GRAVITY



CONDENSATE DRAIN OUTLET
PIPE Ø int.10mm / 0,39 inch
ELECTRICAL CABLE OUTLET

DRYER VERSION	A (mm / inch)	B (mm / inch)	C (mm / inch)	D (mm / inch)
DXR0022E(E0)-DXR0050E(E2)	81 / 3,2	188 / 7,4	81 / 3,2	175 / 6,9
DXR0010N(E0)-DXR0020N(E2)	81 / 3,2	188 / 7,4	81 / 3,2	175 / 6,9
DXR0072E(E3)-DXR0108E(E4)	34 / 1,3	248 / 9,7	68 / 2,7	230 / 9
DXR0030N(E3)-HTR0025(H1)	34 / 1,3	248 / 9,7	68 / 2,7	230 / 9

ALL DIMENSIONS: mm [inch]

Tolerances, if not indicated, according to:

Name	DIMENS. DRAWING		E0-4, H1 NP	Confidentiality Class acc. to 1102 K	
Material	Not applicable		Internal	INV	
Treatment	Not Applicable				
Scale	1:5	Family	DRYERS E0-4 NP	Compare	Drawing Owner
Drawn by	CAlebettin	Blank nr.		Replaces	Transferred from
Drawing format	Blank wt.	0 Kg	Fini wt.	N/A	CAI
STATUS	Des checked.	Prod checked.	Approved.	Date	Sheet 1 / 1
				03/02/2022	

9828084707

CONFIDENTIAL:

This document is our property and shall not without our permission be altered, copied, used for manufacturing or communicated to any other person or company.

00	First release. CID.28141, DN22054103.	03-02-22	CAlebettin	9828084707	04.00
Ed	Position	Date	Intr./Appd.	Parent 3D model	Ed . Version 3D
	Modified from				Approved Internal