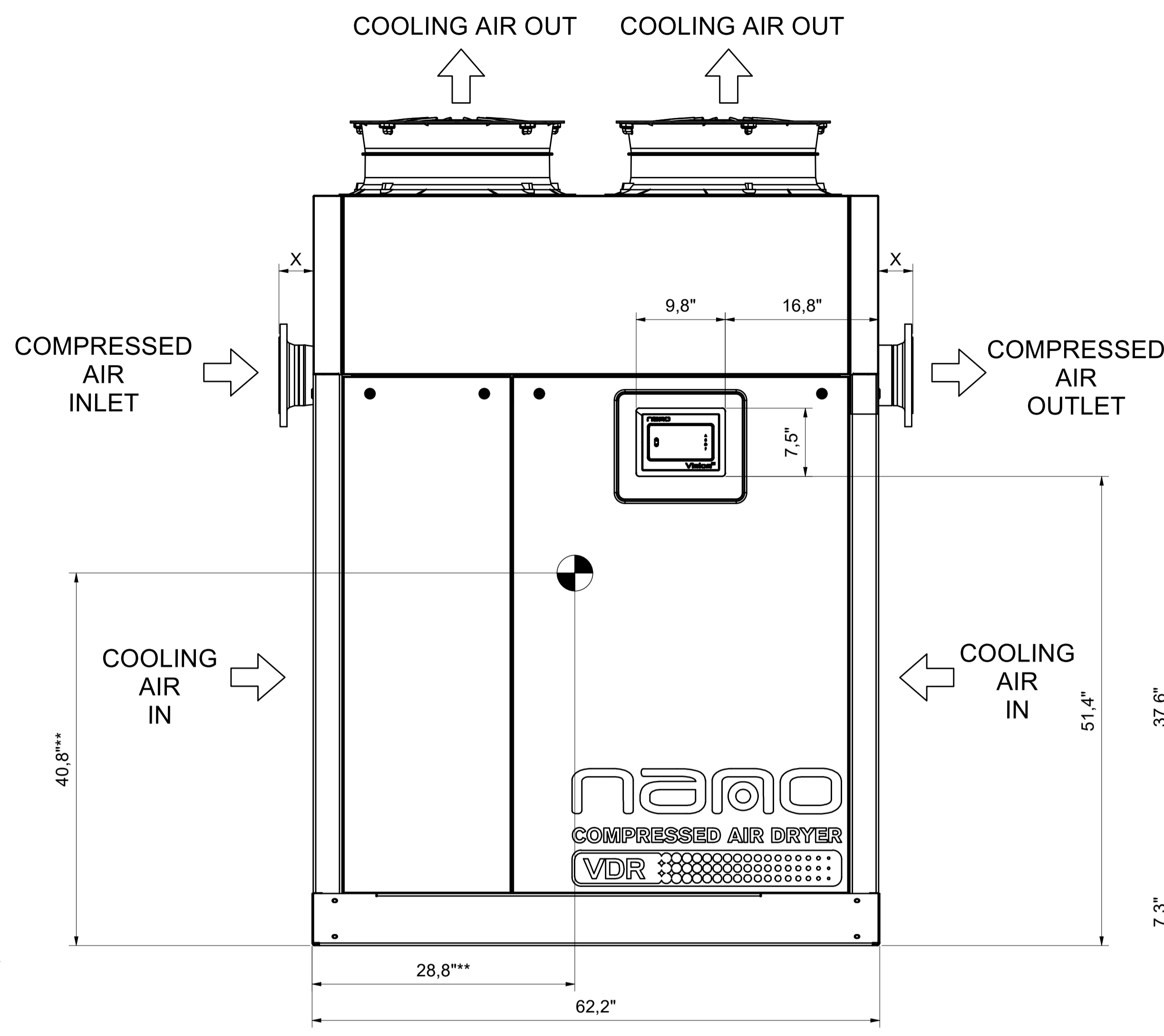


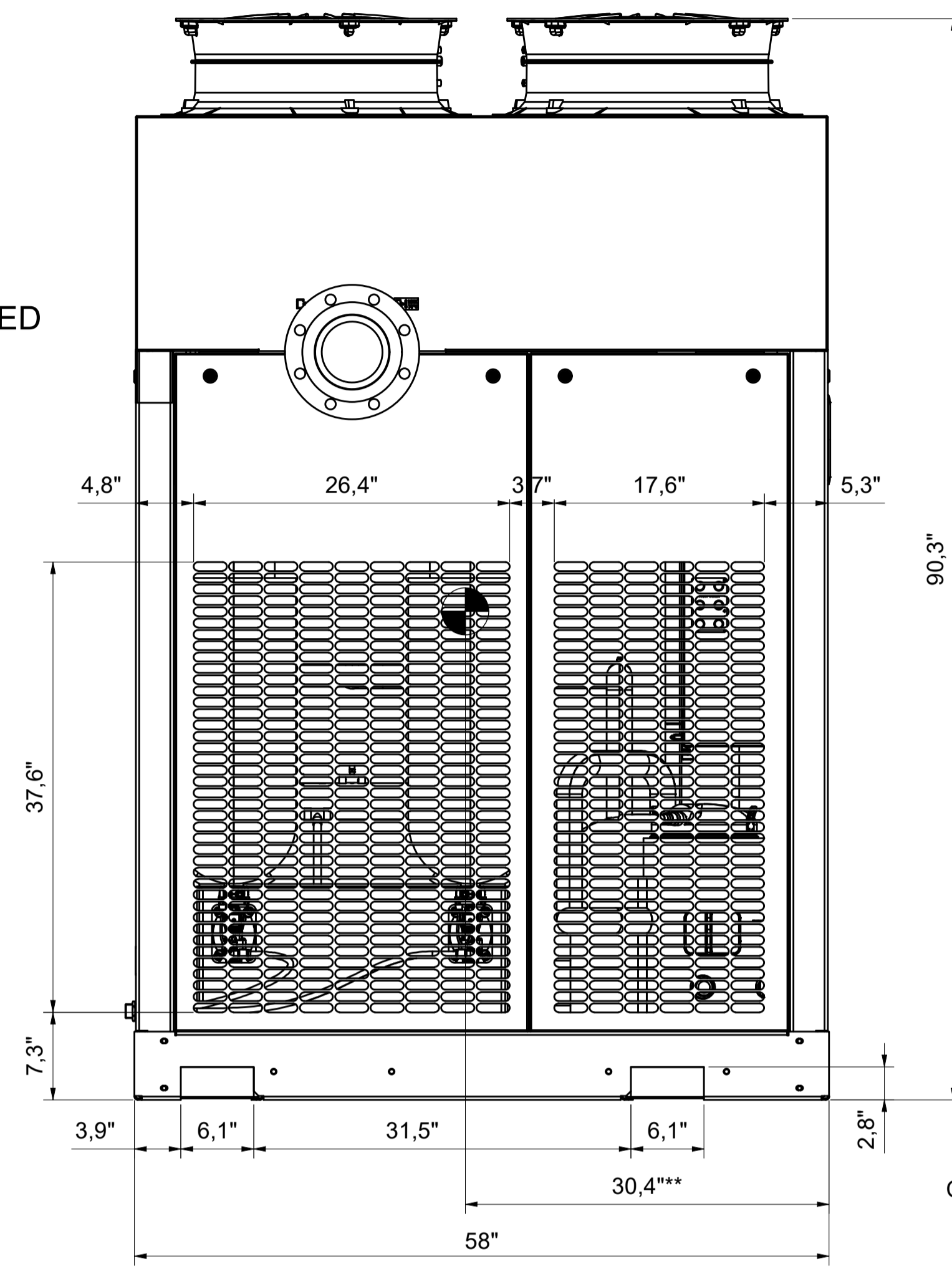
All materials supplied are in compliance with the requirements of the List of Prohibited Substances

VDR 2600-5050
AIRCOOLED

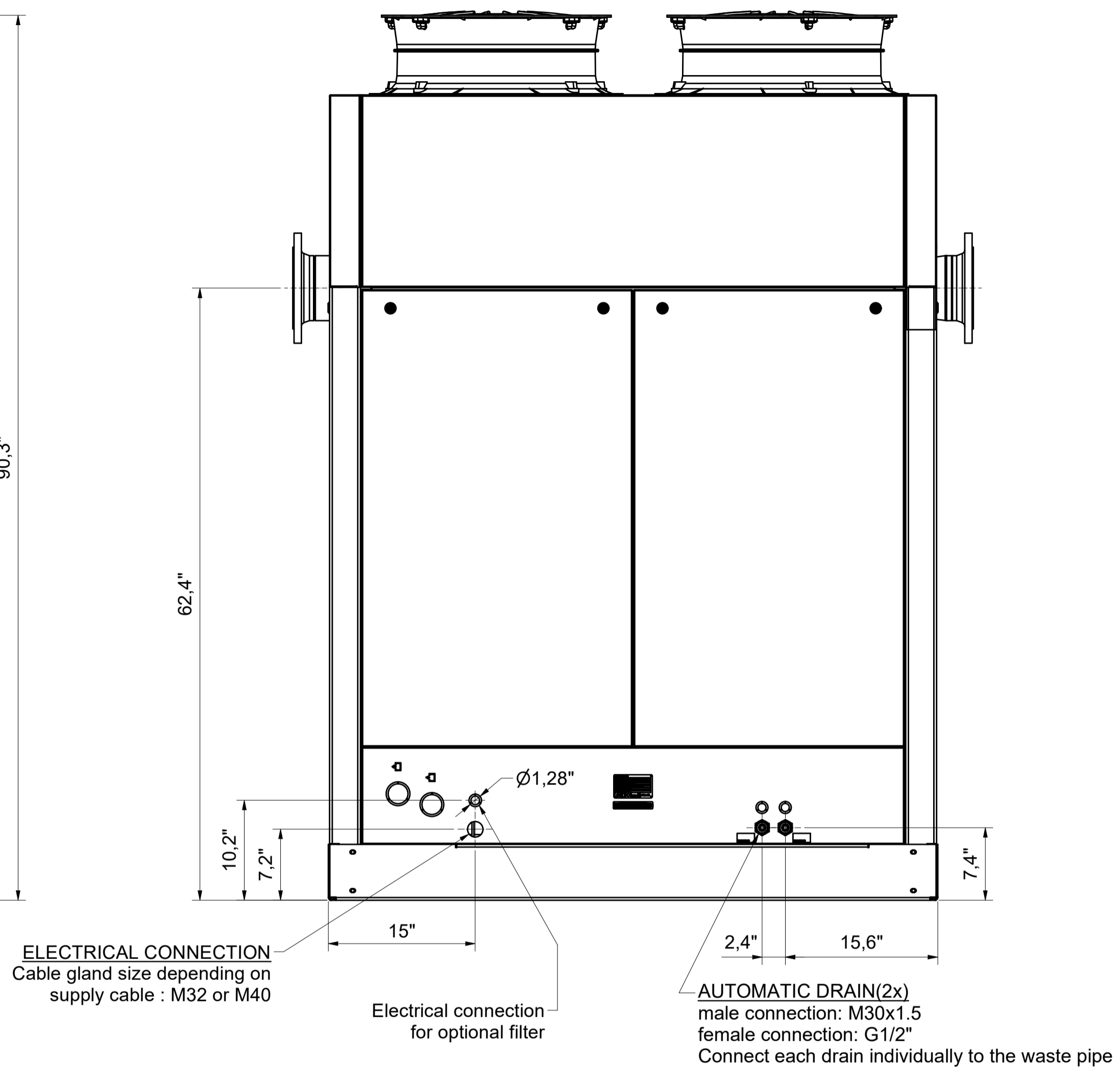
FRONT VIEW



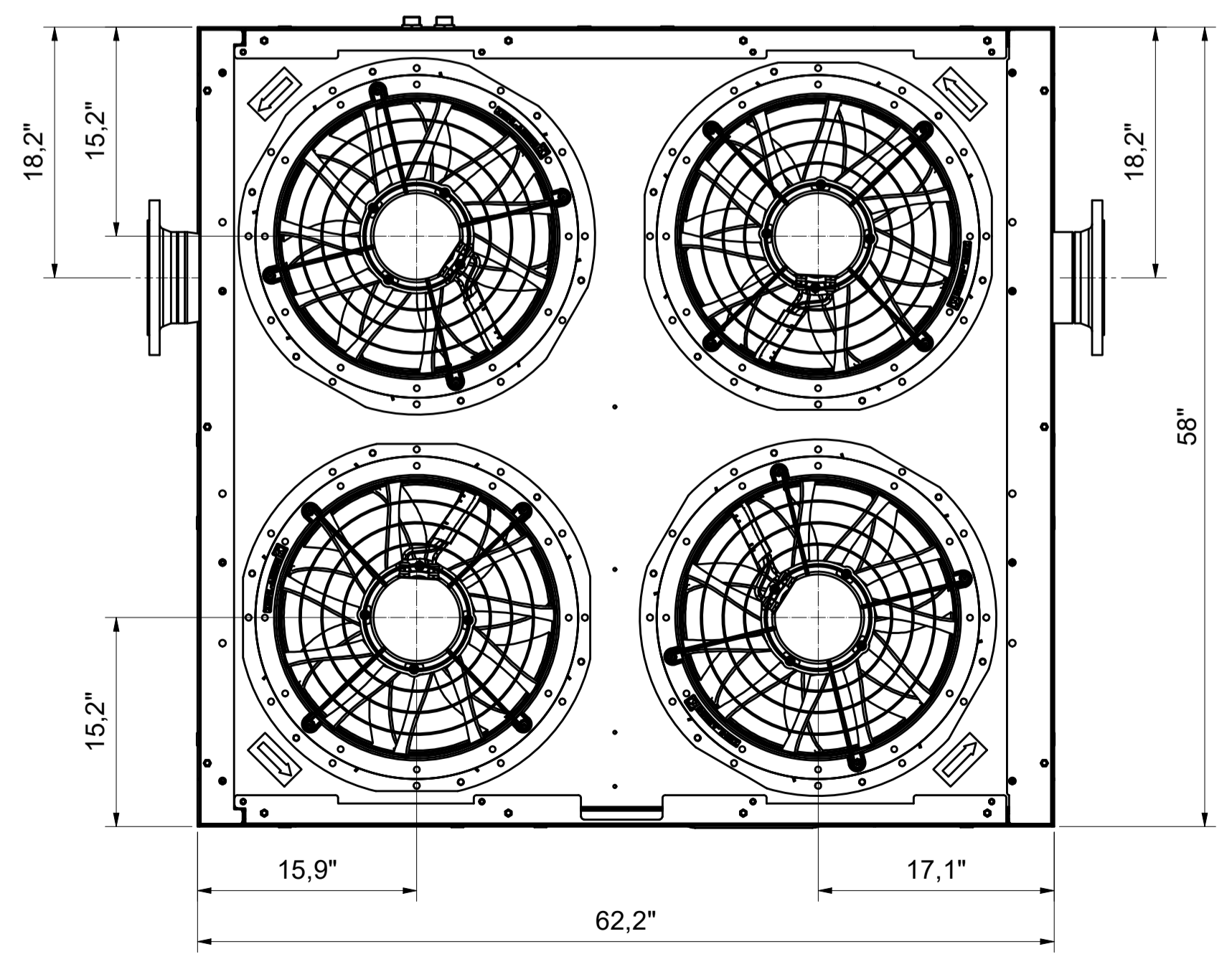
SIDE VIEW



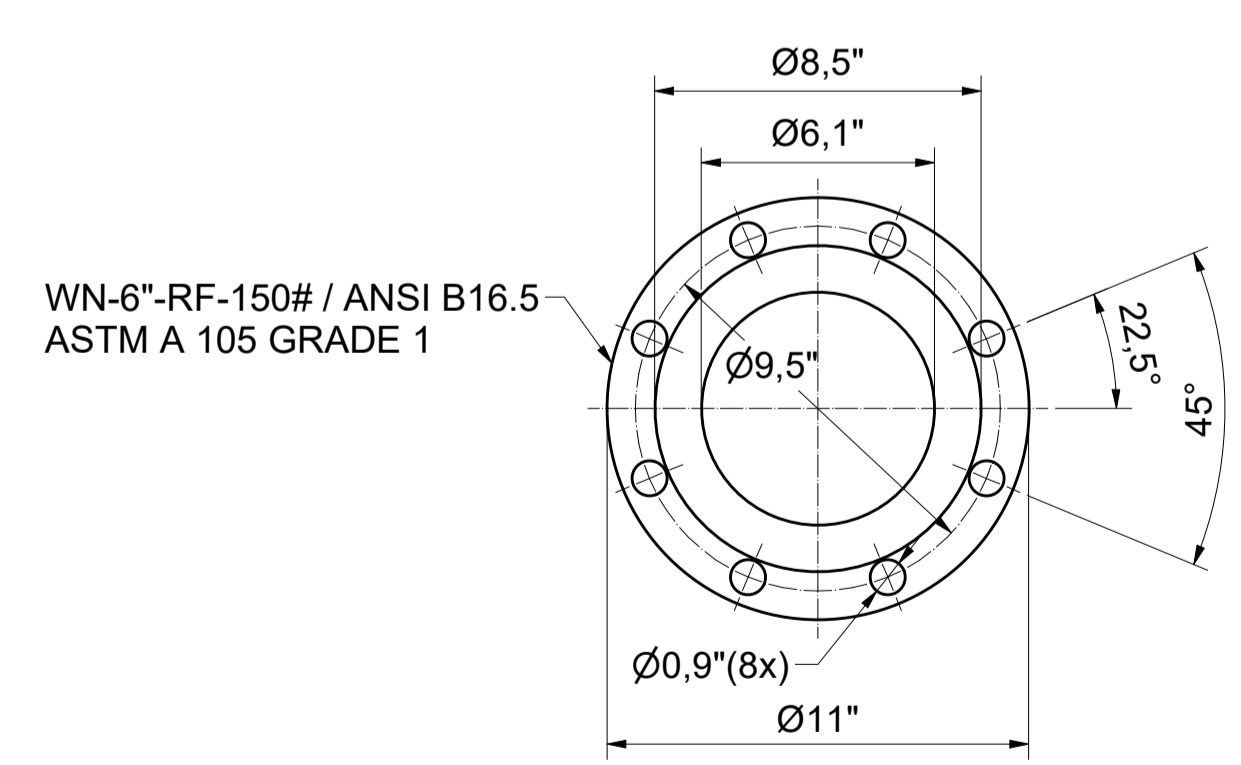
REAR VIEW



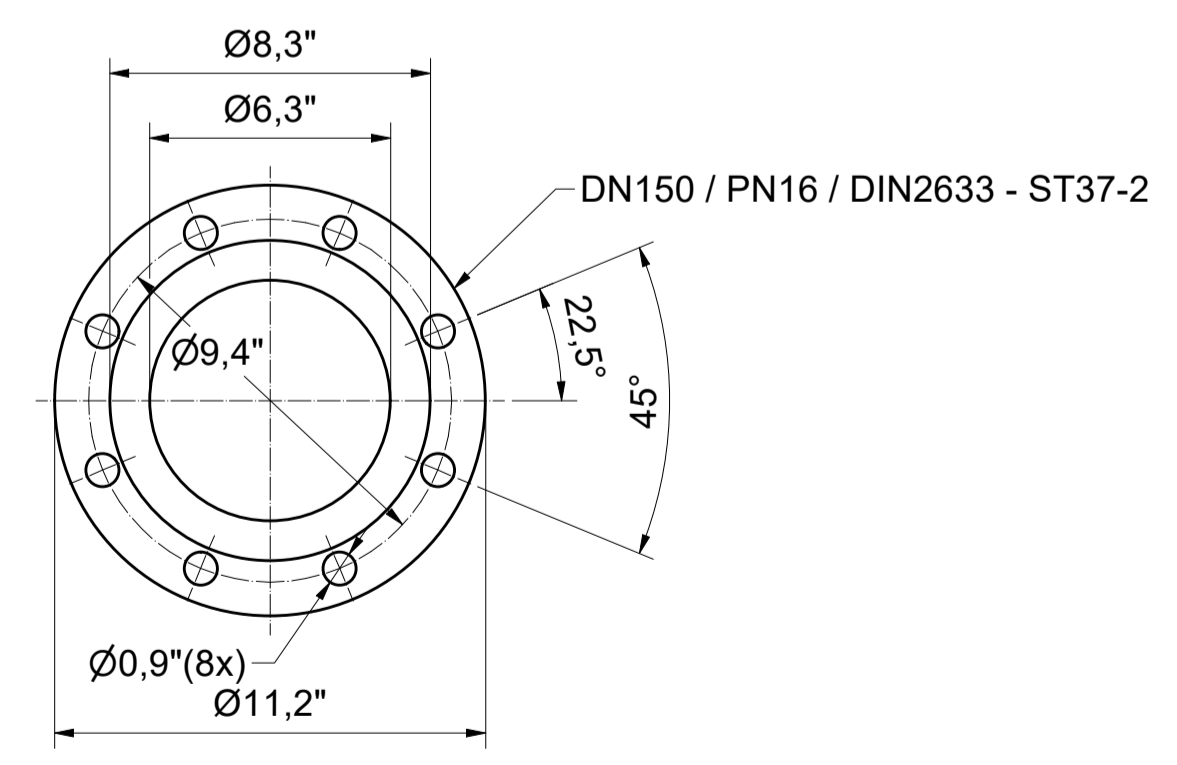
TOP VIEW



ANSI FLANGE (Zinc Plated)
(1 : 5)



DIN FLANGE (Zinc Plated)
(1 : 5)



****CENTER OF GRAVITY (APPROXIMATELY)**

Dryer Type / Ambient Version	Weight	X DIN FLANGE	X ANSI FLANGE	Fans
VDR2600 / 114°F	1940 lbs	3,62"	4,96"	4
VDR3150 / 114°F	2061 lbs	3,62"	4,96"	4
VDR3700 / 114°F	2172 lbs	3,62"	4,96"	4
VDR4200 / 114°F	2183 lbs	3,62"	4,96"	4
VDR5050 / 104°F	2183 lbs	3,62"	4,96"	4

Tolerances, if not indicated, according to: STANDARD CLASS

Name: **DIMENS. DRWG** VDR 2600-5050 Confidentiality Class: Internal

Material: **Not applicable**

Treatment: **Not Applicable**

Scale: 1 : 10 Family: A1 Compare

Drawn by: INEMSI Blank nr. Replaces: APF

Version Drwg: 0 Designation: 1839007680-M1

Status: **Released** Des checked. Blank wt. Kg/Finl wt. Date: 13/12/2021

Sheet 1 / 3

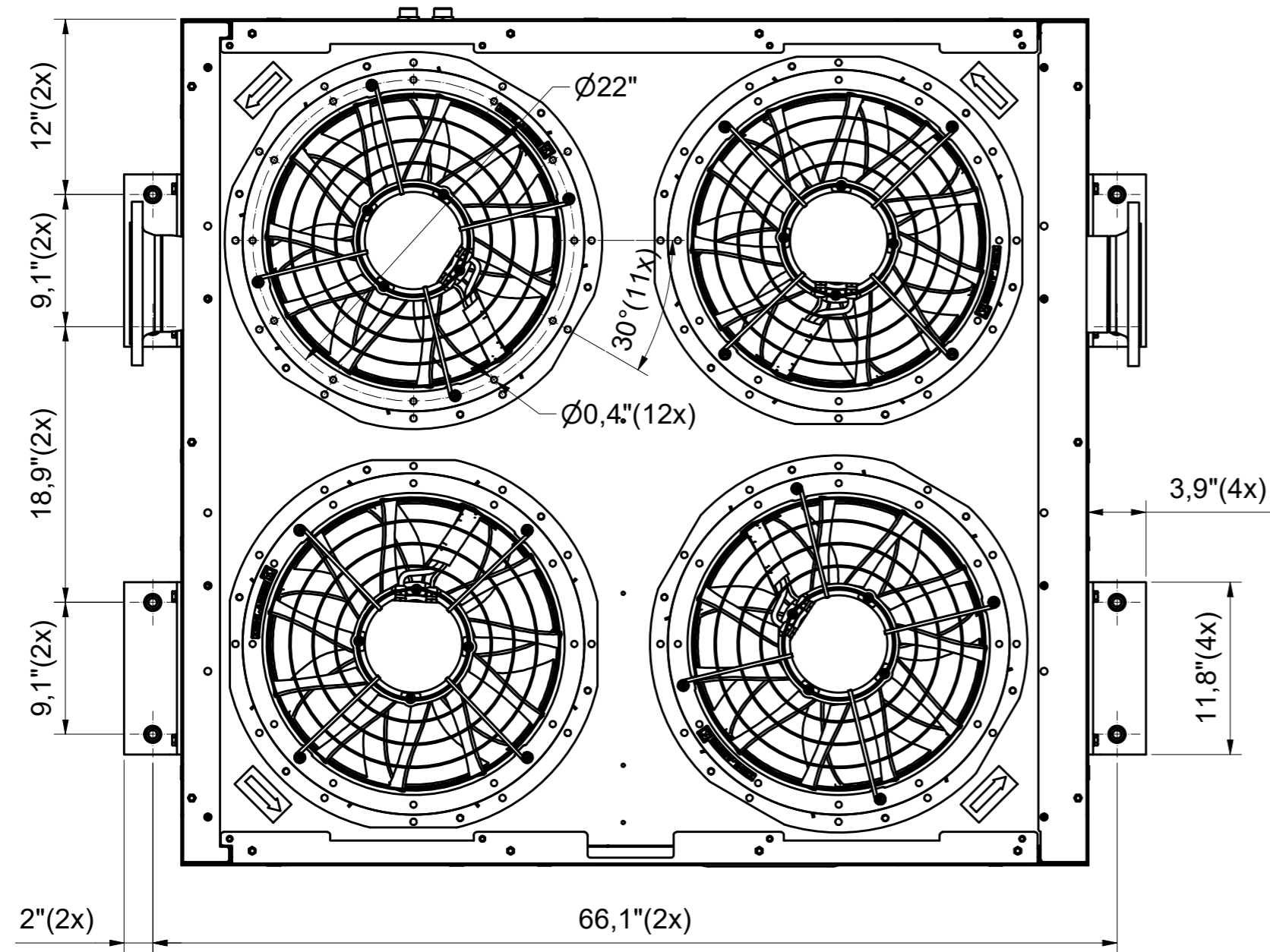
1839007680-02

Ed	Position	Modified from	Date	Intr./Appd.	User Agent
1			25/02/2022		User Agent

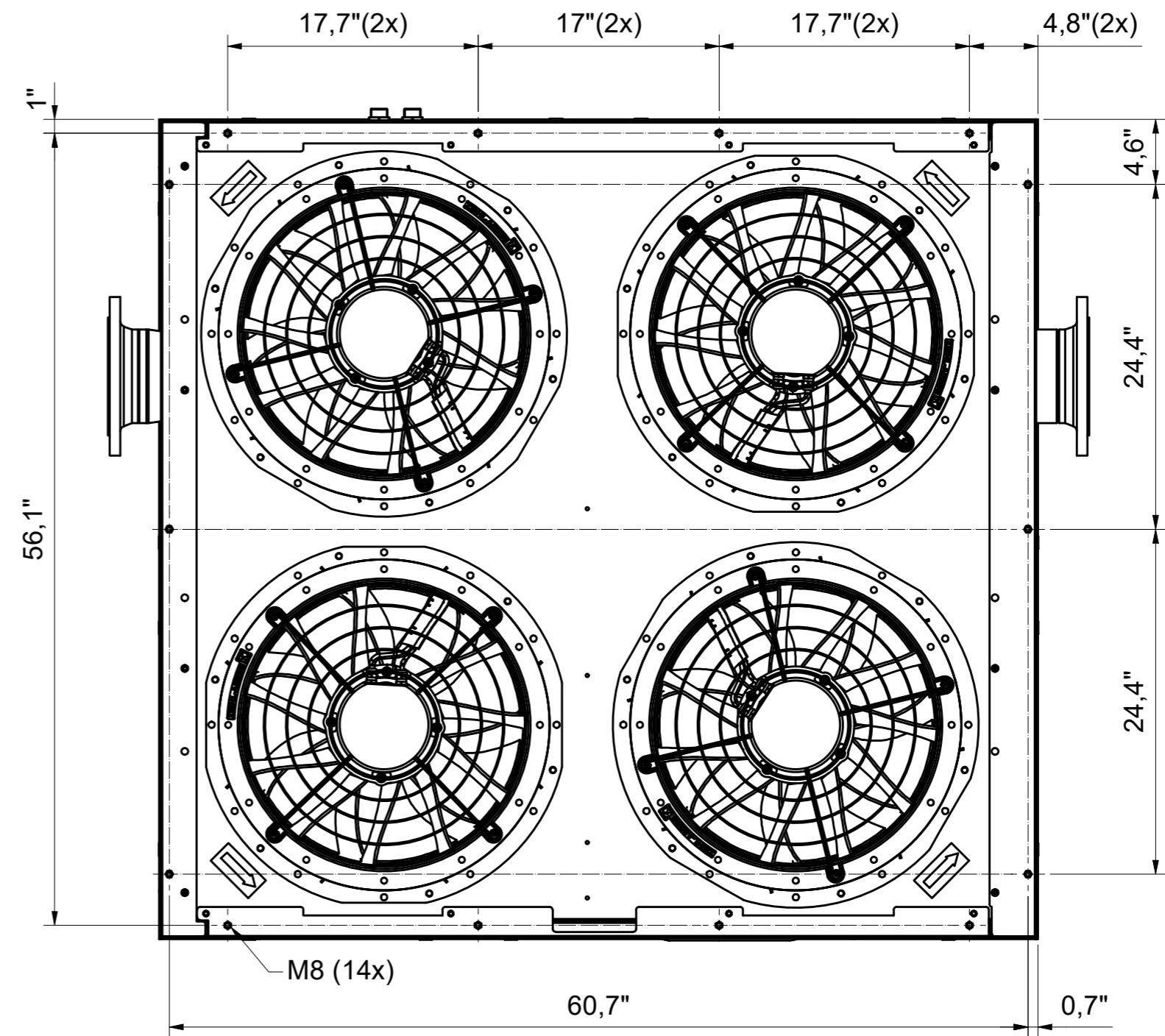
CONFIDENTIAL: This document is our property and shall not be used without our prior permission. No part of this document may be reproduced, stored in a retrieval system, or transmitted in any form or by any means, electronic, mechanical, photocopying, recording, or by any information storage and retrieval system, without the prior written permission of the company.

All materials supplied are in compliance with the requirements of the List of Prohibited Substances

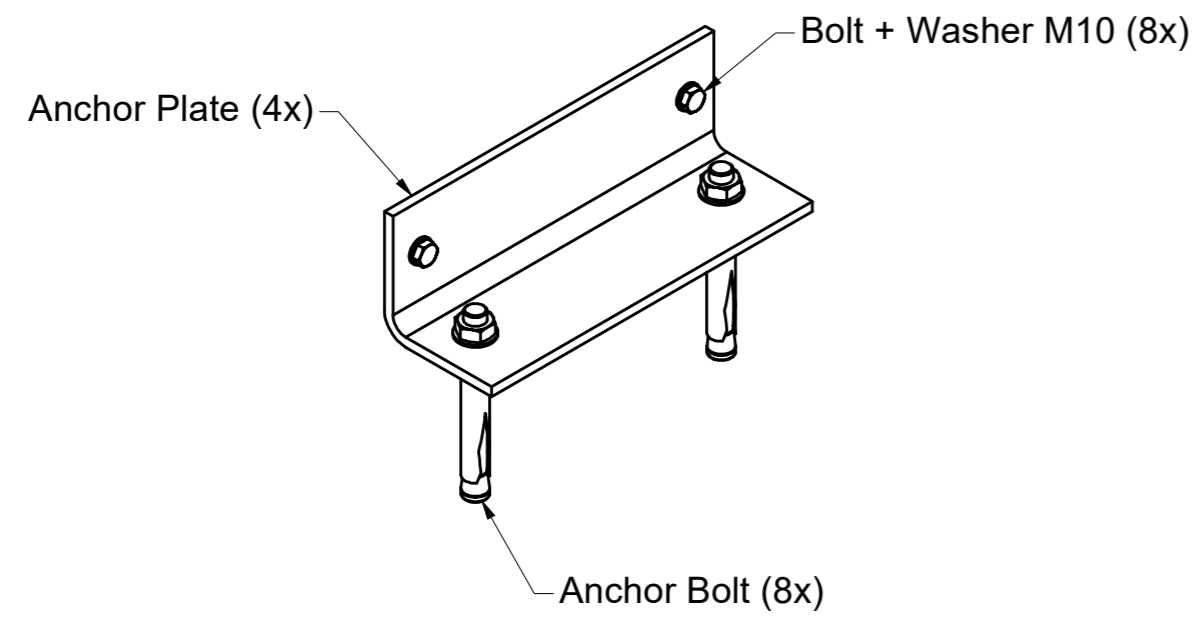
ANCHOR PADS



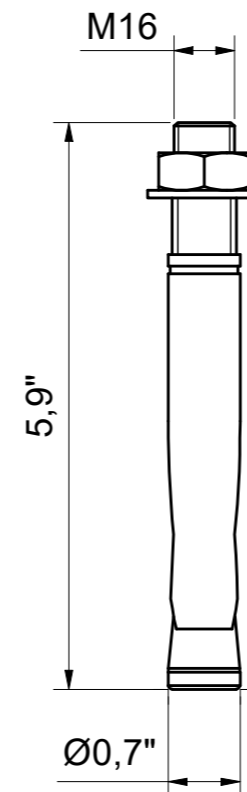
DUCTING CONNECTIONS



ANCHOR KIT (1 : 5)



ANCHOR BOLT (1 : 2)



CONFIDENTIAL:
This document is our property and shall not without our permission be altered, copied, used for manufacturing or communicated to any other person or company.

1			25/02/2022	User Agent
Ed	Position	Modified from	Date	Intr./Appd.

1839007680-M1	1
Parent 3D model	Ed. Version 3D

Tolerances, if not indicated, according to:									
STANDARD CLASS									
Name DIMENS. DRWG					VDR 2600-5050				
Material Not applicable					Confidentiality Class acc. to 1102 K Internal				
Treatment Not Applicable					INV				
Scale 1 : 10			Family			A2 Compare			Drawing owner
Drawn by INEMSI			Blank nr.			Replaces			APF
STATUS		Version Drwg		Blank wt		Kg		Fini wt.	
Released		Des checked.		Prod checked.		Approved.		Date 13/12/2021	
					Designation				
					Sheet 3 / 3				
1839007680-02									