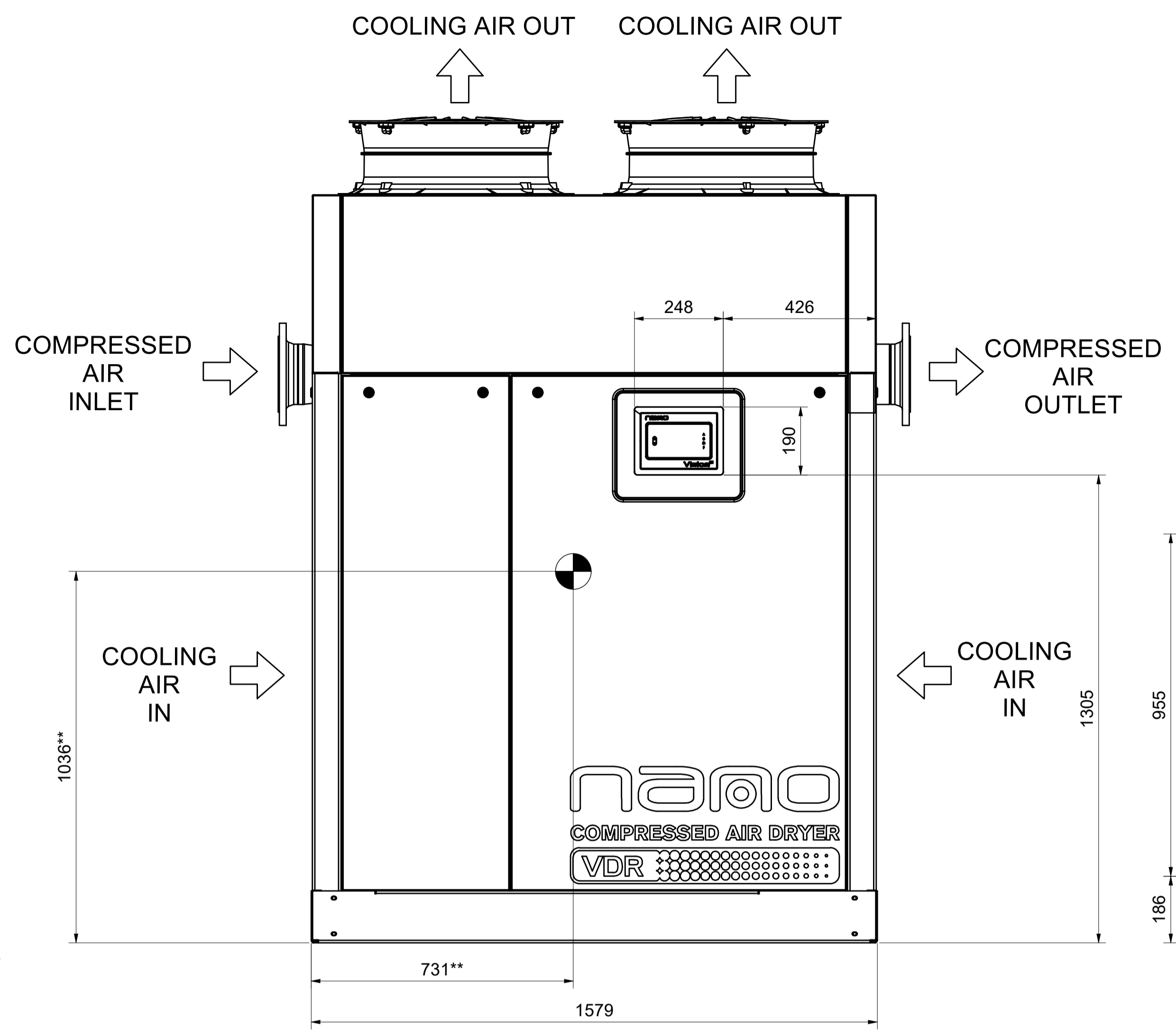


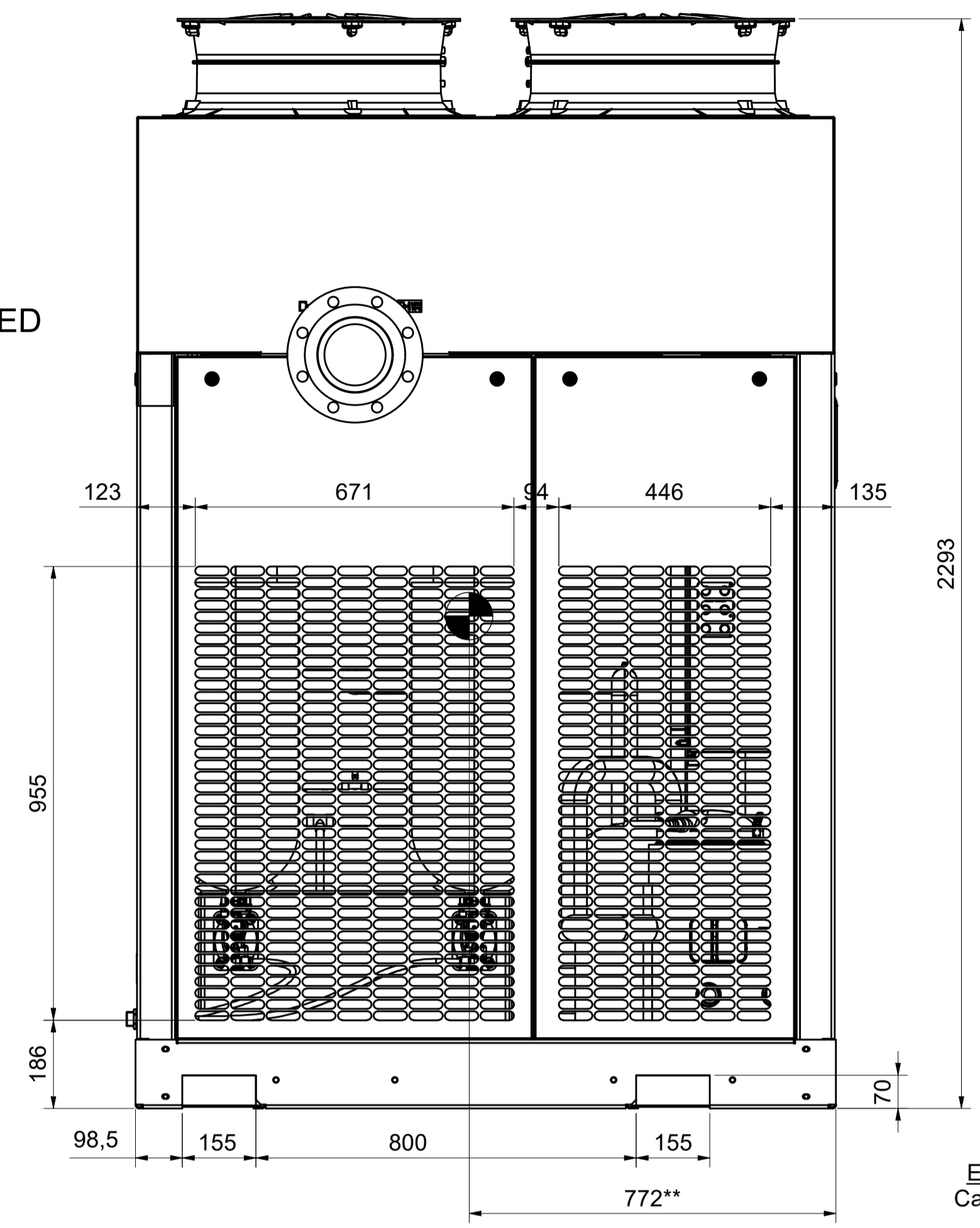
All materials supplied are in compliance with the requirements of the List of Prohibited Substances

VDR 2600-5050
AIRCOOLED

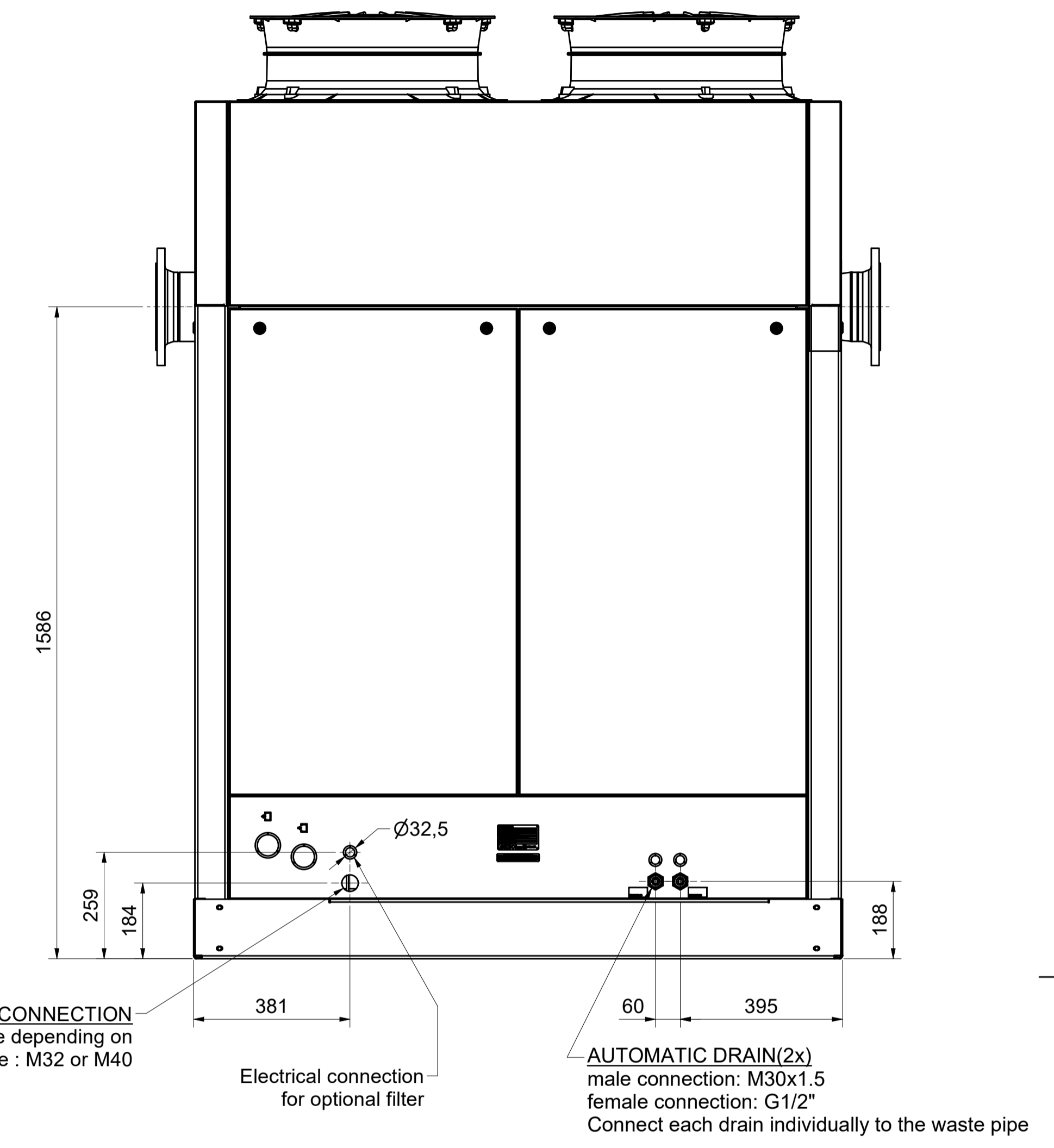
FRONT VIEW



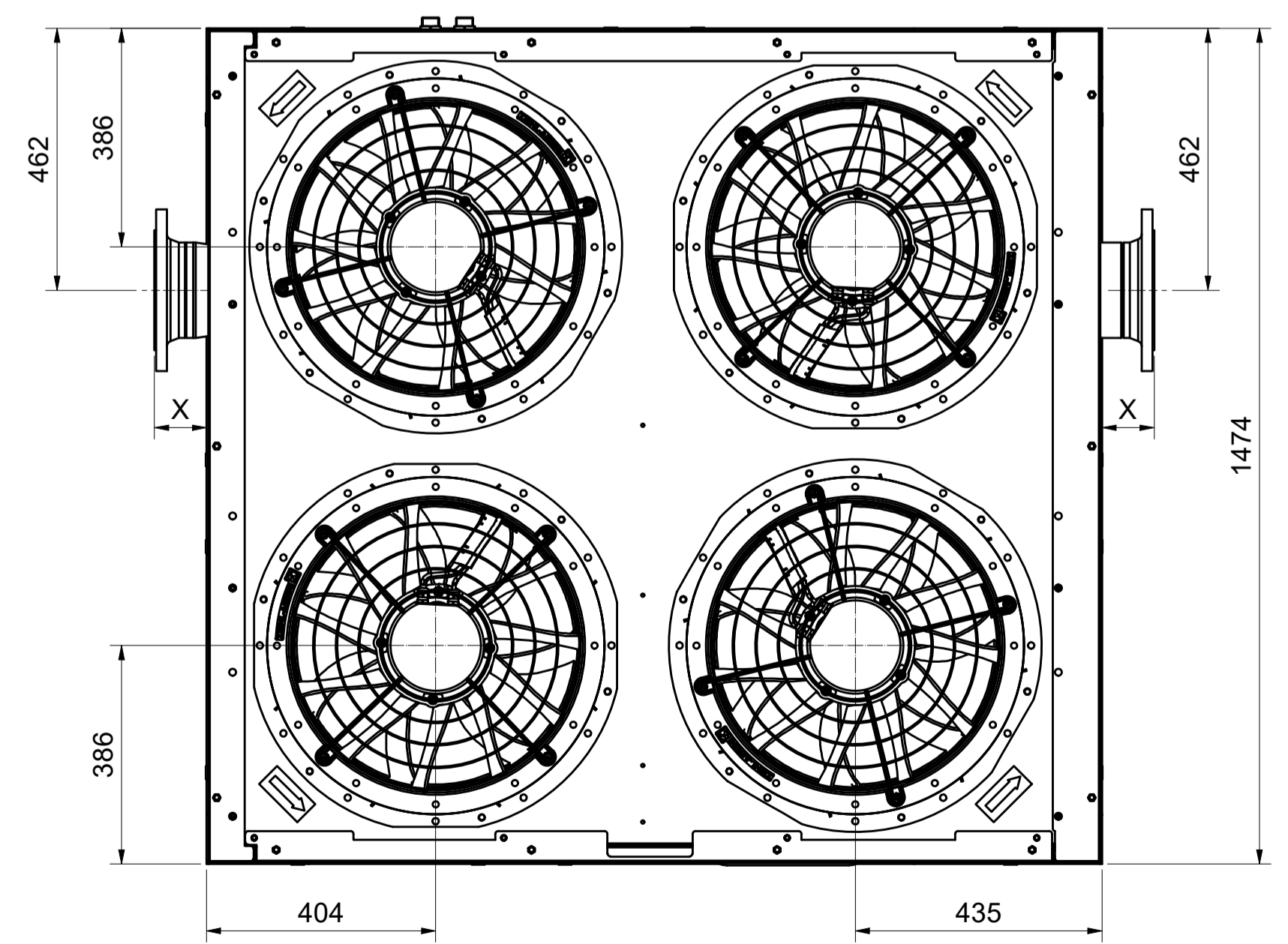
SIDE VIEW



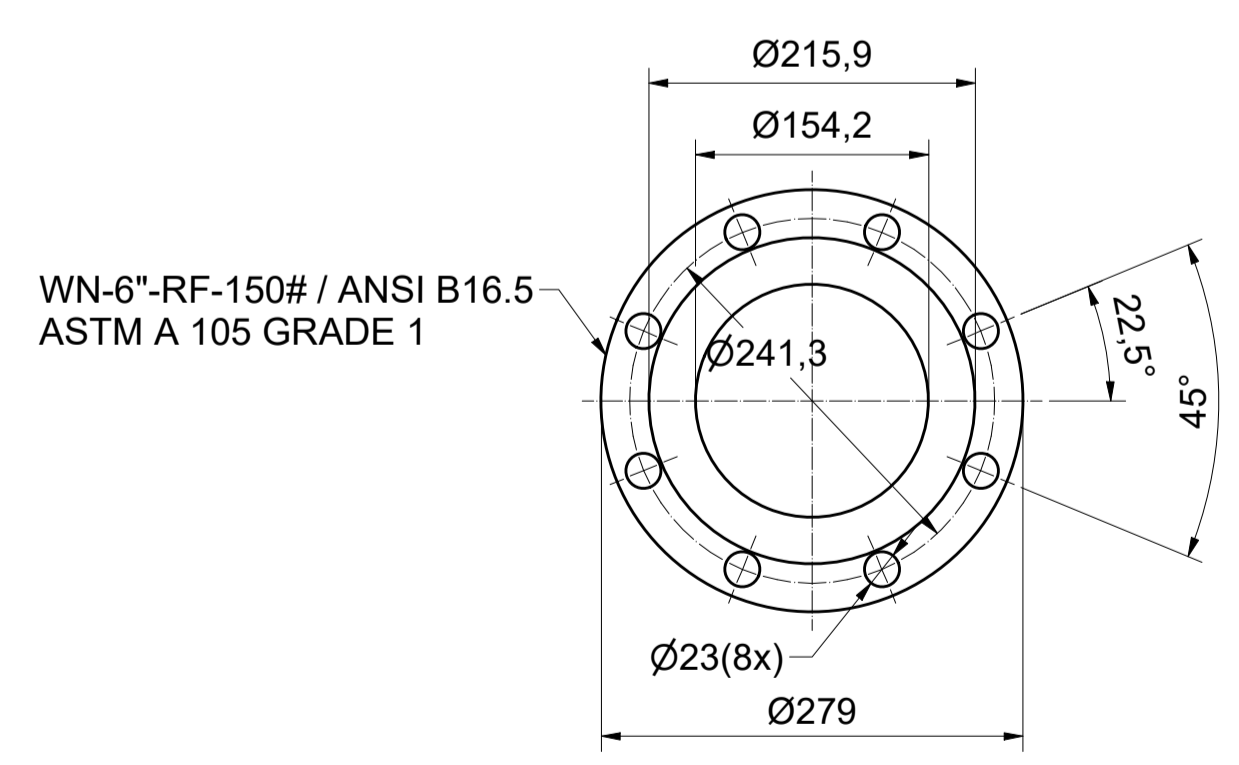
REAR VIEW



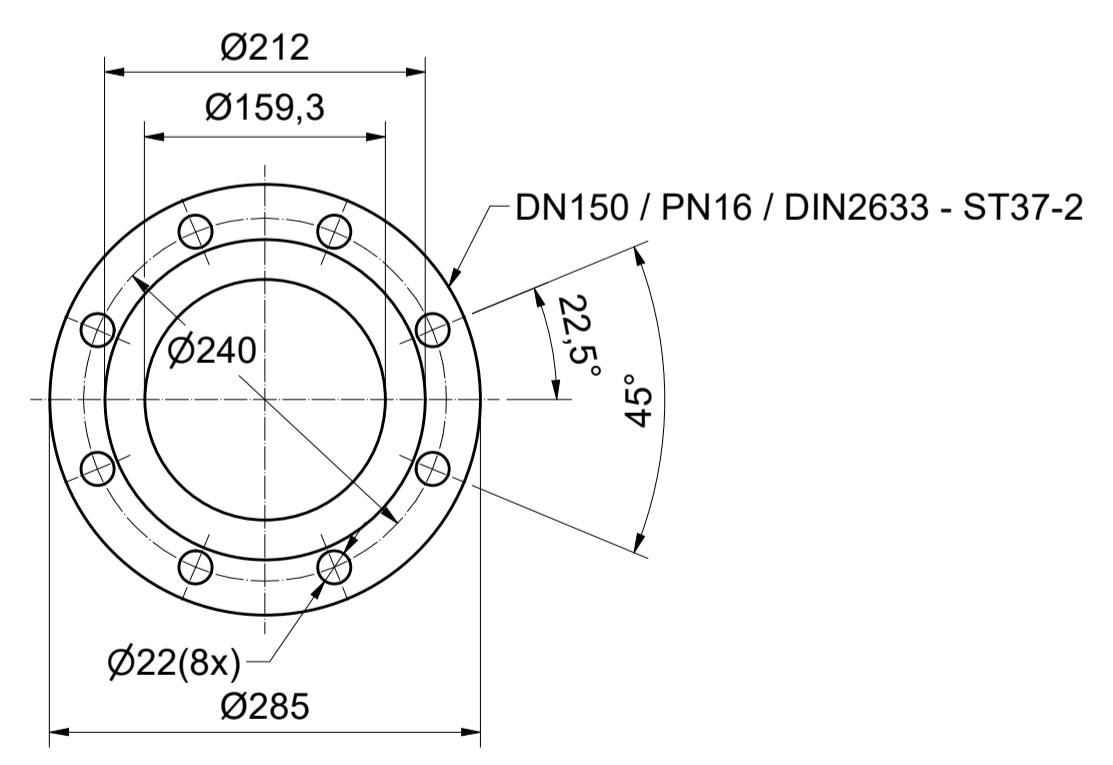
TOP VIEW



ANSI FLANGE (Zinc Plated)
(1 : 5)



DIN FLANGE (Zinc Plated)
(1 : 5)



**CENTER OF GRAVITY (APPROXIMATELY)

| Dryer Type / Ambient Version | Weight | X DIN FLANGE | X ANSI FLANGE | Fans |
|------------------------------|--------|--------------|---------------|------|
| VDR2600 / 46°C | 880 kg | 92 mm | 126 mm | 4 |
| VDR3150 / 46°C | 935 kg | 92 mm | 126 mm | 4 |
| VDR3700 / 46°C | 985 kg | 92 mm | 126 mm | 4 |
| VDR4200 / 46°C | 990 kg | 92 mm | 126 mm | 4 |
| VDR5050 / 40°C | 990 kg | 92 mm | 126 mm | 4 |

Tolerances, if not indicated, according to: STANDARD CLASS

Name: DIMENS. DRWG VDR 2600-5050 Confidentiality Class: acc. to 1102 K Internal

Material: Not applicable Internal

Treatment: Not Applicable INV

Scale: 1 : 10 Family: A1 Compare

Drawn by: INEMSI Blank nr. Replaces: APF

Version Drwg: STATUS

Des checked. Blank wt. Kg/Finl wt. 4034.251 kg Designation

Prod checked. Approved. Date: 13/12/2021

Released

1839007680-M1 1

Parent 3D model Ed. -Version 3D

1839007680-01

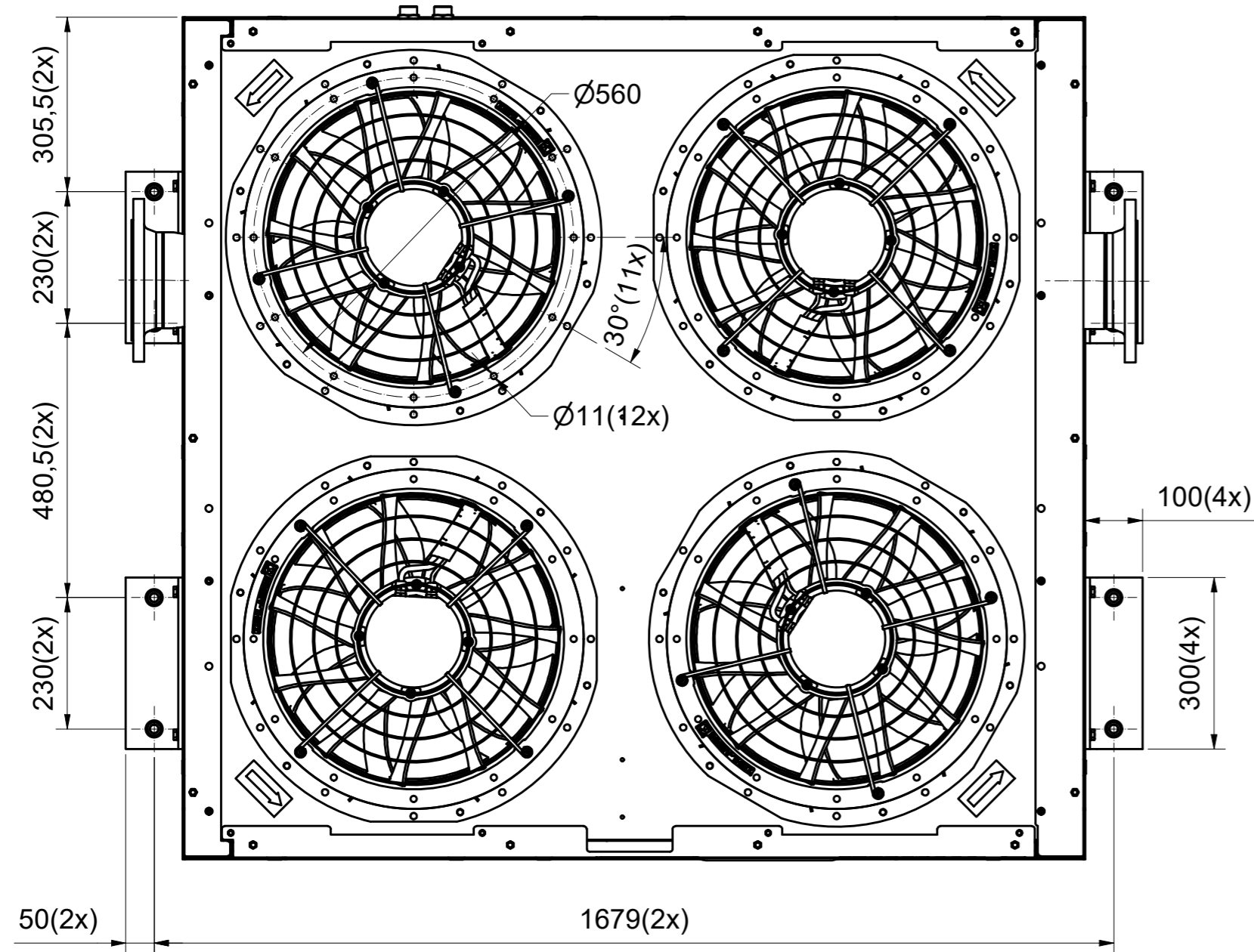
Sheet 1 / 3

CONFIDENTIAL: This document is our property and shall not be used without our prior permission. No part of this document may be reproduced, stored in a retrieval system, or transmitted in any form or by any means, electronic, mechanical, photocopying, recording, or by any information storage and retrieval system, without the prior written permission of INEMSI.

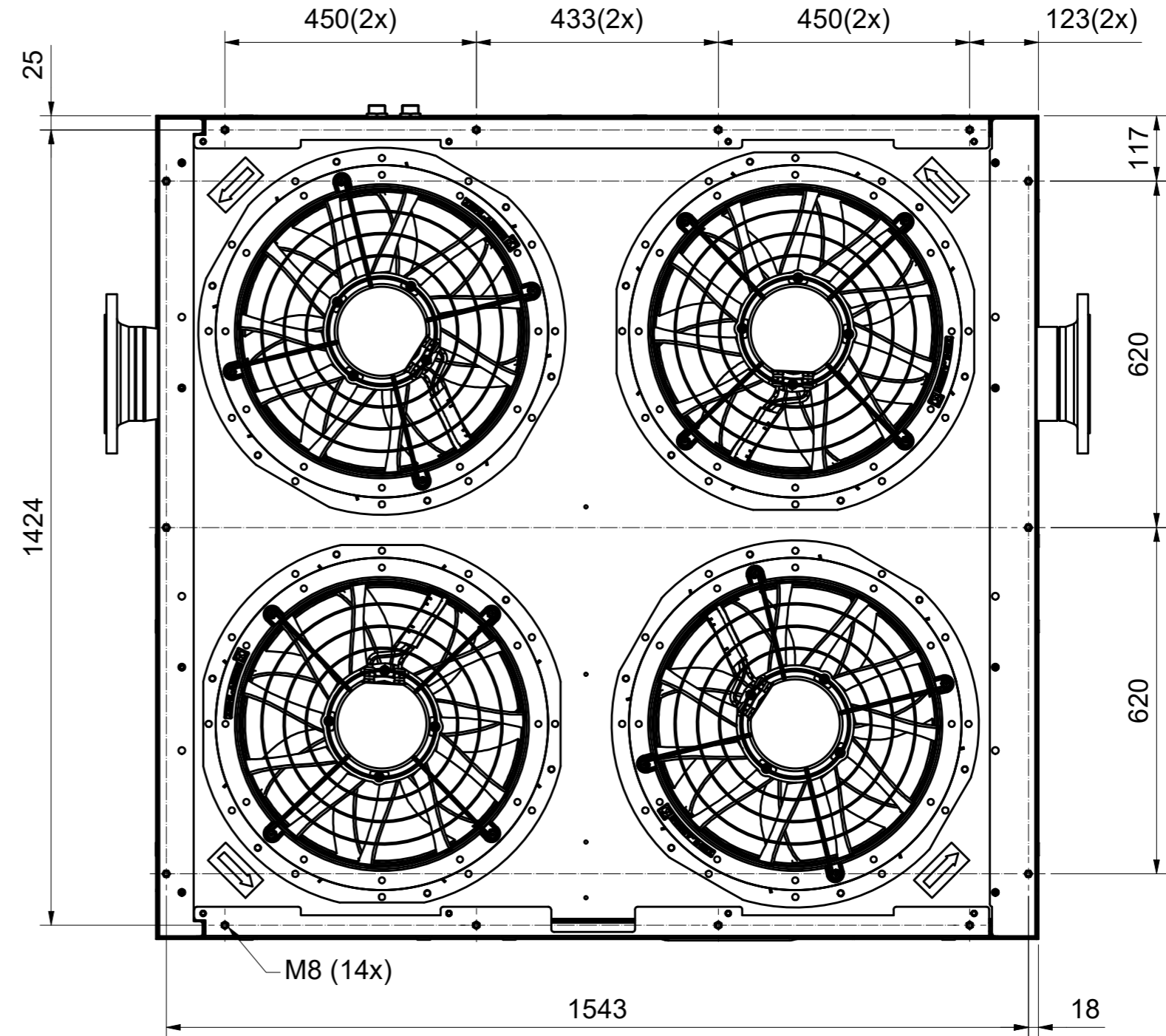
| Ed | Position | Modified from | Date | Intr./Appd. | User Agent |
|----|----------|---------------|------------|-------------|------------|
| 1 | | | 25/02/2022 | | User Agent |

All materials supplied are in compliance with the requirements of the List of Prohibited Substances

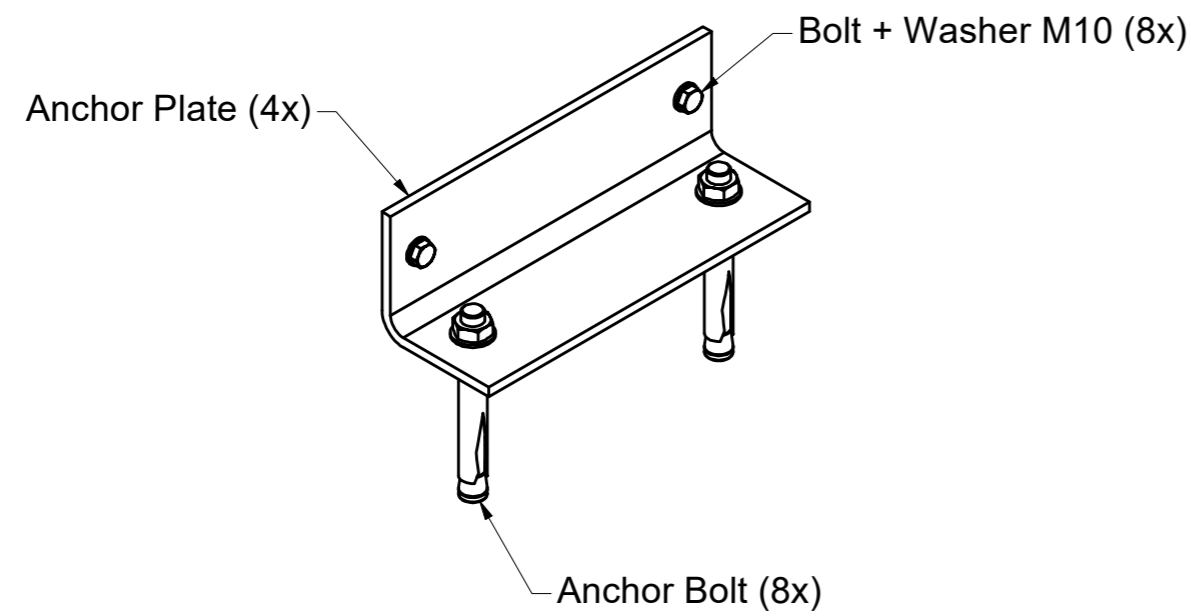
ANCHOR PADS



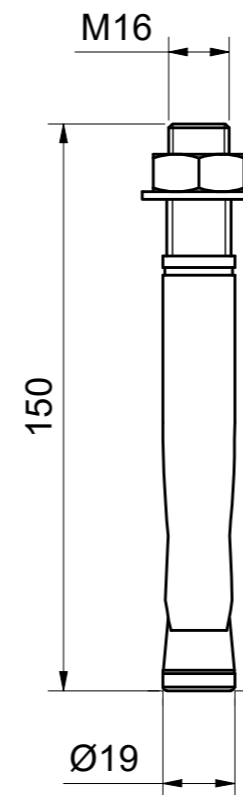
DUCTING CONNECTIONS



ANCHOR KIT (1:5)



ANCHOR BOLT (1:2)



CONFIDENTIAL:
This document is our property and shall not without our permission be altered, copied, used for manufacturing or communicated to any other person or company.

| | | | | |
|----|----------|---------------|------------|-------------|
| 1 | | | 25/02/2022 | User Agent |
| Ed | Position | Modified from | Date | Intr./Appd. |

| | |
|-----------------|----------------|
| 1839007680-M1 | 1 |
| Parent 3D model | Ed. Version 3D |

| | | | | | | | |
|---|----------------|----------------|---------------|----------|--------------------------------------|---------------|----------------------|
| Tolerances, if not indicated, according to: | | | | | | | |
| STANDARD CLASS | | | | | | | |
| Name | DIMENS. DRWG | | VDR 2600-5050 | | Confidentiality Class acc. to 1102 K | | |
| Material | Not applicable | | | | Internal | | |
| Treatment | Not Applicable | | | | INV | | Drawing owner APF |
| Scale | | 1:10 | Family | | A2 Compare | | |
| Drawn by | | INEMSI | Blank nr. | | Replaces | | |
| Version Drwg | | Blank wt | Kg | Fini wt. | 4034.251 kg | Designation | |
| Des checked. | | Prod checked. | Approved. | Date | 13/12/2021 | | Sheet 3 / 3 |
| Parent 3D model | | Ed. Version 3D | | Released | | 1839007680-01 | |