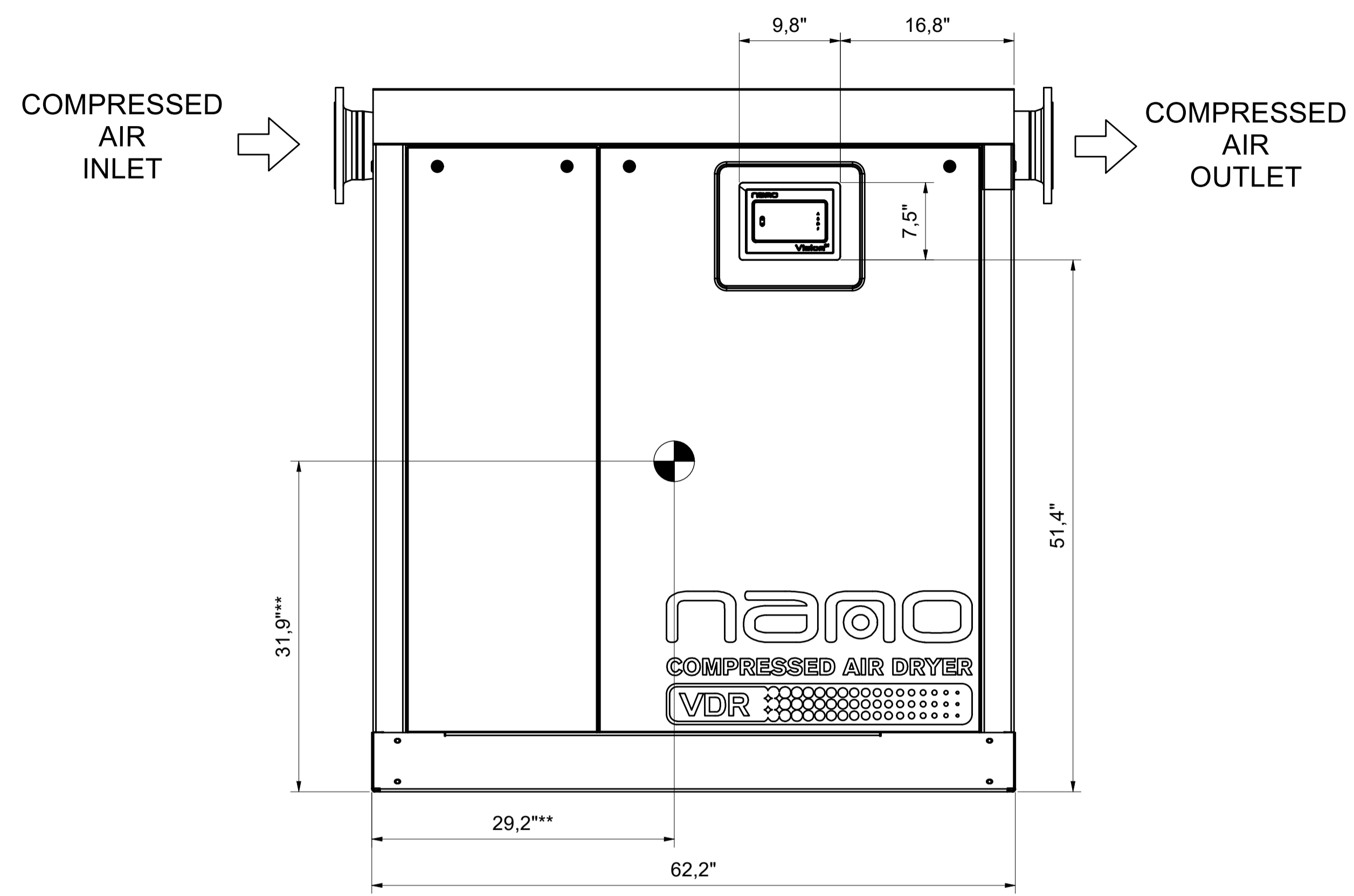


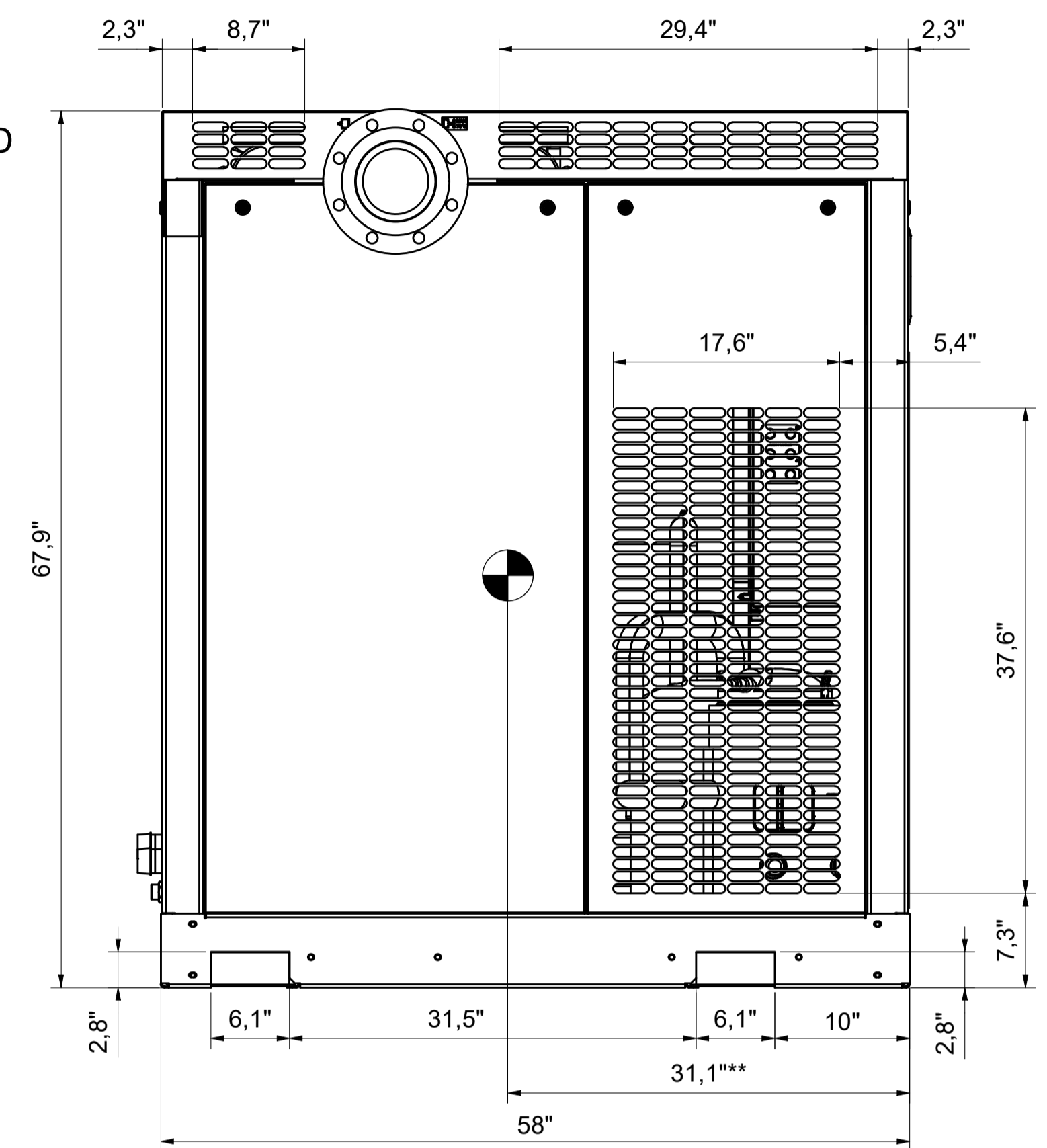
All materials supplied are in compliance with the requirements of the List of Prohibited Substances

**VDR 2600-5050**  
WATERCOOLED

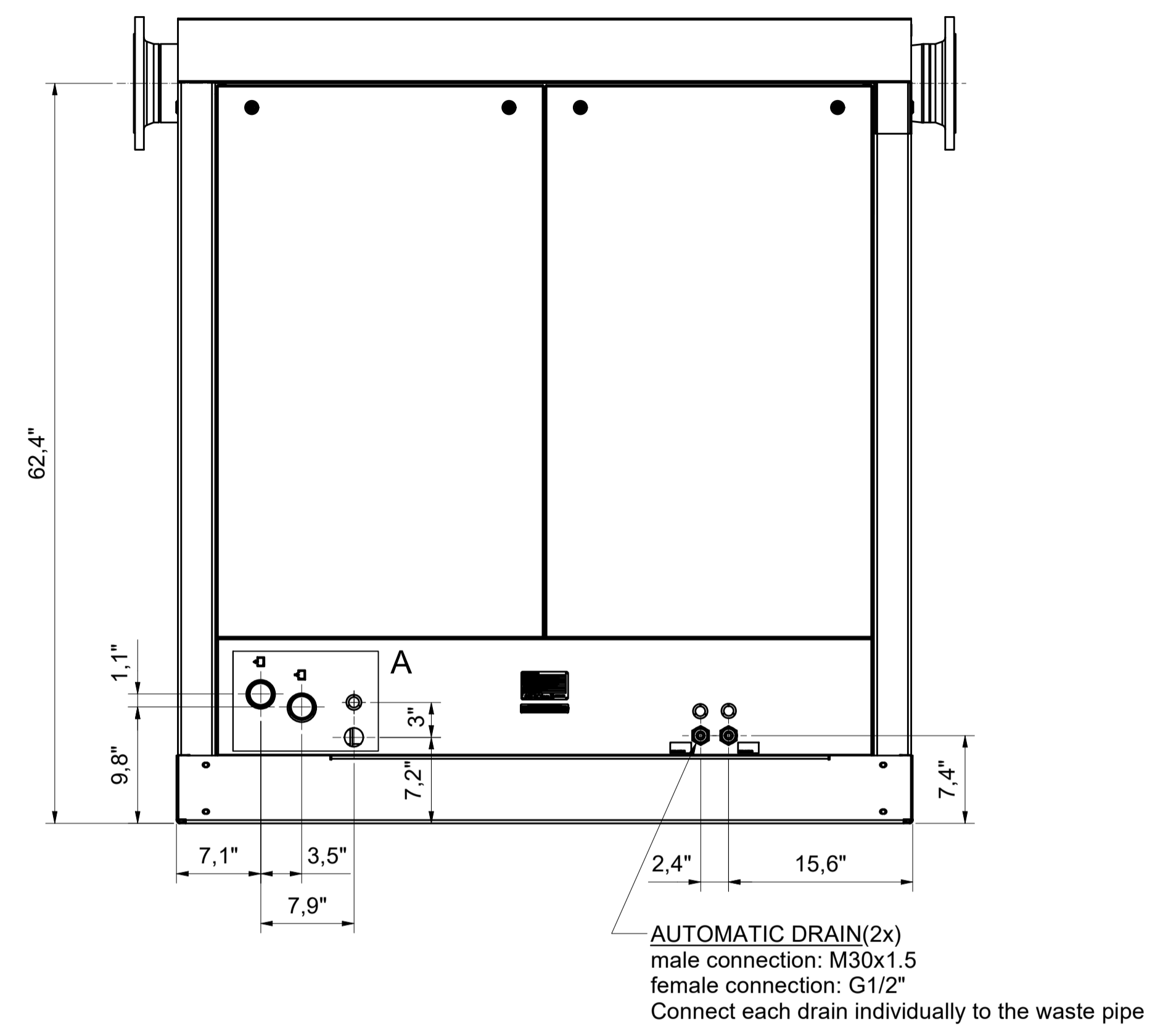
**FRONT VIEW**



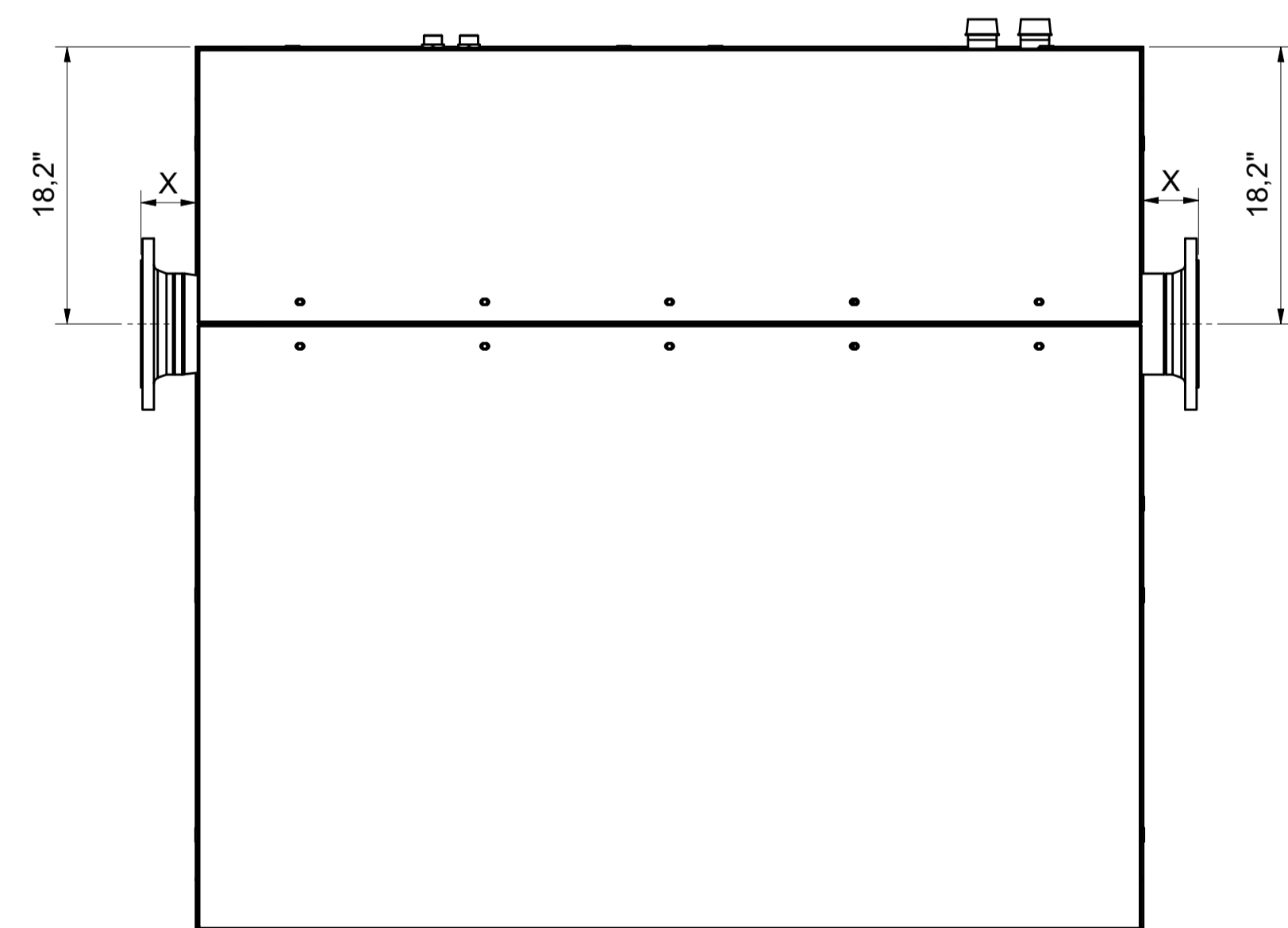
**SIDE VIEW**



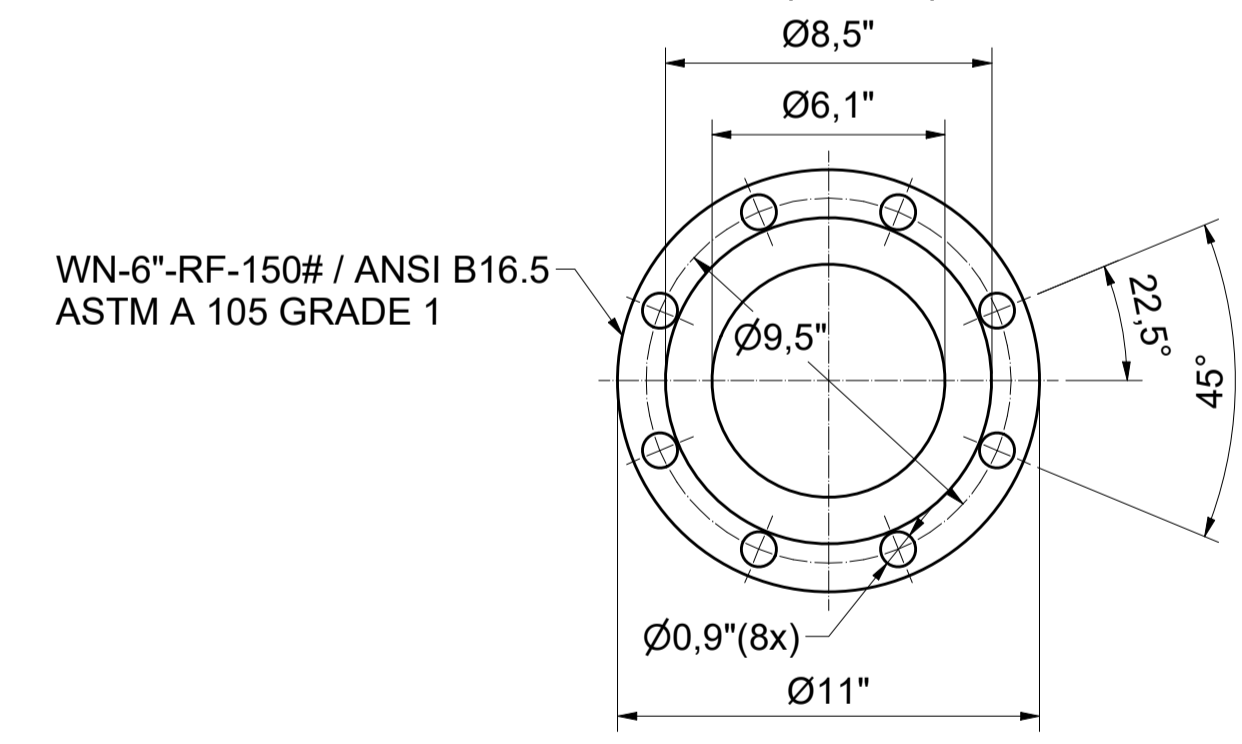
**REAR VIEW**



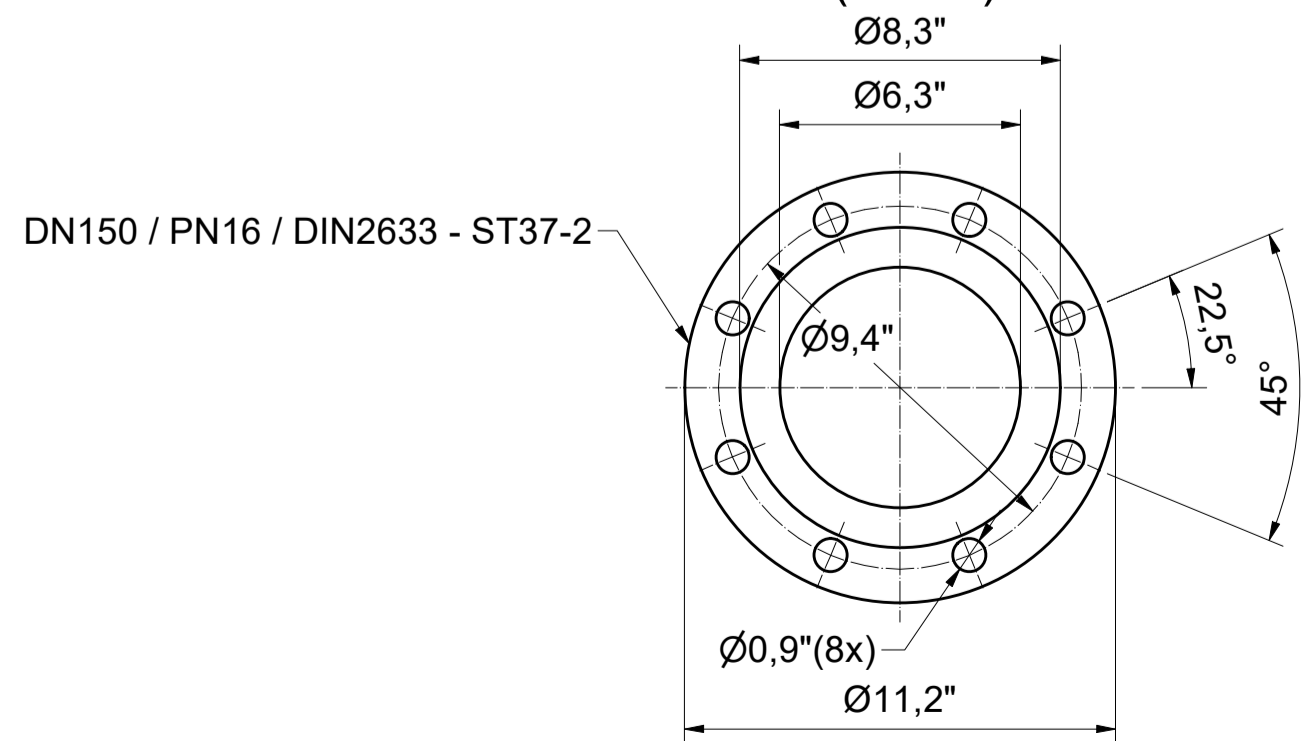
**TOP VIEW**



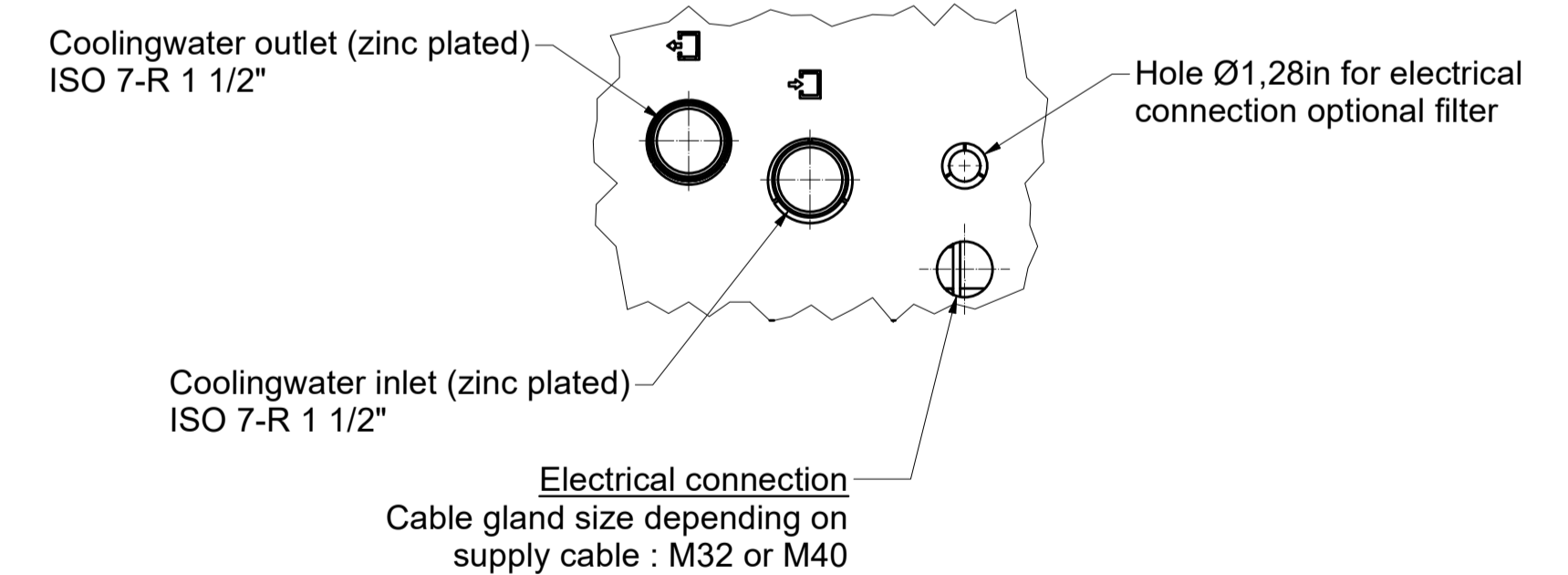
**ANSI FLANGE (Zinc Plated)**  
(1 : 5)



**DIN FLANGE (Zinc Plated)**  
(1 : 5)



**Water Connections**  
A (1 : 5)



\*\*CENTER OF GRAVITY (APPROXIMATELY)

Dryer Type / Ambient Version	Weight	X DIN FLANGE	X ANSI FLANGE
VDR2600 / 114°F	1764 lbs	3,62"	4,96"
VDR3150 / 114°F	1797 lbs	3,62"	4,96"
VDR3700 / 114°F	1885 lbs	3,62"	4,96"
VDR4200 / 114°F	1907 lbs	3,62"	4,96"
VDR5050 / 114°F	1918 lbs	3,62"	4,96"

Tolerances, if not indicated, according to: STANDARD CLASS

Name: DIMENS. DRWG VDR 2600-5050 Confidentiality Class: acc. to 1102 K Internal

Material: Not applicable Internal

Treatment: Not Applicable INV

Scale: 1 : 10 Family: A1 Compare

Drawn by: INEMSI Blank nr. Replaces: APF

Version Drwg: 0 Designation: 0

STATUS: Released Des. checked. Blank wt. Kg/Finl wt. Date: 13/12/2021

Parent 3D model: 1839007680-M1 Ed. Version 3D: 1

1839007680-02

Ed	Position	Modified from	Date	Intr./Appd.	User Agent
1			25/02/2022		User Agent

CONFIDENTIAL: This document is our property and shall not be used without our prior permission. All rights reserved. Reproduction or distribution of this document is prohibited without our prior permission.