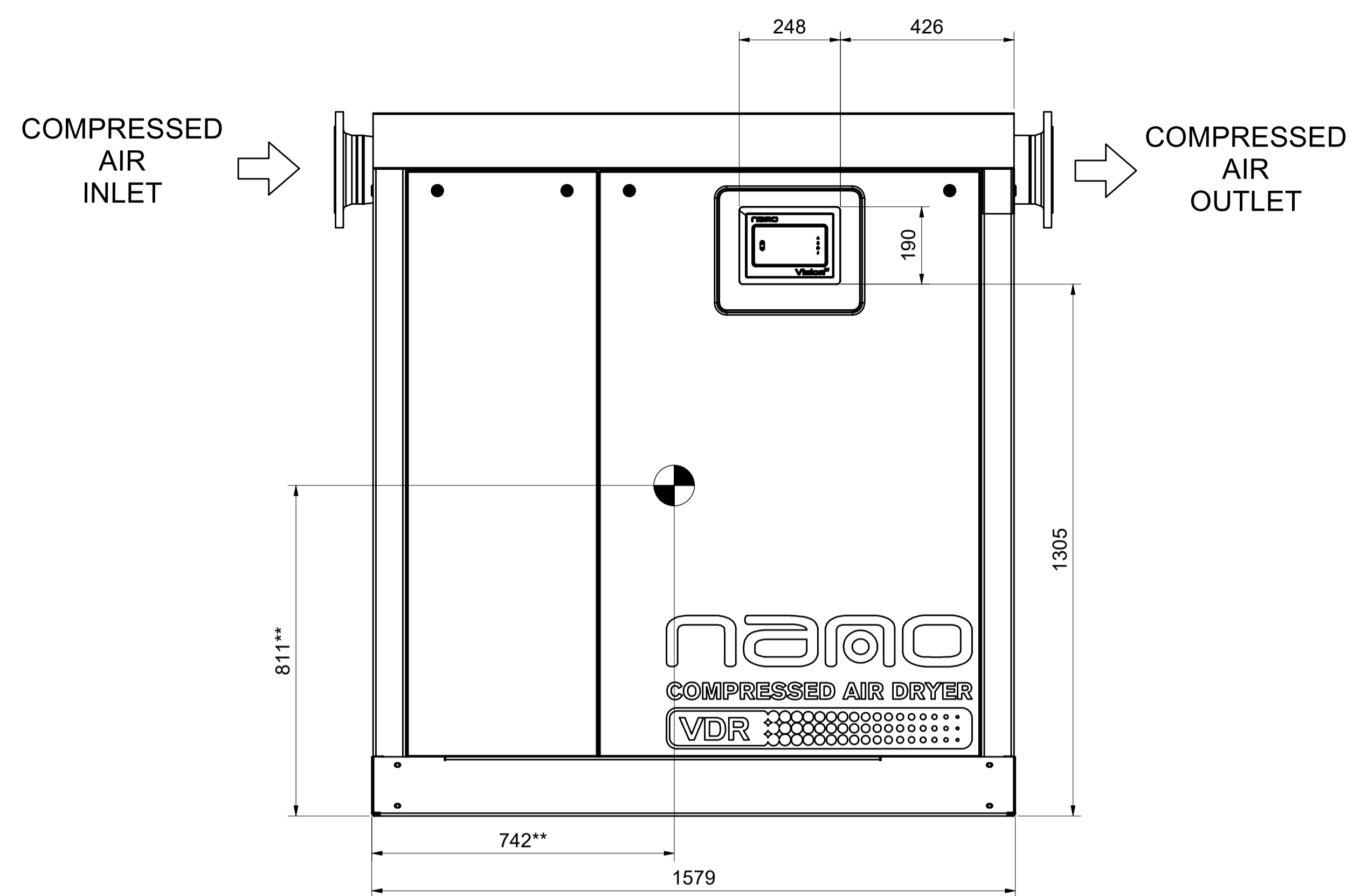


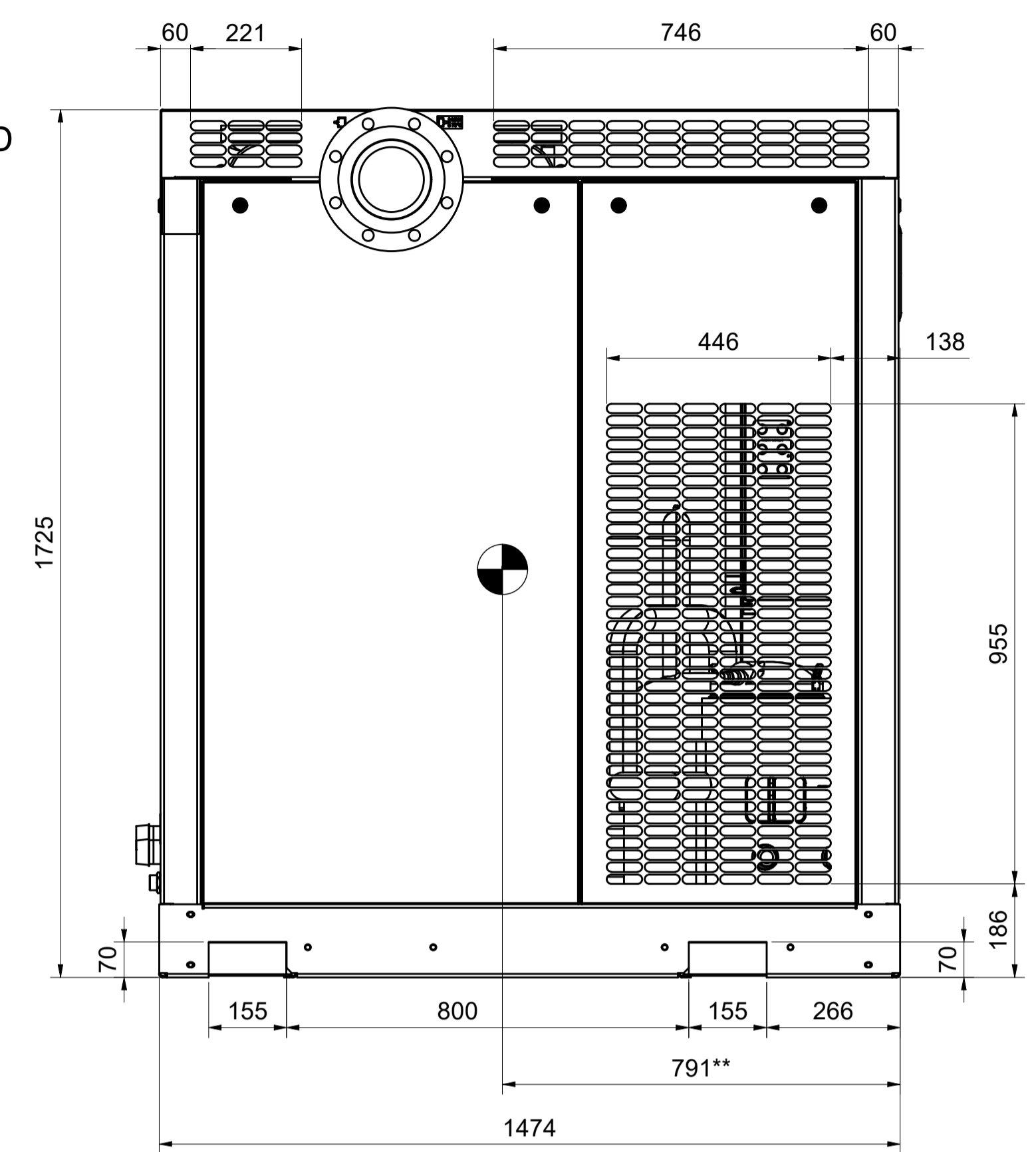
All materials supplied are in compliance with the requirements of the List of Prohibited Substances

VDR 2600-5050
WATERCOOLED

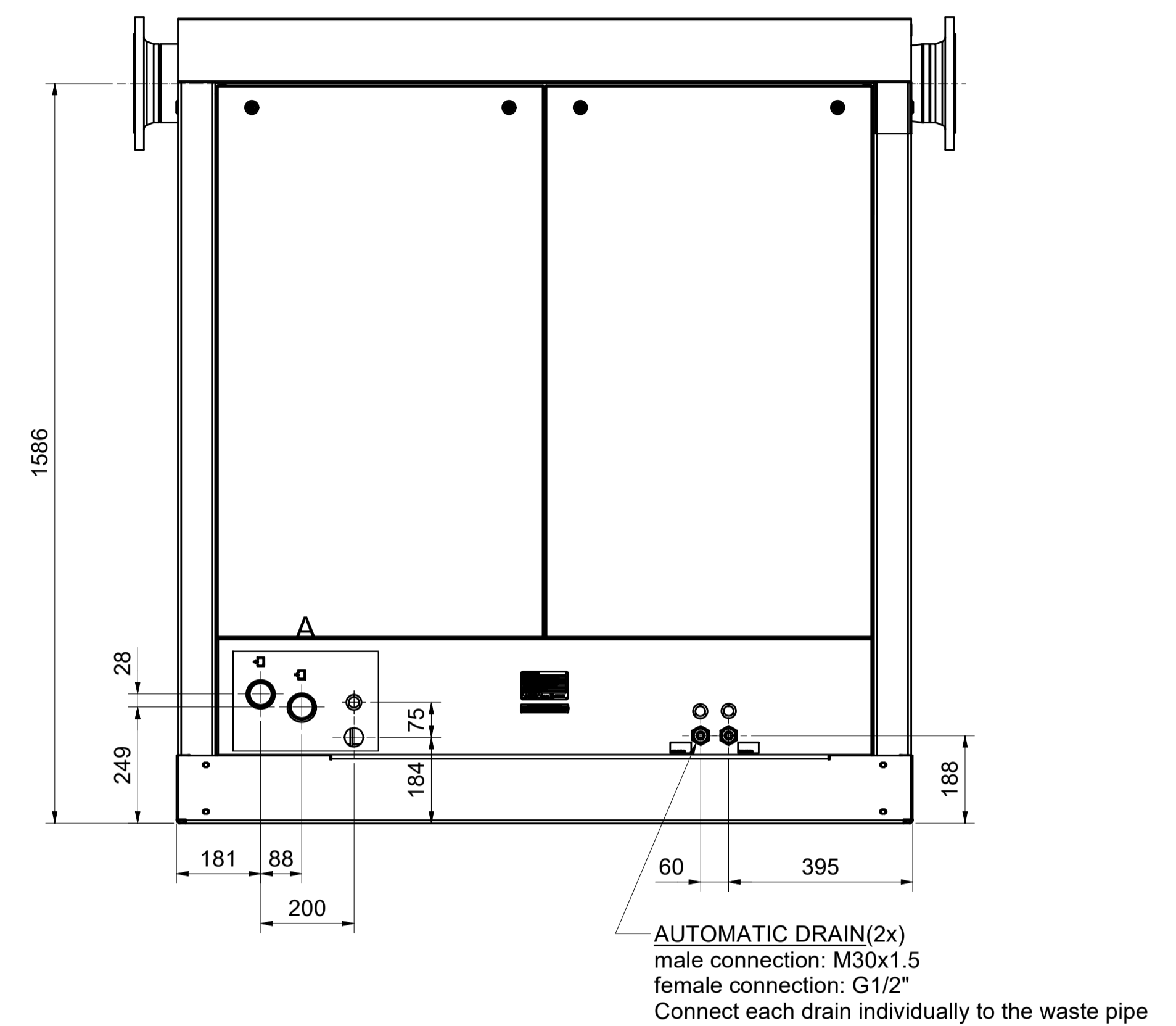
FRONT VIEW



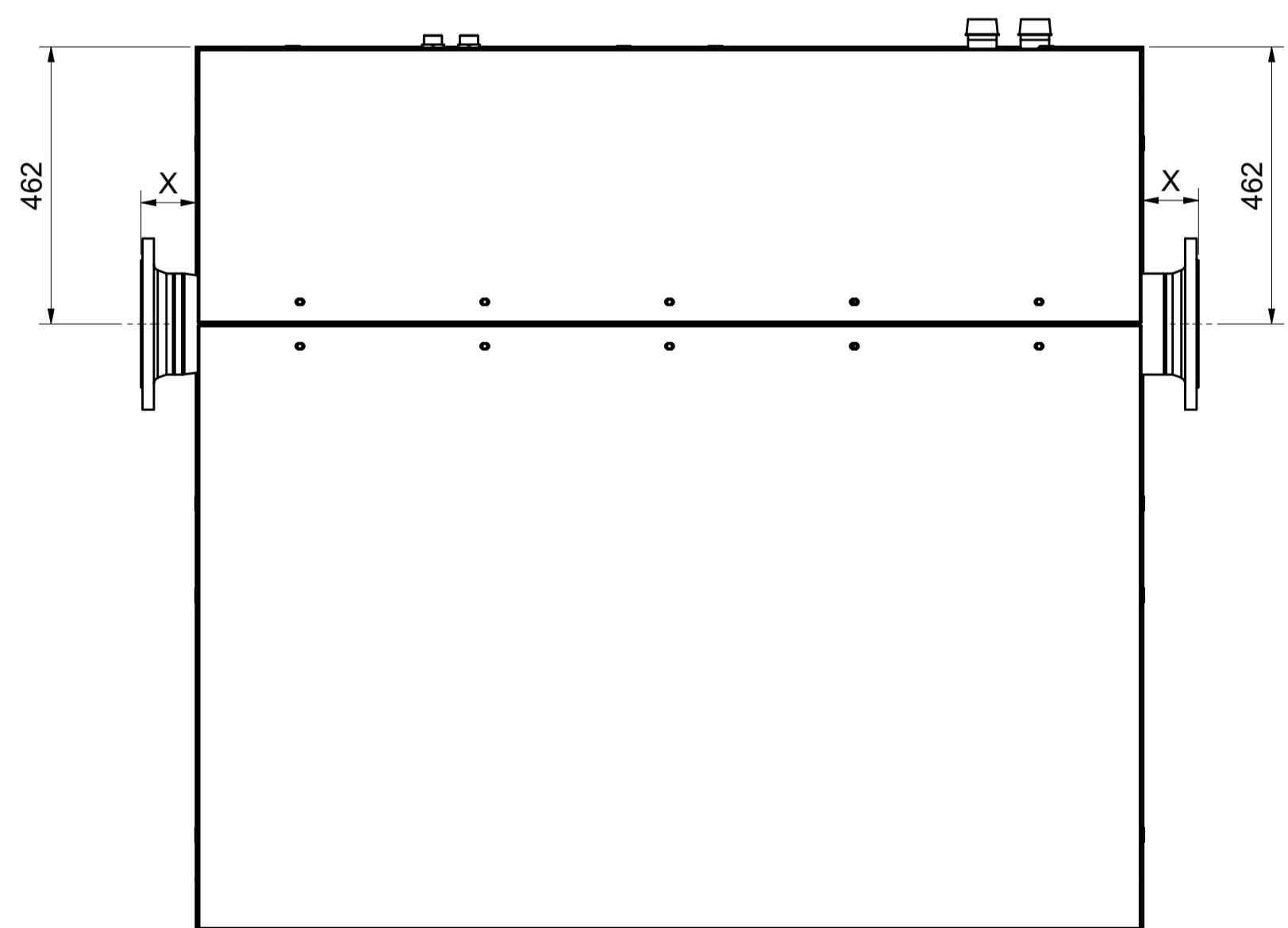
SIDE VIEW



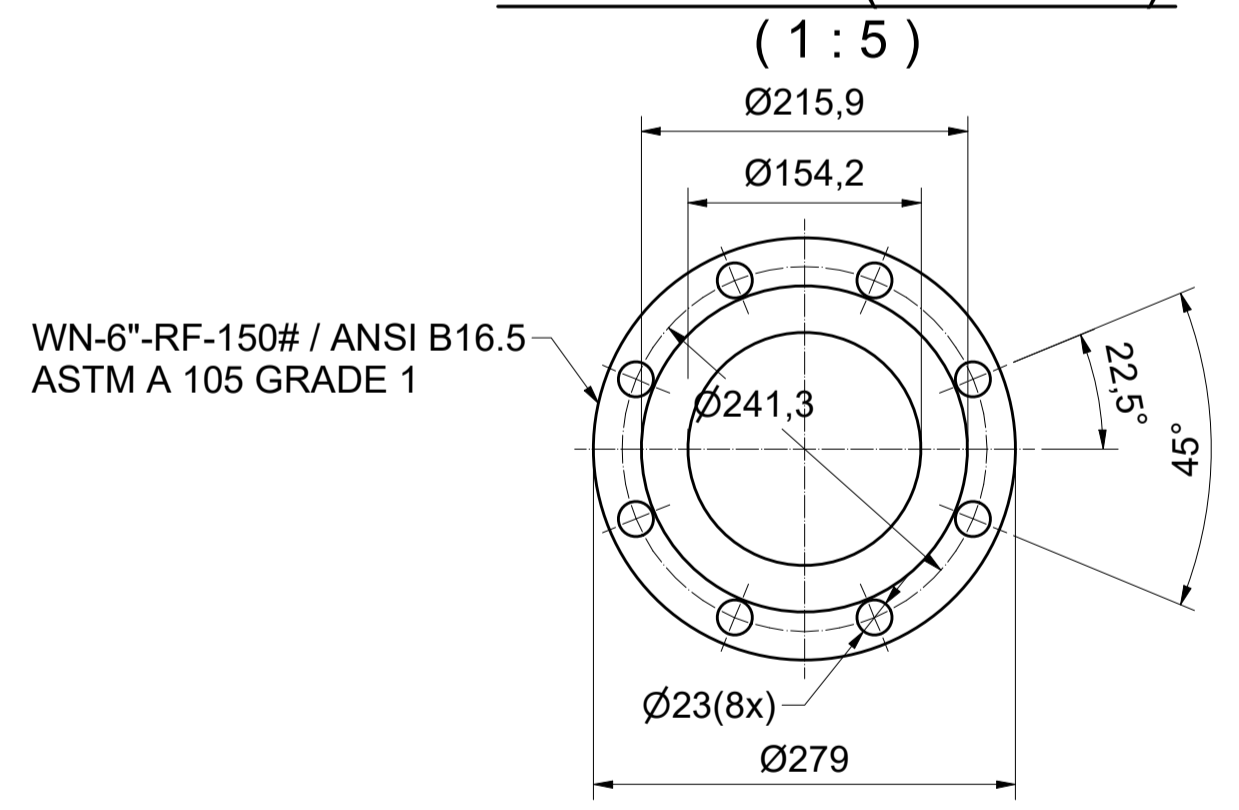
REAR VIEW



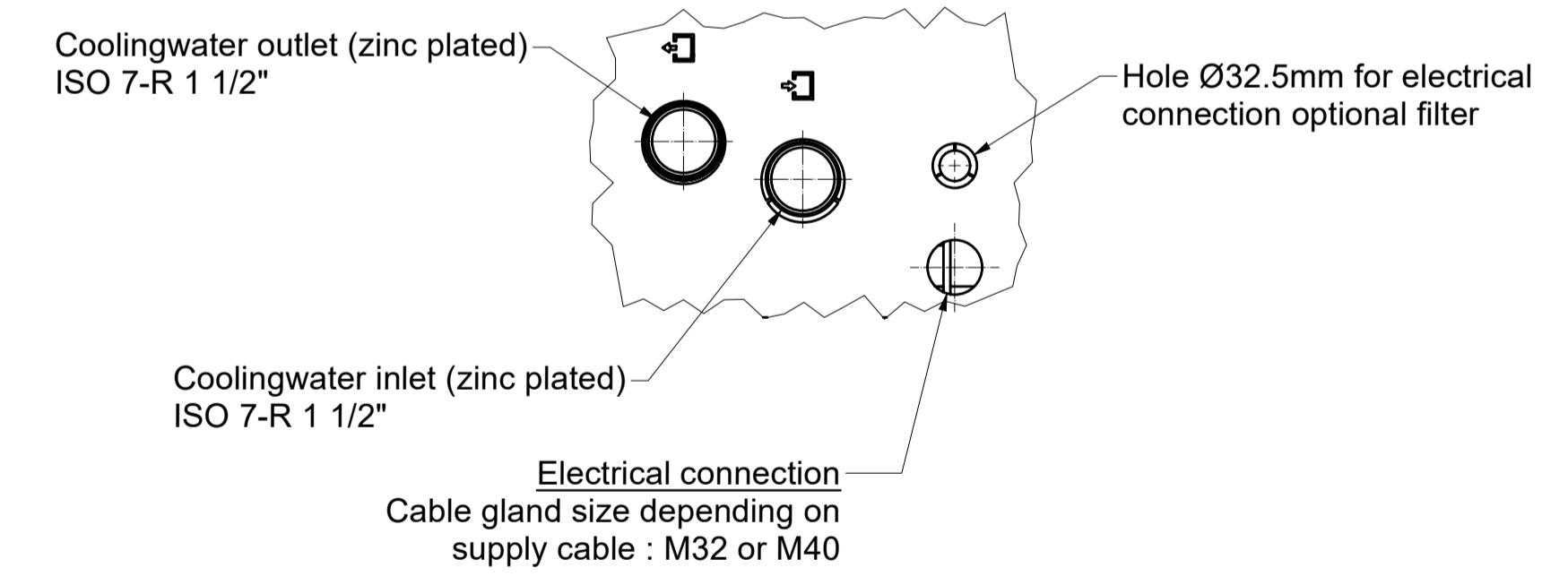
TOP VIEW



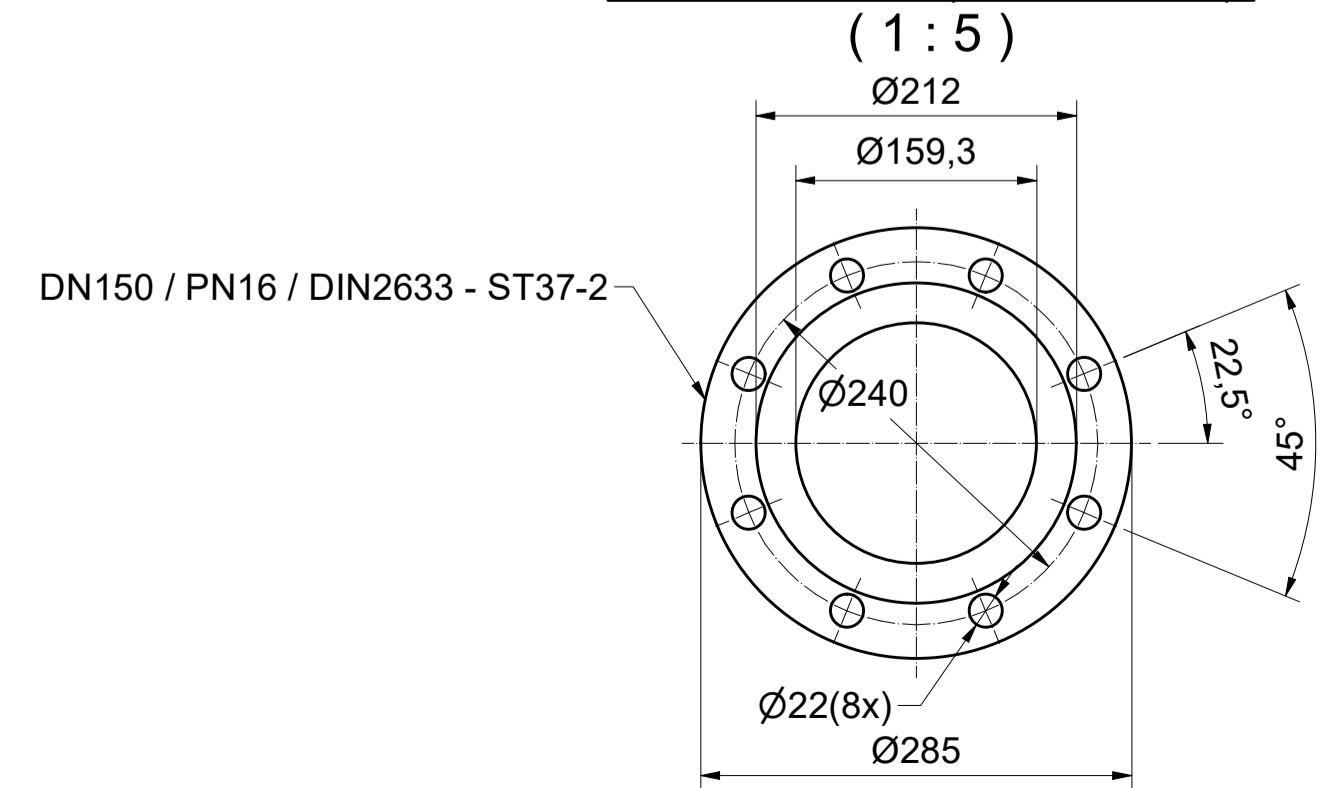
ANSI FLANGE (Zinc Plated)



Water Connections A (1 : 5)



DIN FLANGE (Zinc Plated)



**CENTER OF GRAVITY (APPROXIMATELY)

Dryer Type / Ambient Version	Weight	X DIN FLANGE	X ANSI FLANGE
VDR2600 / 46°C	800 kg	92 mm	126 mm
VDR3150 / 46°C	815 kg	92 mm	126 mm
VDR3700 / 46°C	855 kg	92 mm	126 mm
VDR4200 / 46°C	865 kg	92 mm	126 mm
VDR5050 / 46°C	870 kg	92 mm	126 mm

Tolerances, if not indicated, according to:				
STANDARD CLASS				
Name	DIMENS. DRWG		VDR 2600-5050	
Material	Not applicable		Internal	
Treatment	Not applicable		INV	
Scale	1 : 10	Family	A1	Compare
Drawn by	INEMSI	Blank nr.	Replaces	
Version Drwg		Kg	Finl wt.	4034.251 kg
STATUS	Released	Des checked.	Prod checked.	Approved.
Parent 3D model	1839007680-M1	Ed . Version 3D	Date	13/12/2021
				Designation
				Sheet 2 / 3
				1839007680-01

Ed	Position	Modified from	Date	Intr./Appd.	User Agent
1			25/02/2022		

CONFIDENTIAL: This document is our property and shall not be used without our prior permission. It is not to be distributed outside the company or to any other person or company.