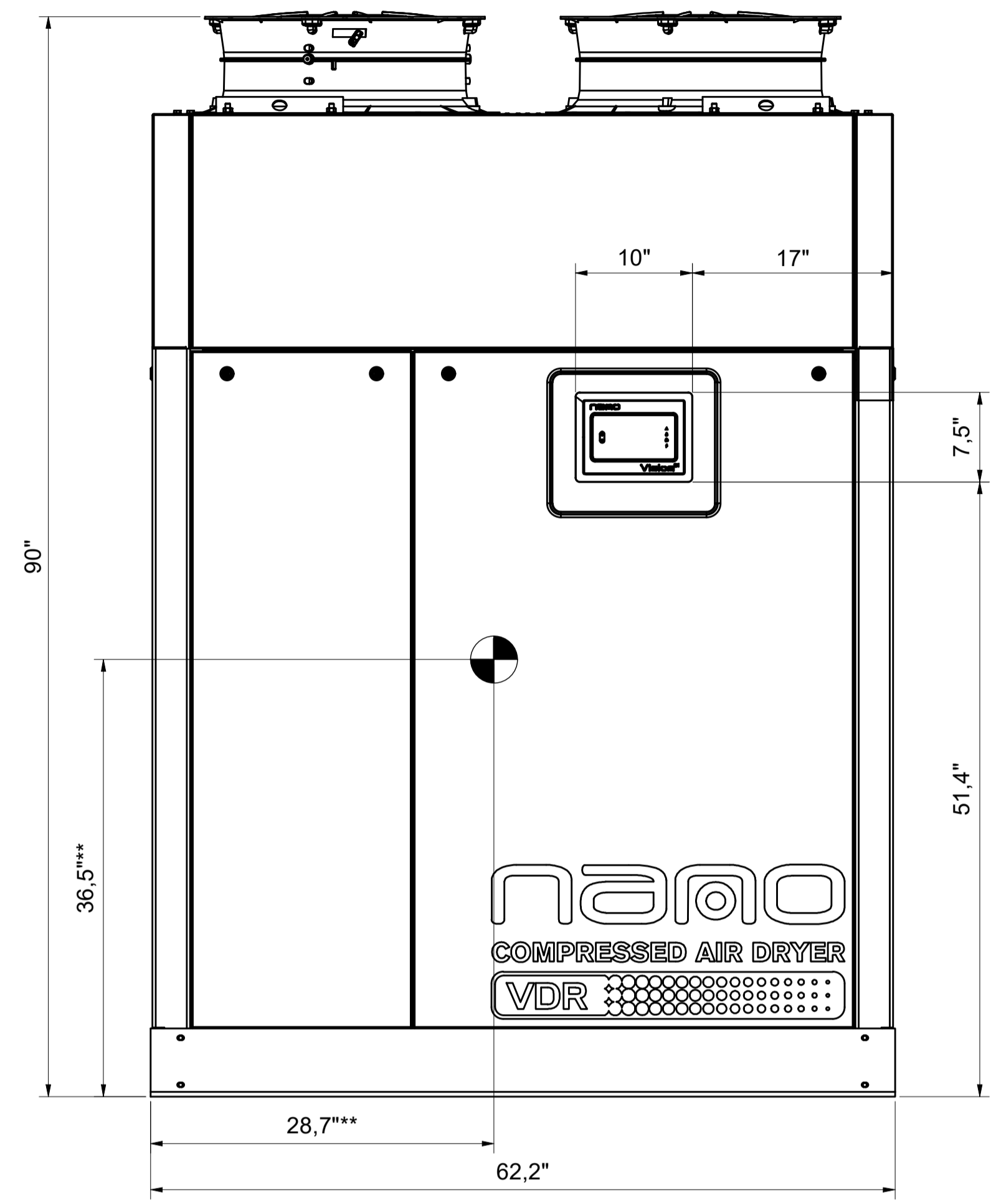


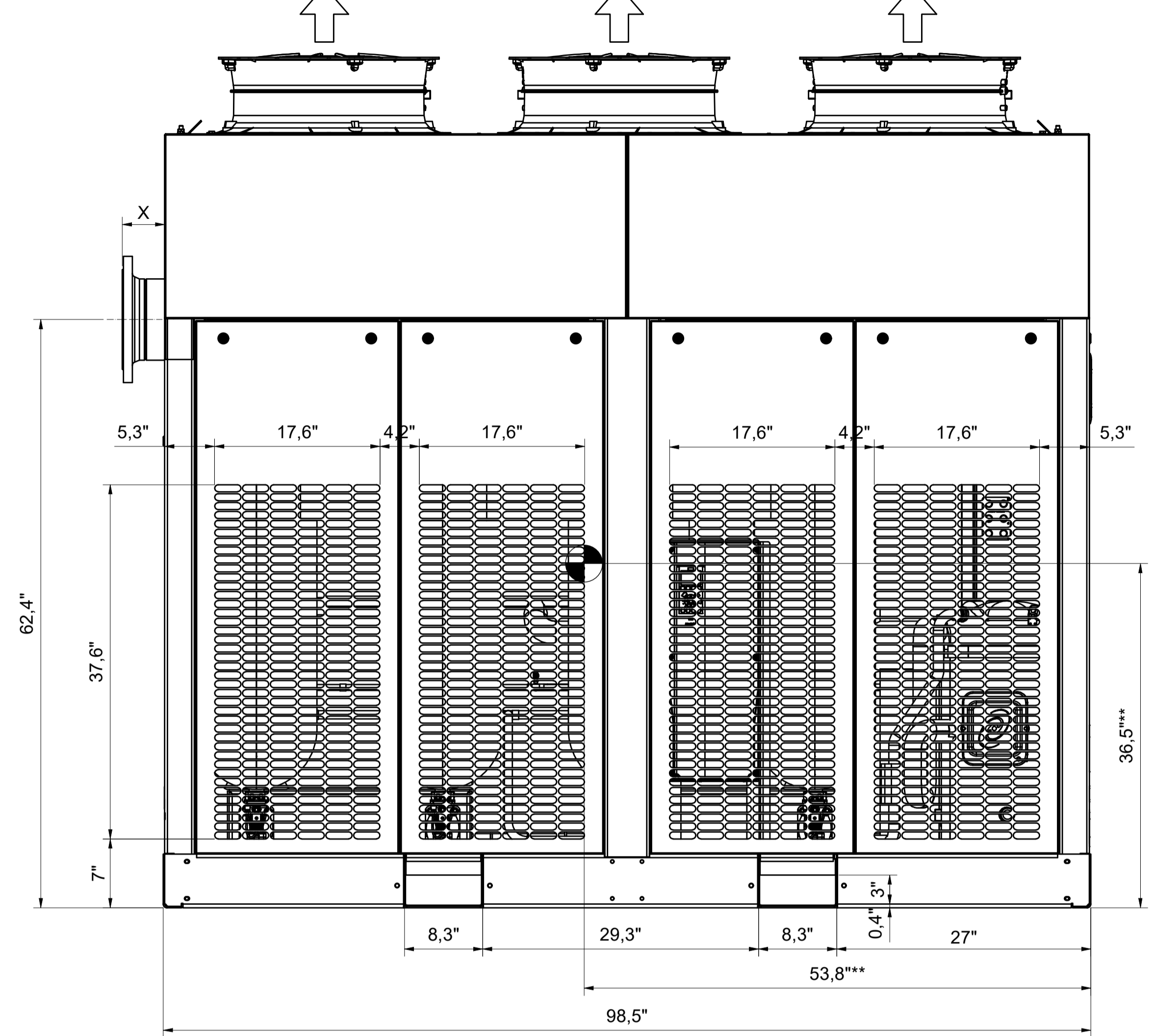
All materials supplied are in compliance with the requirements of the List of Prohibited Substances

VDR6350 / VDR8450  
AIRCOOLED  
SIDE VIEW

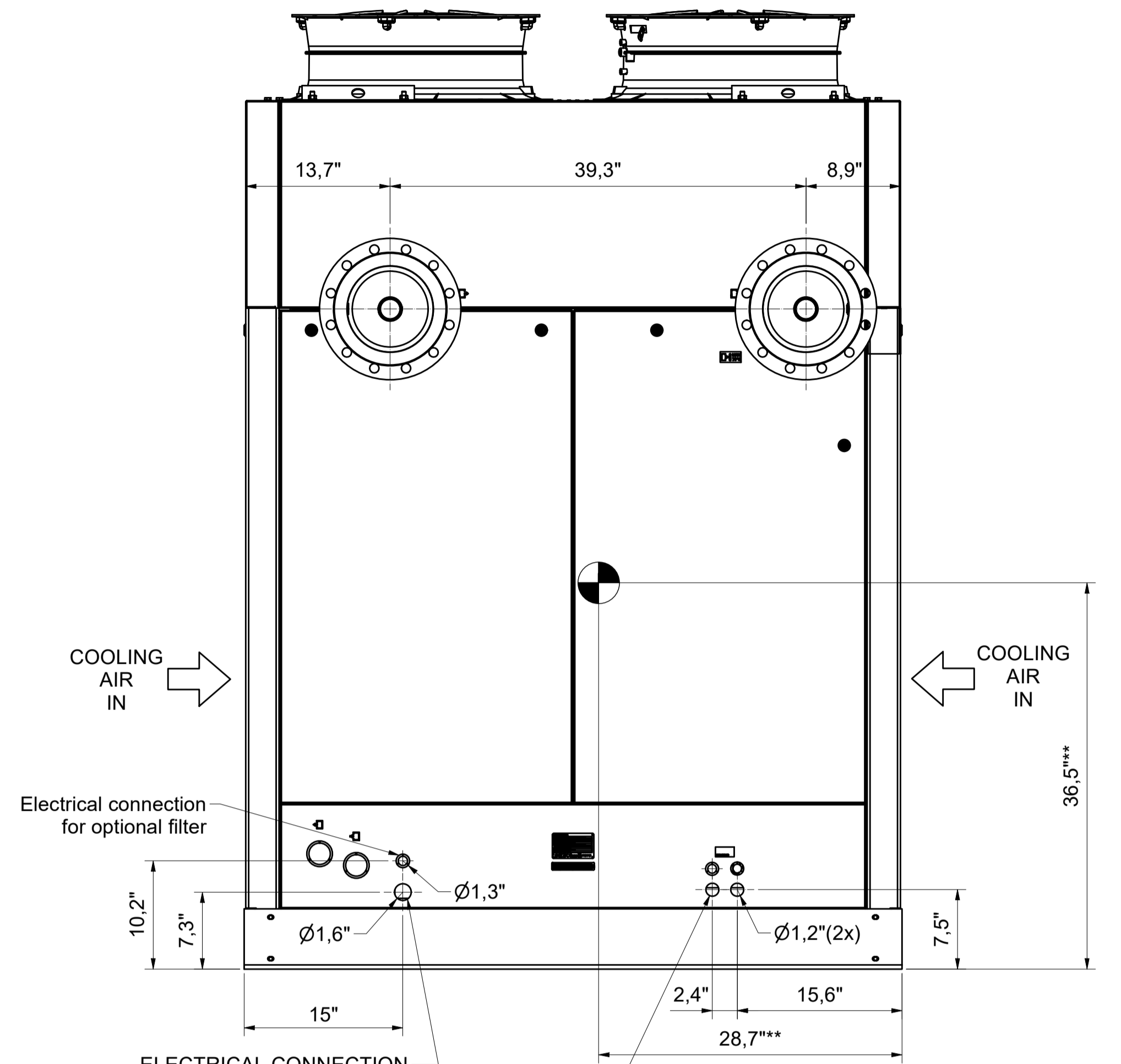
FRONT VIEW



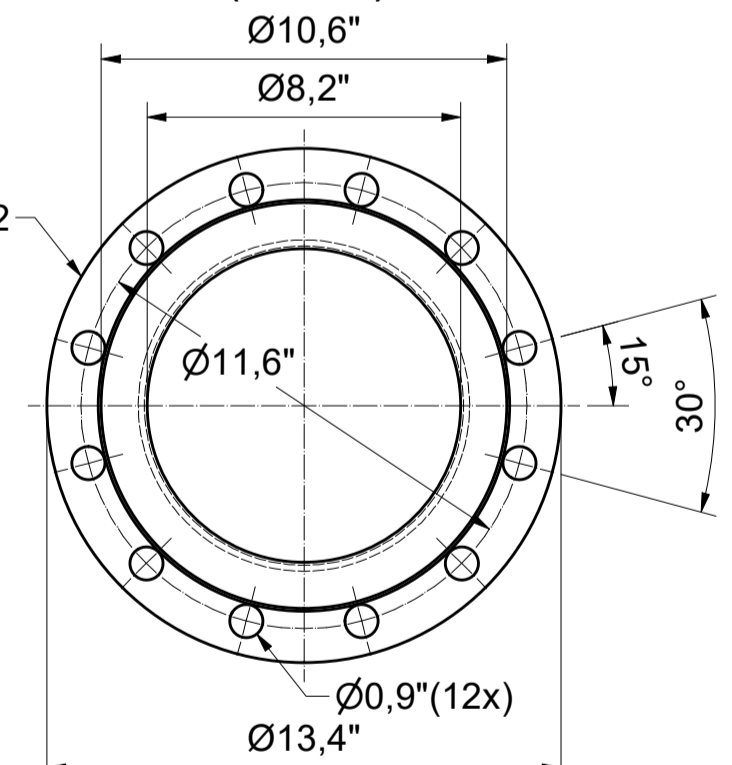
COOLING AIR OUT COOLING AIR OUT COOLING AIR OUT



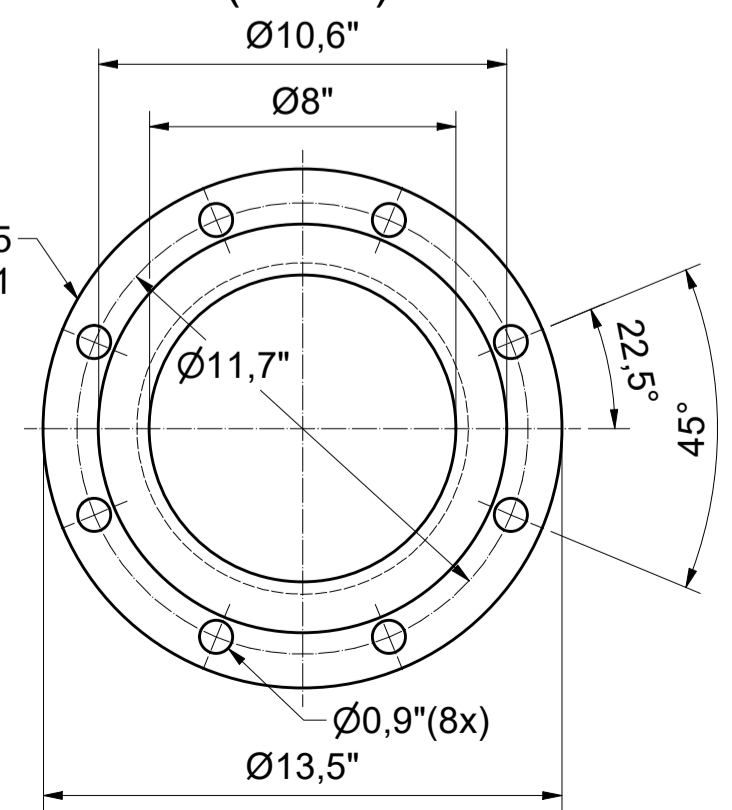
REAR VIEW



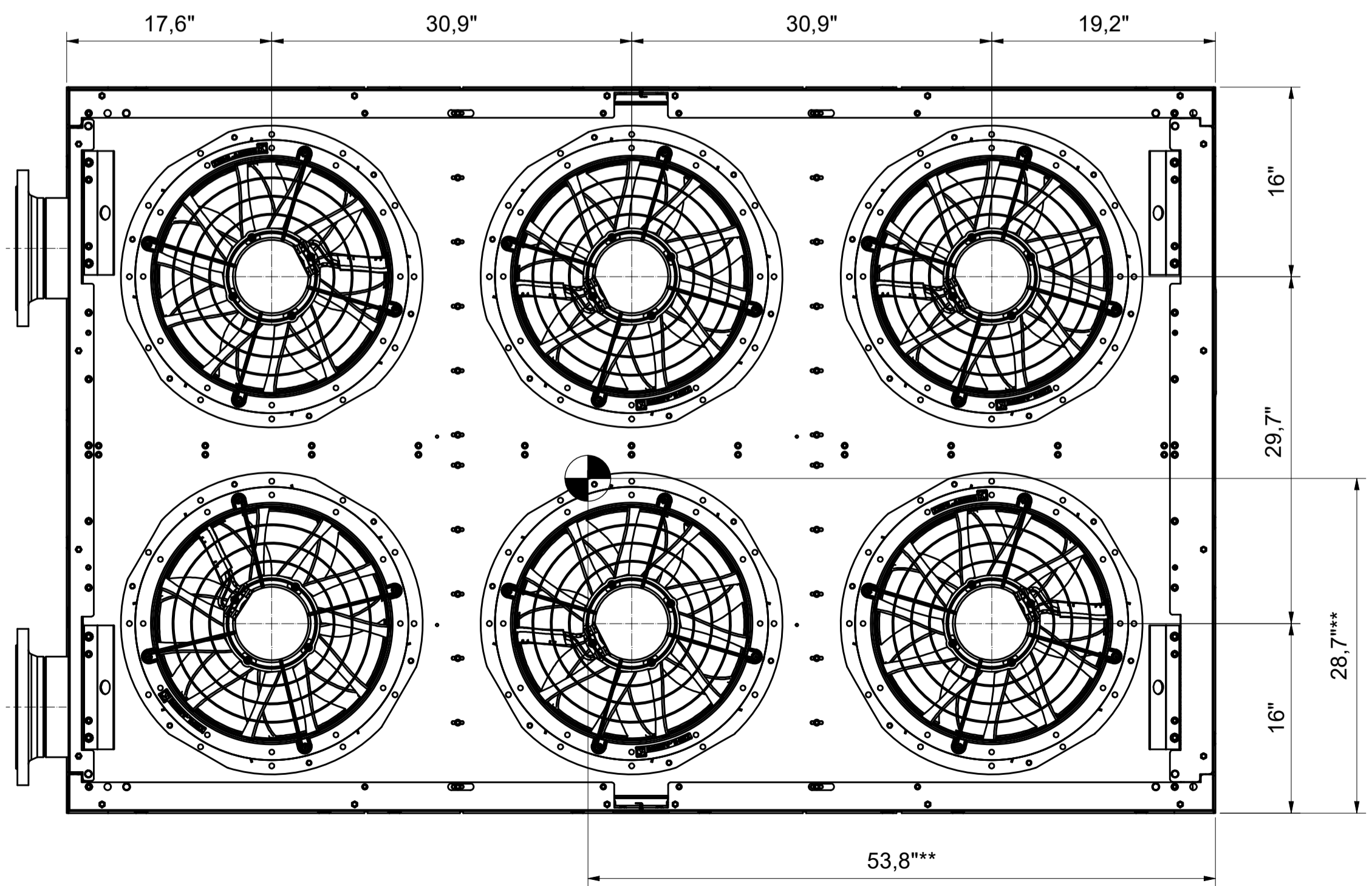
DIN FLANGE (zinc plated)  
(1 : 5)



ANSI FLANGE (zinc plated)  
(1 : 5)



TOP VIEW



COMPRESSED AIR OUTLET

COMPRESSED AIR INLET

COOLING AIR IN

COOLING AIR IN

ELECTRICAL CONNECTION  
Cable gland size depending on  
supply cable : M32 or M40

AUTOMATIC DRAIN  
male connection: M30x1.5  
female connection: G1/2"  
Connect each drain individual to the waste pipe

\*\*CENTER OF GRAVITY (APPROXIMATELY)

Dryer Type / Ambient Version	Weight	X DIN FLANGE	X ANSI FLANGE
VDR6350 / 104°F	3726 lbs	4,5"	6"
VDR8450 / 104°F	4012 lbs	4,5"	6"

Tolerances, if not indicated, according to:			
STANDARD CLASS			
Name	DIMENS. DRWG		VDR6350 / VDR8450
Material	Not Applicable		Confidentiality Class acc. to 1102 K
Treatment	Not Applicable		Internal
Scale	1 : 10	Family	A1 Compare
Drawn by	INEMSI	Blank nr.	Replaces
Version Drwg		Kg/Fini wt.	7451 lbs
STATUS	Des checked.	Prod checked.	Approved.
Parent 3D model	1839007671-M1	Ed.	Version 3D
Released		Date	12/11/2021
			Sheet 1 / 3
			Designation 1839007671-02

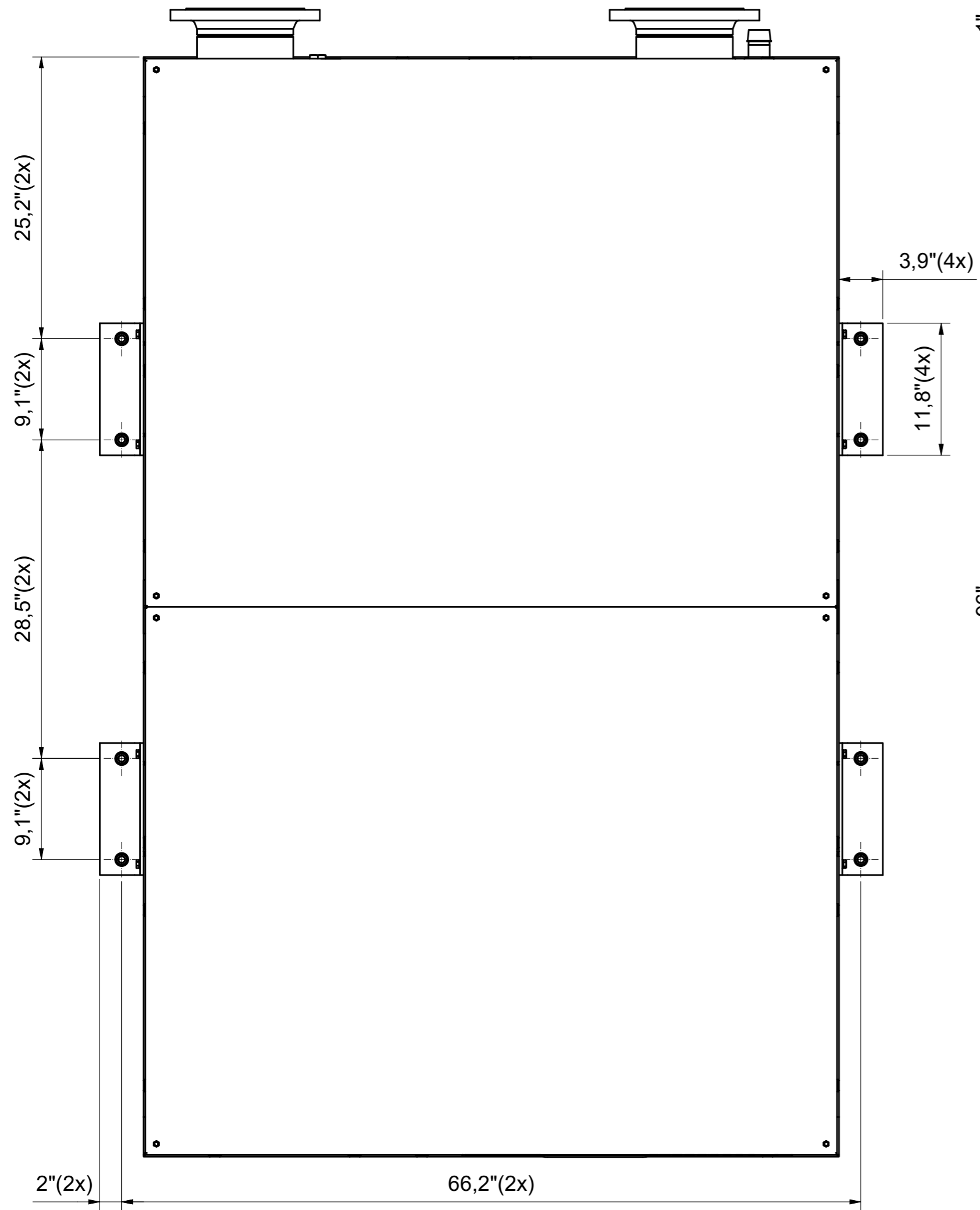
CONFIDENTIAL: This document is our property and shall not be used without our prior permission. Its use is limited to manufacturing or commercialization by our client or partner or company.

1	Ed	Position	Modified from	25/02/2022	User Agent
				Date	Intr./Appd.

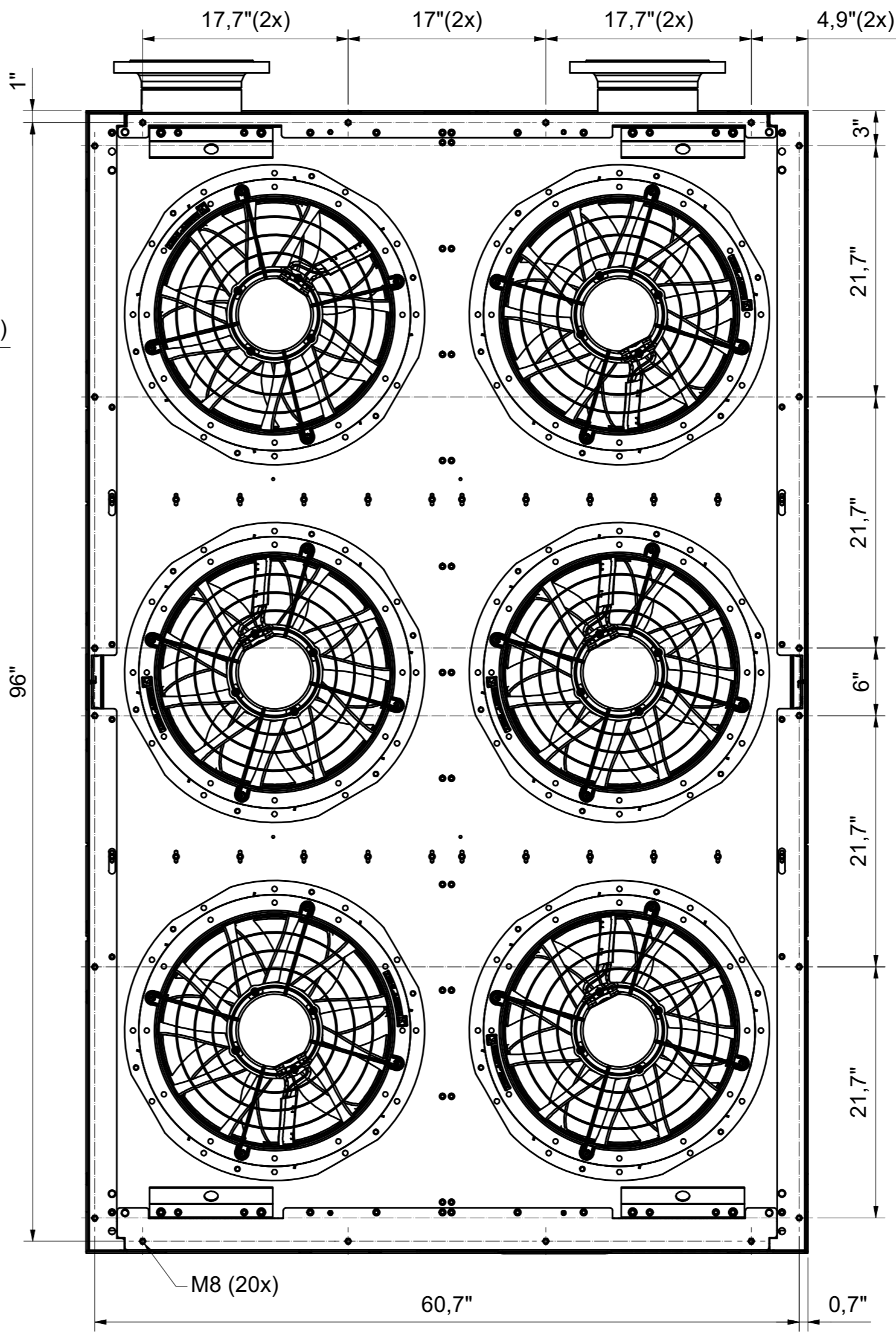
All materials supplied are in compliance with the requirements of the List of Prohibited Substances

CONFIDENTIAL: This document is our property and shall not without our permission be altered, copied, used for manufacturing or communicated to any other person or company.

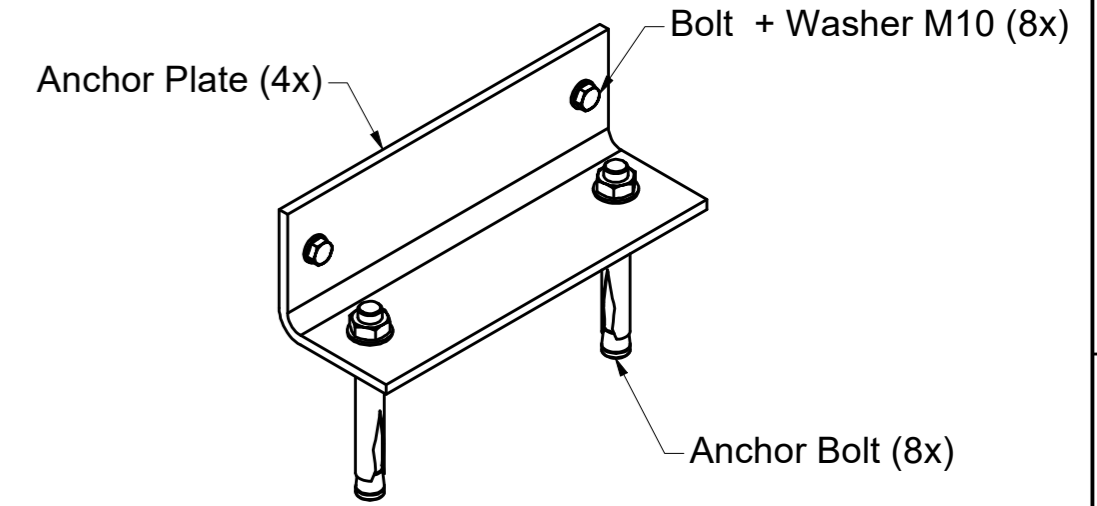
### ANCHOR PADS



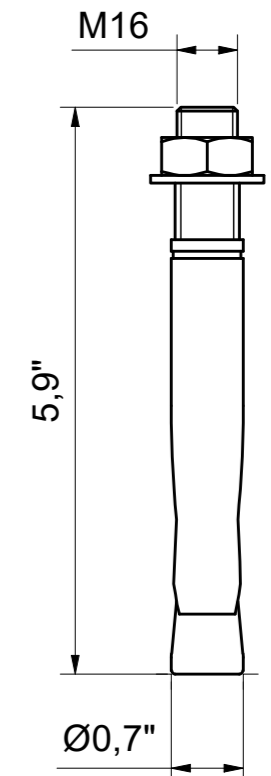
### DUCTING CONNECTIONS



### ANCHOR KIT (1:5)



### ANCHOR BOLT (1:2)



1			25/02/2022	User Agent
Ed	Position	Modified from	Date	Intr./Appd.

1839007671-M1	1
Parent 3D model	Ed. Version 3D

Tolerances, if not indicated, according to:									
STANDARD CLASS									
Name		DIMENS. DRWG			VDR6350 / VDR8450			Confidentiality Class	
Material		Not Applicable						acc. to 1102 K	
Treatment		Not Applicable						Internal	
								INV	
Scale		1:10			Family			A2 Compare	
Drawn by		INEMSI			Blank nr.			Replaces	
Version Drwg					Kg			Fini wt. 7451 lbs	
Des checked.		Prod checked.			Approved.			Date 12/11/2021	
STATUS		Released			Designation			Sheet 3 / 3	
								Drawing owner	
								APF	
1839007671-02									