

NOTES: UNLESS OTHERWISE SPECIFIED  
1. DIMENSIONS ARE mm

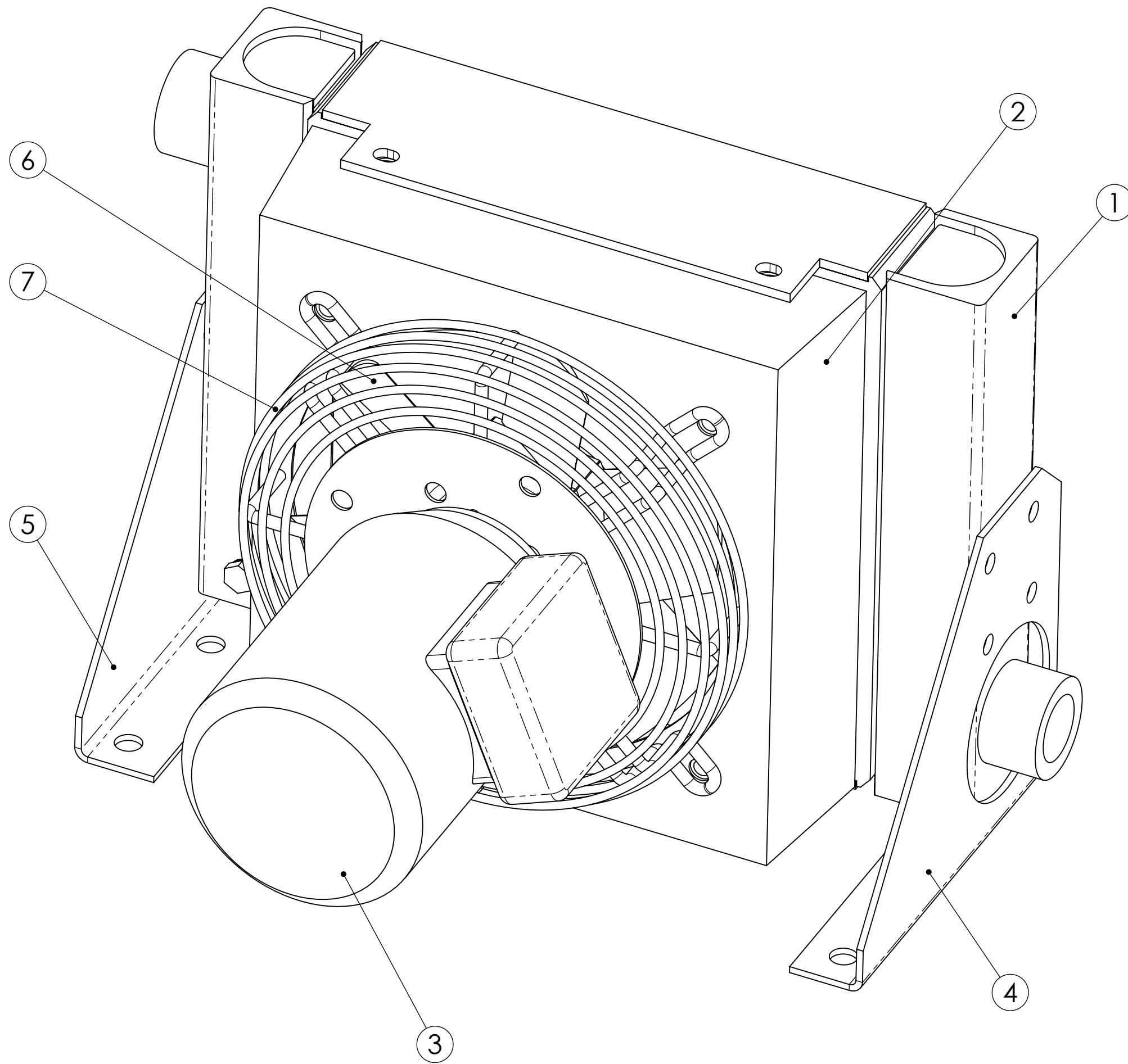
Work Pressure (psi) (Max)	250
Test Pressure (psi) (Max)	190
Paint	BLACK
Part No:	X-CC100-3
Fin System	7318/7101

UNLESS OTHERWISE SPECIFIED  
ALL DIMENSIONS ARE REFERENCE



THE INFORMATION HEREON IS THE PROPERTY OF NANO-PURIFICATION SOLUTIONS. ANY COPYING OR TRANSMITTAL WITHOUT PERMISSION FROM NANO-PURIFICATION SOLUTIONS IS PROHIBITED	
DRWN BY:	Nance
DATE:	4/16/09
ENGR:	Nance

TITLE	
Aftercooler Assembly	
DWG. NO.	3703.397.0000
PAGE:	1 of 2
REV.	-



7	1	3703.023.4030	Fanguard
6	1	8400.039.0009	Fan 8.75-6-2L-PP-35°M10Hub
5	1	3703.020.0002	Mounting Bracket
4	1	3703.020.0001	Mounting Bracket
3	1	8407.144.2502	Motor 1/3HP, D63C, 3PH, 3450 RPM TEFC
2	1	1872.380.4010	Shroud
1	1	3703.030.4000	X-CC-100-C Cooler
ITEM NO.	QTY.	PART NUMBER	DESCRIPTION

Work Pressure (psi) (Max)	250
Test Pressure (psi) (Max)	190
Paint	BLACK
Part No:	X-CC100-3
Fin System	7318/7101

UNLESS OTHERWISE SPECIFIED ALL DIMENSIONS ARE REFERENCE



THE INFORMATION HEREON IS THE PROPERTY OF NANO-PURIFICATION SOLUTIONS. ANY COPYING OR TRANSMITTAL WITHOUT PERMISSION FROM NANO-PURIFICATION SOLUTIONS IS PROHIBITED

DRWN BY:	Nance
DATE:	4/16/09
ENGR:	Nance

TITLE	
Aftercooler Assembly	
DWG. NO.	REV.
3703.397.0000	-
PAGE:	2 of 2