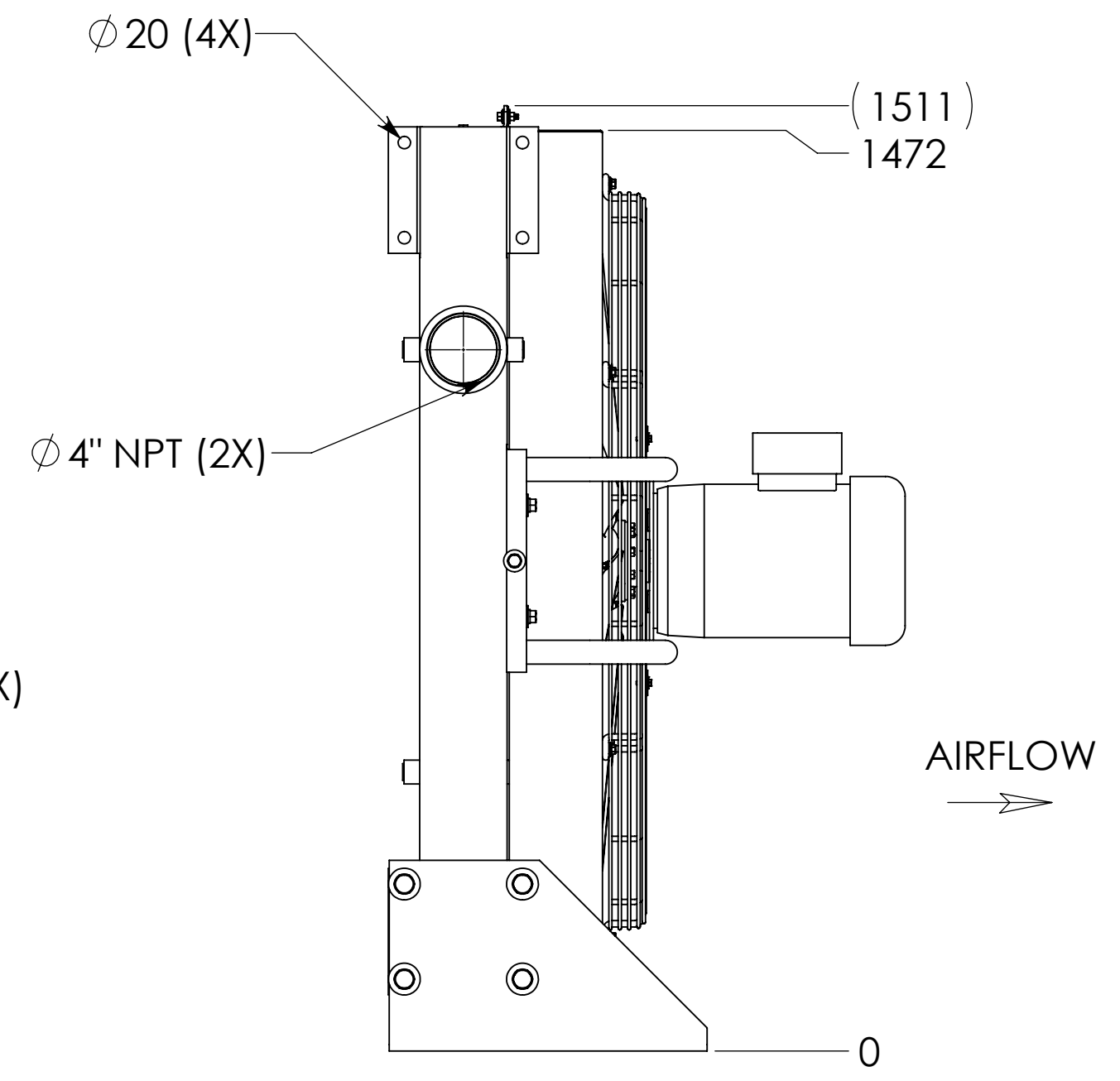
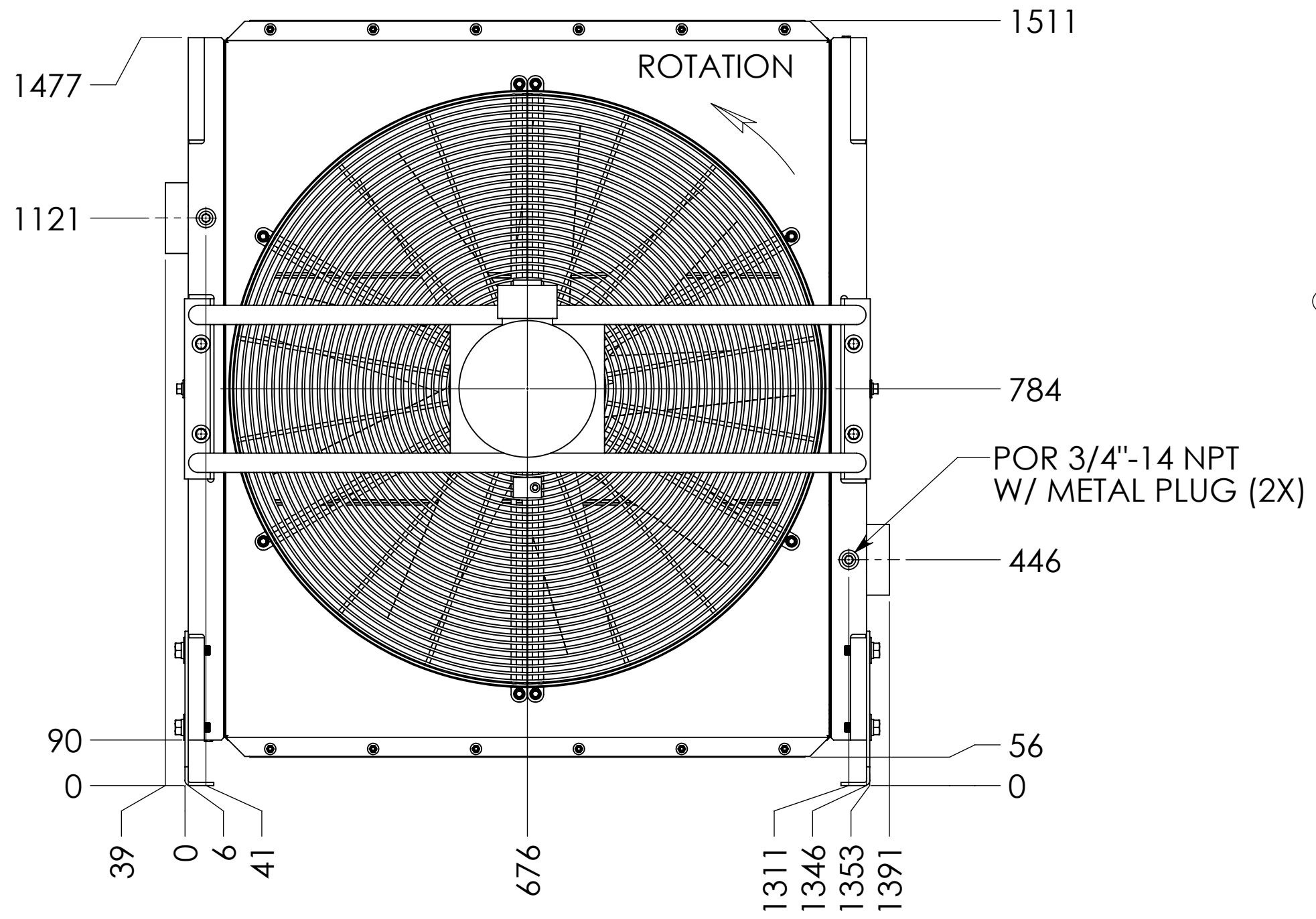
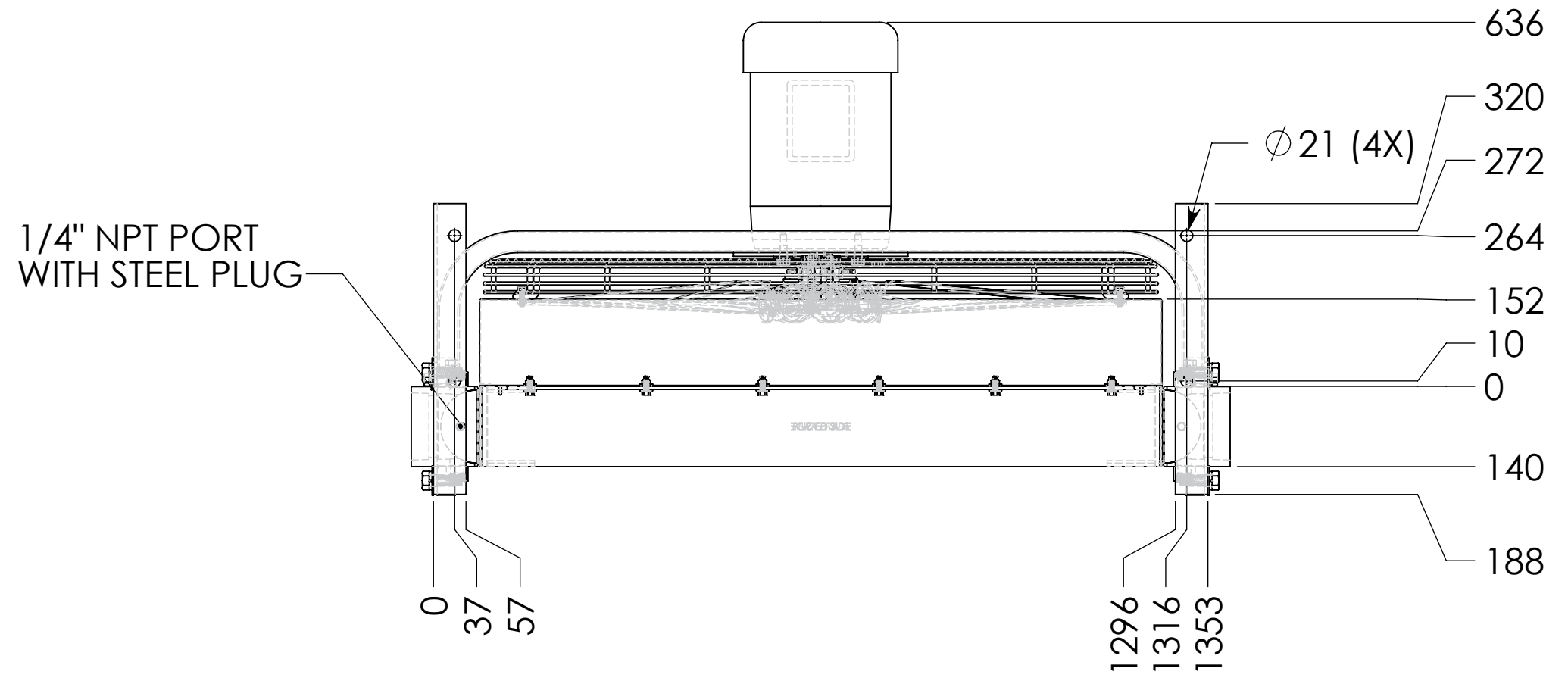


REVISION				
REV.	ECN	DESCRIPTION	DATE	DESIGNER
A	533-08	LIFTING EYE 3606.015.0002 3/4" ϕ HOLE WAS 1" ϕ	10/29/08	KAWA
B	-	WORK PRESSURE was 150psi	7/7/2010	Nance
C		Updated the core to a 3703.895.1000	1/5/2015	MILLER



B

Work Pressure (psi) (Max)	250
Test Pressure (psi) (Max)	190
Max Temperature (°F)	250
Paint	BLACK
Part No:	-

UNLESS OTHERWISE SPECIFIED
 1. Dimensions are mm.
 2. All dimensions are reference unless tolerance is specified.

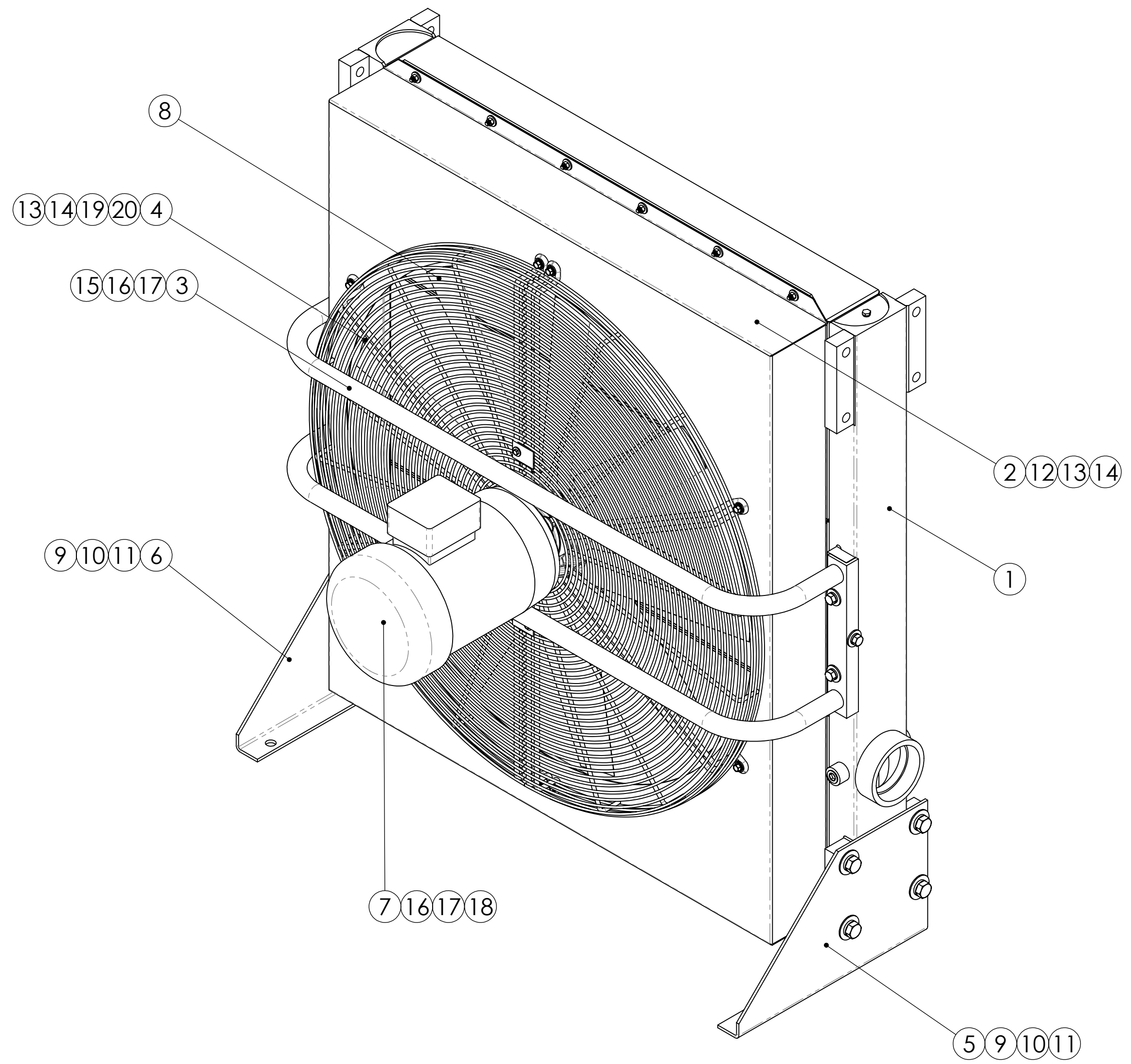


THE INFORMATION HEREON IS THE PROPERTY OF NANO-PURIFICATION SOLUTIONS. ANY COPYING OR TRANSMITTAL WITHOUT PERMISSION FROM NANO-PURIFICATION SOLUTIONS IS PROHIBITED

DRWN BY:	GRIFFITH
DATE:	05/25/07
ENGR:	BURRESS

TITLE		X-CC3500-3	REV. C
DWG. NO.			
PAGE:		1 of 2	

REVISION				
REV.	ECN	DESCRIPTION	DATE	DESIGNER
-	-	See Sheet1	-	-



ITEM	QTY.	PART NUMBER	DESCRIPTION
20	2	8054.019.0000	WASHER, FLAT - M6
19	2	8050.011.0000	BLT HX HD M6x1 X 20mm GR5 ZTR
18	4	8050.064.0000	BLT HX HD 1/2-13 X 1" GR5 ZTR
17	10	8054.043.0000	LKW SPR 1/2" X .869" OD GR2 ZTR
16	10	8054.042.0000	FLW 1/2 X 1-3/8" OD GR5 ZTR
15	6	8050.065.0000	BLT HX HD 1/2-13 X 1-1/4" GR5 ZTR
14	32	8054.033.0000	FLW 5/16 X 7/8" OD GR5 ZTR
13	20	8050.035.0000	BLT HX FLG SRRT 5/16-18 X 1" GR5 ZTR
12	12	8049.033.0000	NUT- FLGHD (5/16"-18UNC)
11	8	8054.091.0000	3/4" Lock Washer
10	8	8054.090.0000	FLW 3/4 X 2.0" OD GR2 ZTR
9	8	600887	BLT HX HD 3/4-10 X 2-1/4" GR8 ZTR
8	1	8400.510.0042 B	42/9-9/25/PAG/5ZL/SH 1.375" x .312" L=2.605"/AR
7	1	8407.112.4009	Motor 10 HP 215 TC
6	1	3703.068.0002	Left Mounting Bracket
5	1	3703.068.0001	Right Mounting Bracket
4	1	3518.008.4030	44" Dia. Fingerguard
3	1	3703.068.0060	Motor Mount Assembly
2	1	3703.068.4010	Fan Shroud Housing
1	1	3703.895.1000	AFTERCOOLER

Work Pressure (psi) (Max)	250
Test Pressure (psi) (Max)	190
Max Temperature (°F)	250
Paint	BLACK
Part No:	-

UNLESS OTHERWISE SPECIFIED
 1. Dimensions are mm.
 2. All dimensions are reference unless tolerance is specified.



THE INFORMATION HEREON IS THE PROPERTY OF NANO-PURIFICATION SOLUTIONS. ANY COPYING OR TRANSMITTAL WITHOUT PERMISSION FROM NANO-PURIFICATION SOLUTIONS IS PROHIBITED	
DRWN BY:	GRIFFITH
DATE:	05/25/07
ENGR:	BURRESS

TITLE		X-CC3500-3
DWG. NO.	3703.219.0000	
PAGE:	2 of 2	REV. C