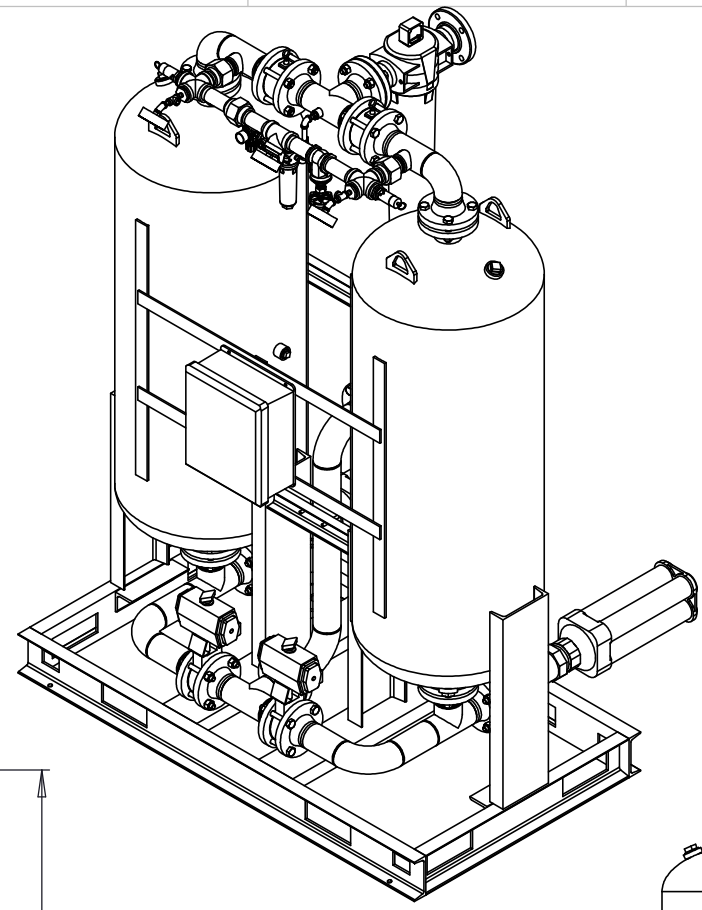
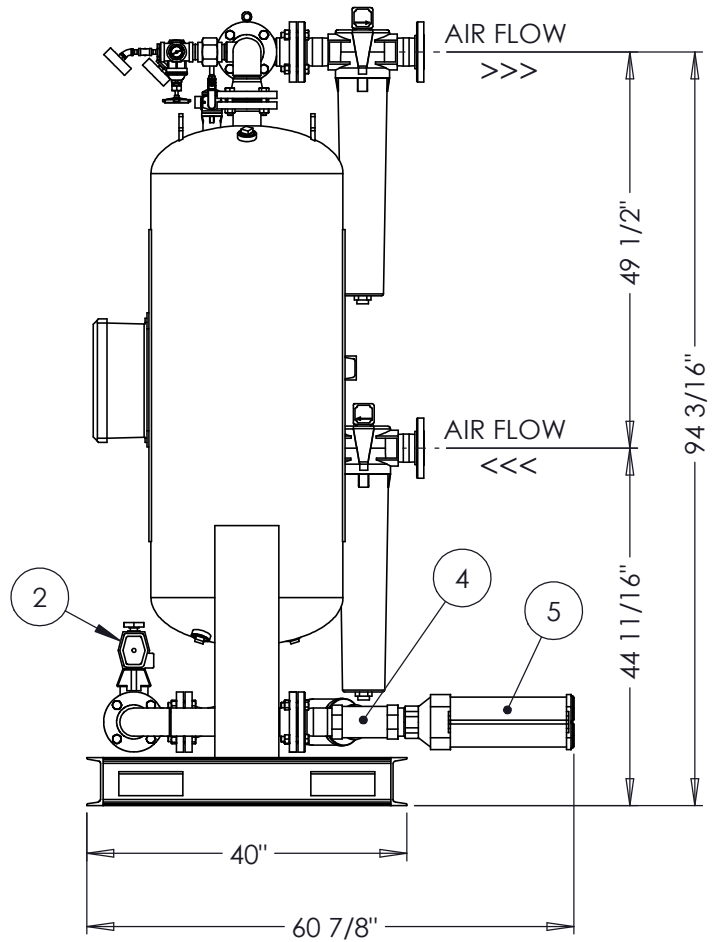
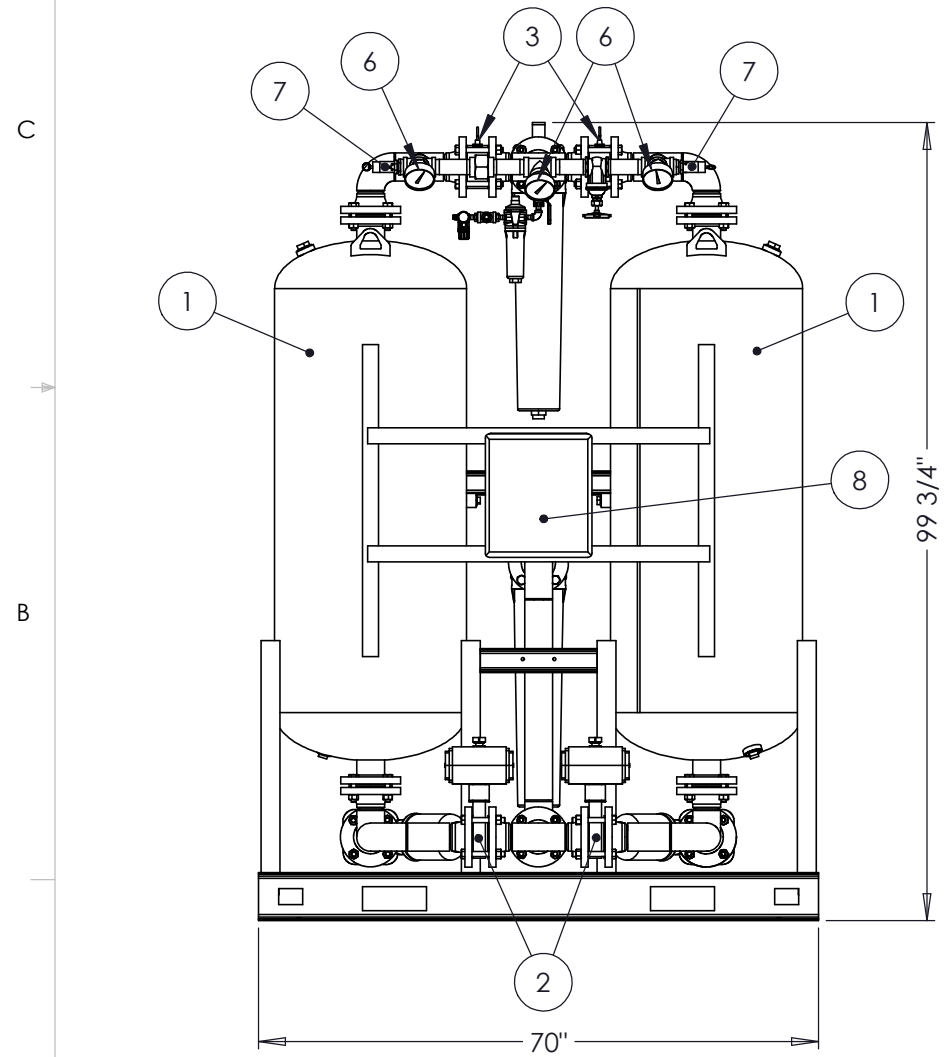
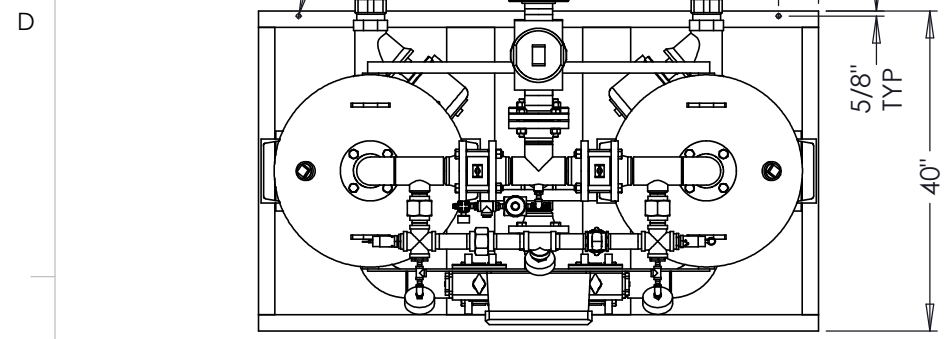
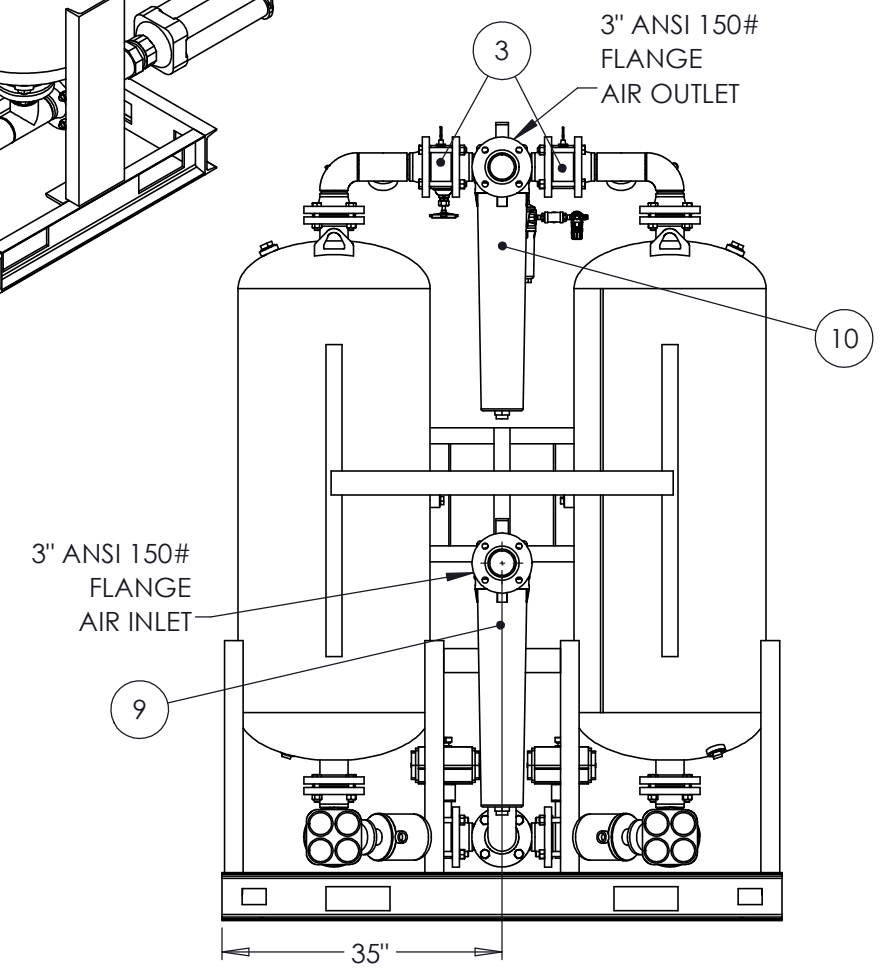


Ø9/16"
MOUNT HOLES
(4) PLCS



ITEM NO	QTY	DESCRIPTION
1	2	DESICCANT VESSEL
2	2	INLET BUTTERFLY VALVE
3	2	OUTLET CHECK VALVE
4	2	PURGE EXHAUST VALVE
5	2	EXHAUST MUFFLER
6	3	PRESSURE GAUGE
7	2	PRESSURE RELIEF VALVE
8	1	ELECTRICAL ENCLOSURE
9	1	PRE-FILTER
10	1	AFTER FILTER



UNLESS OTHERWISE SPECIFIED:
DIMENSIONS ARE IN INCHES
TOLERANCES:
FRACTIONAL ± 0.125
ANGULAR: ± 0.5°
TWO PLACE DECIMAL ± .03
THREE PLACE DECIMAL ± .003

THIRD ANGLE PROJECTION

MATERIAL

FINISH

DO NOT SCALE DRAWING

	NAME	DATE
DRAWN	BH	07/12/24
CHECKED		
ENG APPR.		
MFG APPR.		
Q.A.		
COMMENTS:		

nano NANO-PURIFICATION SOLUTIONS
323 CRISP CIRCLE
MARYVILLE, TENNESSEE 37801-USA

TITLE: DRYER, DESICCANT, HL1250 ASSY,
HEATLESS, PKG B, 1 PRE & AFTER
FILTER; 1250 SCFM, 200 PSI, 100F, T-24

SIZE B	DWG. NO. HL1250B1PNXXX	REV 0
------------------	---------------------------	-----------------

SCALE: 1:50 WEIGHT: SHEET 1 OF 1

PROPRIETARY AND CONFIDENTIAL
THE INFORMATION CONTAINED IN THIS DRAWING IS SOLE PROPERTY OF NANO
PURIFICATION SOLUTIONS. ANY REPRODUCTION IN PART OR WHOLE WITHOUT
THE WRITTEN PERMISSION OF NANO PURIFICATION SOLUTIONS IS PROHIBITED.