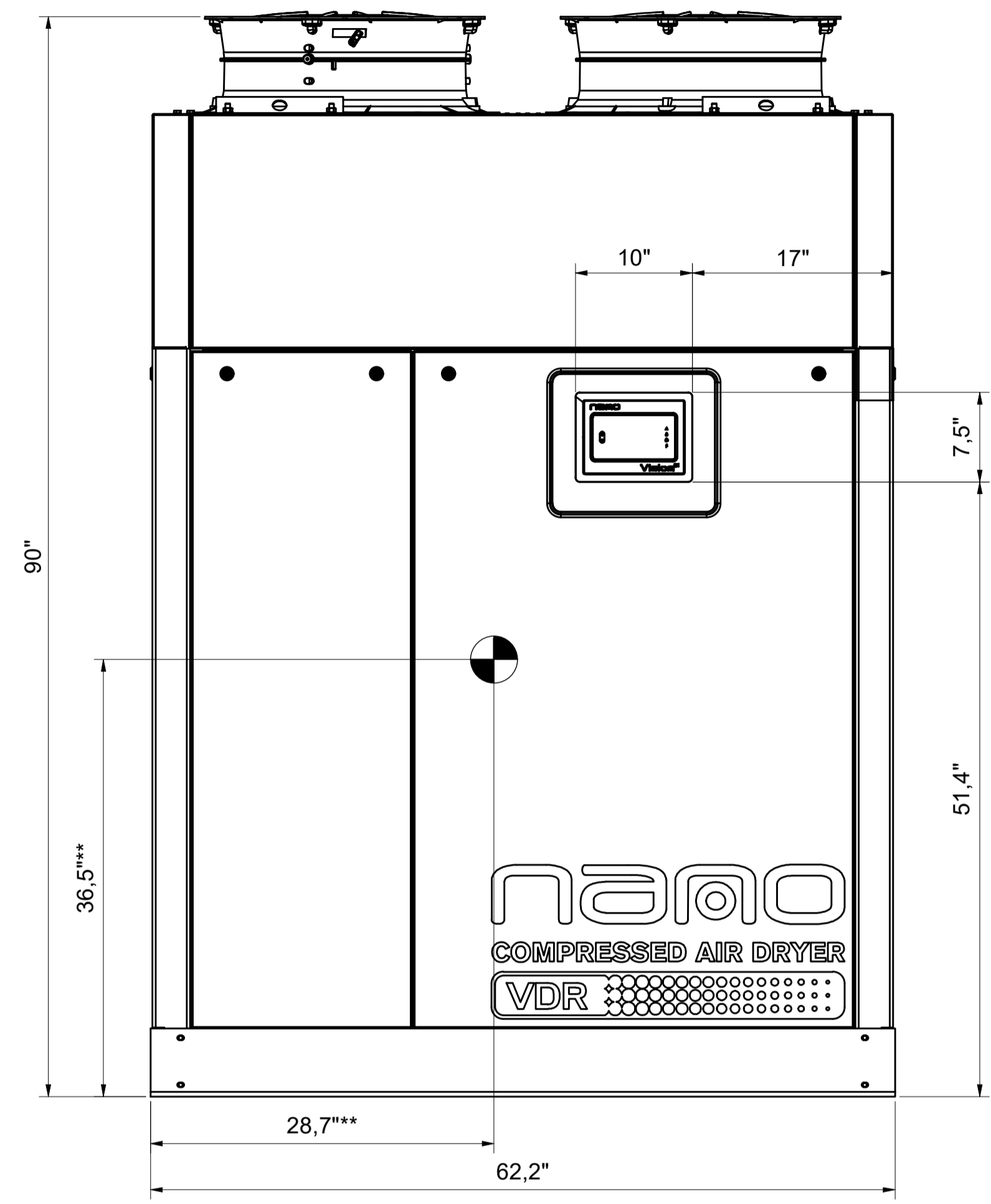


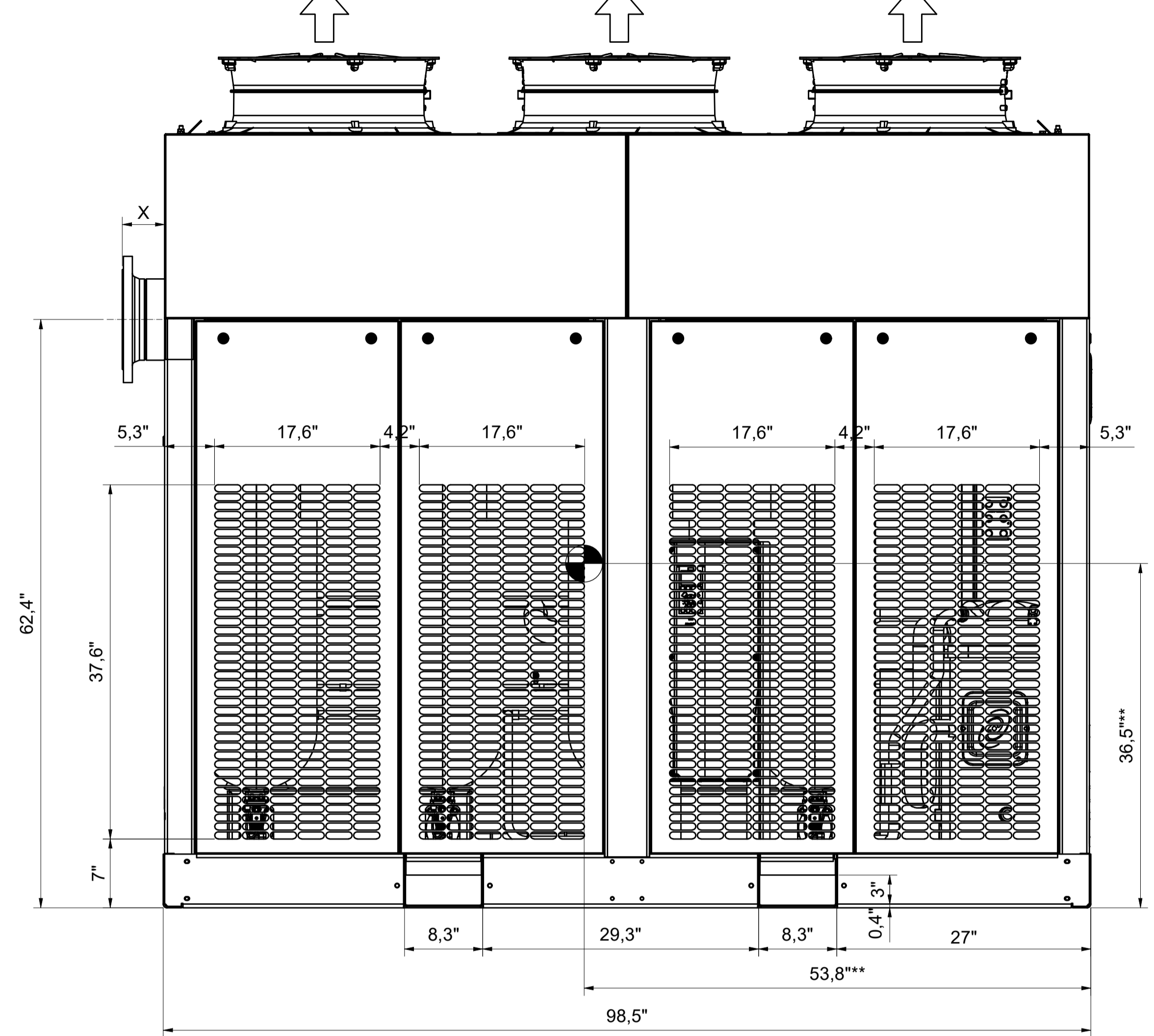
All materials supplied are in compliance with the requirements of the List of Prohibited Substances

VDR6350 / VDR8450
AIRCOOLED
SIDE VIEW

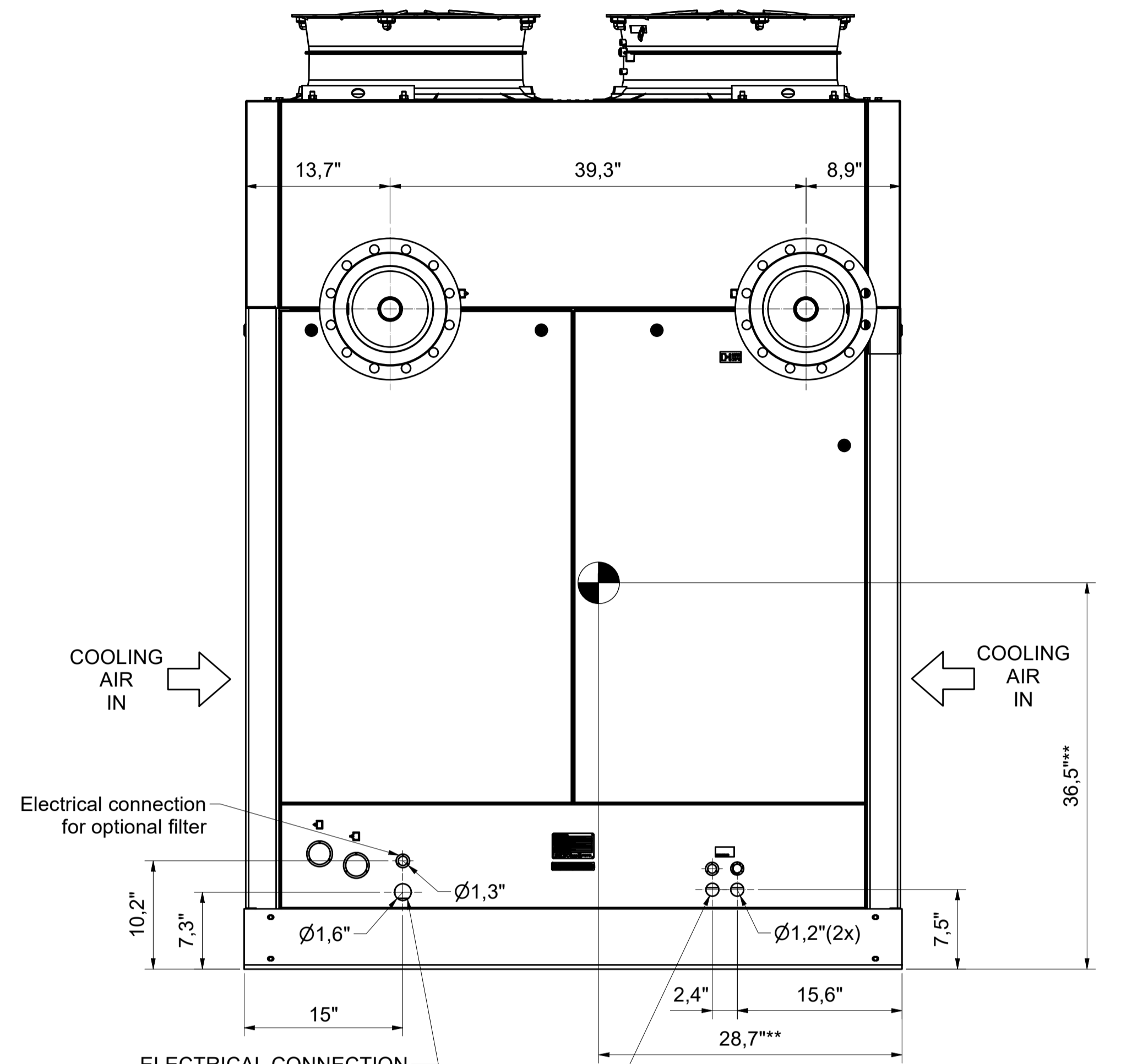
FRONT VIEW



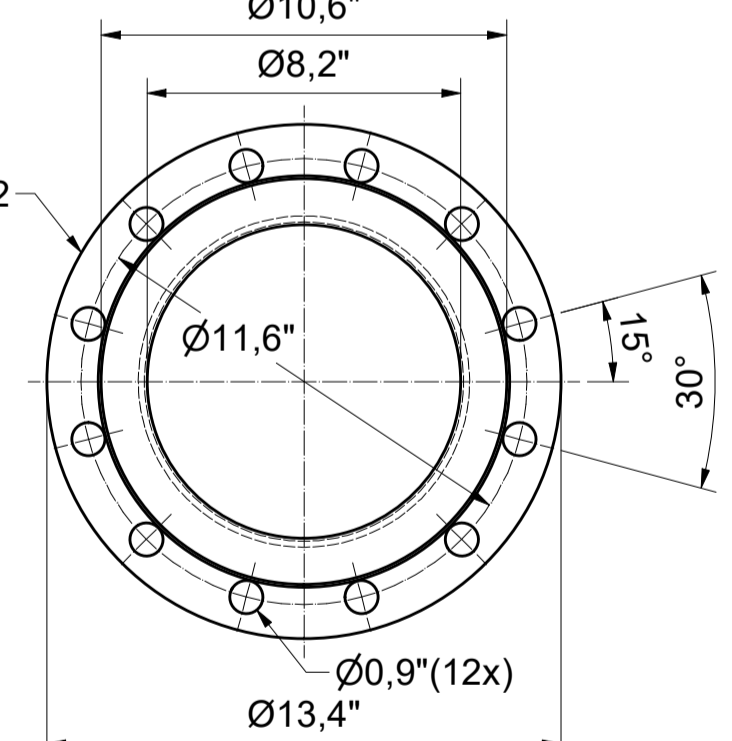
COOLING AIR OUT COOLING AIR OUT COOLING AIR OUT



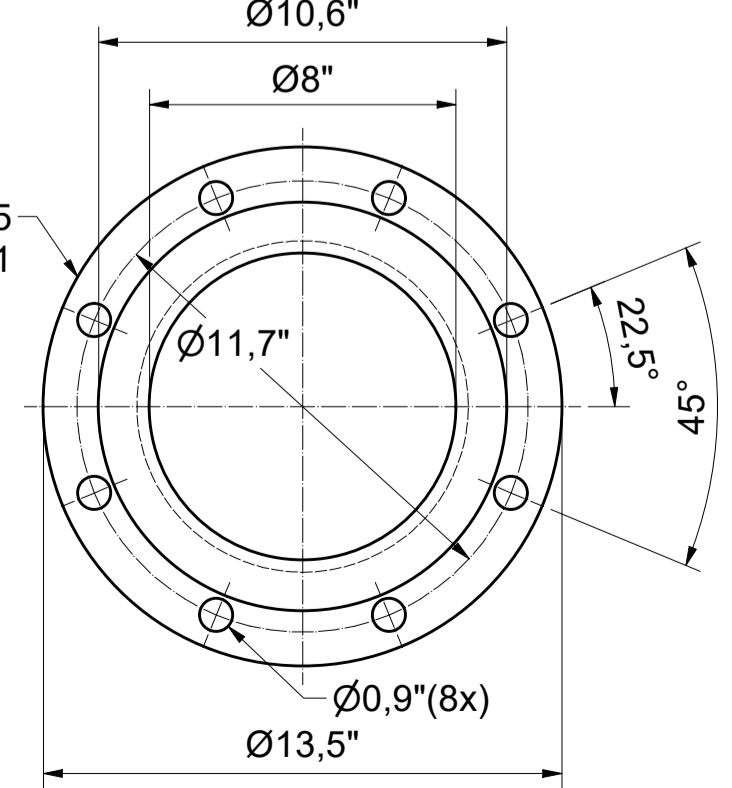
REAR VIEW



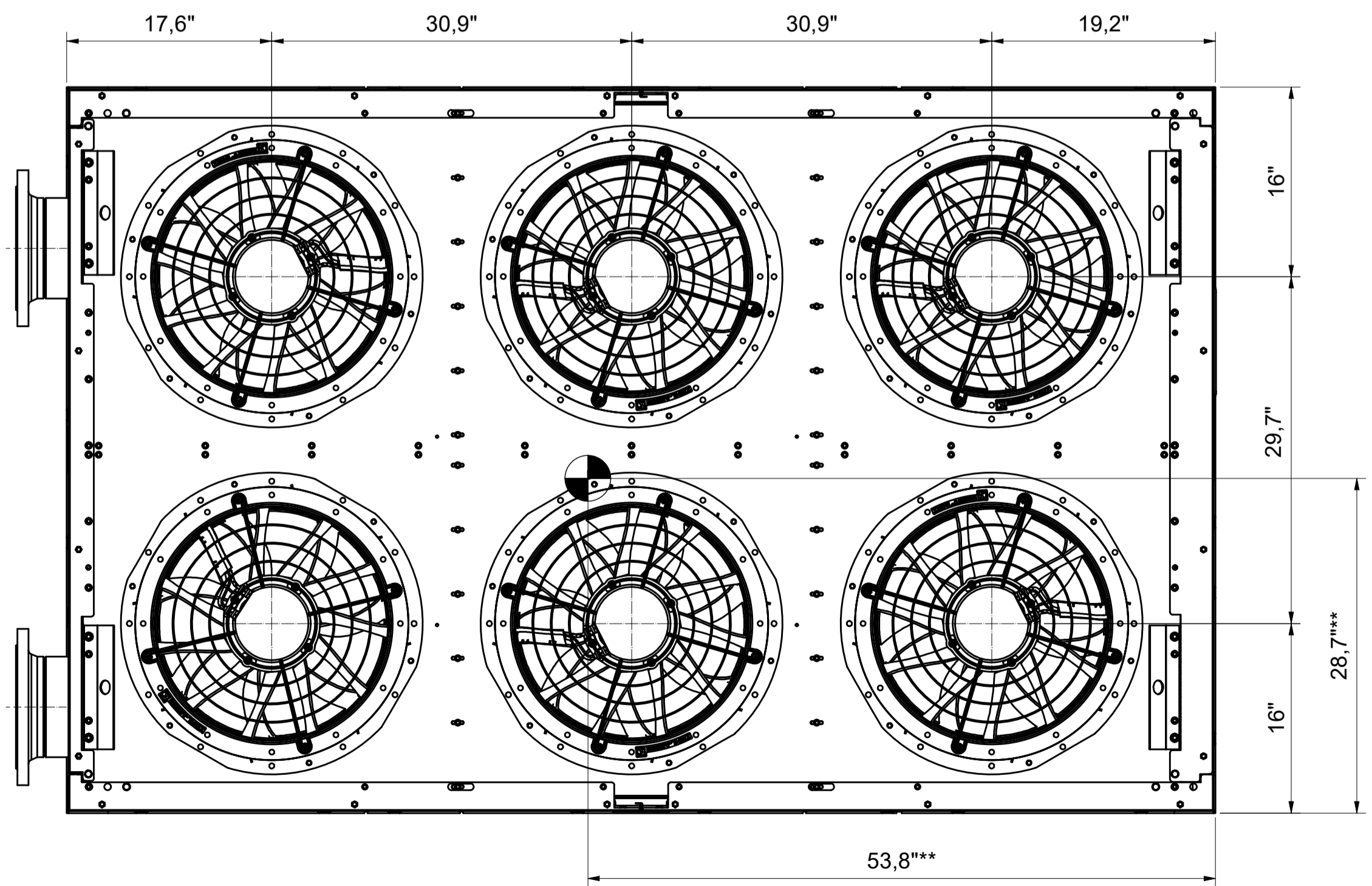
DIN FLANGE (zinc plated)
(1 : 5)



ANSI FLANGE (zinc plated)
(1 : 5)



TOP VIEW



COMPRESSED AIR OUTLET

COMPRESSED AIR INLET

COOLING AIR IN

COOLING AIR IN

Electrical connection for optional filter

Ø1.6"

Ø1.3"

Ø1.2"(2x)

ELECTRICAL CONNECTION
Cable gland size depending on supply cable : M32 or M40

AUTOMATIC DRAIN
male connection: M30x1.5
female connection: G1/2"
Connect each drain individual to the waste pipe

**CENTER OF GRAVITY (APPROXIMATELY)

Dryer Type / Ambient Version	Weight	X DIN FLANGE	X ANSI FLANGE
VDR6350 / 104°F	3726 lbs	4,5"	6"
VDR8450 / 104°F	4012 lbs	4,5"	6"

Tolerances, if not indicated, according to:			
STANDARD CLASS			
Name	DIMENS. DRWG		VDR6350 / VDR8450
Material	Not Applicable		Confidentiality Class acc. to 1102 K
Treatment	Not Applicable		Internal
Scale	1 : 10	Family	A1 Compare
Drawn by	INEMSI	Blank nr.	Replaces
Version Drwg		Kg/Fini wt.	7451 lbs
STATUS	Des checked.	Prod checked.	Approved.
Parent 3D model	1839007671-M1	Ed - Version 3D	1
Released		Date	12/11/2021
			Sheet 1 / 3
			Designation 1839007671-02

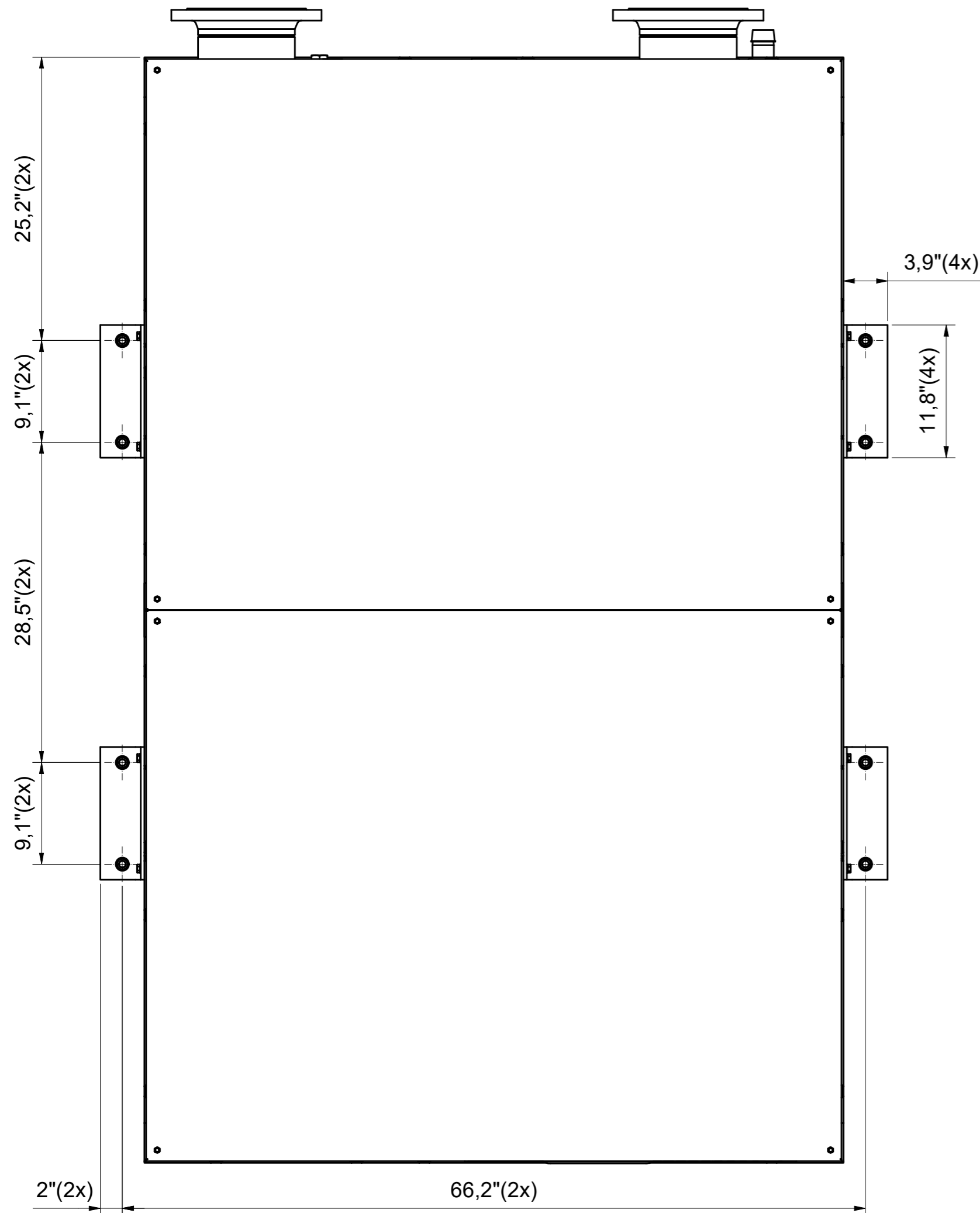
CONFIDENTIAL: This document is our property and shall not be used without our prior permission. Its use is limited to manufacturing or commercialization by our client or partner or company.

1	Ed	Position	Modified from	25/02/2022	User Agent
				Date	Intr./Appd.

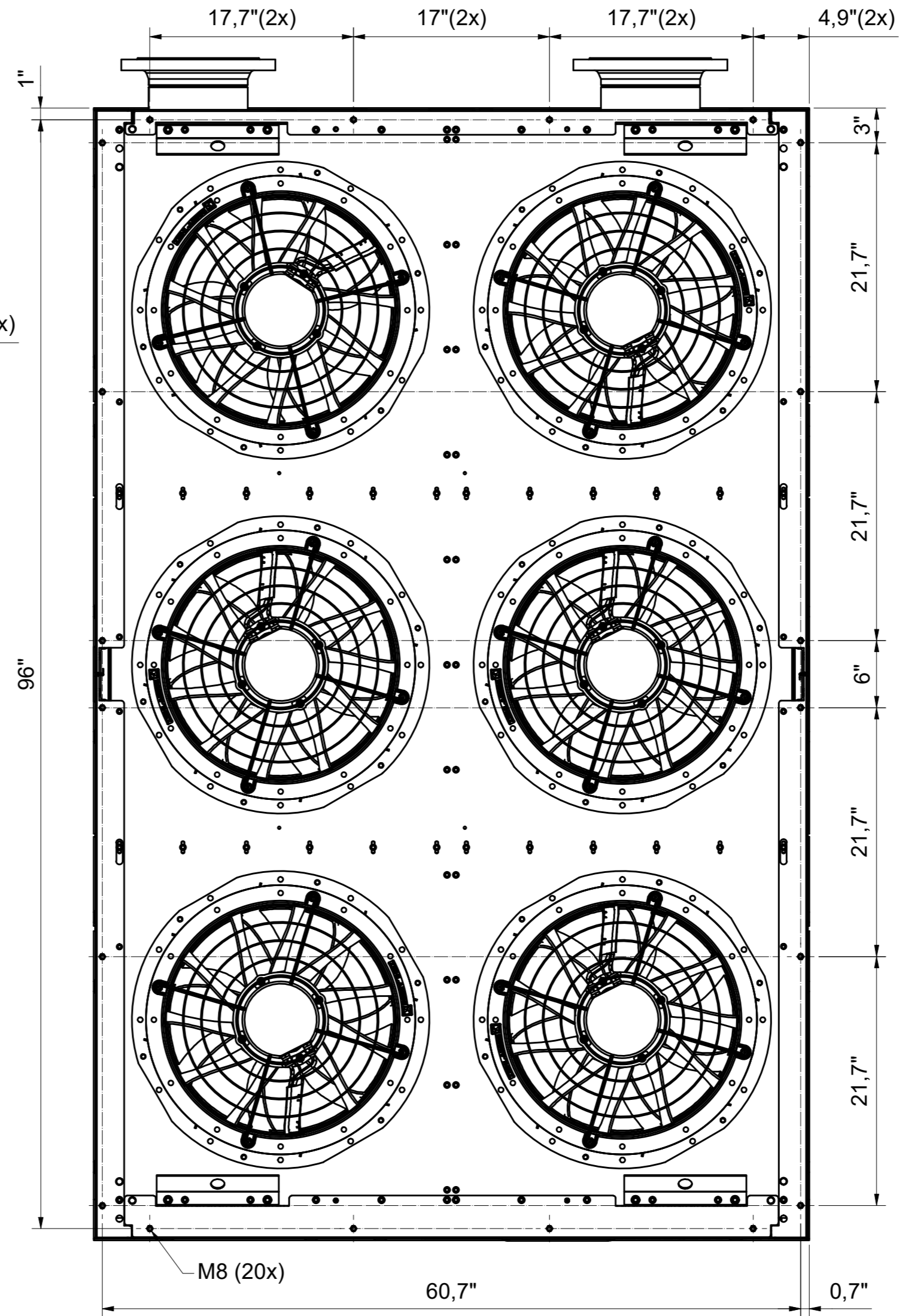
All materials supplied are in compliance with the requirements of the List of Prohibited Substances

CONFIDENTIAL: This document is our property and shall not without our permission be altered, copied, used for manufacturing or communicated to any other person or company.

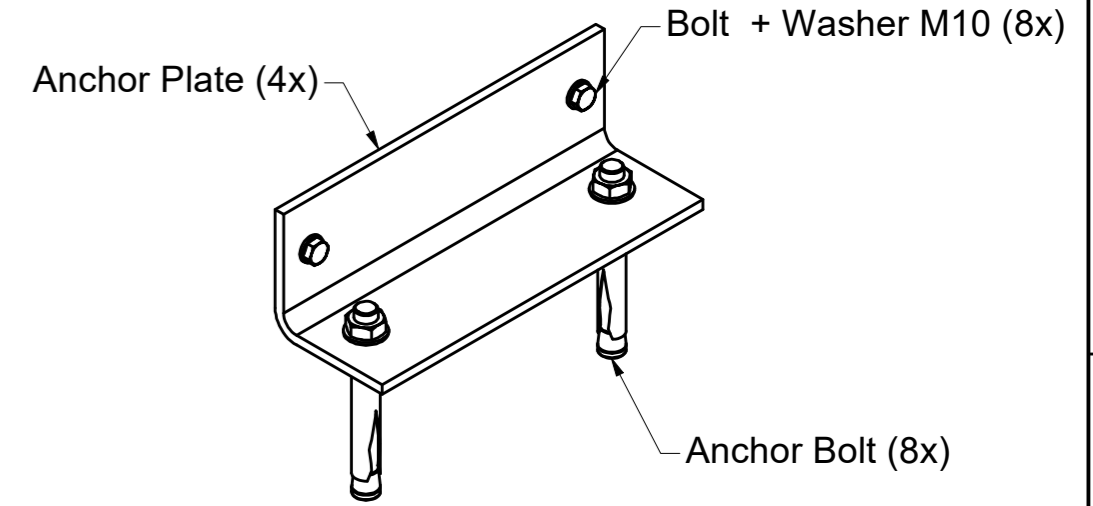
ANCHOR PADS



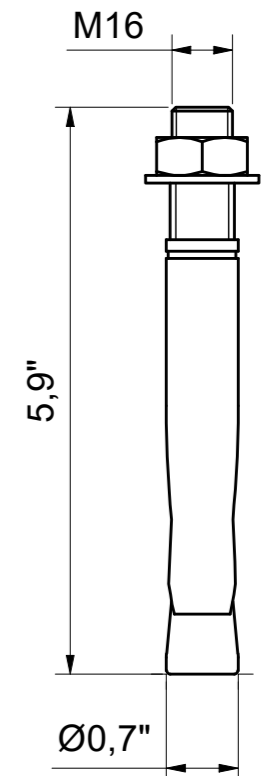
DUCTING CONNECTIONS



ANCHOR KIT (1:5)



ANCHOR BOLT (1:2)



Tolerances, if not indicated, according to:									
STANDARD CLASS									
Name DIMENS. DRWG					VDR6350 / VDR8450				
Material Not Applicable					Confidentiality Class acc. to 1102 K Internal				
Treatment Not Applicable					INV				
Scale 1:10			Family			A2 Compare			Drawing owner
Drawn by INEMSI			Blank nr.			Replaces			APF
Version Drwg		Blank wt		Kg		Fini wt.		Designation	
1839007671-M1		1				7451 lbs		Sheet 3 / 3	
Parent 3D model		Ed. Version 3D		STATUS		Released		1839007671-02	
Ed		Position		Modified from		Date		Intr./Appd.	
						25/02/2022		User Agent	