

installation manual

SEP 3500 ST & 7000 ST



1

Before starting assembly, please check contents are as follows:

- 1 unit/filter
- 1 diffuser
- 1 outlet pipe
- 1 white sealing ring
- 1 test kit/bottle
- 1 grab tap

service interval kit containing:

- molded plastic mount + screw
- printed card
- self-adhesive timestrip

See below left for instructions.

service indicator - assembly and attachment



- i** Insert the boss on the reverse of the mount (c) into the pre-drilled hole in the separator lid.
- ii** Peel backing from timestrip (a) and attach to the plastic card (b) within the dotted lines.
- iii** Flex the card, passing the ends through the slots on the top surface of the mount.

To activate, press firmly on the timestrip label at the point indicated.

After a few minutes, a red line will appear, to indicate 'time in service' up to 12 months.

A replacement card and timestrip will be supplied with each service kit.

general installation notes

- Please ensure a steady fall in the pipe run from the outlet point to the sanitary drain.
- Never discharge condensate to a storm drain or to surface water; always connect to a sanitary drain or sewer.
- Remember that it's the user's responsibility to check with the local authority as to the permissible discharges in their area.

testing quality

Replace filters before outlet cloudiness exceeds the ppm limit for your region.

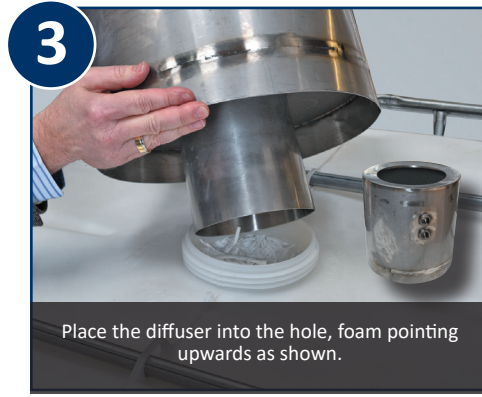
Test outlet quality weekly using kit provided.



Further information is available at www.n-psi.com



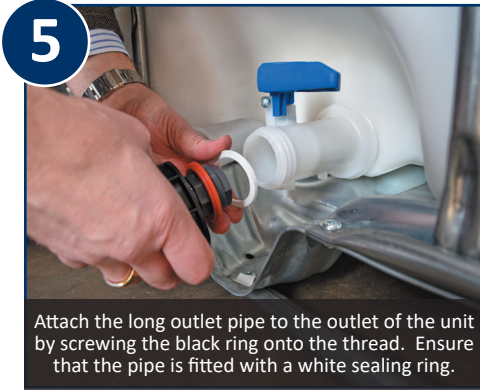
Remove red cap from the top of the unit. (Retain this cap for use during collection.)



Place the diffuser into the hole, foam pointing upwards as shown.



Remove outlet pipe transit cap.



Attach the long outlet pipe to the outlet of the unit by screwing the black ring onto the thread. Ensure that the pipe is fitted with a white sealing ring.



Click the top of the outlet pipe into the two holders to secure the pipe in the upright position on the front panel.

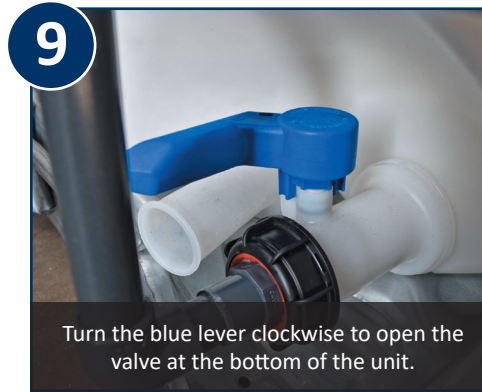


Unlock the valve lever by loosening the screw below the blue lever arm.



Place your condensate inflow hose onto the diffuser unit...

...and your waste water outflow hose onto the outlet pipe.



Turn the blue lever clockwise to open the valve at the bottom of the unit.



Fit grab tap to test outlet on main pipe. Take a sample of condensate once a week and test. (see over for details)



Assemble and attach the service life indicator.