

NSS 200/600/1500

Installation Manual



1

Before starting assembly, please check contents are as follows:

- 1 white felt bag filter with black tube
- 1 filter
- 1 test bottle
- 1 cleaner tower (200, 600 or 1500)
- 1 drilled lid
- - metal retaining springs
 - NSS 200 = 1 x 170 mm
 - NSS 600 = 1 x 250 mm
 - NSS 1500 = 2 x 400 mm

Service interval kit containing:

- molded plastic mount + screw
- printed card
- self-adhesive time strip

Fitting kit containing:

- 1 straight adaptor 15 mm x 1/2" BSP
- 1 blanking plug - large
- 1 elbow 15 mm
- 1 assembled porting block
- 3 porting block small blanking plugs
- 4 screw 4.8 x 45 mm and washers
- 2 grab taps
- 1 blue nylon adaptor
- 1 black tube
 - NSS 200= 73 mm
 - NSS 600 = 100 mm
 - NSS 1500 = 180 mm

Service indicator - assembly and attachment



i Insert the boss on the reverse of the mount (c) into the pre-drilled hole in the separator lid.

ii Peel backing from time strip (a) and attach to the plastic card (b) within the dotted lines.

iii Flex the card, passing the ends through the slots on the top surface of the mount.

To activate, press firmly on the time strip label at the point indicated.

After a few minutes, a red line will appear, to indicate 'time in service' up to 12 months.

A replacement card and time strip will be supplied with each service kit.

General installation notes

• Please ensure a steady fall in the pipe run from the outlet point to the sanitary drain.

• When used in conjunction with timed solenoid drain, set drain "open" duration to minimum setting (1-2 seconds).

• When used in conjunction with motorized ball valve or high capacity drain (ie Drain-all®) a de-pressurisation chamber must be installed between drain and NSS unit.

• Never discharge condensate to a storm drain or to surface water; always connect to a sanitary drain or sewer.

• Remember that it's the user's responsibility to check with the local authority as to the permissible discharges in their area.

Testing quality

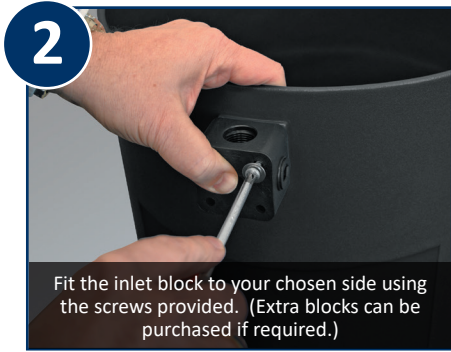
Replace filters before outlet cloudiness exceeds the ppm limit for your region.

Test outlet quality weekly using kit provided.

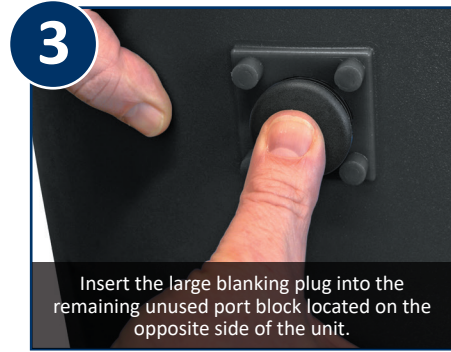


NSS 200/600/1500

Installation guide



2 Fit the inlet block to your chosen side using the screws provided. (Extra blocks can be purchased if required.)



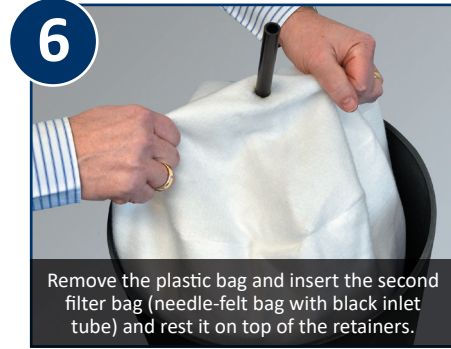
3 Insert the large blanking plug into the remaining unused port block located on the opposite side of the unit.



4 Remove plastic bag and insert the filter bag (white netting with tied top) pushing it gently but firmly down to the base of the unit.



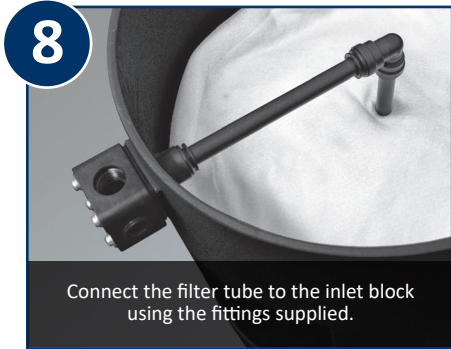
5 Insert the metal retainer(s) with bent ends facing towards. Slide down until it touches the top of the filter bag. **DO NOT** compress the filter bag.



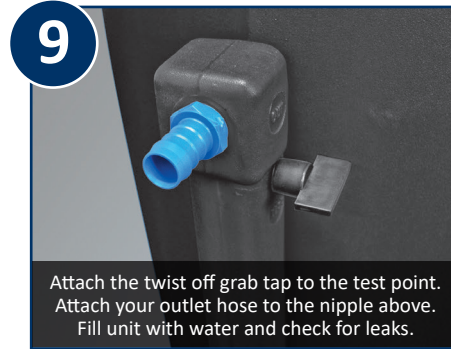
6 Remove the plastic bag and insert the second filter bag (needle-felt bag with black inlet tube) and rest it on top of the retainers.



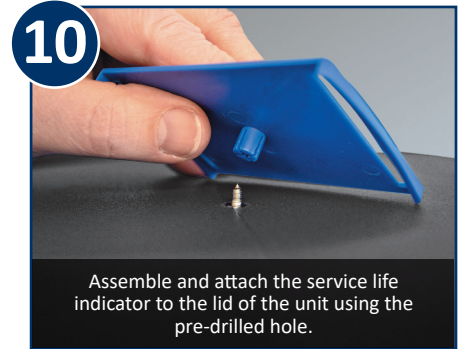
7 Screw the inlet connector (reducing bushing) into place tightly.



8 Connect the filter tube to the inlet block using the fittings supplied.



9 Attach the twist off grab tap to the test point. Attach your outlet hose to the nipple above. Fill unit with water and check for leaks.



10 Assemble and attach the service life indicator to the lid of the unit using the pre-drilled hole.



NSS 200, 600 & 1500



Address: 5509 David Cox Road
Charlotte NC 28269, USA
Tel: 704.897.2182
Fax: 704.897.2183
Internet: www.nano-purification.com
E-mail: support@nano-purification.com

Address: Dukeway
Team Valley Trading Estate, Gateshead
NE11 0PZ, United Kingdom
+44 (0) 191 497 7700
Tel: www.nano-purification.com
Internet: www.nano-purification.com
E-mail: sales_uk@nano-purification.com