

# NSS 2100

## Installation Manual



1

Before starting assembly, please check contents are as follows:

- 1 white felt bag filter with black tube
- 1 filter (bag 1)
- 1 white filter (bag 2)
- 1 test bottle
- 2 metal retaining springs (460 mm)
- 1 cleaner tower
- 1 drilled lid

**Service interval kit containing:**

- molded plastic mount + screw
- printed card
- self-adhesive time strip

**Fitting kit containing:**

- 1 straight adaptor 15 mm x 1/2" BSP
- 1 blanking plug - large
- 1 elbow 15 mm
- 1 assembled porting block
- 3 porting block small blanking plugs
- 4 screw 4.8 x 45 mm and washers
- 2 grab taps
- 1 blue nylon adaptor
- 1 black tube (15 x 200 mm)

### Service indicator - assembly and attachment



**i** Insert the boss on the reverse of the mount (c) into the pre-drilled hole in the separator lid.

**ii** Peel backing from time strip (a) and attach to the plastic card (b) within the dotted lines.

**iii** Flex the card, passing the ends through the slots on the top surface of the mount.

**To activate**, press firmly on the time strip label at the point indicated.

After a few minutes, a red line will appear, to indicate 'time in service' up to 12 months.

A replacement card and time strip will be supplied with each service kit.

### General installation notes

• Please ensure a steady fall in the pipe run from the outlet point to the sanitary drain.

• When used in conjunction with timed solenoid drain, set drain "open" duration to minimum setting (1-2 seconds).

• When used in conjunction with motorized ball valve or high capacity drain (ie Drain-all®) a de-pressurisation chamber must be installed between drain and NSS unit.

• Never discharge condensate to a storm drain or to surface water; always connect to a sanitary drain or sewer.

• Remember that it's the user's responsibility to check with the local authority as to the permissible discharges in their area.

#### Testing quality

Replace filters before outlet cloudiness exceeds the ppm limit for your region.

Test outlet quality weekly using kit provided.

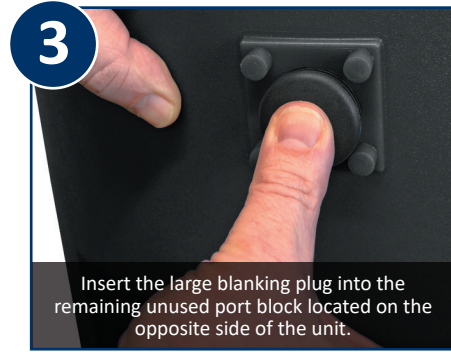


# NSS 2100

# Installation manual



Fit the inlet block to your chosen side using the screws provided. (Extra blocks can be purchased if required.)



Insert the large blanking plug into the remaining unused port block located on the opposite side of the unit.



Lower the filter bag 1 into the separator body, settling it down gently, and ensuring it is in contact with the side wall.



Lower the filter bag 2 into the separator body, settling it down gently on top of filter bag 1.



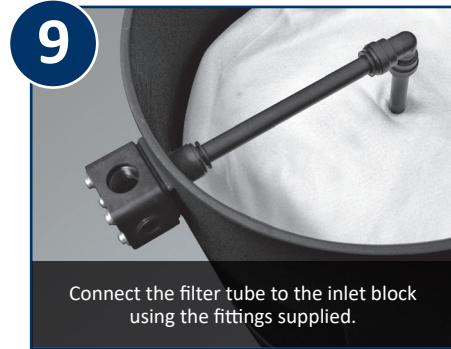
Install the securing spring clips at 90 degrees directly in contact with the filter bags to prevent flotation.



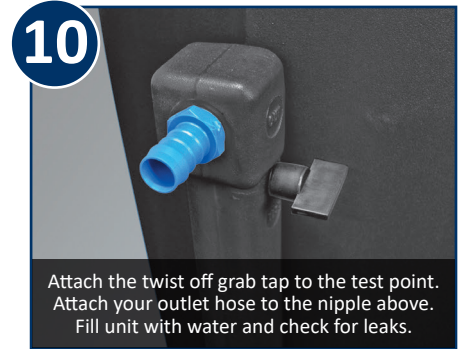
Insert the third filter bag (needle-felt bag with black inlet tube) and rest it on top of the retainers.



Screw the inlet connector (reducing bushing) into place tightly.



Connect the filter tube to the inlet block using the fittings supplied.



Attach the twist off grab tap to the test point. Attach your outlet hose to the nipple above. Fill unit with water and check for leaks.



Assemble and attach the service life indicator to the lid of the unit using the pre-drilled hole.



## NSS 2100

**nano**

**Address:** 5509 David Cox Road  
Charlotte NC 28269, USA  
**Tel:** 704.897.2182  
**Fax:** 704.897.2183  
**Internet:** www.nano-purification.com  
**E-mail:** support@nano-purification.com

**Address:** Dukeway  
Team Valley Trading Estate, Gateshead  
NE11 0PZ, United Kingdom  
**Tel:** +44 (0) 191 497 7700  
**Internet:** www.nano-purification.com  
**E-mail:** sales\_uk@nano-purification.com